

THE FEDERAL DEMOCRATIC REPUBLIC OF  
ETHIOPIA  
CENTRAL STATISTICAL AUTHORITY



INDICES OF LARGE AND MEDIUM SCALE  
MANUFACTURING INDUSTRIES PRODUCTION  
BROCHURE

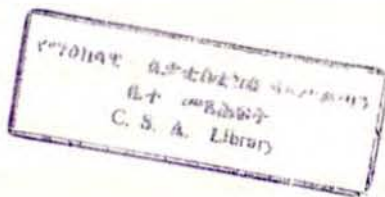
ADDIS ABABA  
FEBRUARY 2001

000046

1/5 ACC0001239

03/08/93 C-~~1~~ 1-5

**THE FEDERAL DEMOCRATIC REPUBLIC OF  
ETHIOPIA  
CENTRAL STATISTICAL AUTHORITY**

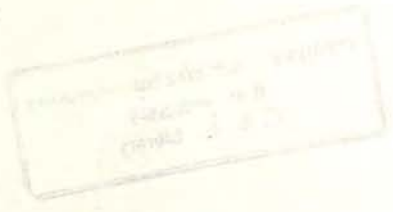


**INDICES OF LARGE AND MEDIUM SCALE  
MANUFACTURING INDUSTRIES PRODUCTION  
BROCHURE**

**ADDIS ABABA  
FEBRUARY 2001**

የኢትዮጵያ ፌዴራላዊ ዲሞክራሲያዊ ጠቅላይ ሚኒስቴር  
የብሔራዊ ማኅበራዊ ምርመራ ቤት  
አዲስ አበባ

THE FEDERAL DEMOCRATIC REPUBLIC OF  
ETHIOPIA  
CENTRAL STATISTICAL AUTHORITY



INDICES OF LARGE AND MEDIUM SCALE  
MANUFACTURING INDUSTRIES PRODUCTION  
BROCHURE

ADDIS ABABA  
FEBRUARY 2001

**PREPARED AND PRINTED BY  
CENTRAL STATISTICAL AUTHORITY  
P.O.BOX 1143 ADDIS ABABA  
Tel. 55-30-11**

## CONTENTS

	<u>PAGE NO</u>
<b>PART I INTRODUCTION AND OBJECTIVES</b>	
1. INTRODUCTION .....	1
2. OBJECTIVES .....	4
<b>PART II SCOPE, COVERAGE AND SOURCE</b> .....	7
<b>PART III METHODOLOGY AND COMPUTATIONAL PROCEDURES</b> .....	9
1. CHOICE OF THE BASE YEAR .....	9
2. DETERMINATION OF WEIGHTS .....	10
3. FORMULA AND COMPUTATIONAL PROCEDURES .....	11
<b>PART IV COMMENTARY ON MANUFACTURING PRODUCTION</b>	
INDICES RESULTS .....	15
<b>PART V STATISTICAL TABLES AND GRAPHS ON ANNUAL PRODUCTION</b>	
INDICES RESULTS .....	25

## LIST OF TABLES

<u>TABLE NO</u>	<u>PAGE NO</u>
1. ANNUAL INDICES OF LARGE AND MEDIUM SCALE MANUFACTURING INDUSTRIES PRODUCTION .....	25
2. ANNUAL INDICES OF LARGE AND MEDIUM SCALE MANUFACTURING INDUSTRIES PRODUCTION BY DETAILED INDUSTRIAL GROUPS AND ITEMS .....	26
3. ANNUAL GROWTH RATE OF LARGE AND MEDIUM SCALE MANUFACTURING INDUSTRIES PRODUCTION .....	37

## LIST OF FIGURES

<u>FIGURE NO</u>	<u>PAGE NO</u>
1. ANNUAL INDICES OF LARGE AND MEDIUM SCALE MANUFACTURING INDUSTRIES PRODUCTION BY INDUSTRIAL GROUPS .....	38
2. ANNUAL INDICES OF MANUFACTURING INDUSTRIES PRODUCTION BY INDUSTRIAL GROUP .....	39
3. NUMBER OF ESTABLISHMENTS OF ALL LARGE AND MEDIUM SCALE MANUFACTURING INDUSTRIES .....	40
4. GROSS VALUE OF PRODUCTION OF LARGE AND MEDIUM SCALE MANUFACTURING INDUSTRIES .....	41
5. VALUE ADDED OF LARGE AND MEDIUM SCALE MANUFACTURING INDUSTRIES .....	42

## ABBREVIATIONS

- C.S.A - Central Statistical Authority  
E.F.Y. - Ethiopian Fiscal Year  
G.C - Gregorian Calendar Year  
ISIC - International Standard Industrial Classification  
N.E.C - Not Elsewhere Classified

## PART I

### INTRODUCTION AND OBJECTIVES

#### 1. INTRODUCTION

Central Statistical Authority (CSA) has been conducting annual survey of Large and Medium Scale Manufacturing Industries regularly for many years in order to collect major indicators that could show the performance of the sector. The survey provides users with data on the activities of manufacturing industries that fall under the scope of the survey. The survey covers those establishments which engage 10 persons and above and use power-driven machines. The annual Large and Medium Scale Manufacturing Industries survey results provide a variety of information such as, number of persons engaged, wages and salaries, quantity of production and raw materials used, sales revenue, gross value of production, industrial and non-industrial costs, value added, capacity, investment and fixed assets and problems of establishments ... etc.

The annual survey of Large and Medium Scale Manufacturing Industries, as indicated above, although provides a wide range of data, more information is required for past and current economic analysis. Hence, an attempt has been made to compute and compile an annual index of Large and Medium Scale Manufacturing Industries Production for 1982 - 1991 E.F.Y. with 1988 = 100.

In general, the index number of industrial production is of the utmost importance in indicating the general level of changes overtime in the volume of production of non-agricultural commodities in various sectors of industry. The index number of production not only compress many facts into few simple figures, but it is also useful in conjunction with other data for economic analysis in summarizing past developments, forecasting future trends and for making decisions on policies. As indicated in the United Nations recommendations, in macro-economies as well, the index of industrial production serves to assess the significance for the economy as a whole of changes in the volume of industrial output in relation to corresponding changes in population, national income, foreign trade, prices and other aggregates. For such purposes an index of industrial production is needed for the country particularly for manufacturing industries, where at least the data is readily available annually.

In Ethiopia, manufacturing production index was first published in 1964 G.C. This consisted of two annual series of index numbers, one for the empire covering the period 1958-1963 G.C. with 1955=100 and the second excluding Eriterea for the period 1951-1963 G.C. with 1950=100.

Following 1964 G.C, the calculation of the index was discontinued for about eight years. In March 1973 G.C the then Central Statistics Office (CSO) released a statistical bulletin entitled "Index of Industrial Production 1967-1971 G.C." Following this year, in 1974 G.C, it was attempted to calculate indices for the period 1959-1966 E.F.Y. shifting the base period from 1967 G.C. to 1962 E.F.Y (July 1969/June 1970 G.C.) From 1974 on wards for almost 25 years the construction of indices of manufacturing industries production was discontinued.

Although, in the last six years various improvements were made in the survey of manufacturing industries both on the type, coverage and quality and the time lag of data released for users, still the data gap exists for indices of manufacturing industries production. Now, in line with CSA's plan to improve quality of the data and to fill-in the data gap in this sector, it is decided to carry out at least on annual basis the calculation of industrial index numbers beginning from 1993 E.F.Y on wards.

To start with, an effort has been made to calculate the annual indices of Manufacturing Industries production from the existing data of the Large and Medium Scale Manufacturing Industries survey. The years under study include periods from 1982-1991 E.F.Y. This period could show the trends or movements of production activities in the manufacturing industries from the centrally planned economy to the present market economy. Furthermore, this calculation of indices of manufacturing industries per annum includes production of both private and public establishments.

Many formulae are available for computation of index numbers; some of them are complicated in form and require extensive data in compilation. Here, the simple formula recommended by the United Nations was employed, because it could be easily applied and makes use only data that are likely to be promptly and regularly available. In addition to that, the formula recommended by the United Nations is used in the process of compilation of the indices in order to have an index number of production with internationally comparable basis. As much as possible all major manufactured articles under the scope are included and only some products with insignificant value added share are omitted in the construction of this manufacturing index numbers.

This statistical document has four parts. Part I deals with an introduction and objectives of construction of index of industrial production. Part II discusses the scope, coverage and source of data for the compilation of the indices. Part III gives an overview about the methodology and computational procedures of the construction of index numbers of manufacturing production. Part IV provides commentary on the manufacturing production indices results. Finally, in part V the results of the annual indices of Large and Medium Scale Manufacturing Industries are presented using Tables and Graphs for the period under study.

## **2. OBJECTIVES**

The main objectives of construction of Indices of Large and Medium Scale Manufacturing Industries are to:

- a. obtain reliable information that indicate changes overtime in the volume of production of the sector; which will be useful for the analysis of present and future growth of the industrial sector.
- b. compile an index number of production by industrial groups; so that to compare changes in output between various groups of industries.
- c. obtain index of production which will be used by policy makers, planners and researchers for assessing the significance for the economy as a whole changes in the volume of manufacturing output in relation to corresponding changes in macro economic

elements, such as population, national income, foreign trade, prices and other aggregates.

- d. fill-in the statistical data gap concerning the indices of manufacturing production.

In this respect, it is expected that this index will form the basis upon which similar but more detailed compilations with regular intervals (preferably quarterly) can be designed.

## PART II

### SCOPE, COVERAGE AND SOURCE

The scope of the index of industrial production here is limited to the production of Large and Medium Scale Manufacturing Industries, for which annual census data is readily available. All the other industrial activities: small scale and cottage/handicraft, mining and quarrying, construction, electricity and gas are not included. Furthermore, the grouping of the index of manufacturing industries is based on industrial classification; i.e. a classification of establishments by types of activity. The classification applied is the International Standard Industrial Classification (ISIC) of all Economic Activities recommended by the United Nations. The results of the index under the scope are arranged, so as to correspond to major (2-digit) groups in the Standard Industrial Classification. For detailed reference the construction of the indices are presented at 4 digit ISIC group and by items of production which add up to major groups (2 digit).

It is attempted to cover all publicly and privately owned Large and Medium Scale Manufacturing Industries in all regions of the country in the construction of index number of production; where establishments under the scope are found.

A total of 153 production series have been used in the compilation of the index based on output indicators, except for the series on printing and related services and furniture industries for which an input indicators were applied. The production series were selected according to their share of value added to total manufacturing industries under the scope.



The item was automatically selected when its contribution to the total manufacturing value added at the national account concept at factor cost was greater than or equal to 0.01 percent. Relevancy, consistency and reliability of the data were other factors considered in the selection process.

Some establishments produce more than one major production articles that could be classified in different ISIC groups. In this case as much as possible the products were reclassified to their appropriate 4-digit ISIC group.

## PART III

### METHODOLOGY AND COMPUTATIONAL PROCEDURES OF CONSTRUCTION OF THE INDEX

This part of the report presents the criteria used for choosing the base year, formula applied and computational procedures of volume index manufacturing industries, for the years under study.

#### 1. CHOICE OF THE BASE YEAR

The base year is the comparison period of the index which is the year or period written as 100 in the series of index numbers. The choice of the base period in the construction of index number is important and calls for careful consideration. In this respect, the following conditions were taken into consideration in the selection of the base year for the construction of quantity index numbers for the Large and Medium Scale Manufacturing Industries.

The first criteria used was the normality of the base year. Although, it is not easy to determine a "normal" year that can be used for comparison, an effort has been made to select it using different approaches. In general, the base year should be free from war, drought and economic boom...etc. To get an indication about the normality of the base year three major variables were chosen. These are: number of establishments, gross value of production and value added. The time series data for these variables for ten years were examined (see figures 1-5) to select the normal base year. In addition to the above criteria the nearness of the normal year to the current year has been considered.

Finally, it is important to underline the fact that these indices are expected to be used for the calculation of the overall GDP of the country; therefore it is not advisable to apply a different base year for this sector. Thus, considering all these issues the year 1988 E.F.Y. has been selected.

## 2. DETERMINATION OF WEIGHTS

One of the major tasks in the construction of the index of industrial production is to determine the weight to be attached to the various industrial groups and individual products. All manufactured products do not contribute equally to the total output, for this reason, weights should be attached to each product in accordance with its relative importance. The need to attach weights answers such questions as: what was the direct effect in the over all industrial production index of a particular quantity changes for a particular period? Moreover, the relative importance shows the share of each manufactured product to the respective major industrial groups.

For compiling industrial production index, it is convenient, in practice, to proceed in two steps.

- a. First, weights to the detailed industrial groups (4-digit branch) should be attached in proportion to their contribution to **value added** of the total Large and Medium Scale Manufacturing Industries in the base year. The reason why value added is suggested for weight is due to its better capacity to measure the price structure of production and productivity.

- b. The second stage is to assign weights to individual product series within a 4- digit branch. This has been done according to their contribution to the branch's **value of gross output** in the base year.

For some manufacturing industrial groups, due to difficulties encountered in quantifying their volume of production, the weights have been fixed according to the share of costs of raw materials used in the base year to the total raw materials cost of the 4- digit branch. These are:- printing and related services and furniture industries.

### **3 FORMULA AND COMPUTATIONAL PROCEDURES**

#### **3.1 Choice of Appropriate Index Formula**

As mentioned earlier, many formulae are available for the compilation of index numbers. Some of them needs extensive data in compilation and are complicated in form to apply. Therefore in this brochure, it is tried to choose the appropriate formula to the construction of the index of Large and Medium Scale Manufacturing Industries production.

A base weighted Laspeyres formula have been chosen and used in the compilation of the index numbers due to the following reasons:

- a. It is a simple formula with a clear interpretation, which could easily be applied and makes use only of data likely to be available promptly and regularly.

b. This formula is recommended by the United Nations for the purpose of international comparisons and aggregation.

The formula is described below as:

$$I_k = \frac{\sum_{j=1}^n v_{0j} \frac{q_{1j}}{q_{0j}}}{\sum_{j=1}^n v_{0j}} \times 100$$

where

$I_k$  = Industrial production index for the K<sup>th</sup> 4-digit branch

$V_{0j}$  = Value added weights for the j<sup>th</sup> item within the 4-digit branch of the base year

$q_{1j}$  = Quantity of production of the j<sup>th</sup> item in the current year

$q_{0j}$  = Quantity of production of the j<sup>th</sup> item in the base year

$n$  = Number of items in the 4-digit branch

### 3.2 Data for Computation of the Index

In the calculation of the indices of Large and Medium Scale Manufacturing Industries production, the following data have been compiled.

- a. Quantity of production for each product series under consideration for the base and the current periods.

- b. Value of gross output for each item in each branch and for the branch as a whole for the base period.
- c. Value added at factor cost in the base period.

### 3.3. Computational Procedures

- a. Assignment of weights to  $i^{\text{th}}$  4-digit branches ( $W_{oi}$ ). For each 4-digit branch, obtain a particular weight by taking the share of its value added from the total value added in the base year,  $\left(\frac{v_{oi}}{v_{oT}}\right)$ .
- b. Obtain the share of individual products series within each 4-digit branch according to their contribution to the value of gross output in the base year.
- c. Multiply the results obtained in step "b" by the weight of the 4-digit branch in step "a".

This gives the weight to individual products within the  $i^{\text{th}}$  4-digit branch ( $w_{ij}$ ) (see table 2).

- d. Compute the quantity relatives for each individual product within the  $i^{\text{th}}$  4-digit branch,  $\left(\frac{q_{cij}}{q_{oij}}\right)$ .

This is defined as the ratio of quantity produced in the current year and in the base year.

- Compute the index for the  $i^{\text{th}}$  4 - digit branch ( $I_p^i$ )

$$I_p^i = \frac{\sum_{j=1} \left( w_{ij} \times \frac{q_{cij}}{q_{ojj}} \right)}{\sum_{j=1} w_{ij}} \times 100$$

where

$I_p^i$  = Industrial production Index for the  $i^{\text{th}}$  4- digit branch

$w_{ij}$  = Weight for the  $j^{\text{th}}$  individual product within the  $i^{\text{th}}$  4- digit branch

$\frac{q_{cij}}{q_{ojj}}$  = Quantity relative for the  $j^{\text{th}}$  individual product within the  $i^{\text{th}}$  4- digit branch

Finally, compute the overall industrial production index as:

$$I_p = \frac{\sum (W_{0i} \times I_p^i)}{\sum W_{0i}} \times 100$$

where

$I_p$  = Industrial production index for the sector

$W_{0i}$  = Weight for the  $i^{\text{th}}$  4- digit branch

$I_p^i$  = Industrial production index for the  $i^{\text{th}}$  4- digit branch

## **PART IV**

### **COMMENTARY ON MANUFACTURING INDICES**

#### **RESULTS**

The indices of Large and Medium Scale Manufacturing Industries production have been computed and compiled for the period of 1982 - 1991 E.F.Y. (1989/90 - 1998/99) and the results are presented in three tables. Tables 1 and 2 provide annual indices of Large and Medium Scale Manufacturing Industries Production by major and detailed industrial groups and items. Table 3 sets out annual growth rate of the sector by major industrial groups.

#### **OVERALL PERFORMANCE OF THE SECTOR**

The index of Large and Medium Scale Manufacturing industries Production /all items/ had a marked performance in 1991 E.F.Y. compared to that of all other years under review; recording an index level of 122.98 percent. The notable increase mainly in the indices level of tanning, leather and footwear, rubber and plastic products, chemicals, food, paper and printing and furniture industries had a significant influence on the trend. The overall indices of this sector had been at its lowest level from 1983 to 1985 E.F.Y. ranging from 74 to 84 percent (see Table - 1).

## PERFORMANCE BY INDUSTRIAL GROUPS

### Manufacture of Food Products:

The food industrial group was the major industrial group which influenced the pattern of all manufacturing industrial groups combined. This industrial group alone contributes almost 30 percent of the weight of Large and Medium Scale Manufacturing Industries Production (see Table -2).

The results in Table 2 shows that the indices of production of manufacture of food products industrial group registered an impressive increase to a level of 138.59 percent as compared to that of the previous years under discussion. This significant lift up in annual indices of food products was mainly attributed to the increase in the indices of most of its components to a level given in brackets for each industrial groups; namely, production, processing and preserving of meat, fruit and vegetables (318.95 percent), manufacture of vegetables and animal oils and fats (139.14 percent), manufacture of grain mill products (130.97 percent), manufacture of bakery products (140.56 percent), manufacture of sugar and sugar confectionery (134.16 percent) and manufacture of macaroni and spaghetti (164.76 percent).

### Manufacture of Beverages:

Apart from 1991 E.F.Y., production indices of beverages industrial group remained below the base year level in the whole period under review. The 1991 E.F.Y. production indices level of beverage industries rose slightly by about 0.33 percent compared to its level in 1990 E.F.Y.

The moderate increase in the production of beer, liquor and alcohol accounted for this performance improvement. However, production of malt and wine industries registered a decline.

#### **Manufacture of Tobacco Products:**

The industrial production indices of tobacco industrial group showed a somewhat erratic trend over the periods under review. The annual production indices was at its peak in 1983 E.F.Y. recording an index level of 129.75 and in 1986 E.F.Y. reached at the lowest level of 78.87 percent. The 1991 E.F.Y. index level was 98.24 percent which showed a decline in production index by about 9.85 percent compared to its level in 1990 E.F.Y.

#### **Manufacture of Textiles:**

The production index level of this group has been less than its level of 112.86 percent in 1982 E.F.Y. throughout the rest of the period under review. Moreover, except that of 1982 and 1987 E.F.Y. the production index level of textile industries failed to cross the base year production level. However, the annual production index level in 1991 E.F.Y. has increased by 12.92 percent as compared to that of 1990 E.F.Y. This was mainly caused by the increase in the production indices of spinning, weaving and finishing of textiles industrial group, particularly, cotton seed, cotton yarn and cotton fabrics which are relatively with highest weights in this detailed industrial group.

### **Manufacture of Tanning, Dressing, Luggage and Footwear:**

The production index level of this group has decreased in 1983 and 1984 E.F.Y. and then steadily increased from 1985 E.F.Y. to 1991 E.F.Y. The index level of 1991 E.F.Y. was more than double /206.98 percent/ as compared to that of the base year. Moreover, this industrial group recorded an appreciable level of 89.12 percent increase as compared to that of 1990 E.F.Y. The substantial production index level of lining sheep, crust sheep, and leather footwear which have a highest weight in the group, provided the major push to the observed high level of performance.

### **Manufacture of Wood and of Products of Wood and Cork:**

This industrial group showed a fluctuating trend throughout the period under review. A highest and lowest level of production index were seen in 1989 and 1990 E.F.Y., respectively.

### **Manufacture of Paper and Paper Products and Printing:**

The production index level of this industrial group was below the base year period in most of the years under discussion. However, its level of performance increased to a production index level of 111.64 and 135.00 percent in 1990 and 1991 E.F.Y., respectively.

### **Manufacture of Chemicals and Chemical Products:**

The production index level of this industrial group was extremely at a lower level in the years before the base year 1988 E.F.Y. and there

after showed a significant improvement. The substantial improvement in the production index level of this group in the recent years under review was attributed to the rise in the production index levels of manufacture of soap and detergents, cleaning and polishing, perfumes and toilet preparations, particularly, soap which have a highest weight in this industrial group.

### **Rubber and Plastic Products:**

The production Index level of rubber and plastic products industrial group had been significantly lower from 1983 - 1985 E.F.Y. compared to the base year. However the performance level of this group considerably improved in the rest of the years under review. This improvement in the production index level specially from the year 1986 E.F.Y. on wards was largely due to the increased production index level of manufacture of rubber products, which in turn was attributed to its major component tyre production index level. Moreover, to some extent the increased production index level in this group was contributed by manufacture of plastic products particularly, foam, plastic bags and polyethylene products.

### **Manufacture of other Non-Metallic Mineral Products:**

The production index level of this industrial group had been extremely lower than that of the base year from 1982 to 1985 E.F.Y. and showed relatively an increasing trend till 1989 E.F.Y. The group's index level was again significantly decreased particularly in 1991 E.F.Y. The poor performance level in 1991 E.F.Y. was largely attributed to the lower production index level of manufacture of cement, lime and plaster,

particularly cement production and manufacture of glass and glass products, more specifically, there was no glass production in that year.

#### **Manufacture of Basic Iron and Steel:**

The production index level of this group was very low from 1983 to 1985 E.F.Y. and then impressively lifted up from 1986 E.F.Y. onwards, though a decreasing tendency was observed in 1990 and 1991 E.F.Y.

#### **Manufacture of Fabricated Metal Products:**

The production index of this industrial group recorded a level below that of the base year throughout the period under review, except that of 1987 E.F.Y. Moreover, a declining trend was observed through the years 1989 to 1991 E.F.Y.

#### **Assembly of Motor Vehicles:**

The production indices of this industrial group was extremely higher and lower in the years 1982 to 1987 and 1989 to 1991 E.F.Y, respectively. The major contributor for the low level of performance in this group in the years 1989 to 1991 E.F.Y. was the significantly lower production of tractor assembly, which have the highest weight in the group.

## **Manufacture of Machinery and Equipment N.E.C.**

The negligible magnitude of the weight assigned to this industrial group indicates the fact that the development stage of this important industrial group is at its infant stage. Moreover, production index levels in this industrial group remained below the base year 1988 E.F.Y. throughout all the period under review. The index level of the group was substantially below the base year except 1986 and 1989 E.F.Y.

## **Manufacture of Furniture:**

As indicated in the methodological part of the brochure due to difficulties encountered to obtain the production quantity indicators of this group, an indirect method i.e. input indicators were used. As can be seen from the index results given in Tables 1 and 2, the input indicators showed that the index level of manufacture of furniture is in an increasing trend throughout the period under review, only with few exceptions. Moreover, almost all the index results are not as such far from the base year index level.

## **Annual Growth Rate:**

As can be seen from Table 3, during the period 1983 - 1991 E.F.Y. Large and Medium Scale Manufacturing industries grew at an average rate per annum of 2.82 percent. It is evident from the growth rates presented in this Table that among the period in question, there were a considerable slackening of production activities in 1983 and 1984 E.F.Y. This was due to the lowest and negative growth rate of most of the

industrial groups, especially major industrial groups like that of food and beverage manufacturing.

For all manufacturing industrial groups combined, the highest growth rate recorded was in 1991 E.F.Y. , which was an increase of 19.8 percent over that of 1990 E.F.Y. The rise in the average growth rate of production in this year is to be attributed mainly to the unprecedented performance in food, tanning, leather and footwear and chemicals manufacturing major industrial groups i.e. a growth rates of 32.33, 89.12 and 53.16 percent, respectively, over that of the preceding year. Moreover, for the total manufacturing, rates of growth higher than the average growth rate per annum of 2.82 percent was recorded throughout the period 1985 - 1987 and 1989 E.F.Y.

A detailed review of the growth rate of the component industrial groups reveals that the average growth rate per annum (from 1983 to 1991 E.F.Y.) for all industrial groups except food, tobacco and wood was above the overall average growth rate (2.82 percent) of the sector. That, in other words, means the annual overall growth rate of 2.82 percent is attributed to the very low growth rates recorded in food, tobacco and wood industrial groups.

# PART V

## STATISTICAL TABLES AND GRAPHS



**ANNUAL INDICES OF LARGE AND MEDIUM SCALE MANUFACTURING INDUSTRIES PRODUCTION  
BY MAJOR INDUSTRIAL GROUPS 1989/90 - 1998/99 G.C (1982-1991 E.F.Y.)**

**Table 1**

INDUSTRIAL GROUP	1982	1983	1984	1985	1986	1987	1988	1989	1990	1991
FOOD	122.24	106.70	84.69	74.46	71.89	83.89	100.00	101.75	104.73	138.59
BEVERAGE	81.49	73.07	66.41	74.04	62.74	95.06	100.00	99.30	96.75	100.33
TOBACCO	121.25	129.75	100.91	103.77	78.87	85.01	100.00	108.72	108.97	98.24
TEXTILES	112.86	45.72	69.71	71.73	89.16	106.64	100.00	92.05	84.30	95.20
WEARING APPAREL	261.68	193.40	27.99	104.96	212.68	114.21	100.00	118.67	128.38	71.26
TANNING, LEATHER AND FOOTWEAR	123.07	86.61	75.22	98.34	98.84	99.23	100.00	99.86	109.45	206.98
WOOD	114.92	92.86	109.26	110.72	104.88	116.37	100.00	127.37	73.47	80.05
PAPER & PRINTING	89.44	72.84	84.61	93.10	99.89	86.77	100.00	98.54	111.64	135.00
CHEMICALS	63.67	35.85	58.07	86.02	94.28	86.79	100.00	112.21	93.40	143.04
RUBBER & PLASTIC PRODUCTS	106.50	67.00	67.20	90.65	151.24	143.12	100.00	150.21	161.92	153.39
NON - METAL	42.46	42.97	41.13	49.96	71.87	94.36	100.00	113.75	91.03	78.53
BASIC IRON AND STEEL	99.02	70.73	42.80	73.36	122.99	186.85	100.00	225.88	180.00	135.96
FABRICATED METAL PRODUCTS	56.47	40.06	39.06	59.82	95.56	101.13	100.00	99.86	82.79	72.69
MACHINERY AND EQUIPMENT	30.46	22.33	16.89	33.14	87.55	46.32	100.00	95.05	31.68	36.15
ASSEMBLY OF MOTOR VEHICLES	123.47	123.57	123.35	293.78	369.61	254.16	100.00	28.60	30.26	48.08
FURNITURE	87.86	97.77	98.25	106.96	115.15	101.03	100.00	106.65	109.55	112.18
<b>ALL MANUFACTURING</b>	<b>101.69</b>	<b>81.41</b>	<b>74.08</b>	<b>83.75</b>	<b>91.91</b>	<b>100.81</b>	<b>100.00</b>	<b>106.41</b>	<b>102.65</b>	<b>122.98</b>

**ANNUAL INDICES OF LARGE AND MEDIUM SCALE MANUFACTURING INDUSTRIES PRODUCTION**  
**BY DETAILED INDUSTRIAL GROUPS AND ITEMS 1989/90 - 1998/99 G.C (1982 - 1991 E.F.Y)**

TABLE 2

DESCRIPTION OF ITEMS	Weight(%)	1982	1983	1984	1985	1986	1987	1988	1989	1990	1991
<b>MANUFACTURE OF FOOD PRODUCTS .....</b>	<b>29.00</b>	<b>122.24</b>	<b>106.70</b>	<b>84.69</b>	<b>74.46</b>	<b>71.89</b>	<b>83.89</b>	<b>100.00</b>	<b>101.75</b>	<b>104.73</b>	<b>138.59</b>
<b>Production, processing and preserving of meat,</b>											
<b>fruit and vegetables .....</b>	<b>0.83</b>	<b>279.66</b>	<b>224.75</b>	<b>70.72</b>	<b>99.19</b>	<b>49.18</b>	<b>77.06</b>	<b>100.00</b>	<b>80.45</b>	<b>68.44</b>	<b>318.95</b>
Vegetable Soup .....	0.07	586.98	558.03	0.00	80.97	42.16	49.91	100.00	48.83	43.71	716.17
Beef, Mutton and Goat Meat.....	0.17	54.51	100.11	23.82	45.19	29.48	45.09	100.00	53.88	24.71	90.08
Minchetabish & Zigin Wet.....	0.12	979.44	527.30	66.64	126.35	37.80	73.41	100.00	80.53	67.55	760.36
Tomato Paste.....	0.22	36.74	124.82	90.41	108.81	90.02	146.59	100.00	73.38	85.41	175.10
Marmalade.....	0.16	277.62	187.98	130.47	133.50	2.95	27.97	100.00	126.22	77.72	339.76
Animal Feed.....	0.01	178.66	186.49	89.21	144.81	106.20	92.05	100.00	100.10	156.79	273.11
Tallow.....	0.07	95.36	68.13	62.69	85.32	92.08	84.99	100.00	89.21	109.23	115.99
<b>Manufacture of vegetables and animal oils and fats...</b>	<b>0.93</b>	<b>186.49</b>	<b>142.81</b>	<b>122.70</b>	<b>88.75</b>	<b>90.11</b>	<b>118.96</b>	<b>100.00</b>	<b>104.08</b>	<b>161.47</b>	<b>139.14</b>
Edible Oil.....	0.81	185.02	137.73	117.37	90.72	94.78	123.24	100.00	107.75	167.04	141.49
Oil Cake.....	0.12	196.22	176.56	158.04	75.69	59.19	90.60	100.00	79.69	124.55	123.56
<b>Manufacture of dairy products .....</b>	<b>0.02</b>	<b>250.86</b>	<b>165.48</b>	<b>76.30</b>	<b>53.46</b>	<b>68.63</b>	<b>94.57</b>	<b>100.00</b>	<b>93.00</b>	<b>93.85</b>	<b>83.21</b>
Pasteurized Milk.....	0.02	250.86	165.48	76.30	53.46	68.63	94.57	100.00	93.00	93.85	83.21
<b>Manufacture of Grain mill products.....</b>	<b>3.83</b>	<b>160.18</b>	<b>159.14</b>	<b>79.54</b>	<b>49.90</b>	<b>64.33</b>	<b>95.13</b>	<b>100.00</b>	<b>113.14</b>	<b>82.35</b>	<b>130.97</b>
Wheat Flour.....	3.61	148.88	145.20	71.06	48.39	61.27	91.74	100.00	113.16	81.73	130.29
Crucillo.....	0.11	157.35	187.59	58.63	63.39	45.03	60.13	100.00	98.22	59.25	127.54
Fafa.....	0.03	1,142.77	961.04	753.27	174.43	220.70	139.88	100.00	63.17	117.66	70.78
Dube.....	0.02	1,073.51	1,520.52	816.54	152.99	182.85	87.90	100.00	83.00	47.93	34.92
Edget.....	0.01	54.72	45.28	83.02	0.00	22.64	47.17	100.00	105.66	79.25	83.02
Famix.....	0.04	0.00	0.00	0.00	16.07	215.61	458.91	100.00	201.01	193.18	301.07

**ANNUAL INDICES OF LARGE AND MEDIUM SCALE MANUFACTURING INDUSTRIES PRODUCTION**

BY DETAILED INDUSTRIAL GROUPS AND ITEMS 1989/90 - 1998/99 G.C (1982 - 1991 E.F.Y)

**TABLE 2 ( Contd )**

DESCRIPTION OF ITEMS	Weight(%)	1982	1983	1984	1985	1986	1987	1988	1989	1990	1991
<b>Manufacture of prepared animal feeds.....</b>	<b>0.07</b>	<b>541.37</b>	<b>398.64</b>	<b>248.71</b>	<b>141.34</b>	<b>149.33</b>	<b>197.32</b>	<b>100.00</b>	<b>105.74</b>	<b>96.32</b>	<b>98.99</b>
Cattle Feed.....	0.04	506.53	369.52	117.10	95.63	110.32	84.13	100.00	116.45	101.89	113.79
Pottery Feed.....	0.03	586.98	436.77	421.04	201.19	200.42	345.54	100.00	91.71	89.01	79.60
<b>Manufacture of bakery products.....</b>	<b>1.83</b>	<b>194.67</b>	<b>185.38</b>	<b>108.15</b>	<b>78.02</b>	<b>77.69</b>	<b>100.12</b>	<b>100.00</b>	<b>90.47</b>	<b>135.61</b>	<b>140.56</b>
Bread.....	0.82	240.28	218.75	187.29	130.45	66.21	93.90	100.00	101.74	159.18	93.99
Cake(excluding Torta).....	0.08	83.85	177.67	157.31	135.54	173.79	108.05	100.00	80.09	82.31	56.10
Biscuit & Cookies.....	0.69	0.38	0.53	0.83	1.09	82.92	125.42	100.00	77.87	125.19	117.02
Galletta.....	0.20	727.42	704.20	134.02	104.24	52.27	45.13	100.00	105.23	93.36	442.96
Enjera.....	0.04	109.93	62.33	92.33	74.06	169.05	56.03	100.00	18.81	144.63	140.30
<b>Manufacture of sugar and sugar confectionery.....</b>	<b>19.22</b>	<b>102.10</b>	<b>84.44</b>	<b>87.21</b>	<b>80.06</b>	<b>72.96</b>	<b>76.00</b>	<b>100.00</b>	<b>98.11</b>	<b>100.38</b>	<b>134.16</b>
Sweet.....	0.57	183.05	128.98	94.60	97.67	99.40	89.03	100.00	46.47	110.05	74.31
Sugar.....	18.28	99.62	83.05	86.97	79.53	71.72	75.22	100.00	100.17	100.38	136.69
Molasses.....	0.38	100.63	85.04	87.78	79.40	93.03	93.90	100.00	76.11	85.94	102.28
<b>Manufacture of macaroni and spaghetti.....</b>	<b>1.26</b>	<b>104.63</b>	<b>100.05</b>	<b>22.90</b>	<b>40.01</b>	<b>76.82</b>	<b>130.90</b>	<b>100.00</b>	<b>124.29</b>	<b>136.45</b>	<b>164.76</b>
Macaroni & Spaghetti.....	1.26	104.63	100.05	22.90	40.01	76.82	130.90	100.00	124.29	136.45	164.76
<b>Manufacture of food products n.e.c.....</b>	<b>1.01</b>	<b>34.24</b>	<b>47.01</b>	<b>56.85</b>	<b>60.22</b>	<b>60.22</b>	<b>69.08</b>	<b>100.00</b>	<b>135.27</b>	<b>155.22</b>	<b>71.55</b>
Tea.....	0.85	34.24	49.45	57.87	57.87	57.87	67.95	100.00	106.01	121.80	81.50
Coffee(Milled).....	0.01	80.02	80.02	80.02	131.28	131.28	131.28	100.00	130.45	143.16	156.73
Paprika.....	0.15	30.53	30.53	49.19	67.84	67.84	70.52	100.00	301.81	345.94	8.20
<b>MANUFACTURE OF BEVERAGE PRODUCTS.....</b>	<b>12.15</b>	<b>81.49</b>	<b>73.07</b>	<b>66.41</b>	<b>74.04</b>	<b>62.74</b>	<b>95.06</b>	<b>100.00</b>	<b>99.30</b>	<b>96.75</b>	<b>100.33</b>
<b>Distilling, rectifying and blending of spirits</b>	<b>0.87</b>	<b>251.69</b>	<b>208.21</b>	<b>142.40</b>	<b>197.91</b>	<b>124.36</b>	<b>118.11</b>	<b>100.00</b>	<b>146.58</b>	<b>139.77</b>	<b>149.61</b>
Liquor.....	0.58	360.53	299.28	203.60	188.34	148.63	171.07	100.00	177.15	170.63	179.06
Alcohol.....	0.29	34.00	26.06	20.01	217.05	75.82	12.20	100.00	85.42	78.06	90.72

**ANNUAL INDICES OF LARGE AND MEDIUM SCALE MANUFACTURING INDUSTRIES PRODUCTION  
BY DETAILED INDUSTRIAL GROUPS AND ITEMS 1989/90 - 1998/99 G.C (1982 - 1991 E.F.Y)**

TABLE 2 ( Contd )

DESCRIPTION OF ITEMS	Weight(%)	1982	1983	1984	1985	1986	1987	1988	1989	1990	1991
<b>Wine industries.....</b>	<b>0.51</b>	<b>163.01</b>	<b>119.49</b>	<b>104.53</b>	<b>118.45</b>	<b>98.61</b>	<b>121.89</b>	<b>100.00</b>	<b>60.79</b>	<b>45.33</b>	<b>30.81</b>
Wine.....	0.51	163.01	119.49	104.53	118.45	98.61	121.89	100.00	60.79	45.33	30.81
<b>Malt liquors and malt.....</b>	<b>7.56</b>	<b>61.31</b>	<b>51.47</b>	<b>49.77</b>	<b>58.98</b>	<b>49.20</b>	<b>91.21</b>	<b>100.00</b>	<b>96.46</b>	<b>93.32</b>	<b>103.42</b>
Malt.....	0.70	103.95	69.58	59.44	52.88	53.06	63.95	100.00	99.48	78.97	77.87
Beer & Draft.....	6.86	56.99	49.64	48.79	59.59	48.81	93.97	100.00	96.15	94.77	106.01
<b>Soft drinks and carbonated water industries.....</b>	<b>3.21</b>	<b>69.98</b>	<b>79.98</b>	<b>78.96</b>	<b>68.95</b>	<b>72.24</b>	<b>93.63</b>	<b>100.00</b>	<b>99.40</b>	<b>101.45</b>	<b>90.89</b>
Lemonade.....	2.62	70.84	90.11	75.85	74.73	73.86	95.92	100.00	98.60	99.75	89.99
Mineral water.....	0.59	66.19	34.88	92.81	43.17	65.03	83.40	100.00	102.93	109.03	94.90
<b>MANUFACTURE OF TOBACCO PRODUCTS.....</b>	<b>4.82</b>	<b>121.25</b>	<b>129.75</b>	<b>100.91</b>	<b>103.77</b>	<b>78.87</b>	<b>85.01</b>	<b>100.00</b>	<b>108.72</b>	<b>108.97</b>	<b>98.24</b>
<b>manufacture of tobacco products.....</b>	<b>4.82</b>	<b>121.25</b>	<b>129.75</b>	<b>100.91</b>	<b>103.77</b>	<b>78.87</b>	<b>85.01</b>	<b>100.00</b>	<b>108.72</b>	<b>108.97</b>	<b>98.24</b>
Cigarette.....	4.82	121.25	129.75	100.91	103.77	78.87	85.01	100.00	108.72	108.97	98.24
<b>MANUFACTURE OF TEXTILES.....</b>	<b>9.62</b>	<b>112.86</b>	<b>45.72</b>	<b>69.71</b>	<b>71.73</b>	<b>89.16</b>	<b>106.64</b>	<b>100.00</b>	<b>92.05</b>	<b>84.30</b>	<b>95.20</b>
<b>Spinning, weaving and finishing of textiles.....</b>	<b>8.54</b>	<b>107.74</b>	<b>37.85</b>	<b>70.21</b>	<b>74.77</b>	<b>91.90</b>	<b>99.81</b>	<b>100.00</b>	<b>90.65</b>	<b>79.00</b>	<b>96.15</b>
Acrylic Yarn.....	0.17	42.66	236.81	212.23	182.58	169.93	193.56	100.00	180.12	259.87	136.36
Lint Cotton.....	0.31	10.29	10.29	14.96	73.22	64.34	61.37	100.00	130.85	99.16	161.81
Blanket Cotton(Waste Cotton & Others).....	1.29	146.31	0.00	65.00	53.09	65.19	119.76	100.00	62.06	51.80	53.24
Blanket Wool.....	0.04	42.20	2.84	3.34	25.93	104.09	99.21	100.00	118.75	104.37	115.44
Carpet.....	0.14	0.00	1.88	34.98	68.30	75.47	96.68	100.00	67.73	35.46	8.45
Cotton Seed.....	1.60	6.46	11.85	14.92	35.17	47.53	47.38	100.00	133.87	75.77	136.26
Cotton Yarn.....	1.48	199.31	56.50	100.92	87.35	43.79	120.73	100.00	87.89	72.79	84.71
Sewing Thread.....	0.02	1,433.73	946.29	420.42	529.22	267.94	521.12	100.00	118.93	185.85	125.00
Cotton Fabrics.....	3.47	112.08	46.18	83.59	89.75	141.67	105.25	100.00	74.80	83.15	94.21
Bed Sheet.....	0.02	141.55	130.05	12.57	7.31	19.82	27.57	100.00	144.28	191.45	27.26

**ANNUAL INDICES OF LARGE AND MEDIUM SCALE MANUFACTURING INDUSTRIES PRODUCTION**

**BY DETAILED INDUSTRIAL GROUPS AND ITEMS 1989/90 - 1998/99 G.C (1982 - 1991 E.F.Y)**

**TABLE 2 ( Contd )**

DESCRIPTION OF ITEMS	Weight(%)	1982	1983	1984	1985	1986	1987	1988	1989	1990	1991
<b>Manufacture of cordage, rope, twine and netting...</b>	1.03	151.92	109.52	63.68	43.71	68.24	165.56	100.00	104.46	121.85	90.68
Hessian Cloth.....	0.06	33.96	61.41	22.91	42.54	117.63	62.12	100.00	65.23	28.31	125.01
Twine and Rope.....	0.03	83.61	107.29	81.25	151.72	81.97	5.71	100.00	189.57	89.07	160.37
Processed Sisal.....	0.01	0.00	103.70	90.18	0.00	100.89	113.15	100.00	100.00	0.00	101.39
Gunny Bags.....	0.92	164.94	112.96	65.36	40.48	63.84	179.38	100.00	104.02	131.39	85.58
<b>knitting mills.....</b>	<b>0.05</b>	<b>186.89</b>	<b>79.06</b>	<b>109.99</b>	<b>130.39</b>	<b>50.53</b>	<b>62.37</b>	<b>100.00</b>	<b>75.75</b>	<b>220.01</b>	<b>23.55</b>
Sweater.....	0.02	74.05	66.45	76.39	87.81	74.60	86.77	100.00	96.77	114.45	12.52
Under Wear.....	0.03	242.28	85.25	126.48	151.29	38.71	50.38	100.00	65.43	271.83	28.96
<b>MANUFACTURE OF WEARING APPAREL</b>											
<b>EXCEPT FUR APPAREL.....</b>	<b>0.53</b>	<b>261.68</b>	<b>193.40</b>	<b>27.99</b>	<b>104.96</b>	<b>212.68</b>	<b>114.21</b>	<b>100.00</b>	<b>118.67</b>	<b>128.38</b>	<b>71.26</b>
<b>Manufacture of wearing apparel except fur apparel</b>	<b>0.53</b>	<b>261.68</b>	<b>193.40</b>	<b>27.99</b>	<b>104.96</b>	<b>212.68</b>	<b>114.21</b>	<b>100.00</b>	<b>118.67</b>	<b>128.38</b>	<b>71.26</b>
Shirts.....	0.15	740.65	580.32	61.28	259.96	492.04	151.37	100.00	178.79	208.02	135.47
Coat and Trouser.....	0.03	57.74	57.74	57.74	57.74	57.74	57.74	100.00	101.32	52.98	37.93
Umbrella.....	0.35	73.33	38.91	11.37	42.50	105.72	102.86	100.00	94.36	100.40	46.49
<b>MANUFACTURE OF TANNING, DRESSING</b>											
<b>LUGGAGE &amp; FOOTWEAR.....</b>	<b>9.17</b>	<b>123.07</b>	<b>86.61</b>	<b>75.22</b>	<b>98.34</b>	<b>98.84</b>	<b>99.23</b>	<b>100.00</b>	<b>99.86</b>	<b>109.45</b>	<b>206.98</b>
<b>Manufacture of Tanning and dressing of leather.....</b>	<b>6.69</b>	<b>122.13</b>	<b>77.98</b>	<b>71.13</b>	<b>99.43</b>	<b>98.71</b>	<b>96.65</b>	<b>100.00</b>	<b>93.25</b>	<b>111.36</b>	<b>241.69</b>
Crust Hide.....	0.40	103.14	109.92	78.84	87.48	184.36	223.55	100.00	34.83	108.55	35.85
Wet Blue Goat.....	0.30	56.07	66.58	70.20	104.38	88.47	98.08	100.00	104.31	143.30	63.31
Lining Sheep.....	2.39	150.89	96.99	173.03	190.17	152.47	160.10	100.00	119.85	50.19	388.88
Pickled Sheep.....	0.08	38.07	56.35	66.73	90.78	79.14	88.13	100.00	84.12	122.11	65.90
Upper Leather.....	0.02	179.58	179.75	179.92	174.12	99.14	83.32	100.00	75.93	110.14	150.26
Crust Sheep.....	3.50	111.77	62.08	0.00	38.00	53.48	38.95	100.00	81.10	150.51	184.41

**ANNUAL INDICES OF LARGE AND MEDIUM SCALE MANUFACTURING INDUSTRIES PRODUCTION**  
**BY DETAILED INDUSTRIAL GROUPS AND ITEMS 1989/90 - 1998/99 G.C (1982 - 1991 E.F.Y)**

TABLE 2 ( Contd )

DESCRIPTION OF ITEMS	Weight(%)	1982	1983	1984	1985	1986	1987	1988	1989	1990	1991
<b>Manufacture of footwear.....</b>	<b>2.48</b>	<b>125.58</b>	<b>109.85</b>	<b>86.23</b>	<b>95.42</b>	<b>99.21</b>	<b>106.16</b>	<b>100.00</b>	<b>117.68</b>	<b>104.30</b>	<b>113.52</b>
Leather Footwear.....	1.67	124.96	113.88	84.14	91.17	100.08	98.32	100.00	87.13	80.12	103.12
Plastic and Rubber Footwear.....	0.35	262.62	202.79	184.19	138.59	118.78	158.00	100.00	277.44	241.53	254.02
Plastic Shoe Sole.....	0.46	22.33	23.56	18.46	77.71	80.94	94.87	100.00	106.15	86.92	43.30
<b>MANUFACTURE OF WOOD AND OF PRODUCTS OF WOOD AND CORK, EXCEPT FURNITURE ...</b>	<b>2.02</b>	<b>114.92</b>	<b>92.86</b>	<b>109.26</b>	<b>110.72</b>	<b>104.88</b>	<b>116.37</b>	<b>100.00</b>	<b>127.37</b>	<b>73.47</b>	<b>80.05</b>
<b>Manufacture of wood and of products of wood and cork, except furniture.....</b>	<b>2.02</b>	<b>114.92</b>	<b>92.86</b>	<b>109.26</b>	<b>110.72</b>	<b>104.88</b>	<b>116.37</b>	<b>100.00</b>	<b>127.37</b>	<b>73.47</b>	<b>80.05</b>
Timber.....	0.64	128.24	98.04	86.79	96.14	135.25	133.40	100.00	120.75	58.34	83.81
Plywood.....	0.24	182.37	133.02	245.62	142.54	106.06	126.68	100.00	88.06	91.88	35.07
Particle Board.....	1.14	93.17	81.46	93.17	112.23	87.50	104.58	100.00	139.39	78.11	87.42
<b>MANUFACTURE OF PAPER &amp; PAPER PRODUCTS AND PRINTING.....</b>	<b>6.65</b>	<b>89.44</b>	<b>72.84</b>	<b>84.61</b>	<b>93.10</b>	<b>99.89</b>	<b>86.77</b>	<b>100.00</b>	<b>98.54</b>	<b>111.64</b>	<b>135.00</b>
<b>Manufacture of paper &amp; paper products.....</b>	<b>1.72</b>	<b>76.22</b>	<b>67.23</b>	<b>43.62</b>	<b>86.04</b>	<b>103.82</b>	<b>84.44</b>	<b>100.00</b>	<b>86.64</b>	<b>114.51</b>	<b>216.89</b>
Exercise Book.....	0.13	0.00	341.77	90.39	117.82	181.36	104.73	100.00	96.15	178.31	756.44
Paper.....	1.34	79.51	46.37	37.34	84.41	91.48	79.86	100.00	85.24	114.27	59.40
Toilet Tissue.....	0.23	99.94	28.04	49.60	81.23	128.19	100.09	100.00	88.52	78.89	670.91
Napkin.....	0.02	97.92	87.95	94.32	28.01	146.50	77.91	100.00	98.66	109.27	2,432.94
<b>Manufacture of publishing &amp; printing services.....</b>	<b>4.93</b>	<b>94.06</b>	<b>74.80</b>	<b>98.92</b>	<b>95.56</b>	<b>98.52</b>	<b>87.58</b>	<b>100.00</b>	<b>102.69</b>	<b>110.63</b>	<b>106.40</b>
Paper.....	4.93	94.06	74.80	98.92	95.56	98.52	87.58	100.00	102.69	110.63	106.40

**ANNUAL INDICES OF LARGE AND MEDIUM SCALE MANUFACTURING INDUSTRIES PRODUCTION**

**BY DETAILED INDUSTRIAL GROUPS AND ITEMS 1989/90 - 1998/99 G.C (1982 - 1991 E.F.Y)**

**TABLE 2 ( Contd )**

DESCRIPTION OF ITEMS	Weight(%)	1982	1983	1984	1985	1986	1987	1988	1989	1990	1991
<b>MANUFACTURE OF CHEMICAL AND CHEMICAL PRODUCTS.....</b>	<b>3.65</b>	<b>63.67</b>	<b>35.85</b>	<b>58.07</b>	<b>86.02</b>	<b>94.28</b>	<b>86.79</b>	<b>100.00</b>	<b>112.21</b>	<b>93.40</b>	<b>143.04</b>
<b>Manufacture of basic chemicals, except fertilizers and nitrogen compounds.....</b>	<b>-1.06</b>	<b>74.23</b>	<b>73.15</b>	<b>83.01</b>	<b>66.77</b>	<b>84.16</b>	<b>95.59</b>	<b>100.00</b>	<b>82.69</b>	<b>112.81</b>	<b>117.57</b>
Sedex.....	-0.21	58.57	52.50	107.92	96.36	102.61	82.53	100.00	121.82	147.94	237.23
Acetylene.....	-0.12	90.68	70.02	48.54	67.81	94.43	102.85	100.00	90.88	139.99	148.59
Oxygen.....	-0.31	73.67	65.68	62.51	71.71	84.64	95.94	100.00	89.07	138.46	133.94
Carbondioxide(CO <sub>2</sub> ).....	-0.42	78.10	90.08	95.03	47.74	71.58	100.00	100.00	55.75	68.36	35.90
<b>Manufacture of paints, varnishes and lacquers.....</b>	<b>1.08</b>	<b>36.33</b>	<b>40.37</b>	<b>24.71</b>	<b>64.00</b>	<b>84.18</b>	<b>86.89</b>	<b>100.00</b>	<b>101.76</b>	<b>106.21</b>	<b>119.38</b>
Adhesives & Mastics.....	0.01	17.68	31.95	31.77	236.88	241.70	252.32	100.00	879.56	478.14	470.43
Varnishes & Lacquers.....	0.05	39.41	26.87	20.99	112.74	42.63	64.37	100.00	90.32	109.37	121.56
Paints.....	1.02	36.37	41.16	24.83	59.62	84.64	86.28	100.00	93.99	102.05	115.50
<b>Manufacture of pharmaceuticals, medicinal chemicals and botanical products.....</b>	<b>0.95</b>	<b>167.55</b>	<b>103.85</b>	<b>100.26</b>	<b>135.36</b>	<b>119.61</b>	<b>103.14</b>	<b>100.00</b>	<b>152.61</b>	<b>156.16</b>	<b>147.86</b>
Injection of 100A.....	0.05	184.85	123.32	117.45	149.53	104.86	156.49	100.00	159.45	174.19	143.38
Tablets.....	0.03	223.27	144.29	112.71	172.02	177.13	192.93	100.00	183.23	227.74	289.35
Capsules.....	0.52	155.11	95.08	97.55	144.34	126.46	72.95	100.00	161.80	154.47	138.97
Syrup.....	0.08	110.21	84.05	50.21	102.53	97.74	122.58	100.00	138.41	183.59	164.26
Antibiotics.....	0.12	234.85	167.66	138.94	137.35	129.50	147.61	100.00	182.43	188.98	194.18
ORS.....	0.06	49.68	34.72	69.22	33.39	32.21	69.26	100.00	50.39	49.10	72.30
IV Fluid.....	0.06	57.07	81.23	79.99	99.98	80.79	117.16	100.00	117.51	139.92	134.50
Ointment.....	0.03	572.86	158.56	174.15	248.43	220.52	242.02	100.00	142.97	131.27	125.90

**ANNUAL INDICES OF LARGE AND MEDIUM SCALE MANUFACTURING INDUSTRIES PRODUCTION**  
**BY DETAILED INDUSTRIAL GROUPS AND ITEMS 1989/90 - 1998/99 G.C (1982 - 1991 E.F.Y)**

TABLE 2 ( Contd )

DESCRIPTION OF ITEMS	Weight(%)	1982	1983	1984	1985	1986	1987	1988	1989	1990	1991
<b>Manufacture of soap and detergents cleaning and polishing perfumes and toilet preparations .....</b>	<b>2.19</b>	<b>44.48</b>	<b>24.99</b>	<b>71.30</b>	<b>72.41</b>	<b>84.99</b>	<b>86.34</b>	<b>100.00</b>	<b>86.71</b>	<b>64.96</b>	<b>155.76</b>
Paraffin, Graycylinc and Related Cosmetics.....	0.15	35.33	65.39	99.55	105.19	120.28	128.43	100.00	197.24	182.93	433.86
Soap.....	2.04	45.15	22.04	69.24	70.02	82.42	83.27	100.00	78.64	56.35	135.47
<b>Manufacture of chemical products n.e.c.....</b>	<b>0.49</b>	<b>32.30</b>	<b>24.15</b>	<b>45.27</b>	<b>58.60</b>	<b>87.26</b>	<b>76.16</b>	<b>100.00</b>	<b>107.27</b>	<b>113.09</b>	<b>74.23</b>
Candles.....	0.24	37.17	30.09	61.36	69.47	80.09	57.23	100.00	132.89	169.76	106.05
Floor Wax.....	0.01	4.53	4.04	1.59	9.06	5.41	2.15	100.00	2.49	6.47	4.10
Drycell Battery.....	0.24	28.70	19.06	30.92	49.90	98.80	99.40	100.00	86.17	60.10	45.01
<b>MANUFACTURE OF RUBBER &amp; PLASTIC PRODUCTS.....</b>	<b>3.48</b>	<b>106.50</b>	<b>67.00</b>	<b>67.20</b>	<b>90.65</b>	<b>151.24</b>	<b>143.12</b>	<b>100.00</b>	<b>150.21</b>	<b>161.92</b>	<b>153.39</b>
<b>Manufacture of rubber products.....</b>	<b>1.79</b>	<b>150.51</b>	<b>85.44</b>	<b>84.66</b>	<b>123.38</b>	<b>211.16</b>	<b>206.19</b>	<b>100.00</b>	<b>186.23</b>	<b>189.87</b>	<b>182.77</b>
Recapped Tyre.....	0.11	104.69	123.47	92.29	43.09	64.16	99.30	100.00	132.15	181.35	70.12
Tyre.....	1.64	151.04	83.01	85.92	129.67	222.58	217.72	100.00	190.49	189.39	189.26
Tube.....	0.04	252.08	79.61	14.34	89.75	153.67	37.22	100.00	162.78	231.40	227.98
<b>Manufacture of plastic products.....</b>	<b>1.69</b>	<b>59.81</b>	<b>47.45</b>	<b>48.68</b>	<b>55.93</b>	<b>87.69</b>	<b>76.22</b>	<b>100.00</b>	<b>112.00</b>	<b>132.28</b>	<b>122.23</b>
Foam.....	0.46	38.16	22.61	24.89	44.99	61.75	73.85	100.00	105.68	116.02	86.85
Plastic Crates.....	0.11	65.04	68.39	42.72	59.18	126.36	100.00	100.00	59.24	79.42	160.58
Electric Cable and Wire.....	0.11	57.78	52.42	56.18	67.59	122.97	90.89	100.00	104.63	134.99	98.55
Plastic Bags(PP Bags).....	0.41	4.89	4.89	4.89	4.89	16.43	24.98	100.00	65.49	116.26	116.61
Ball Pen.....	0.02	154.54	132.22	111.85	177.70	239.76	256.85	100.00	139.90	177.56	173.09
Polyethylene Products.....	0.55	115.15	92.85	98.48	97.05	141.82	101.94	100.00	162.51	164.73	147.30
Plastic Tubes and Pipes.....	0.02	75.37	42.64	66.82	47.65	133.63	116.81	100.00	125.15	167.80	240.48

**ANNUAL INDICES OF LARGE AND MEDIUM SCALE MANUFACTURING INDUSTRIES PRODUCTION**  
**BY DETAILED INDUSTRIAL GROUPS AND ITEMS 1989/90 - 1998/99 G.C (1982 - 1991 E.F.Y)**

**TABLE 2 ( Contd )**

DESCRIPTION OF ITEMS	Weight(%)	1982	1983	1984	1985	1986	1987	1988	1989	1990	1991
<b>MANUFACTURE OF OTHER NON - METALLIC MINERAL PRODUCTS.....</b>	<b>9.49</b>	<b>42.46</b>	<b>42.97</b>	<b>41.13</b>	<b>49.96</b>	<b>71.87</b>	<b>94.36</b>	<b>100.00</b>	<b>113.75</b>	<b>91.03</b>	<b>78.53</b>
<b>Manufacture of glass and glass products.....</b>	<b>0.66</b>	<b>14.70</b>	<b>87.56</b>	<b>37.82</b>	<b>37.65</b>	<b>94.60</b>	<b>144.01</b>	<b>100.00</b>	<b>76.90</b>	<b>147.06</b>	<b>116.63</b>
Glass.....	0.10	2.70	10.02	10.02	22.32	40.36	101.94	100.00	21.05	65.33	0.00
Glass Bottles.....	0.55	16.94	102.00	43.00	40.51	104.70	151.85	100.00	87.31	162.28	138.36
<b>Manufacture of structural clay products.....</b>	<b>0.25</b>	<b>124.10</b>	<b>137.22</b>	<b>135.10</b>	<b>12.57</b>	<b>124.14</b>	<b>123.56</b>	<b>100.00</b>	<b>126.21</b>	<b>125.26</b>	<b>122.86</b>
Bricks of clay.....	0.25	124.10	137.22	135.10	12.57	124.14	123.56	100.00	126.21	125.26	122.86
<b>Manufacture of cement, lime and plaster.....</b>	<b>6.01</b>	<b>48.56</b>	<b>40.43</b>	<b>39.30</b>	<b>56.05</b>	<b>68.79</b>	<b>90.78</b>	<b>100.00</b>	<b>114.97</b>	<b>72.82</b>	<b>70.20</b>
Cement.....	5.91	48.13	40.16	38.80	56.07	69.06	90.60	100.00	115.20	72.47	69.82
Lime & Gypsum.....	0.07	43.13	54.14	54.10	51.65	46.54	97.15	100.00	93.62	87.08	88.27
Chalk.....	0.03	152.25	62.42	108.16	62.50	66.33	113.50	100.00	120.11	112.62	104.52
<b>Manufacture of articles of concrete, cement and plaster.....</b>	<b>1.77</b>	<b>33.48</b>	<b>30.69</b>	<b>40.81</b>	<b>41.58</b>	<b>54.36</b>	<b>60.18</b>	<b>100.00</b>	<b>103.55</b>	<b>68.78</b>	<b>71.93</b>
Hallow Blocks.....	0.93	45.04	40.19	59.81	67.46	75.01	85.44	100.00	147.85	93.09	98.52
Floor Tiles.....	0.51	25.48	22.22	20.84	11.98	38.16	38.56	100.00	71.36	49.02	57.87
Cement Tubes.....	0.33	12.93	16.71	17.57	13.62	20.55	21.66	100.00	27.09	30.03	17.84
<b>Manufacture of non-metallic mineral products N.E.C</b>	<b>0.81</b>	<b>14.34</b>	<b>23.68</b>	<b>29.40</b>	<b>44.47</b>	<b>98.53</b>	<b>146.14</b>	<b>100.00</b>	<b>152.91</b>	<b>218.55</b>	<b>110.25</b>
Marble.....	0.42	27.19	44.89	56.01	85.63	111.55	129.35	100.00	127.76	315.24	134.37
Gravel.....	0.05	7.03	11.70	12.16	10.36	133.40	722.82	100.00	183.65	308.30	274.17
Lime Stone.....	0.35	0.00	0.00	0.00	0.00	78.31	88.49	100.00	178.74	91.22	59.43

**ANNUAL INDICES OF LARGE AND MEDIUM SCALE MANUFACTURING INDUSTRIES PRODUCTION**  
**BY DETAILED INDUSTRIAL GROUPS AND ITEMS 1989/90 - 1998/99 G.C (1982 - 1991 E.F.Y)**

TABLE 2 ( Contd )

DESCRIPTION OF ITEMS	Weight(%)	1982	1983	1984	1985	1986	1987	1988	1989	1990	1991
<b>MANUFACTURE OF BASIC IRON AND STEEL.....</b>	<b>3.08</b>	<b>99.02</b>	<b>70.73</b>	<b>42.80</b>	<b>73.36</b>	<b>122.99</b>	<b>186.85</b>	<b>100.00</b>	<b>225.88</b>	<b>180.00</b>	<b>135.96</b>
<b>Manufacture of basic iron and steel.....</b>	<b>3.08</b>	<b>99.02</b>	<b>70.73</b>	<b>42.80</b>	<b>73.36</b>	<b>122.99</b>	<b>186.85</b>	<b>100.00</b>	<b>225.88</b>	<b>180.00</b>	<b>135.96</b>
Iron Bars.....	0.44	642.54	441.33	250.56	476.10	769.63	815.27	100.00	734.43	535.20	462.21
Iron Sheets.....	0.21	73.79	43.91	13.48	20.25	115.77	89.01	100.00	136.04	127.10	9.72
Bed Spring and Net.....	0.04	147.45	286.73	134.18	121.94	175.51	43.37	100.00	237.76	22.45	54.08
Wires.....	0.01	78.87	12.34	62.13	66.95	103.35	105.02	100.00	97.49	97.49	134.73
Corrugate Iron Sheet.....	2.11	0.00	0.00	0.00	0.00	0.00	72.82	100.00	141.79	122.61	90.82
Structural Tubes.....	0.09	0.00	4.27	0.00	21.38	0.00	89.81	100.00	95.56	31.25	30.29
Water Pipe.....	0.17	0.00	9.39	70.39	26.12	44.28	195.26	100.00	144.90	167.26	88.46
<b>MANUFACTURE OF FABRICATED METAL PRODUCTS EXCEPT MACHINERY AND EQUIPMENT.....</b>	<b>2.22</b>	<b>56.47</b>	<b>40.06</b>	<b>39.06</b>	<b>59.82</b>	<b>95.56</b>	<b>101.13</b>	<b>100.00</b>	<b>99.86</b>	<b>82.79</b>	<b>72.69</b>
<b>Manufacture of structural metal products,tanks, reservoirs and containers of metal.....</b>	<b>0.35</b>	<b>18.05</b>	<b>7.92</b>	<b>4.15</b>	<b>5.96</b>	<b>53.68</b>	<b>39.73</b>	<b>100.00</b>	<b>97.92</b>	<b>89.42</b>	<b>57.57</b>
Metalic Door & Window.....	0.35	18.05	7.92	4.15	5.96	53.68	39.73	100.00	97.92	89.42	57.57
<b>Manufacture of cutlery, hand tools and general hardware.....</b>	<b>0.47</b>	<b>55.46</b>	<b>47.83</b>	<b>71.86</b>	<b>97.12</b>	<b>142.77</b>	<b>171.26</b>	<b>100.00</b>	<b>55.85</b>	<b>41.36</b>	<b>47.15</b>
Cooking Pans.....	0.17	79.50	94.75	120.95	161.94	234.02	184.11	100.00	78.55	40.43	39.61
Kettles.....	0.03	38.53	35.88	38.78	108.13	116.69	124.67	100.00	135.29	137.84	83.59
Souce Pans.....	0.02	0.00	0.18	0.00	3.99	1.96	1.54	100.00	0.61	1.63	36.58
wash Basin.....	0.01	56.25	62.16	453.43	32.50	248.83	63.98	100.00	93.29	74.19	52.35
Spade.....	0.04	167.05	60.58	131.42	206.31	137.11	152.12	100.00	50.57	35.01	19.74
Axe.....	0.03	5.92	0.00	30.40	33.07	89.93	123.11	100.00	1.63	7.02	69.83
Pickaxe.....	0.02	66.16	89.99	1.65	101.62	329.67	202.82	100.00	124.49	42.31	62.57

**ANNUAL INDICES OF LARGE AND MEDIUM SCALE MANUFACTURING INDUSTRIES PRODUCTION**  
**BY DETAILED INDUSTRIAL GROUPS AND ITEMS 1989/90 - 1998/99 G.C (1982 - 1991 E.F.Y)**

**TABLE 2 ( Contd )**

DESCRIPTION OF ITEMS	Weight(%)	1982	1983	1984	1985	1986	1987	1988	1989	1990	1991
Hand Tool (Dejino).....	0.05	0.00	0.00	0.00	0.00	0.00	0.00	100.00	4.29	9.33	117.50
Hammer.....	0.03	39.75	20.24	15.07	75.78	105.97	20.36	100.00	68.97	75.29	0.00
Sickles.....	0.03	68.17	13.71	13.55	56.35	174.06	158.54	100.00	34.16	0.00	0.00
Mold.....	0.04	0.00	0.00	0.00	0.00	0.00	635.85	100.00	11.32	55.66	38.68
<b>Manufacture of other fabricated metal products.....</b>	<b>1.40</b>	<b>66.28</b>	<b>45.36</b>	<b>36.60</b>	<b>60.51</b>	<b>89.96</b>	<b>92.60</b>	<b>100.00</b>	<b>115.20</b>	<b>95.14</b>	<b>85.05</b>
Crown Cork.....	0.66	83.90	53.78	56.80	47.79	83.16	87.53	100.00	119.70	92.17	81.72
Tincan.....	0.21	81.13	52.94	52.33	82.99	95.88	88.71	100.00	122.37	128.51	114.97
Motor vehicles spring.....	0.15	59.78	42.71	4.27	47.23	91.78	125.34	100.00	97.31	86.47	77.02
Nails.....	0.38	30.14	27.64	5.72	75.55	97.79	90.58	100.00	110.53	85.45	77.61
<b>MANUFACTURE OF MACHINERY AND EQUIPMENT N.E.C.....</b>	<b>0.23</b>	<b>30.46</b>	<b>22.33</b>	<b>16.89</b>	<b>33.14</b>	<b>87.55</b>	<b>46.32</b>	<b>100.00</b>	<b>95.05</b>	<b>31.68</b>	<b>36.15</b>
<b>Manufacture of ovens, furnaces and furnace burners</b>	<b>0.05</b>	<b>59.15</b>	<b>53.53</b>	<b>42.65</b>	<b>74.89</b>	<b>101.04</b>	<b>87.74</b>	<b>100.00</b>	<b>82.26</b>	<b>38.09</b>	<b>42.03</b>
Electric Ovens.....	0.05	59.15	53.53	42.65	74.89	101.04	87.74	100.00	82.26	38.09	42.03
<b>Manufacture of other general purpose machinery...</b>	<b>0.09</b>	<b>0.00</b>	<b>0.00</b>	<b>0.00</b>	<b>0.00</b>	<b>48.95</b>	<b>25.64</b>	<b>100.00</b>	<b>60.61</b>	<b>27.74</b>	<b>46.15</b>
Weighing Machine.....	0.09	0.00	0.00	0.00	0.00	48.95	25.64	100.00	60.61	27.74	46.15
<b>Manufacture of machinery for food and beverage processing.....</b>	<b>0.07</b>	<b>0.00</b>	<b>0.00</b>	<b>0.00</b>	<b>0.00</b>	<b>90.91</b>	<b>22.08</b>	<b>100.00</b>	<b>156.49</b>	<b>30.52</b>	<b>19.48</b>
Flour Mill Machine (Quat).....	0.07	0.00	0.00	0.00	0.00	90.91	22.08	100.00	156.49	30.52	19.48
<b>Manufacture of accumulators, primary cells and primary batteries.....</b>	<b>0.01</b>	<b>277.51</b>	<b>162.43</b>	<b>114.07</b>	<b>259.26</b>	<b>260.24</b>	<b>145.21</b>	<b>100.00</b>	<b>25.43</b>	<b>37.31</b>	<b>41.12</b>
Car Battery.....	0.01	277.51	162.43	114.07	259.26	260.24	145.21	100.00	25.43	37.31	41.12

**ANNUAL INDICES OF LARGE AND MEDIUM SCALE MANUFACTURING INDUSTRIES PRODUCTION  
BY DETAILED INDUSTRIAL GROUPS AND ITEMS 1989/90 - 1998/99 G.C (1982 - 1991 E.F.Y)**

**TABLE 2 ( Contd )**

<b>DESCRIPTION OF ITEMS</b>	<b>Weight(%)</b>	<b>1982</b>	<b>1983</b>	<b>1984</b>	<b>1985</b>	<b>1986</b>	<b>1987</b>	<b>1988</b>	<b>1989</b>	<b>1990</b>	<b>1991</b>
<b>ASSEMBLY OF MOTOR VEHICLES TRAILERS &amp; SEMI-TRAILERS.....</b>	<b>2.35</b>	<b>123.47</b>	<b>123.57</b>	<b>123.35</b>	<b>293.78</b>	<b>369.61</b>	<b>254.16</b>	<b>100.00</b>	<b>28.60</b>	<b>30.26</b>	<b>48.08</b>
<b>Assembly and manufacture of bodies for motor vehicles.....</b>	<b>2.35</b>	<b>123.47</b>	<b>123.57</b>	<b>123.35</b>	<b>293.78</b>	<b>369.61</b>	<b>254.16</b>	<b>100.00</b>	<b>28.60</b>	<b>30.26</b>	<b>48.08</b>
Car Body.....	0.05	28.00	49.60	54.40	56.80	85.60	91.20	100.00	128.80	108.80	388.80
Bus and Truck.....	0.07	11.69	13.26	12.36	28.09	43.60	138.43	100.00	46.52	49.44	182.02
Trailer.....	0.05	49.18	29.51	14.75	0.00	93.44	265.57	100.00	40.98	93.44	354.10
Tractor.....	2.03	140.85	140.85	140.85	338.03	422.54	281.69	100.00	26.76	28.17	32.39
Bicycle.....	0.16	0.00	0.00	0.00	0.00	0.00	0.00	100.00	10.58	6.84	0.00
<b>MANUFACTURE OF FURNITURE.....</b>	<b>1.55</b>	<b>87.86</b>	<b>97.77</b>	<b>98.25</b>	<b>106.96</b>	<b>115.15</b>	<b>101.03</b>	<b>100.00</b>	<b>106.65</b>	<b>109.55</b>	<b>112.18</b>
<b>Manufacture of furniture.....</b>	<b>1.55</b>	<b>87.86</b>	<b>97.77</b>	<b>98.25</b>	<b>106.96</b>	<b>115.15</b>	<b>101.03</b>	<b>100.00</b>	<b>106.65</b>	<b>109.55</b>	<b>112.18</b>
Plunk.....	0.87	84.43	99.88	99.19	106.34	111.46	91.04	100.00	55.77	84.93	80.89
Plywood.....	0.27	84.81	56.23	60.06	70.20	67.30	61.58	100.00	127.49	119.02	167.18
Formica.....	0.05	139.51	205.86	205.27	95.03	95.13	212.67	100.00	158.36	176.39	103.64
Chipwood.....	0.23	71.91	128.21	119.67	168.34	199.53	138.83	100.00	272.51	161.43	222.22
Vineer.....	0.13	124.81	71.03	89.10	83.18	97.60	137.55	100.00	89.78	136.28	15.47
<b>ALL MANUFACTURING</b>	<b>100.00</b>	<b>101.69</b>	<b>81.41</b>	<b>74.08</b>	<b>83.75</b>	<b>91.91</b>	<b>100.81</b>	<b>100.00</b>	<b>106.41</b>	<b>102.65</b>	<b>122.98</b>

**ANNUAL GROWTH RATE OF LARGE AND MEDIUM SCALE MANUFACTURING INDUSTRIES PRODUCTION  
BY MAJOR INDUSTRIAL GROUPS 1990/91 - 1998/99 G.C (1983-1991 E.F.Y.)**

**Table 3**

INDUSTRIAL GROUP	1983	1984	1985	1986	1987	1988	1989	1990	1991	Ave.growth
										1983-1991
FOOD	-12.72	-20.62	-12.08	-3.46	16.70	19.20	1.75	2.93	32.33	2.67
BEVERAGE	-10.33	-9.11	11.49	-15.26	51.52	5.19	-0.70	-2.57	3.70	3.77
TOBACCO	7.01	-22.23	2.83	-24.00	7.79	17.64	8.72	0.23	-9.85	-1.32
TEXTILES	-59.49	52.48	2.90	24.29	19.61	-6.23	-7.95	-8.42	12.92	3.35
WEARING APPAREL	-26.09	-85.53	274.97	102.63	-46.30	-12.44	18.67	8.19	-44.50	21.07
TANNING, LEATHER AND FOOTWEAR	-29.63	-13.15	30.74	0.51	0.39	0.78	-0.14	9.59	89.12	9.80
WOOD	-19.20	17.67	1.33	-5.28	10.95	-14.06	27.37	-42.32	8.97	-1.62
PAPER & PRINTING	-18.56	16.16	10.03	7.30	-13.14	15.25	-1.46	13.29	20.93	5.53
CHEMICALS	-43.69	61.99	48.13	9.60	-7.95	15.22	12.21	-16.77	53.16	14.66
RUBBER & PLASTICS PRODUCTS	-37.08	0.29	34.90	66.85	-5.37	-30.13	50.21	7.80	-5.27	9.13
NON - METAL	1.19	-4.26	21.46	43.86	31.28	5.98	13.75	-19.97	-13.74	8.84
BASIC IRON AND STEEL	-28.57	-39.49	71.40	67.65	51.92	-46.48	125.88	-20.31	-24.47	17.50
FABRICATED METAL PRODUCTS	-29.06	-2.50	53.15	59.75	5.83	-1.12	-0.14	-17.09	-12.20	6.29
MACHINERY AND EQUIPMENT	-26.69	-24.36	96.21	164.18	-47.09	115.89	-4.95	-66.67	14.11	24.51
ASSEMBLY OF MOTOR VEHICLES	0.08	-0.18	138.17	25.81	-31.24	-60.65	-71.40	5.80	58.89	7.25
FURNITURE	11.27	0.49	8.87	7.66	-12.27	-1.02	6.65	2.72	2.40	2.97
<b>ALL MANUFACTURING</b>	<b>-19.94</b>	<b>-9.01</b>	<b>13.06</b>	<b>9.74</b>	<b>9.68</b>	<b>-0.80</b>	<b>6.41</b>	<b>-3.53</b>	<b>19.80</b>	<b>2.82</b>

FIG. 1: ANNUAL INDICES OF LARGE AND MEDIUM SCALE MANUFACTURING INDUSTRIES PRODUCTION  
1989/90 - 1998/99 G.C(1982-1991 E.F.Y.)

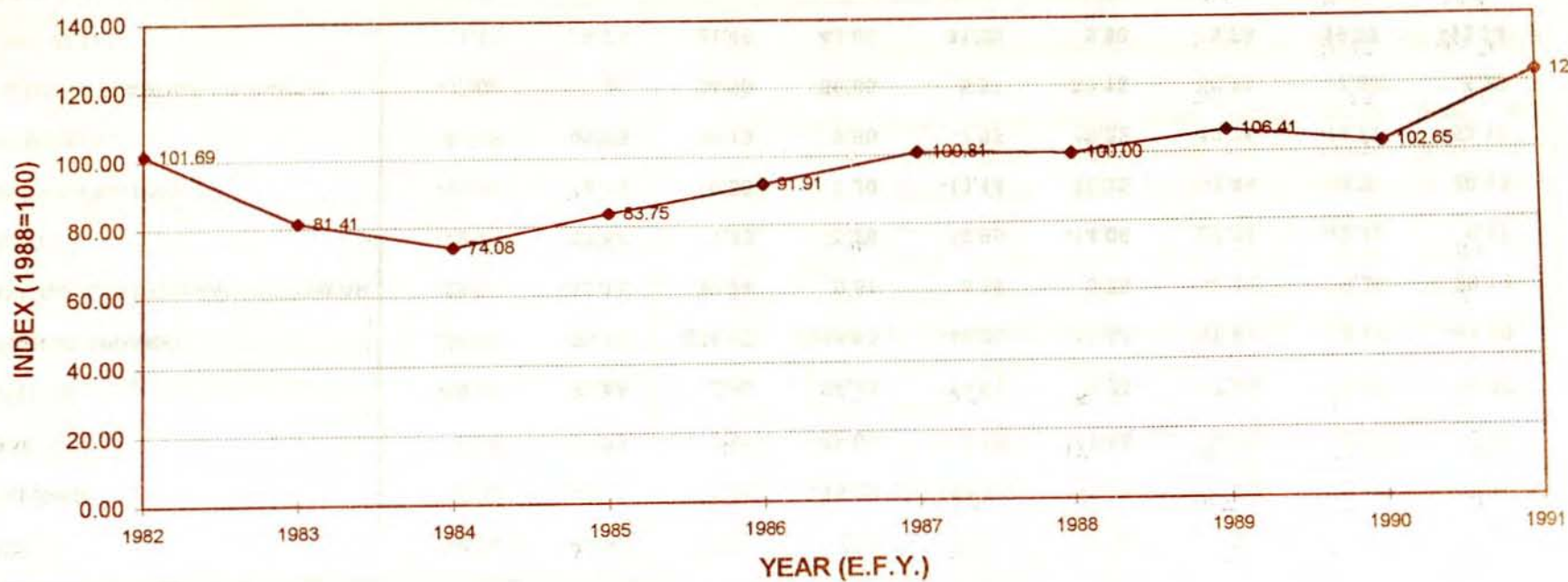
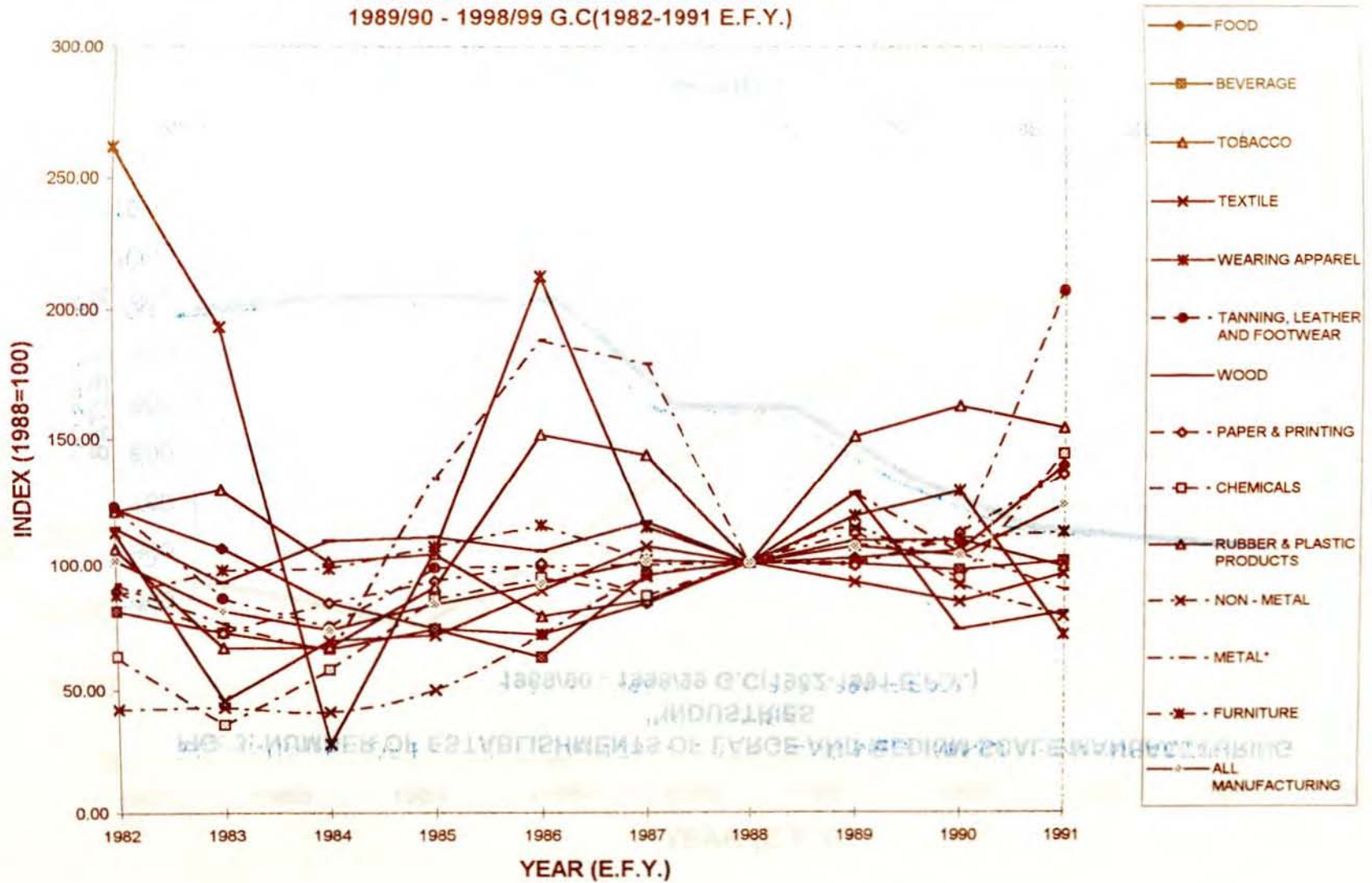
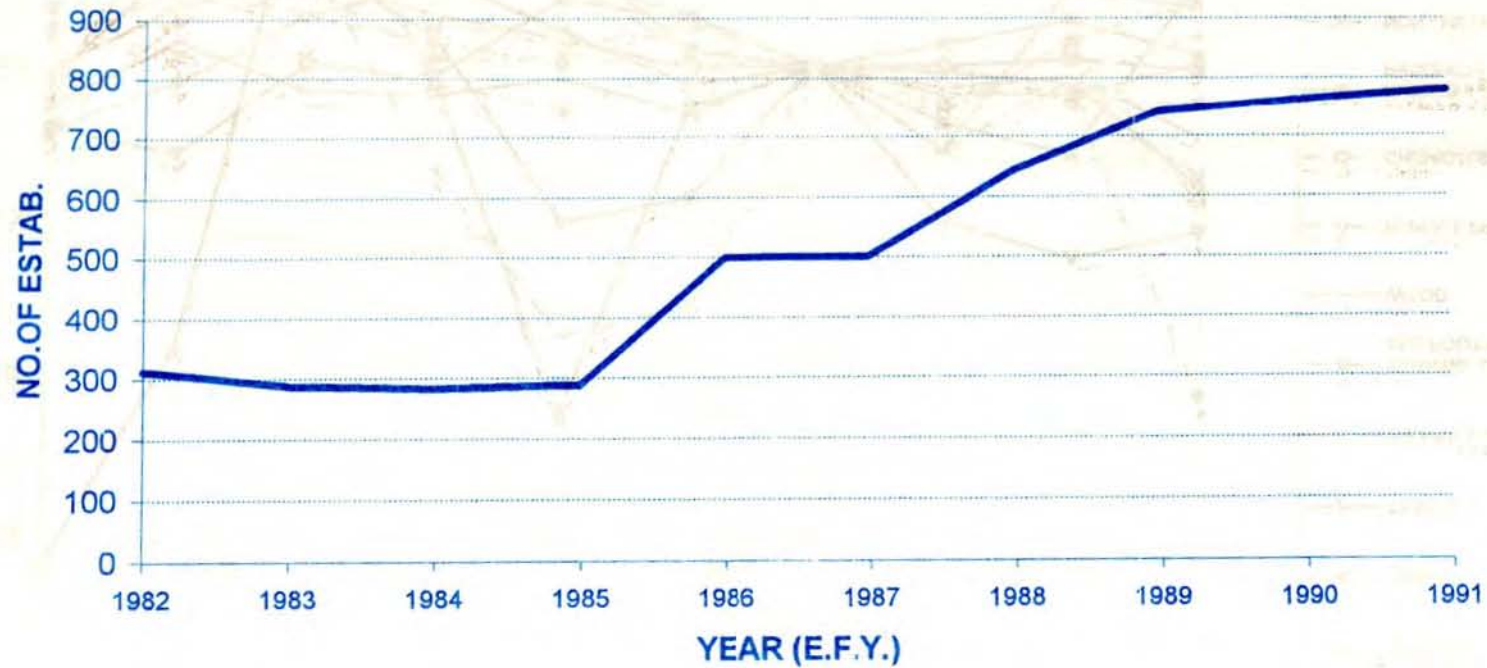


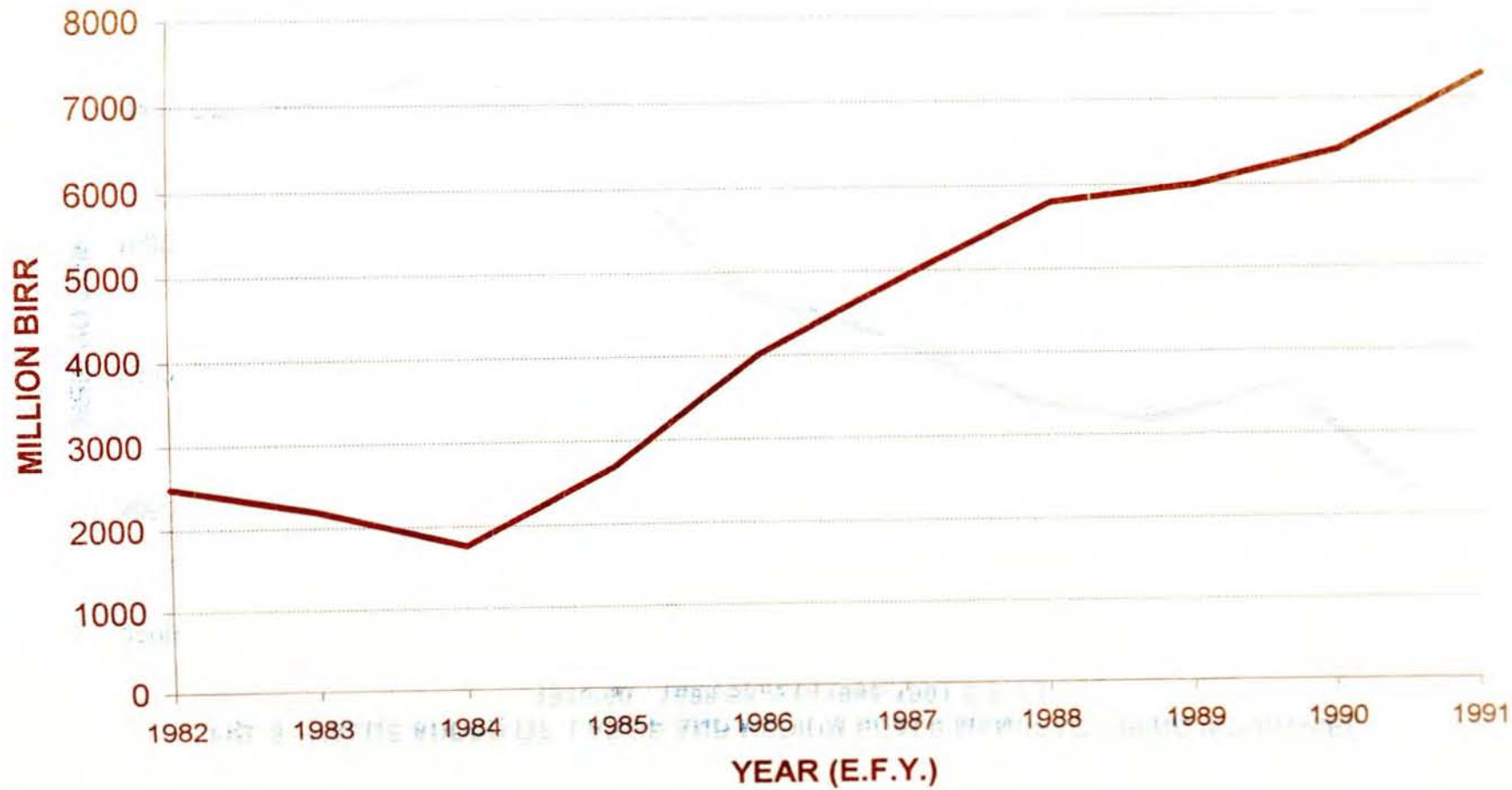
FIG. 2: ANNUAL INDICES OF LARGE AND MEDIUM SCALE MANUFACTURING INDUSTRIES  
 PRODUCTION BY INDUSTRIAL GROUP  
 1989/90 - 1998/99 G.C(1982-1991 E.F.Y.)



**FIG. 3: NUMBER OF ESTABLISHMENTS OF LARGE AND MEDIUM SCALE MANUFACTURING INDUSTRIES  
1989/90 - 1998/99 G.C(1982-1991 E.F.Y.)**

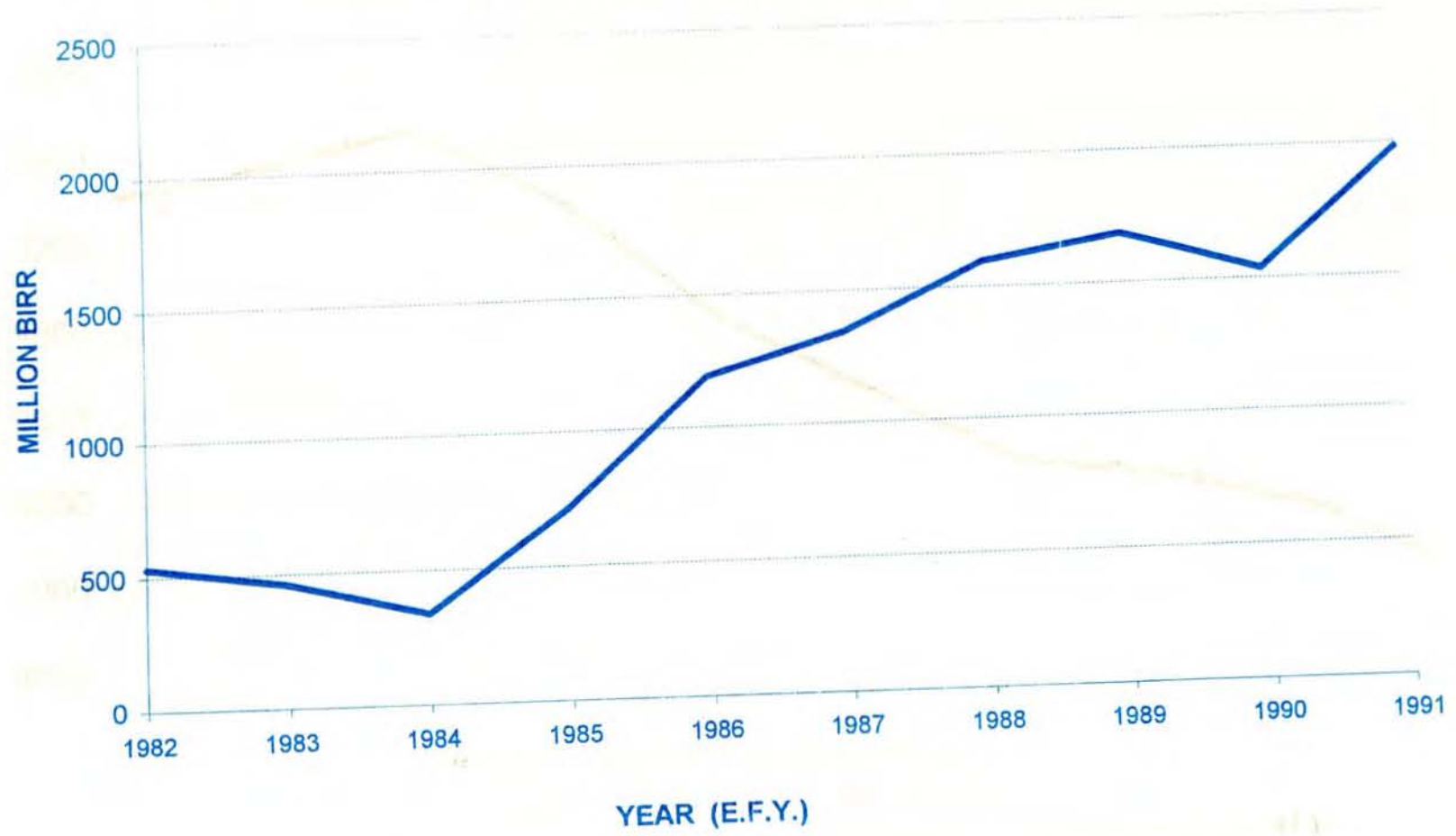


**FIG. 4 : GROSS VALUE OF PRODUCTION OF LARGE AND MEDIUM SCALE  
MANUFACTURING INDUSTRIES  
1989/90 - 1998/99 G.C(1982-1991 E.F.Y.)**



42

FIG. 5 : VALUE ADDED OF LARGE AND MEDIUM SCALE MANUFACTURING INDUSTRIES  
1989/90 - 1998/99 G.C(1982-1991 E.F.Y.)



PRINTED IN  
C.S.A.