

FEDERAL DEMOCRATIC REPUBLIC OF ETHIOPIA

CENTRAL STATISTICAL AGENCY

LARGE AND MEDIUM SCALE COMMERCIAL

FARMS SAMPLE SURVEY

2013/14 (2006EC)

RESULTS AT COUNTRY AND REGIONAL LEVEL

VOLUME VIII



STATISTICAL REPORT ON
AREA AND PRODUCTION OF CROPS, AND FARM
MANAGEMENT PRACTICES

ADDIS ABABA
AUGUST, 2014

2011107

C-5/5 ACC-004704

5.7

FEDERAL DEMOCRATIC REPUBLIC OF ETHIOPIA
CENTRAL STATISTICAL AGENCY

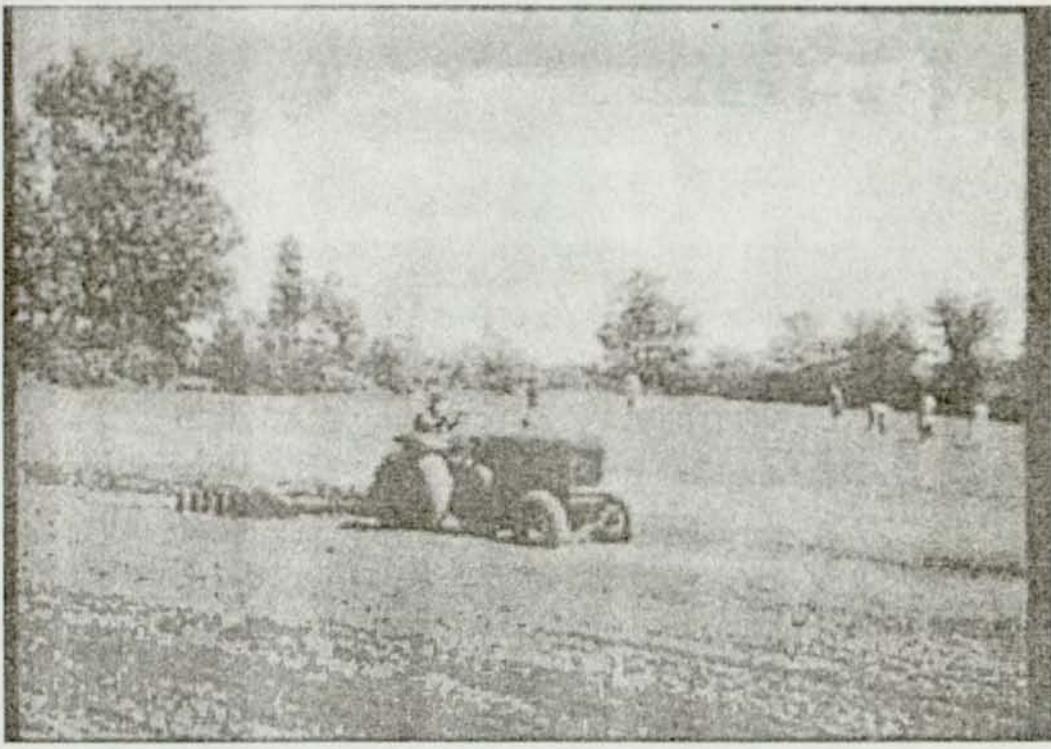
LARGE AND MEDIUM SCALE COMMERCIAL
FARMS SAMPLE SURVEY

2013/14 (2006EC)

RESULTS AT COUNTRY AND REGIONAL LEVEL

VOLUME VIII

Handwritten notes in purple ink, including 'Statistical Agency' and 'Ethiopia'.



STATISTICAL REPORT ON
AREA AND PRODUCTION OF CROPS, AND FARM MANAGEMENT PRACTICES

ADDIS ABABA
AUGUST, 2014

573

STATISTICAL BULLETIN

573

	<i>Page</i>
<i>TABLE OF CONTENTS</i>	<i>1</i>
<i>CHAPTER I</i>	<i>1</i>
1. <i>BACKGROUND</i>	<i>1</i>
2. <i>Objectives of the 2013/14 (2006 E.C.) Commercial farm Sample Survey</i>	<i>3</i>
<i>CHAPTER II SURVEY METHODOLOGY, OPERATION & DATA PROCSSING</i>	<i>4</i>
2. <i>Survey Methodology</i>	<i>4</i>
2.1 <i>Scope and Coverage</i>	<i>4</i>
2.2 <i>Sampling frame</i>	<i>4</i>
2.3 <i>Sample design</i>	<i>4</i>
3. <i>Organization Of Field Work</i>	<i>5</i>
3.1 <i>Training</i>	<i>6</i>
3.2 <i>Method of Enumeration</i>	<i>6</i>
4. <i>Data Processing</i>	<i>6</i>
4.1 <i>Editing coding & verification</i>	<i>6</i>
4.2 <i>Data entry, Cleaning and tabulation</i>	<i>7</i>
5. <i>Concepts and definitions</i>	<i>8</i>

CHAPTER III. SUMMARY OF THE 2013/14 COMMERCIAL FARMS SAMPLE SURVEY RESULTS

3.1 Introduction.....	11
3.2 Both seasons total cropped Area and production of Temporary crops	11
3.3 Cropland area and Production of Permanent Crops.....	15
3.4 Comparison of the current year (2013/14) Grain Crops yield with last Year (2012/13), estimates	18
3.5 Farm Management Practice	19
3.5.1 Introduction	19
3.5.2 Cropland Area under Different Agricultural Input and Farm Management Practices Statistical tables	19
Appendix I	53
Appendix II	57

CHAPTER ONE

BACKGROUND

Agriculture is the primary activity in Ethiopia, where about 84 percent of the country's population engaged in various agricultural activities and generates its income for household consumption to sustain its livelihood. Moreover, the country generates the lion share of its foreign currency earnings from the sales/export of agricultural commodities abroad and currently the sector contributes about 42 percent to the country's GDP, and above all, the sector is believed to be the main source of capital to be accumulated for the process of establishing the future industrialized Ethiopia, which again shows the determinant role played by the sector to bring about sustainable economic development for the country in the years to come.

Ethiopian agriculture have suffered for years from the use of traditional farm implements and subsistence farming system as well as limited use of modern farm inputs, that resulted to the sector's poor performance (i.e. low productivity of the sector). However, the surplus production along with productivity increments that have been registered during the last six consecutive years, indicated that the agricultural system as a whole and the crop production sub sector in particular is showing improvement in terms of productivity, the extent and use of modern farm inputs, and modern farming system practices, etc.

Despite those bottlenecks that hampered the sector's productivity, Ethiopian agriculture, as it had been used for centuries in the past and till the present, the sector is believed to continue being the leading and determinant sector of the country's future economic development.

As mentioned earlier, improvements that have been registered in the overall performance of the agricultural sector, during earlier consecutive years, cannot be considered as an end by itself but could be taken as an indicator for the need of much more efforts to be made by the government and the concerned stakeholders to adopt and implement the available modern and improved agricultural technologies that help attain enhanced productivity and maintain sustainable development of the sector. Thus, all efforts required to bring about the desired change/improvements on the overall performance of the agricultural sector as a whole, could

only be successful, if and only if policies, strategies, implementation plans and programs and related efforts are geared towards addressing the problems identified in the two agricultural sub-sectors. The two major agricultural sub sectors are:-

- a) **Private agricultural holding:** this sub-sector includes rural-urban small and fragmented privately owned agricultural holdings on which all types of agricultural activities such as crop production, livestock rearing...etc, are performed by the operator/holders to obtain agricultural produce for self/family consumption and sometimes for sell. However, over 95 % of the annual gross total agricultural output of the country is said to be generated from this sub-sector,
- b) **Commercial Farms:-** this sub-sector refers to the farms that include state and private commercial farms mainly established for the purpose of profit making by selling agricultural products at local market and/or abroad. These farms are commonly owned and operated by government, private companies and non-governmental institutions, such as private individual investors, share holders, religious and non-religious institutions...etc.

The sub-sector is mainly characterized by the use of relatively capital intensive, mechanized and market oriented farming system, with increased use of modern farm management practices and inputs such as, use of high tech-farm machineries and implements, irrigation scheme, use of chemical fertilizers, pesticides and improved seeds.

In Ethiopia, however, due to various reasons, commercial farms are not widely spread, and as a result of which the contribution of these farms to the country's gross total agricultural output is limited only to about 5 percent. According to some written documents, the introduction of Commercial farms in Ethiopia goes back to the Pre-Derg era, where government owned pilot state and research farms on the basis of Yugoslav model [MOSFD 1986-370], which pave the way for the establishment of private commercial, state and institutional farms in Awassa, Arbaminch, Zeway and Shewarobit which latter on transformed into well organized and relatively mechanized large and medium scale state, private and institutional farms that are collectively called 'Commercial Farms' .

Since then, large and medium scale commercial farms in Ethiopia had been forced to be reorganized by undertaking various structural and organizational adjustments with varying legal

status including ownership over a number of economic policy changes that took place over the last three decades. Nevertheless, a decade has passed since the existing Commercial farms reorganized on the basis of market oriented economic policy adopted by the existing Federal Democratic Republic Government of Ethiopia.

This report is the eighth of its type, where the first one was published in the 2002/03 (1995 E.C.), presenting the results of the 2001/02 (1994 E.C.) and the second one was published in the 2008/2009(2001 E.C). During the years between 2002/03 (1995 E.C.) and 2008/2009(2001 E.C) Central Statistical Agency had conducted more than Six surveys on Commercial farms but failed to produce the results due to various reasons mainly due to unwillingness of respondents to give accurate information. However, after making a through revisions and improvements on the previously adopted questionnaires, the reports on data collection methodology, related survey documents and results in the years 2009/10 (2002 E.C.) and 2010/11 (2003EC) were also released, CSA conducted Large and Medium Scale Commercial farms sample survey covering the whole country.

This report, therefore, presents quantitative information on total area, volume of production and yield of major crops (temporary and permanent), and total crop area under different farm management practices as obtained and summarized from the results of the 2013/14 (2006 E.C.) commercial farms sample survey of the Meher Season.

1.Objectives of the 2013/14 (2006 E.C.) Large and Medium Scale Commercial Farms Survey

The major objectives of the 2013/14 (2006 E.C.) commercial farms sample survey is to provide:-

- Statistical data on crop area and volume of production by farm and crop type to fill-in the existing data gap,
- Detail data on various inputs applied for large and medium scale agricultural production mainly quantity of Chemical fertilizers, pesticides, insecticide improved seeds & indigenous seed.

The provision of the above mentioned information are important for planning and policy formulation as well as for promoting the establishment of Commercial farms, and to design and formulate means and ways as how to facilitate the transformation of the existing small and fragmented private peasant agricultural holding to Commercial farms in the long run.

CHAPTER II

SURVEY METHODOLOGY, OPERATION AND DATA PROCESSING

1. Survey Methodology

2.1 Scope & Coverage

The 2013/14 large and medium scale commercial farms cover all urban & rural parts of the country. Considering the cost and manageability of field work a sample of 3179 farms were planned and decided to be covered at national level. But the survey succeeded to cover 2987 farms. This sample is allocated to each region based on number of farms each region has. The regional level distribution of the Farms is given in Table 1.

2.2 Sampling frame

The sampling frame which is list of commercial farms with their cropland area size and livestock number is collected from all part of the country through CSA Branch Statistical Offices. The collected farm list is compiled at the head office and the functional and non functional farms at the time of updating are identified. Farms which are selected directly and those selected by sample are identified based on this frame. Then the lists of commercial farms to be covered by the survey are distributed back to the Branch Offices for the actual survey.

2.3 Sample design

Two separate sample design is prepared for Commercial farms involved in crop production and livestock. Before the sample selection was done, the cut off point for the farms was decided. The same cut off point for farms involved in crop production and those involved in livestock was set. Farms having total area/number of livestock above the cutoff point are selected with certainty where as farms having area/ number of livestock below the cutoff point is sampled using probability proportional to size, size being the total area / number of livestock of the farms. For farms involved in livestock simple random sampling technique is used for selection.

The estimation procedure and measure of their precision are given in Appendix I

Table 1: Number of planed and covered farms

Region	Number of	
	Planned	Covered
Tigray	921	855
Afar	94	94
Amhara	781	711
Oromya	615	597
Somali	36	36
Benishangul-Gumuz	210	210
SNNPR	326	295
Gambella	87	87
Harari	5	5
Addis Ababa	74	67
Dire Dawa	30	30
Total	3179	2987

3. Organization of Field Work

Field organization is usually used as a means to link the data source with the central office to properly carry on the field data collection operations and for the strict control and supervision of the fieldwork.

Since the Commercial farms sample survey is part and parcel of the 2013/14 (2006 E.C) annual Agricultural Sample Survey, the field organization setup that has been used for the agricultural sample survey of private agricultural holdings was also used for the enumeration of Commercial farms. Moreover, as it has been planned earlier, the actual field data compilation operation for commercial farms was scheduled to be started at the time the field data collection operation that have been carried out for private agricultural holdings were almost due completion. The field worker who was assigned for Commercial farm enumeration was responsible to cover a minimum of 1 and a maximum of 5 farms depending on the number of sampled farms within the territory of the Branch Statistical Office the enumerator belongs to. Moreover, senior supervisors and statisticians who accomplish their assignment in the private peasant agricultural holdings enumeration were assigned as supervisors for quality control that includes spot check, re-interview, and check the consistence of information in the filled-in questionnaires...etc.

3.1 Training

Country experience indicates that it is essential to provide instruction manual and training for survey enumerators and supervisors in order to standardize procedures, secure common understanding of tasks to be performed and provide a reference guide during enumeration. Good data quality is assured when the training meets its objectives and the enumerators and supervisors show a sense of responsibilities and enthusiasm in the exercise of the survey operations.

However, due to their scattered location, and a number of technical and administrative reasons, the field data collection activities for commercial farms was planned to be carried out by senior supervisors. Accordingly, CSA organized a two stage training program that is a training of trainers and followed by training of supervisors. The first stage training was given at the CSA headquarter in Addis Ababa to the trainers consisting of professional staff from different departments at head office. The second stage training was wider in its scope, focusing on reviewing the details of the prepared survey documents and followed by discussions on the past survey experience that took place in 25 training centers located at CSA Branch Offices .

3.2 Method of enumeration

Commercial farms are expected to properly register and document each and every activity carried out in each and every plot of land mainly for administrative purpose. In line with this, the data collection of the year 2013/14(2006 E.C) Commercial farms sample survey was performed by interviewing the farm Owners/managers. The areas of these farms are directly measured by GPS except that of state owned farms whose areas are collected by interview.

4. Data processing

4.1 Editing, Coding and Verification

In the 2013/2014(2006 E.C) Commercial farms sample survey; the filled-in forms retrieved from the Branch Statistical Offices were primarily received and systematically registered at the documentation unit of the CSA head quarters in Addis Ababa. Before launching the actual editing and coding activities, the Agriculture, Natural Resources, and Environment Statistics Directorate staff gave adequate training to 15 editors and coders who latter on carried out the manual editing, coding and verification of the filled-in Commercial farms questionnaires. The

manual editing and coding activities of the filled-in forms were done region by region. To ensure the quality of the manual editing and coding work, verification of the completed questionnaires was carried out on 100% basis. For the total country, the editing, coding and verification of the filled-in forms for the commercial farms took 15 editors and about 14 working days.

4.2 Data Entry, Cleaning and Tabulation

About 15 data encoders were assigned to undertake the data entry activity of the 2013/14 filled-in and edited questionnaires of the large and medium scale farms. Before starting the actual data entry operation, data encoders were trained for about a half day using computer programs developed by the Data Processing Department staff. The Programmers prepared the data entry programs using CSPro.

The data entry exercise was carried out using 38 personal computers (PC's), and it was done region by region as in the case of the manual editing, coding and verification. In order to check the quality of the entered data, verification exercises were carried out. To this end verification activity, on 100% basis was carried out through the process of re-entering the data. For the total country, the whole data entry process of the filled-in forms on commercial farms took 38 entry clerks around 14 working days.

Data entered into the computer needs to be checked for completeness, consistency and validity. For this purpose, computer edit programs were prepared. Using printouts from these programs and referring to the original filled-in forms, corrections were made by trained manual data cleaning technicians. Moreover, other data-cleaning computer operators were involved in making the actual corrections of the data on the computer. Additionally, an intermediate set of instructions or programs were made available and applied on the data to prepare information suitable for tabulation. These programs were prepared using CSPro and IMPS software's. Like IMPS Software, CSPro is used as a tool for entering, editing and tabulating data. Data made ready for tabulation through the process of cleaning and intermediate programs was finally used to generate the required tables. This was done using tabulation programs developed by the senior programmers of the Data Processing Department.

5. Concepts and Definitions

Information on all items of agriculture is not useful until the items are distinctly defined and understood. The procedure of stating data items and related terms is a prerequisite for making standards and definitions for collection and compilation of agricultural data. The intent of using standard concepts and definitions is not only to provide quality data but also to ensure that the right items are enumerated and compiled accurately to reflect the agricultural situation. Standard concepts and definitions used in a survey setup provide clear linkages between various tables of the current and previous surveys and maintain consistent enumeration and measurement of variables of interest. To this end, the CSA has put a lot of efforts into communicating concepts and definitions to the survey field staff through training and instruction manuals.

The concepts and definitions used in the census were made to conform to the FAO standard with a slight adaptation of a few of them to suit the agricultural situation in Ethiopia. The concepts and definitions used in commercial farms sample survey includes:-

- **Commercial Farms**:- refers to certified (legally established) farms owned/operated by government, private investors, and/or share holders, which are profit oriented large and medium scale farms. These farms relatively use capital intensive, mechanized and market oriented farming system, as well as modern farm management practices and inputs such as irrigation scheme, fertilizers, pesticides . . . etc, to attain high productivity per unit of area.
- **Agriculture**:- The growing of crops and/or raising of livestock for own consumption and/or sale.
- **Crop**:- Includes Cereals, Pulses, Oilseeds, Vegetables, Root Crops, Fruits, Coffee, Inset, Chat, Hops, Sugar cane, Cotton, Tobacco ... etc produced for food, making drinks, stimulation and making fabrics or clothing.
- **Crop Production**:- The processes of growing and harvesting of the above crops for own consumption and/or sale.
- **Temporary Crops/Annual**:- Annual temporary crops are crops which are grown in less than a year's time, sometimes only a few months with an objective to sow or replant again for additional production following the current harvest. Continuously grown crops planted in rotation are also considered as temporary crops since each is harvested and destroyed by ploughing in preparation for each successive crop.

- **Permanent Crops**:- crops which are grown and occupy land for a long period of time, not requiring replanting for several years after each harvest, are considered as permanent crops. All fruit trees (i.e. Oranges, Mandarin, Banana ...etc) and trees for beverages (i.e. Coffee, Tea, Hops...etc.) are considered permanent crops but meadows and pastures are excluded.
- **Meher (main) Season Crop**:- any crop harvested between Meskerem (September) and Yekatit (February) is considered as Meher season crop.
- **Belg Season Crop**:- any crop harvested during the months of March (Megabit) and August (Nehase) is considered to be Belg season crops.
- **Improved Seed**:- is defined as crop variety which gives significantly higher yield, better quality and/or better benefit compared to traditional varieties of seeds and usually produced by the Ethiopian Seed Enterprise (ESE) in Ethiopia.
- **Fertilizer**:- Refers to organic and/or inorganic nutrients to the soil intended to increase the amount of plant nutrients available for crop growth. Usually, fertilizers are divided into two parts, natural and industrial. Examples of natural fertilizers are farmyard manure, wood ashes, etc, while industrial fertilizers are DAP (Di- Ammonium phosphate), UREA (Ammonium Nitrate), etc.
- **Pesticides**: - **Pesticides** are chemicals useful for mitigation, control or elimination of pests which are troublesome or harmful to crops. Insecticides, herbicides and fungicides are all considered as pesticides.

CHAPTER III

SUMMARY OF THE 2013/14(2006 E.C) LARGE AND MEDIUM SCALE COMMERCIAL FARMS SAMPLE SURVEY RESULTS

3.1 Introduction

The type of crops on which data were collected during the 2013/14 (2006 E.C.) commercial farms sample survey are those food crops that are used for domestic consumption and for export as well as those crops used as raw material for domestic agro-industries. Based on their biological classifications these crops are categorized into three major groups i.e. grains (which include cereals, pulses and oil crops), vegetables and root crops from the category of temporary crops and three major groups i.e. Fruit crops, Cash crops and industrial crops from the category of permanent crops. In this chapter of the report, discussions on major findings of the survey results on cropped area and production of temporary and permanent crops of Meher Season crops presented in Section 3.2. Likewise, major findings on Farm Management Practices for Temporary and Permanent crops for Meher Season is presented in section 3.5, as obtained and summarized from the results of the 2013/14 (2006 E.C.) Large and Medium Scale Commercial Farms Sample Survey.

3.2 Meher Season' Total Cropland Area and Production of Temporary Crops

a) Grain Crops

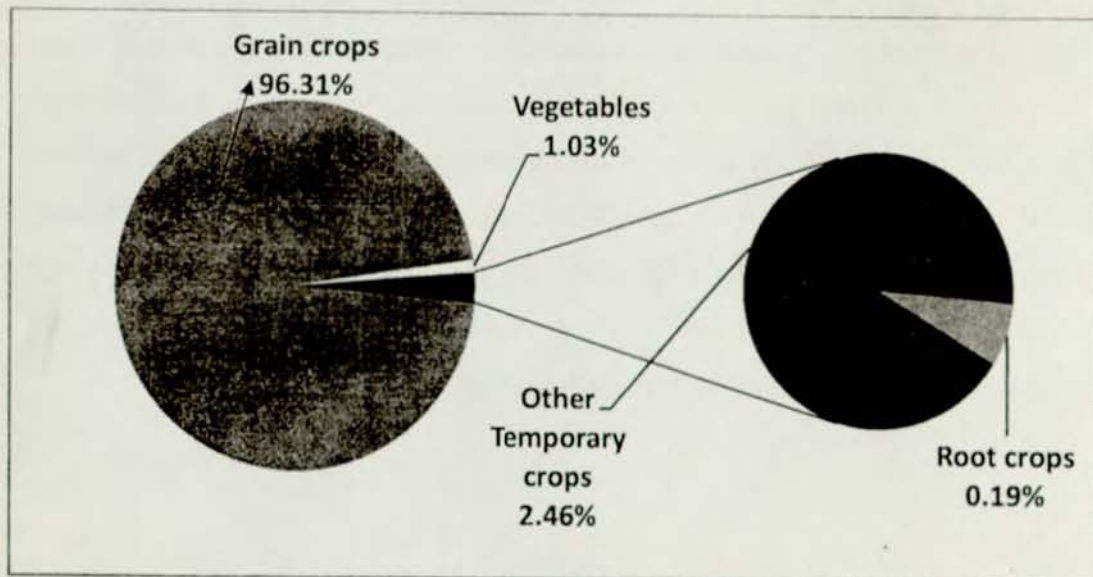
Grain crops refer to the major crop categories that included cereals, pulses and oilseeds, which constituted the major food crops for the majority of the country's population. Besides being staple food crops, the production of grain crops in Ethiopia serves as a source of foreign currency earning that will be used as an input for all efforts being made to bring about sustainable economic growth in the country. In Ethiopia, therefore, the production of grain crops is the most widely spread crop production activity both in terms of the extent of cropped land area and volume of production when compared with crops such as vegetable and root crops.

Summary Table 1. Estimates of Total Cropland Area by Major Crop Category of Meher Season for Commercial Farms: Country Level, 2013/14 (2006 E.C.)

Crop Type	Area in hectare	Percentage
Grain crops	602,313.70	96.31
Vegetables	6,468.85	1.03
Root crops	1,219.26	0.19
Other Temporary crops	15,386.83	2.46
All temporary crops	625,388.64	100

According to the results of the 2013/14(2006 E.C) Large and Medium Scale Commercial Farms sample survey, the total area covered by grain crops was found to be **602,313.70** hectares (**96.31%** of the total country level temporary crops covered land area), from which a total of **11,919,952.76** quintals of production, (**86.45 %** of the total country level production of temporary crops) was obtained during 2013/14(2006 EC) Meher season harvest. The results of this survey indicates that, both the cultivated land area and volume of production of grain crops obtained from crop production activity carried out during the 2013/14 Meher Season, contributed the lion share.

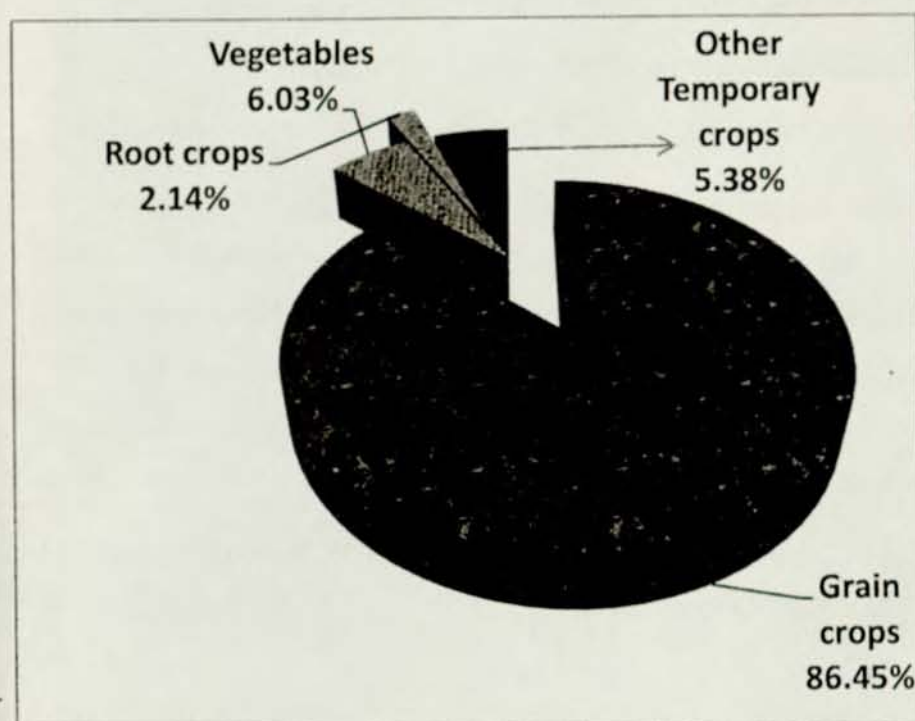
Fig 1. Percentage distribution of total crop land area by major crop category for meher season for commercial farms at country level 2013/14 (2006e.c



Summary Table 2. Estimates of Total Production Harvested by Major Crop Category and Meher Season for Commercial Farms: Country Level, 2013/14 (2006 E.C.)

Types of crops	Production in	
	quintals	percent
Grain crops	11,919,952.76	86.45
Vegetables	830,826.07	6.02
Root crops	295,101.68	2.14
Other Temporary crops	741,678.63	5.37
All temporary crops	13,787,559.14	100

Fig 2. Percentage Distribution Of Total Production By Major Crop Category For Meher Season For Commercial Farms At Country Level 2013/14 (2006 E.C)



Moreover, as it has been mentioned earlier, cereals which are classified within the grain crops category, are also produced in greater volume compared to the other crops by commercial farms because they are the principal staple crops and export commodities. As a matter of fact, cereals are grown in almost all the survey covered commercial farms with notable variation in the extent of area planted and the volume of production obtained across farms. This variation is seemingly caused by a shift in choice of crops, difference in weather conditions and speculated market demand. As indicated in the Appendix Table 2, cereals covered a total of 273826.08 hectares of land area, from which a production of 8788400.99 quintals was obtained during 2013/14 Meher

Season harvest. Similarly, pulses and oilseeds within the grain crops category are rich in their nutrient content and being used as essential part of the dietary requirement for

most Ethiopians. Above all pulses and oil crops form a significant commodity group of export that brings a considerable amount of foreign currency earnings for the country. For the reasons mentioned above and a number of others, pulses and oil crops are grown widely by commercial farms in Ethiopia. Nevertheless, the extent of crop land area and volume of pulses and oil crops production in commercial farms show variation from one farm to another for the same reasons mentioned for cereals above. According to the results of the 2013/14 commercial farms sample survey, pulses and oil crops covered a total land area of **45728.69** and **282758.93** Hectares, from which a total production of **838,828.63** and **2,292,723.14** Quintals was obtained during the 2013/14 Meher seasons harvest, respectively (For details see Table 2 in Appendix).

b, Vegetables

Vegetables are crops that are rich in vitamins necessary for the healthy growth of humans. Moreover, due to their high nutritional value vegetables do have ever rising demand both in local and foreign markets, and are classified among those export commodities' that generate considerable amount of foreign currency earnings to the country. As a matter of these facts commercial farms in Ethiopia used to grow vegetables over a considerable land area for years.

As indicated in Appendix Table 2, vegetables covered a total of **6,468.85** hectares of land from which a total volume of **830,826.07** Quintals were obtained in 2012/13 by Meher Season's harvest.

c, Root Crops

production of **295,101.68** quintals was obtained from Meher season's harvest (Tables 1 in Appendix). Like that of grain crops the contribution of root crops such as potatoes and sweet potatoes for human consumption as food crops cannot be over emphasized. The majority of the population in Southern and South Western Ethiopia mainly depends on root crops for their daily food consumption. In addition to serving as food crop and staple food at the time of surplus and/or deficit production years, root crops yield industrial and pharmaceutical products. Moreover, it should be noted that root crops are also a good source of cash and foreign exchange.

As the survey result indicates, the total area under root crops was found to be 1,219.26 hectares, from which a total

3.3 Cropland Area and Production of Permanent Crops

Permanent crops are long-term crops, which do not have to be replanted for several years after each harvest. These include tree crops such as coffee, enset, chat, oranges, mangoes, bananas, papayas, avocados...etc. It doesn't include cotton. The trees that yield oranges; mangoes, papayas, apples and other are known as fruit trees. Permanent crops are a good source of cash both for the farms and the country for generating income and foreign exchange.

According to the survey result permanent crops covered a total land of 347,478.80 Hectares with a total production 65,853,882.93 of Quintals obtained from commercial farms during the year 2013/14 Meher season harvest. These area and production for permanent crops does not include the values of cotton. For simplicity of description of the statistical tables and comparison purposes permanent crops have been grouped into three categories. The categories are fruit crops, cash/stimulant crops, industrial and other permanent crops.

Summary Table 3. Estimates of total area harvested of Meher Season's permanent crops by major crop category for commercial farms:

National Level 2013/14 (2006 E.C)

Crop Type	Area in hectare	Percent
Fruit crops	7,007.34	3.16
Cash crops	116,961.96	52.71
Industrial crops	91,757.60	41.35
Other Permanent crops	6,172.66	2.78
All permanent crops	221,899.56	100.00

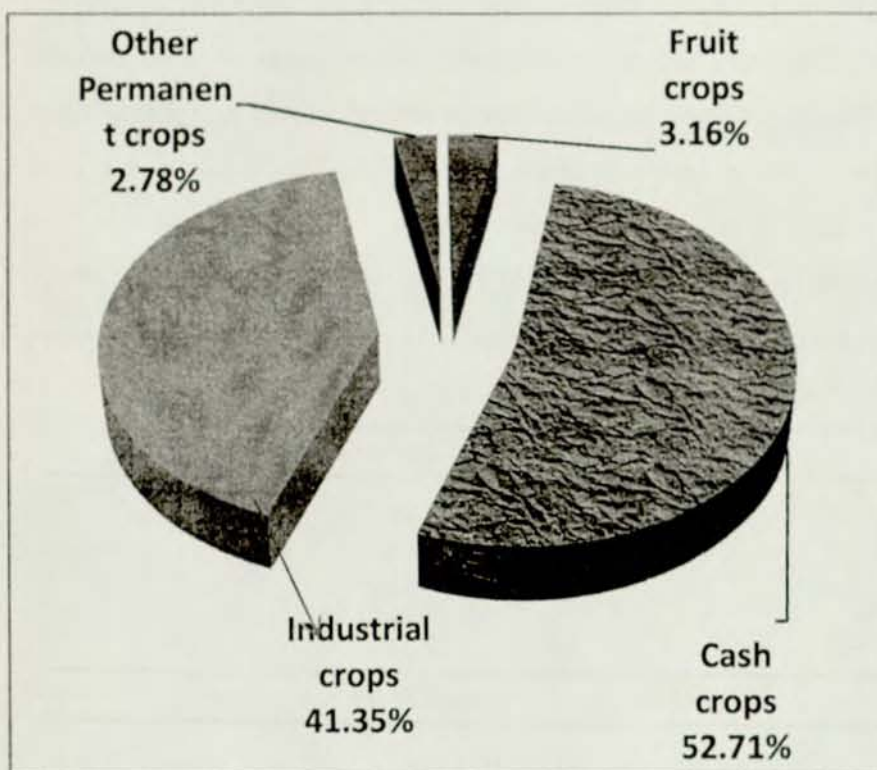
A Fruit Crops

Fruit production is relatively new to Ethiopian agricultural system, with commercial fruit production dating back to only about six decades. Therefore, most of the important fruits that are produced in commercial farms are recent introductions into the country. However, various kinds of fruit crops grow in different regions of the country yielding varying quantities of fruits within

commercial farms. Summary of total area harvested of Meher Season's permanent crops by major crop category for commercial farms is illustrated in Summary Table 3 and in Fig 3.

As indicated in Summary Table 3, fruit crops covered a total area of 7,007.34 Hectares (3.16 % of the total crop land area under permanent crops), with about 980,373.31 quintals of production (36.01% of the total permanent crops production), during the 2013/14 MeherSeason harvest. Oranges, Mangoes and Bananas took the highest area and production share of fruit crops (See Table 1 in Appendix).

Fig 3. Percentage Distribution Area Under Permanent And Industrial Crops For Meher Season For Commercial Farms At Country Level 2013/14)



B Cash/Stimulant crops

Cash/stimulant crops include crops such as tea, coffee and chat considered as easily marketable at local and foreign markets. Commercial farms engaged in growing stimulant crops such as coffee and tea uses larger area with the objective of obtaining larger volume of production so as to earn considerable amount of cash in local and/or foreign currency. As indicated in Table 3

cash/stimulant crops were grown on an estimated total land area of **116,961.96** hectares, with total production estimated at **1,331,309.20** quintals of production, contributing about **52.71%** and **48.90%** to the total cropland area and production of permanent crops, respectively (For details see Summary Table 3).

C Industrial Crops

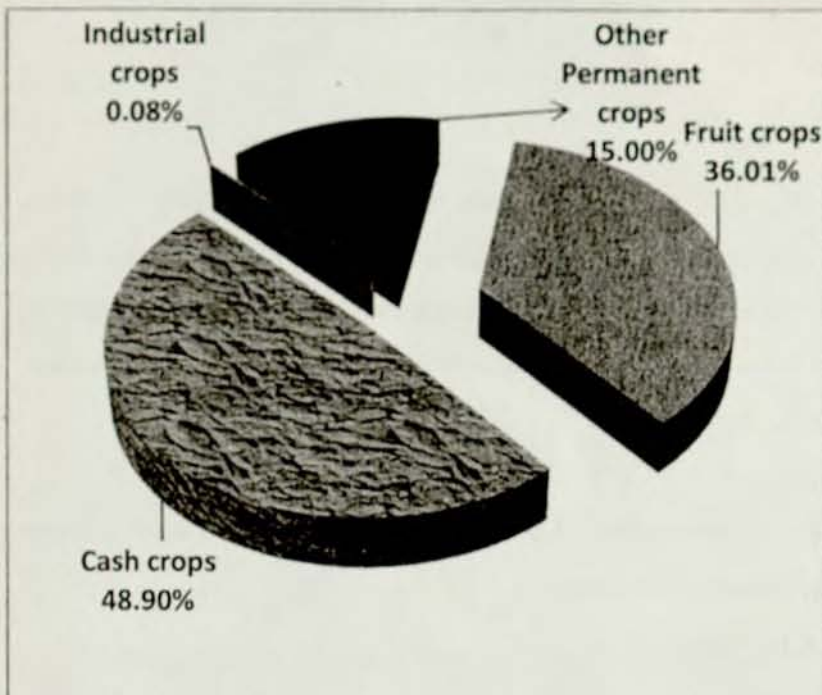
Industrial crops refer to crops commonly used as raw material for domestic agro-industries, which include crops such as **cotton** and **sugarcane**. Industrial crops grown in commercial farms covered a total land area of **91,757.60** hectares (**2.78 %** of the total area under permanent crops), with a total production of **2,253.79** Quintals (**0.08 %** of the total permanent crops production), during the 2013/14 Meher Season harvest.

Summary Table 4. Estimates of total production harvested of Meher Season's permanent crops by major crop category for commercial farms:

National Level 2013/14 (2006 E.C)

Crop s Type	Production Quintals	in Percent
Fruit crops	980,373.31	36.01
Cash crops	1,331,309.20	48.90
Industrial crops	2,253.79	0.08
Other Permanent crops	408,389.48	15.00
All permanent Crops	2,722,325.78	100.00

Fig 4. Percentage Distribution Production Under Permanent And Industrial Crops For Meher Season For Commercial Farms At Country Level 2013/14 (2006e.C)



3.4 Comparison of the current year (2013/14) Grain Crops yield with last Year (2012/13), estimates.

Table A of the report attempts to compare area covered and total production estimates of selected important food crops obtained from the 2013/14 (2006 E.C.) commercial farms Survey with last year i.e. 2012/13(2005 E.C.) Area and crop production estimates of the same crops.

Both the estimated cropped land area and the volume of grain crops production obtained have increased by about **4.35%** and **5.35 %** over last year 2012/13 estimate. However, with regard to estimated crop yield, crop such as, Finger millet within the category of cereals, crop such as Cheak peas ,fenu Greek within the category of pulses as well as crop such as Safflower, within the category of oil crops and Head cabbage from vegetables crops have shown a decrements that ranges from **8.19%** for Head cabage to **0.76%** for Chick peas in the current year estimated crop yield when compared with last year estimates. On the other hand maize, Teff, Barley, and wheat within the grain crops category have shown increment in the current year estimated yield which ranges from the smallest **3.41%** for Teff to the highest **26.9%** for Maize when compared with last year i.e,2012/13 estimates (See Table 1 on appendix).

3.5 Farm Management Practice

3.5.1 Introduction

The overall performance of a country's agriculture, usually affected by quite a number of factors, among which the level and extent of using modern agricultural practices (such as increased use of fertilizer, pesticides, and improved seeds...etc) is the first and the most important factor to be considered. This is merely because increased productivity can only be achieved through the use of the above mentioned farm inputs along with appropriate newly introduced modern farm management practices.

Towards this end, a number of modern techniques and technologies are available to help achieve enhanced crop productivity. The major actors behind achieving high level of productivity include among others, greater and efficient use of fertilizers, pesticides and improved seeds. Thus, during the year 2013/14 (2006 E.C) commercial farms sample survey, basic data on the agricultural inputs and practices were collected, summarized and the result are presented in this report.

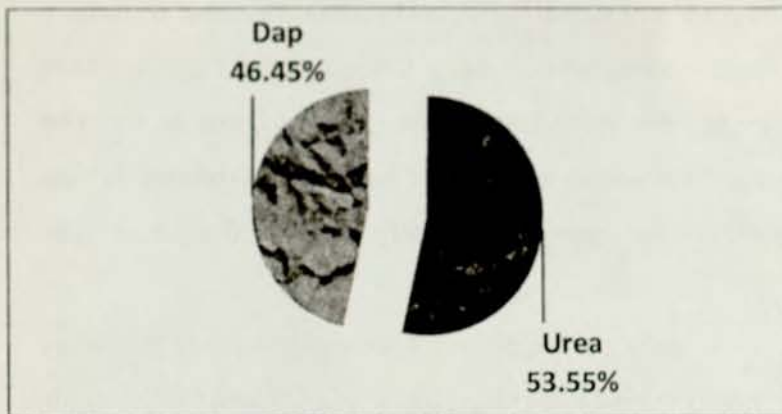
3.5.2 Cropland Area under Different Agricultural Input and Farm Management Practices

This section of the chapter deals with the agricultural input applied cropland area and quantity of inputs used by commercial farms.

a. Fertilized Cropland Areas and Quantity Applied

Fertilizing materials and mixture are not restricted to in organic chemical but include organic substances such as crop residues, animal dung ...etc. Therefore, fertilizers refer to organic and/or inorganic materials added to the soil with the intention of increasing the amount of plant nutrients available for crop growth. However, in 2013/14 (2006E.C) commercial farms sample survey; data was collected only on the application of chemical fertilizers. The chemical fertilizers that were covered by the survey consisted of DAP (DI-Ammonium phosphate, and UREA (Ammonium nitrate). The results of the survey indicates that at country level the total Urea and DAP applied cropland area was found to be **328,899.15** and **285,289.45** hectares, which accounted for **53.55%** and **46.45%** of the total cropland area reported for Commercial farms at country level, during the 2013/14 Meher Season harvest. (For details see Table 3 on Appendix)

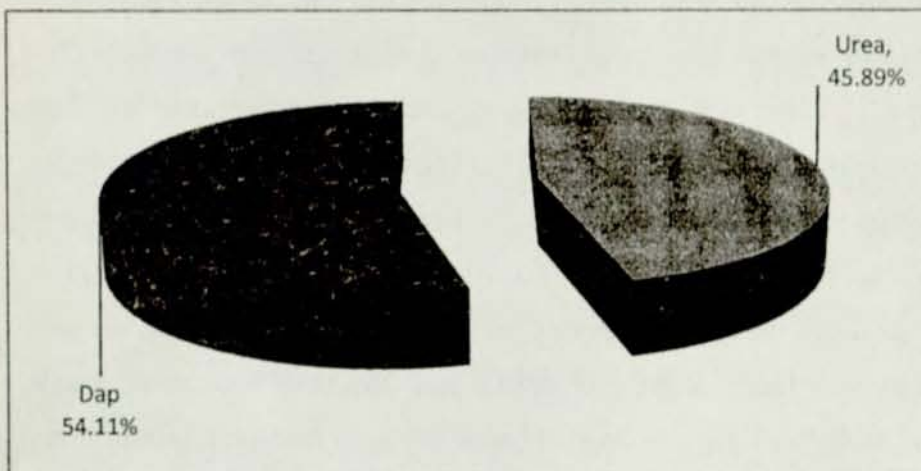
Fig 5. Percentage Distribution Of Chemical Fertilizers Applied Cropland Area By Type Of Fertilizer For Meher Season For Commercial Farms At Country Level 2013/14 (2006e.C)



b. Quantity of Chemical Fertilizer Applied

According to the results of the survey, the total quantity of chemical fertilizers applied during 2013/14 Meher Season for commercial farms was found to be **471,780.58** quintals. Out of which the share of DAP was **54.11 %** while the remaining **45.89 %** share was found to be the contribution of UREA. (For details see Table 3 on appendix and Figure 6).

Fig 6. Percentage Distribution Of Total Amount Of Chemical Fertilizers Applied By Type Of Fertilizer For Meher Season For Commercial Farms At Country Level 2013/14

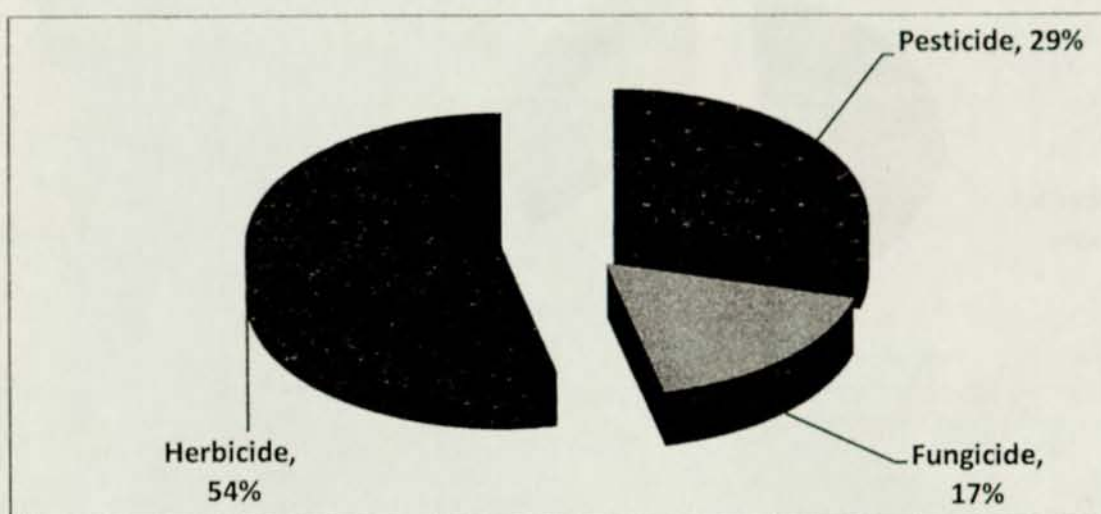


C. Cropland Areas Treated with Chemicals.

Pesticides, fungicide and herbicides are chemicals that are commonly used for the control of mitigation of elimination of pests that are detrimental to crops growth and productivity

As indicated in statistical For details see Table 3 on appendix, the total cropland area treated with pesticides, fungicides and herbicides in commercial farms was found to be **186,804.75** Hectares, **109,382.63** Hectares and **341,500.33** hectares of cropland area, respectively. (For details see Table 3 on appendix and Figure 7).

Fig 7. Percentage Distribution Of Chemicals Treated Cropland Area By Type Of Chemicals Used For Meher Season For Commercial Farms At Country Level 2013/14 (2006e.C)



d. Quantity of Chemicals used

The total quantity of chemicals used during 2013/14 for commercial farms was found to be 32,774.07 Quintals during Meher Season, out of which the share of pesticides and herbicides was 24.30% and 63.00 % respectively. While the remaining 12.70%, share was found to be the contribution of fungicides (For details see Table 3 on appendix and Figure 8).

8. Percentage Distribution Of Total Amount Of Chemicals Applied By Type Of Chemicals Applied For Meher Seasons For Commercial Farms At Country Level 2013/2014(2006c.C)

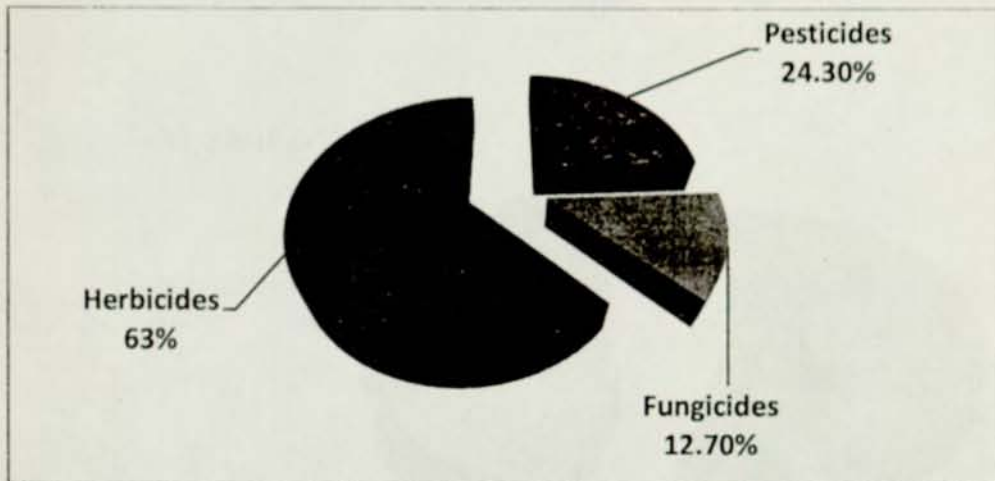


Table 1: Estimates of Cropland Area and Production For Commercial Farms, 2013/14(2006 E.C)and 2012/13(2005 E.C.), Meher (Main) Season Country

Crop Types	Cropland area in Hectare			Production in Quintals			Crop Productivity/ Yield (QTS/Ha)		
	2006 E.C	2005 E.C	% Change	2006 E.C	2005 E.C	% Change	2006 E.C	2005 E.C	% Change
Total	972,867.44	932,312.56	4.35	79,641,442.07	75,620,987.08	5.32			
Grain crops	602,313.70	569,825.62	5.7	11,919,952.76	9,956,773.88	19.72			
Cereals	273,826.08	256,228.96	6.87	8,788,400.99	6,986,372.36	25.79			
Teff	6,032.22	5,202.74	15.94	87,904.03	73,315.20	18.9	14.57	14.09	3.41
Barley	714.99	845.23	-15.41	15,947.51	20,655.64	-3.43	27.9	24.44	14.16
Wheat	80,744.08	80,345.78	0.5	2,578,690.95	2,064,750.66	24.89	31.94	25.7	24.28
Maize	84,570.03	84,566.21	0	1,451,381.63	2,719,563.66	26.91	40.81	32.16	25.9
Sorghum	97,572.31	81,728.34	19.39	2,559,994.20	2,033,731.77	25.88	26.24	24.88	5.47
Finger millet	353.79	300.66	17.67	5,844.83	5,062.80	15.45	16.52	16.84	-1.9
Oats / 'Aja'	397.48	396.73	*	740.38	-	*	1.86	-	*
Rice	3,441.18	2,843.27	21.03	83,897.46	69,292.63	21.08	24.38	24.37	0.04
Pulse	45,728.69	47,430.63	-3.59	838,828.63	848,948.19	-1.19			
Horse / Faba beans	435.2	479.18	-9.22	8,291.33	8,366.18	-0.89	19.05	17.45	9.17
Field Peas	239.06	214.16	11.63	5,198.19	3,250.71	59.91	21.74	15.18	43.21
Haricot beans	10,674.31	11,494.52	-7.14	193,483.48	196,939.50	-1.75	18.13	17.13	5.84
Chick peas	8,282.14	8,501.39	-2.58	130,320.58	134,812.61	-3.33	15.74	15.86	-0.76
Lentils	43.4	44.12	-1.63	681.6	684.62	-0.44	15.71	15.52	1.22
Velch / Grass peas	22.56	46.72	*	602.24	955.81	*	26.7	20.46	*
Soya beans	25,446.03	26,046.72	-2.31	492,865.38	496,106.62	-0.65	19.37	19.05	1.68
Fenugreek	586	603.55	-2.91	7,385.82	7,831.23	-5.69	12.6	12.98	-2.93
Gibfo	-	0.08	-	-	0.9	-	-	11.25	-
Oilseeds	282,758.93	266,166.03	6.23	2,292,723.14	2,121,453.33	8.07			
Niger seed/neugl	1,044.76	1,001.04	4.37	9,569.55	7,030.22	36.12	9.16	7.02	30.48
Linseed	478.65	599.76	-20.19	7,422.91	8,651.89	-14.2	15.51	14.43	7.48
Groundnuts	1,419.10	1,469.71	-3.44	23,616.76	23,851.24	-0.98	16.64	16.23	2.53
Safflower	27.19	41.94	-35.17	426.66	689.87	-38.15	15.69	16.45	-4.62
Sesame	276,701.42	259,367.70	6.68	2,197,326.33	2,024,506.64	8.54	7.94	7.81	1.66
Rape seed	3,087.82	3,685.88	-16.23	54,360.94	56,723.46	-4.16	17.6	15.39	14.36
Vegetables	6,468.85	5,905.55	9.54	830,826.07	727,125.20	14.26			
Lettuce	212.02	207.27	2.29	63,711.78	55,806.90	14.16	300.5	269.25	11.61
Head cabbage	206.93	153.17	35.1	49,540.73	39,941.45	24.03	239.41	260.77	-8.19
Ethiopian cabbage	25.96	24.2	7.27	3,801.22	2,067.16	83.89	146.43	85.42	71.42
Tomatoes	1,471.96	1,259.33	16.88	479,219.66	442,413.39	8.32	325.61	351.31	-7.32
Green peppers	149.48	117.48	27.24	29,810.78	19,609.04	52.03	199.43	166.91	19.48
Red peppers	4,368.45	4,111.55	6.25	203,664.21	166,236.45	22.51	46.62	40.43	15.31
Swiss chard	34.05	32.55	*	1,077.71	1,050.81	*	31.65	32.28	*
Root crops	1,219.26	1,066.30	14.34	295,101.68	270,269.80	9.19			
Beetroot	2.67	1.96	*	283.82	396.69	*	106.3	202.39	*
Carrot	45.13	45.67	*	2,725.37	2,268.91	*	60.39	49.68	*
Onion	856.88	770.53	11.21	189,604.59	185,739.84	2.08	221.27	214.05	-8.21
Potatoes	172.54	95.18	81.28	36,552.48	20,404.91	79.14	211.85	214.38	-1.18
Garlic	35.34	53.84	-34.36	5,328.46	6,363.63	-16.27	150.78	118.2	27.56
Taro 'Goders'	0.38	0.56	*	15	153.91	*	39.47	274.84	*
Sweet potatoes	106.33	98.55	7.89	60,591.97	54,941.91	10.28	569.85	557.5	-2.17
Other Temporary crops	15,386.83	12,516.17	22.94	741,678.63	233,652.72	217.43			
Permanent crops	347,478.80	342,998.92	1.31	65,853,882.93	64,433,165.48	2.2			
Fruit crops	7,007.34	6,511.75	7.61	980,373.31	855,282.52	14.63			
Avocado	152.5	122.84	24.15	12,594.76	10,219.39	23.24	82.59	83.19	-0.72
Bananas	1,895.50	1,888.74	0.36	177,521.75	177,215.74	0.17	93.65	93.83	-0.19
Gustia	29.11	20.25	43.75	1,207.88	711.48	69.77	41.49	35.13	18.1
Lemons	30.89	27.28	13.23	2,099.21	1,438.16	45.96	67.96	52.72	28.91
Mangoes	1,786.32	1,471.96	21.36	145,042.18	127,746.95	13.54	81.2	86.79	-6.44
Oranges	2,405.80	2,367.07	1.64	325,172.74	259,068.76	25.52	135.16	109.45	23.49
Papayas	702.44	608.83	15.38	316,673.39	278,820.69	13.58	450.82	457.96	1.58
Pineapples	4.79	4.79	*	61.4	61.35	*	12.82	12.81	*
Cash crops	334,298.80	334,333.91	-0.01	64,465,120.14	63,404,347.49	1.67			
Chat	287.38	333.07	-13.72	6,600.67	7,061.93	-6.53	22.97	21.2	8.35
Coffee	112,316.69	114,542.91	-1.94	825,172.15	897,387.65	-8.05	7.35	7.83	-6.13
Tea	4,355.90	4,238.08	2.78	499,396.38	371,597.38	34.39	114.65	87.68	30.76
Hops / 'Gesho'	1.99	17.08	*	140	73.6	*	70.35	4.31	*
Enset	-	-	*	-	-	*	-	-	*
Sugar cane	49,639.15	49,582.19	0.11	59,812,931.18	59,235,478.35	0.97	1,204.95	1,194.69	0.86
Cotton	167,697.69	165,620.57	1.25	3,320,879.75	2,892,798.57	14.8	19.8	17.47	13.34
Other Permanent crops	6,172.66	2,153.26	186.67	408,389.48	173,535.47	135.33	66.16	80.59	

Table 2: Estimate of Cropland Area and Production of Commercial Farms, 2006 E.C (2013/14), Mehar Main

National						
Crop Type	Area Hectares	%	Production Quintals	%	Q7/9A	
Total	972,867.44	100	79,641,442.07	100		
Grains	602,313.70	61.91	11,919,952.76	14.97		
Cereals	273,826.08	28.15	8,788,400.99	11.03		
Teff	6,032.22	0.62	87,904.03	0.11	14.57	
Barley	714.99	0.07	13,947.51	0.02	27.9	
Wheat	80,744.08	8.3	2,578,690.95	3.24	31.94	
Maize	84,570.03	8.69	3,451,381.63	4.33	40.81	
Sorghum	97,572.31	10.03	2,555,994.20	3.21	25.24	
Finger millet	353.79	0.04	5,844.83	0.01	16.32	
Oats/Aja'	397.48	0.04	740.38	-	1.86	
Rice	3,441.18	0.35	83,897.46	0.11	24.38	
Pulse	45,728.69	4.7	838,828.63	1.05		
Horse/Veal beans	435.2	0.04	8,291.33	0.01	19.05	
Field peas	239.06	0.02	5,198.19	0.01	21.74	
Haricot beans	10,674.31	1.1	193,483.48	0.24	18.13	
Chick peas	8,282.14	0.85	130,320.58	0.16	15.74	
Lentils	43.4	-	681.6	-	15.71	
Vetch/Grass peas	22.56	-	602.24	-	26.7	
Soya beans	25,446.03	2.62	492,865.38	0.62	19.37	
Fenugreek	586	0.06	7,385.82	0.01	12.6	
Gibto	-	-	-	-	-	
Oil seeds	282,758.93	29.06	2,292,723.14	2.88		
Niug	1,044.76	0.11	9,569.55	0.01	9.16	
Linseed	478.65	0.05	7,422.91	0.01	15.51	
Ground nuts	1,419.10	0.15	23,616.76	0.03	16.64	
Safflower	27.19	-	425.66	-	15.69	
Sesame	276,701.42	28.44	2,197,326.33	2.76	7.94	
Rapeseed	3,087.82	0.32	54,360.94	0.07	17.6	
Vegetables	6,468.85	0.66	830,826.07	1.04		
Lettuce	212.02	0.02	63,711.78	0.08	300.5	
Head Cabbage	206.93	0.02	49,540.73	0.06	239.41	
Ethiopian Cabbage	25.96	-	3,801.22	-	146.43	
Tomatoes	1,471.96	0.15	479,219.66	0.6	325.57	
Green peppers	149.48	0.02	29,810.78	0.04	199.43	
Red papers	4,368.45	0.45	203,664.21	0.26	46.62	
Swiss chard	34.05	-	1,077.71	-	31.65	
Root crops	1,219.26	0.13	295,101.68	0.37		
Beet root	2.67	-	283.82	-	106.3	
Carrot	45.13	-	2,725.37	-	60.39	
Onion	856.88	0.09	189,604.59	0.24	221.27	
Potatoes	172.54	0.02	36,552.48	0.05	211.85	
Garlic	35.34	-	5,328.46	0.01	150.78	
Taro/Godere'	0.38	-	15	-	39.47	
Sweet potatoes	106.33	0.01	60,591.97	0.08	569.85	
Other Temporary	15,386.83	1.58	741,678.63	0.93		
Permanent crops	347,478.80	35.72	65,853,882.93	82.69		
Fruit crops	7,007.34	0.72	980,373.31	1.23		
Avocado	152.5	0.02	12,594.76	0.02	82.59	
Bananas	1,895.50	0.19	177,521.75	0.22	93.65	
Guava/Zeytun'	29.11	-	1,207.88	-	41.49	
Lemons	30.89	-	2,099.21	-	67.96	
Mangos	1,786.32	0.18	145,042.18	0.18	81.2	
Oranges	2,405.80	0.25	325,172.74	0.41	135.16	
Papayas	702.44	0.07	316,673.39	0.4	450.82	
Pineapples	4.79	-	61.4	-	12.82	
Cash crops	334,298.80	34.36	64,465,120.14	80.94		
Chat	287.38	0.03	6,600.67	0.01	22.97	
Coffee	112,316.69	11.54	825,172.15	1.04	7.35	
Tee	4,355.90	0.45	499,396.38	0.63	114.65	
Hopet/Gesha'	1.99	-	140	-	70.35	
Enset	-	-	-	-	-	
Sugar cane	49,639.15	5.1	59,812,931.18	75.1	1,204.95	
Cotton	167,697.69	17.24	3,320,879.75	4.17	19.8	
Other permanent crops	6,172.66	0.63	408,389.48	0.51	66.16	

Table 2.1: Estimate of Cropland Area and Production of Commercial Farms, 2006 E.C (2013/14) , Meher Main season

Tigray Region

Crop Type	Area in Hectares	%	Production Quintals	%	Yield QT/HA
Total	199,436.20	100	2,449,790.66	100	
Grains	188,202.35	94.37	2,261,672.92	92.32	
Cereals	43,775.63	21.95	1,081,693.01	44.16	
Teff	241.05	0.12	3,718.73	0.15	15.43
Barley	-	-	-	-	-
Wheat	54.05	0.03	1,211.46	0.05	22.41
Maize	93.87	0.05	3,236.88	0.13	34.48
Sorghum	43,383.84	21.75	1,073,513.25	43.82	24.74
Finger millet	1.41	-	9.87	-	7
Oats/'Aja'	-	-	-	-	-
Rice	1.41	-	2.82	-	2
Pulse	112.57	0.06	1,445.30	0.06	
Horse/Faba beans	-	-	-	-	-
Field peas	24.6	0.01	417.49	0.02	16.97
Haricot beans	43.64	0.02	261	0.01	5.98
Chick peas	44.33	0.02	766.81	0.03	17.3
Lentiles	-	-	-	-	-
Vetch/Grass peas	-	-	-	-	-
Soya beans	-	-	-	-	-
Fenugreek	-	-	-	-	-
Gibto	-	-	-	-	-
Oil seeds	144,314.15	72.36	1,178,534.61	48.11	
Nueg	-	-	-	-	-
Linseed	-	-	-	-	-
Ground nuts	-	-	-	-	-
Safflower	-	-	-	-	-
Sesame	144,314.15	72.36	1,178,534.61	48.11	8.17
Rapeseed	-	-	-	-	-
Vegetables	409.94	0.21	77,927.19	3.18	
Lettuce	1.43	-	1,036.35	0.04	724.72
Head Cabbage	7.34	-	2,605.56	0.11	354.98
Ethiopian Cabbage	-	-	-	-	-
Tomatoes	282.96	0.14	59,197.61	2.42	209.21
Green peppers	47	0.02	12,328.63	0.5	262.31
Red papers	71.21	0.04	2,759.04	0.11	38.75
Swiss chard	-	-	-	-	-
Root crops	254.81	0.13	37,480.04	1.53	
Beet root	-	-	-	-	-
Carrot	-	-	-	-	-
Onion	212.83	0.11	29,394.47	1.2	138.11
Potatoes	39.3	0.02	7,621.06	0.31	193.92
Garlic	-	-	-	-	-
Taro/'Godere'	-	-	-	-	-
Sweet potatoes	2.67	-	464.52	0.02	173.98
Other Temporary	3.15	-	3,081.69	0.13	
Permanent crops	10,565.95	5.3	69,568.82	2.84	
Fruit crops	4.52	-	698.04	0.03	
Avocado	-	-	-	-	-
Bananas	1.27	-	100.29	-	78.57
Guava/'Zeytun'	-	-	-	-	-
Lemons	-	-	-	-	-
Mangos	-	-	-	-	-
Oranges	-	-	-	-	-
Papayas	3.25	-	597.75	0.02	183.92
Pineapples	-	-	-	-	-
Cash crops	10,536.25	5.28	61,664.78	2.52	
Chat	-	-	-	-	-
Coffee	-	-	-	-	-
Tea	-	-	-	-	-
Hopes/'Gesho'	-	-	-	-	-
Enset	-	-	-	-	-
Sugar cane	-	-	-	-	-
Cotton	10,536.25	5.28	61,664.78	2.52	5.85
Other permanent crops	25.18	0.01	7,206.00	0.29	286.18

Table 2.2: Estimate of Cropland Area and Production of Commercial Farms, 2006 E.C (2013/14), Meher Main season of Afar Region

Crop Type	Area in Hectares	%	Production in Quintals	%	Yield Q2/HA
Total	70,651.29	100	1,756,953.25	100	
Grains	1,549.76	2.19	43,824.83	2.49	
Cereals	1,033.14	1.46	38,129.05	2.17	
Teff	-	-	-	-	-
Barley	-	-	-	-	-
Wheat	-	-	-	-	-
Maize	982.94	1.39	37,495.26	2.13	38.15
Sorghum	50.2	0.07	633.79	0.04	12.63
Finger millet	-	-	-	-	-
Oats/Aja'	-	-	-	-	-
Rice	-	-	-	-	-
Pulse	154	0.22	2,736.51	0.16	
Horse/Faba beans	-	-	-	-	-
Field peas	-	-	-	-	-
Haricot beans	144	0.2	2,470.51	0.14	17.16
Chick peas	10	0.01	266	0.02	26.6
Lentils	-	-	-	-	-
Vetch/Grass peas	-	-	-	-	-
Soya beans	-	-	-	-	-
Fenugreek	-	-	-	-	-
Gilto	-	-	-	-	-
Oil seeds	362.62	0.51	2,959.27	0.17	
Nuug	-	-	-	-	-
Linseed	-	-	-	-	-
Ground nuts	-	-	-	-	-
Safflower	-	-	-	-	-
Sesame	362.62	0.51	2,959.27	0.17	8.16
Rapeseed	-	-	-	-	-
Vegetables	0.51	-	292.18	0.02	
Lettuce	-	-	-	-	-
Head Cabbage	-	-	-	-	-
Ethiopian Cabbage	-	-	-	-	-
Tomatoes	0.51	-	292.18	0.02	572.9
Green peppers	-	-	-	-	-
Red papers	-	-	-	-	-
Swiss chard	-	-	-	-	-
Root crops	28.84	0.04	5,260.13	0.3	
Beet root	-	-	-	-	-
Carrot	-	-	-	-	-
Onion	28.84	0.04	5,260.13	0.3	182.39
Potatoes	-	-	-	-	-
Garlic	-	-	-	-	-
Taro/Godere'	-	-	-	-	-
Sweet potatoes	-	-	-	-	-
Other Temporary	2	-	5	-	-
Permanent crops	69,070.18	97.76	1,707,571.11	97.19	
Fruit crops	101.06	0.14	8,271.86	0.47	
Avocado	-	-	-	-	-
Bananas	11	0.02	1,057.03	0.06	96.09
Guava/Zeytun'	1	-	82.46	-	82.46
Lemons	-	-	-	-	-
Mangos	43.04	0.06	2,820.60	0.16	65.53
Oranges	46.02	0.07	4,311.78	0.25	93.69
Papayas	-	-	-	-	-
Pineapples	-	-	-	-	-
Cash crops	68,925.70	97.56	1,698,517.63	96.67	
Chat	-	-	-	-	-
Coffee	-	-	-	-	-
Tea	-	-	-	-	-
Hopes/Gesho'	-	-	-	-	-
Enset	-	-	-	-	-
Sugar cane	9,145.00	12.94	128,195.20	7.3	14.02
Cotton	59,780.70	84.61	1,570,322.43	89.38	26.27
Other permanent crops	43.42	0.06	781.62	0.04	18

Table 2.3: Estimate of Cropland Area and Production of Commercial Farms, 2006 E.C (2013/14), Meher Main season

Amhara Region

Crop Type	Area in Hectares	%	Production Quintals	%	Yield QT/HA
Total	183,996.29	100	2,899,808.61	100	
Grains	169,085.59	91.9	2,501,770.08	86.27	
Cereals	50,896.98	27.66	1,507,468.49	51.99	
Teff	1,333.98	0.73	19,540.91	0.67	14.65
Barley	-	-	-	-	-
Wheat	2,775.87	1.51	52,741.80	1.82	19
Maize	14,110.37	7.67	693,495.38	23.92	49.15
Sorghum	32,279.25	17.54	730,506.25	25.19	22.63
Finger millet	68.54	0.04	1,180.74	0.04	17.23
Oats/Aja'	1.17	-	8.38	-	7.16
Rice	327.79	0.18	9,995.02	0.34	30.49
Pulse	14,191.50	7.71	246,262.76	8.49	
Horse/Faba beans	8.44	-	64.03	-	7.59
Field peas	-	-	-	-	-
Haricot beans	2,226.42	1.21	55,214.41	1.9	24.8
Chick peas	4,670.98	2.54	81,284.10	2.8	17.4
Lentiles	2.6	-	2.1	-	0.81
Vetch/Grass peas	-	-	-	-	-
Soya beans	7,283.05	3.96	109,698.13	3.78	15.06
Fenugreek	-	-	-	-	-
Gibto	-	-	-	-	-
Oil seeds	103,997.11	56.52	748,038.83	25.8	
Nueg	128.65	0.07	1,173.57	0.04	9.12
Linseed	-	-	-	-	-
Ground nuts	85	0.05	1,813.32	0.06	21.33
Safflower	24.74	0.01	422.3	0.01	17.07
Sesame	103,758.73	56.39	744,629.65	25.68	7.18
Rapeseed	-	-	-	-	-
Vegetables	1,301.50	0.71	130,509.58	4.5	
Lettuce	-	-	-	-	-
Head Cabbage	94.22	0.05	10,012.92	0.35	106.27
Ethiopian Cabbage	-	-	-	-	-
Tomatoes	79.11	0.04	19,063.20	0.66	240.97
Green peppers	10.35	0.01	1,041.99	0.04	100.68
Red papers	1,116.27	0.61	100,370.52	3.46	89.92
Swiss chard	1.55	-	20.95	-	13.52
Root crops	88.03	0.05	19,514.37	0.67	
Beet root	1.3	-	25.71	-	19.78
Carrot	0.63	-	33.17	-	52.65
Onion	86.1	0.05	19,455.49	0.67	225.96
Potatoes	-	-	-	-	-
Garlic	-	-	-	-	-
Taro/'Godere'/	-	-	-	-	-
Sweet potatoes	-	-	-	-	-
Other Temporary	135.52	0.07	482.77	0.02	
Permanent crops	13,385.65	7.27	247,531.81	8.54	
Fruit crops	677.55	0.37	80,045.53	2.76	
Avocado	4.61	-	230.49	0.01	50
Bananas	93.23	0.05	10,228.36	0.35	109.71
Guava/'Zeytun'/	0.44	-	15.4	-	35
Lemons	-	-	-	-	-
Mangos	383.83	0.21	24,855.18	0.86	64.76
Oranges	118.95	0.06	16,844.70	0.58	141.61
Papayas	76.48	0.04	27,871.40	0.96	364.43
Pineapples	-	-	-	-	-
Cash crops	12,634.45	6.87	154,239.25	5.32	
Chat	259.14	0.14	5,836.13	0.2	22.52
Coffee	324.97	0.18	3,224.96	0.11	9.92
Tea	74.8	0.04	394.64	0.01	5.28
Hopes/'Gesho'/	-	-	-	-	-
Enset	-	-	-	-	-
Sugar cane	13.8	0.01	16,917.94	0.58	1,225.94
Cotton	11,961.74	6.5	127,865.59	4.41	10.69
Other permanent crops	73.65	0.04	13,247.03	0.46	179.86

Table 2.4 : Estimate of Cropland Area and Production of Commercial Farms, 2006 E.C (2013/14), Meher Main season

Oromia Region

Crop Type	Area in Hectares	%	Production in Quintals	%	Yield QT/HA
Total	260,149.53	100	66,276,865.21	100	
Grains	147,196.03	56.58	4,317,011.66	6.51	
Cereals	122,911.12	47.25	3,972,096.88	5.99	
Teff	1,601.21	0.62	28,333.46	0.04	17.7
Barley	652.88	0.25	18,781.77	0.03	28.77
Wheat	75,640.36	29.08	2,406,713.64	3.63	31.82
Maize	36,194.90	13.91	1,188,930.49	1.79	32.85
Sorghum	8,038.21	3.09	319,039.46	0.48	39.69
Finger millet	246.59	0.09	4,353.23	0.01	17.65
Oats/Aja'	395.16	0.15	720	-	1.82
Rice	141.82	0.05	5,224.85	0.01	36.84
Pulse	11,206.84	4.31	202,042.61	0.3	
Horse/Faba beans	426.75	0.16	8,227.30	0.01	19.28
Field peas	138.07	0.05	1,910.70	-	13.84
Haricot beans	2,692.94	1.04	48,791.79	0.07	18.12
Chick peas	427.84	0.16	8,094.21	0.01	18.92
Lentils	40.8	0.02	679.5	-	16.65
Vetch/Grass peas	-	-	-	-	-
Soya beans	6,894.45	2.65	126,953.29	0.19	18.41
Fenugreek	586	0.23	7,385.82	0.01	12.6
Gibto	-	-	-	-	-
Oil seeds	13,078.07	5.03	142,872.17	0.22	
Nuez	485.1	0.19	5,353.13	0.01	11.04
Linseed	192.09	0.07	4,233.55	0.01	22.04
Ground nuts	675.15	0.26	9,699.77	0.01	14.37
Safflower	2.45	-	4.36	-	1.78
Sesame	8,635.47	3.32	69,220.44	0.1	8.02
Rapeseed	3,087.82	1.19	54,360.94	0.08	17.6
Vegetables	3,331.52	1.28	548,382.23	0.83	
Lettuce	210.43	0.08	62,674.21	0.09	297.84
Head Cabbage	97.16	0.04	35,022.45	0.05	360.46
Ethiopian Cabbage	5.92	-	1,847.22	-	312.03
Tomatoes	1,038.58	0.4	388,660.19	0.59	374.22
Green peppers	84.26	0.03	14,201.93	0.02	168.55
Red papers	1,890.88	0.73	45,769.77	0.07	24.21
Swiss chard	4.28	-	206.48	-	48.24
Root crops	479.34	0.18	120,702.90	0.18	
Beet root	1.37	-	258.11	-	188.4
Carrot	2.61	-	470.65	-	180.33
Onion	392.04	0.15	104,517.11	0.16	266.6
Potatoes	45.66	0.02	10,038.58	0.02	219.86
Garlic	35.34	0.01	5,328.46	0.01	150.78
Taro/Godere'	0.38	-	15	-	39.47
Sweet potatoes	1.95	-	75	-	38.46
Other Temporary	13,176.27	5.06	106,944.01	0.16	
Permanent crops	95,966.37	36.89	61,183,824.41	92.32	
Fruit crops	3,546.40	1.36	639,854.80	0.97	
Avocado	16.79	0.01	1,198.22	-	71.37
Bananas	23.25	0.01	1,966.36	-	84.57
Guava/Zeytun'	24	0.01	981.45	-	40.89
Lemons	22.16	0.01	1,375.73	-	62.08
Mangos	1,245.69	0.48	106,786.96	0.16	85.73
Oranges	1,621.55	0.62	245,199.65	0.37	151.21
Papayas	588.17	0.23	282,285.05	0.43	479.94
Pineapples	4.79	-	61.4	-	12.82
Cash crops	88,650.33	34.08	60,241,656.17	90.89	
Chat	0.24	-	8.79	-	36.63
Coffee	45,495.70	17.49	384,530.02	0.58	8.45
Tea	1,413.50	0.54	186,618.66	0.28	132.03
Hopes/Gesho'	1.99	-	140	-	70.35
Enset	-	-	-	-	-
Sugar cane	40,457.79	15.55	59,648,319.52	90	1,474.33
Cotton	1,281.12	0.49	22,039.19	0.03	17.2
Other permanent crops	3,769.64	1.45	302,313.44	0.46	80.2

Table 2.5 : Estimate of Cropland Area and Production of Commercial Farms, 2006 E.C (2013/14) , Meher Main season
Somale Region

Crop Type	Area in Hectares	%	Production in Quintals	%	Yield QT/HA
Total	1,276.99	100	85,295.90	100	
Grains	559.57	43.82	16,198.99	18.14	
Cereals	505.55	39.59	15,491.37	17.35	
Teff	-	-	-	-	-
Barley	38.35	3	471.92	0.53	12.31
Wheat	355.97	27.88	10,494.32	11.75	29.48
Maize	71.85	5.63	3,199.26	3.58	44.53
Sorghum	39.38	3.08	1,325.87	1.48	33.67
Finger millet	-	-	-	-	-
Oats/'Aja'	-	-	-	-	-
Rice	-	-	-	-	-
Pulse	52.06	4.08	664.62	0.74	
Horse/Faba beans	-	-	-	-	-
Field peas	-	-	-	-	-
Haricot beans	36	2.82	501.57	0.56	13.99
Chick peas	16.06	1.26	161.05	0.18	10.03
Lentilles	-	-	-	-	-
Vetch/Grass peas	-	-	-	-	-
Soya beans	-	-	-	-	-
Fenugreek	-	-	-	-	-
Gibto	-	-	-	-	-
Oil seeds	1.96	0.15	43	0.05	
Nuug	-	-	-	-	-
Linseed	-	-	-	-	-
Ground nuts	-	-	-	-	-
Safflower	-	-	-	-	-
Sesame	1.96	0.15	43	0.05	21.94
Rapeseed	-	-	-	-	-
Vegetables	22.57	1.77	2,729.31	3.06	
Lettuce	0.16	0.01	1.22	-	7.63
Head Cabbage	0.5	0.04	10	0.01	20
Ethiopian Cabbage	-	-	-	-	-
Tomatoes	21.83	1.71	2,710.00	3.03	124.14
Green peppers	-	-	-	-	-
Red papers	-	-	-	-	-
Swiss chard	0.08	0.01	8.1	0.01	101.25
Root crops	27.09	2.12	6,120.56	6.85	
Beet root	-	-	-	-	-
Carrot	-	-	-	-	-
Onion	27.09	2.12	6,120.56	6.85	225.93
Potatoes	-	-	-	-	-
Garlic	-	-	-	-	-
Taro/'Godere'	-	-	-	-	-
Sweet potatoes	-	-	-	-	-
Other Temporary	0.4	0.03	10.73	0.01	
Permanent crops	667.36	52.26	64,236.31	71.94	
Fruit crops	659.57	51.65	63,135.90	70.7	
Avocado	-	-	-	-	-
Bananas	2.5	0.2	178.56	0.2	71.42
Guava/'Zeytun'	2.73	0.21	125.57	0.14	46
Lemons	8.33	0.65	462.27	0.52	55.49
Mangos	8.43	0.66	949.45	1.06	112.63
Oranges	609.47	47.73	57,043.83	63.88	93.6
Papayas	28.1	2.2	4,376.22	4.9	155.74
Pineapples	-	-	-	-	-
Cash crops	-	-	-	-	-
Chat	-	-	-	-	-
Coffee	-	-	-	-	-
Tea	-	-	-	-	-
Hopes/'Gesho'	-	-	-	-	-
Enset	-	-	-	-	-
Sugar cane	-	-	-	-	-
Cotton	-	-	-	-	-
Other permanent crops	7.79	0.61	1,100.41	1.23	141.26

Table 2.6 : Estimate of Cropland Area and Production of Commercial Farms, 2006 E.C (2013/14) , Meher Main season
Benishangul Gumuz Region

Crop Type	Area in Hectares	%	Production in Quintals	%	Yield QT/HA
Total	69,994.55	100	1,614,077.93	100	
Grains	51,779.54	73.98	1,228,850.89	76.13	
Cereals	19,741.07	28.2	745,468.05	46.19	
Teff	16.49	0.02	75.84	-	4.6
Barley	-	-	-	-	-
Wheat	95.8	0.14	1,661.48	0.1	17.36
Maize	6,692.90	9.56	326,584.08	20.23	48.8
Sorghum	12,248.33	17.5	400,998.58	24.84	32.74
Finger millet	6.88	0.01	99.54	0.01	14.47
Oats/Aja'	-	-	-	-	-
Rice	680.67	0.97	16,046.53	0.99	23.57
Pulse	13,051.46	18.65	281,033.78	17.41	
Horse/Faba beans	-	-	-	-	-
Field peas	4.02	0.01	32	-	7.96
Haricot beans	1,747.06	2.5	26,747.38	1.66	15.31
Chick peas	316.39	0.45	4,043.61	0.25	12.78
Lentiles	-	-	-	-	-
Vetch/Grass peas	-	-	-	-	-
Soya beans	10,983.99	15.69	250,210.74	15.5	22.78
Fenugreek	-	-	-	-	-
Gibto	-	-	-	-	-
Oil seeds	18,987.01	27.13	202,349.11	12.54	
Nueg	224.25	0.32	1,767.84	0.11	7.88
Linseed	0.4	-	1.06	-	2.65
Ground nuts	370.65	0.53	7,213.10	0.45	19.46
Safflower	-	-	-	-	-
Sesame	18,391.71	26.28	193,367.11	11.98	10.51
Rapeseed	-	-	-	-	-
Vegetables	511.31	0.73	12,948.68	0.8	
Lettuce	-	-	-	-	-
Head Cabbage	-	-	-	-	-
Ethiopian Cabbage	-	-	-	-	-
Tomatoes	-	-	-	-	-
Green peppers	-	-	-	-	-
Red papers	511.31	0.73	12,948.68	0.8	25.32
Swiss chard	-	-	-	-	-
Root crops	27.33	0.04	6,177.47	0.38	
Beet root	-	-	-	-	-
Carrot	-	-	-	-	-
Onion	27.33	0.04	6,177.47	0.38	226.03
Potatoes	-	-	-	-	-
Garlic	-	-	-	-	-
Taru/Godere'	-	-	-	-	-
Sweet potatoes	-	-	-	-	-
Other Temporary	2	-	20	-	-
Permanent crops	17,674.37	25.25	366,080.89	22.68	
Fruit crops	10.06	0.01	510	0.03	
Avocado	3.27	-	3	-	0.92
Bananas	0.52	-	1.5	-	2.88
Guava/Zeytun'	0.94	-	3	-	3.19
Lemons	-	-	-	-	-
Mangos	5.33	0.01	502.5	0.03	94.28
Oranges	-	-	-	-	-
Papayas	-	-	-	-	-
Pineapples	-	-	-	-	-
Cash crops	17,664.31	25.24	365,570.89	22.65	
Chat	-	-	-	-	-
Coffee	25	0.04	136	0.01	5.44
Tea	-	-	-	-	-
Hopes/Gesho'	-	-	-	-	-
Enset	-	-	-	-	-
Sugar cane	4.31	0.01	1,291.50	0.08	299.65
Cotton	17,635.01	25.19	364,143.39	22.56	20.65
Other permanent crops	-	-	-	-	-

Table 2.7 : Estimate of Cropland Area and Production of Commercial Farms, 2006 E.C (2013/14) , Meher Main season
S.N.N.P Region

Crop Type	Area in hectares	%	Production in Quintals	%	Yield QT/HA
Total	134,167.12	100	3,729,505.77	100	
Grains	41,676.89	31.06	1,495,704.71	40.1	
Cereals	33,509.99	24.98	1,384,125.60	37.11	
Teff	2,836.54	2.11	36,195.10	0.97	12.76
Barley	23.76	0.02	693.82	0.02	29.2
Wheat	1,767.39	1.32	104,350.61	2.8	59.04
Maize	26,024.49	19.4	1,181,184.78	31.67	45.39
Sorghum	1,433.43	1.07	31,277.43	0.84	21.82
Finger millet	30.03	0.02	198.9	0.01	6.62
Oats/Aja'	1.14	-	12	-	10.53
Rice	1,392.60	1.04	30,212.96	0.81	21.7
Pulse	6,720.23	5.01	100,706.20	2.7	
Horse/Faba beans	-	-	-	-	-
Field peas	72.37	0.05	2,838.00	0.08	39.22
Haricot beans	3,784.25	2.82	59,494.82	1.6	15.72
Chick peas	2,796.01	2.08	35,689.80	0.96	12.76
Lentils	-	-	-	-	-
Vetch/Grass peas	22.28	0.02	592.24	0.02	26.58
Soya beans	45.32	0.03	2,091.33	0.06	46.15
Fenugreek	-	-	-	-	-
Gibto	-	-	-	-	-
Oil seeds	1,447.27	1.08	10,872.91	0.29	
Nueg	206.76	0.15	1,275.02	0.03	6.17
Linseed	286.16	0.21	3,188.30	0.09	11.14
Ground nuts	45.9	0.03	820	0.02	17.86
Safflower	-	-	-	-	-
Sesame	908.45	0.68	5,589.58	0.15	6.15
Rapeseed	-	-	-	-	-
Vegetables	822.92	0.61	50,647.50	1.36	
Lettuce	-	-	-	-	-
Head Cabbage	7.58	0.01	1,887.81	0.05	249.05
Ethiopian Cabbage	20.04	0.01	1,954.00	0.05	97.5
Tomatoes	18.24	0.01	6,141.23	0.16	336.69
Green peppers	7.8	0.01	2,223.23	0.06	285.03
Red papers	741.28	0.55	37,604.64	1.01	50.73
Swiss chard	27.98	0.02	836.6	0.02	29.9
Root crops	313.83	0.23	99,846.21	2.68	
Beet root	-	-	-	-	-
Carrot	41.89	0.03	2,221.55	0.06	53.03
Onion	82.66	0.06	18,679.36	0.5	225.98
Potatoes	87.57	0.07	18,892.84	0.51	215.75
Garlic	-	-	-	-	-
Taro/Godere'	-	-	-	-	-
Sweet potatoes	101.71	0.08	60,052.45	1.61	590.43
Other Temporary	2,034.81	1.52	631,037.26	16.92	
Permanent crops	89,318.67	66.57	1,452,270.09	38.94	
Fruit crops	1,948.21	1.45	185,126.58	4.96	
Avocado	126.95	0.09	11,092.76	0.3	87.38
Bananas	1,760.81	1.31	163,877.28	4.39	93.07
Guava/Zeytun'	-	-	-	-	-
Lemons	-	-	-	-	-
Mangos	54.39	0.04	8,763.60	0.23	161.13
Oranges	-	-	-	-	-
Papayas	6.06	-	1,392.95	0.04	229.86
Pineapples	-	-	-	-	-
Cash crops	86,138.37	64.2	1,183,818.79	31.74	
Chat	28	0.02	755.75	0.02	26.99
Coffee	60,913.11	45.4	401,756.87	10.77	6.6
Tea	2,867.61	2.14	312,383.08	8.38	108.93
Hopes/Gesho'	-	-	-	-	-
Enset	-	-	-	-	-
Sugar cane	18.26	0.01	18,207.03	0.49	997.1
Cotton	22,311.38	16.63	450,716.05	12.09	20.2
Other permanent crops	1,232.09	0.92	83,324.72	2.23	67.63

Table 2.8 : Estimate of Cropland Area and Production of Commercial Farms, 2006 E.C (2013/14) , Meher Main season
Gambela Region

Crop Type	Area in Hectares	%	Production in Quintals	%	Yield QT/ha
Total	53,136.30	100	821,854.06	100	
Grains	2,231.80	4.2	54,069.98	6.58	
Cereals	1,421.85	2.68	43,104.84	5.24	
Teff	-	-	-	-	-
Barley	-	-	-	-	-
Wheat	26.25	0.05	731.94	0.09	27.88
Maize	398.71	0.75	17,255.50	2.1	43.28
Sorghum	99.66	0.19	2,699.56	0.33	27.09
Finger millet	0.34	-	2.55	-	7.5
Oats/Aja'	-	-	-	-	-
Rice	896.89	1.69	22,415.28	2.73	24.99
Pulse	239.22	0.45	3,911.90	0.48	
Horse/Faba beans	-	-	-	-	-
Field peas	-	-	-	-	-
Haricot beans	-	-	-	-	-
Chick peas	-	-	-	-	-
Lentilles	-	-	-	-	-
Vetch/Grass peas	-	-	-	-	-
Soya beans	239.22	0.45	3,911.90	0.48	16.35
Fenugreek	-	-	-	-	-
Gibto	-	-	-	-	-
Oil seeds	570.73	1.07	7,053.24	0.86	
Nueg	-	-	-	-	-
Linseed	-	-	-	-	-
Ground nuts	242.4	0.46	4,070.57	0.5	16.79
Safflower	-	-	-	-	-
Sesame	328.33	0.62	2,982.67	0.36	9.08
Rapeseed	-	-	-	-	-
Vegetables	68.11	0.13	7,363.82	0.9	
Lettuce	-	-	-	-	-
Head Cabbage	-	-	-	-	-
Ethiopian Cabbage	-	-	-	-	-
Tomatoes	30.61	0.06	3,152.26	0.38	102.98
Green peppers	-	-	-	-	-
Red papers	37.51	0.07	4,211.56	0.51	112.28
Swiss chard	-	-	-	-	-
Root crops	-	-	-	-	-
Beet root	-	-	-	-	-
Carrot	-	-	-	-	-
Onion	-	-	-	-	-
Potatoes	-	-	-	-	-
Garlic	-	-	-	-	-
Taro/Godere'	-	-	-	-	-
Sweet potatoes	-	-	-	-	-
Other Temporary	32.59	0.06	85.18	0.01	
Permanent crops	50,803.80	95.61	760,335.08	92.51	
Fruit crops	34.4	0.06	488.66	0.06	
Avocado	0.88	-	70.29	0.01	79.88
Bananas	2.92	0.01	112.37	0.01	38.48
Guava/Zeytun'	-	-	-	-	-
Lemons	-	-	-	-	-
Mangos	30.6	0.06	306	0.04	10
Oranges	-	-	-	-	-
Papayas	-	-	-	-	-
Pineapples	-	-	-	-	-
Cash crops	49,749.40	93.63	759,652.62	92.43	
Chat	-	-	-	-	-
Coffee	5,557.91	10.46	35,524.30	4.32	6.39
Tea	-	-	-	-	-
Hopes/Gesho'	-	-	-	-	-
Enset	-	-	-	-	-
Sugar cane	-	-	-	-	-
Cotton	44,191.49	83.17	724,128.32	88.11	16.39
Other permanent crops	1,020.00	1.92	193.8	0.02	0.19

Table 2.9 : Estimate of Cropland Area and Production of Commercial Farms, 2006 E.C (2013/14) , Meher Main season

Dire Dewa

Crop Type	Area in Hectares	%	Production in Quintals	%	Yield Q7/HA
Total	51.79	100	1,239.67	100	
Grains	25	48.27	743.7	22.96	
Cereals	25	48.27	743.7	22.96	
Teff	-	-	-	-	-
Barley	-	-	-	-	-
Wheat	25	48.27	743.7	22.96	29.75
Maize	-	-	-	-	-
Sorghum	-	-	-	-	-
Finger millet	-	-	-	-	-
Oats/Aja'	-	-	-	-	-
Rice	-	-	-	-	-
Pulse	-	-	-	-	-
Horse/Faba beans	-	-	-	-	-
Field peas	-	-	-	-	-
Haricot beans	-	-	-	-	-
Chick peas	-	-	-	-	-
Lentils	-	-	-	-	-
Vetch/Grass peas	-	-	-	-	-
Soya beans	-	-	-	-	-
Fenugreek	-	-	-	-	-
Gibto	-	-	-	-	-
Oil seeds	-	-	-	-	-
Nug	-	-	-	-	-
Linseed	-	-	-	-	-
Ground nuts	-	-	-	-	-
Safflower	-	-	-	-	-
Sesame	-	-	-	-	-
Rapeseed	-	-	-	-	-
Vegetables	0.25	0.48	21.58	0.67	
Lettuce	-	-	-	-	-
Head Cabbage	-	-	-	-	-
Ethiopian Cabbage	-	-	-	-	-
Tomatoes	0.12	0.23	3	0.09	25
Green peppers	0.07	0.14	15	0.46	214.29
Red papers	-	-	-	-	-
Swiss chard	0.06	0.12	3.58	0.11	59.67
Root crops	-	-	-	-	-
Beet root	-	-	-	-	-
Carrot	-	-	-	-	-
Onion	-	-	-	-	-
Potatoes	-	-	-	-	-
Garlic	-	-	-	-	-
Taro/Godere'	-	-	-	-	-
Sweet potatoes	-	-	-	-	-
Other Temporary	0.07	0.14	10	0.31	
Permanent crops	26.47	51.11	2,464.39	76.07	
Fruit crops	25.58	49.39	2,241.93	69.2	
Avocado	-	-	-	-	-
Bananas	-	-	-	-	-
Guava/Zeytun'	-	-	-	-	-
Lemons	0.4	0.77	261.21	8.06	653.03
Mangos	15	28.96	57.9	1.79	3.86
Oranges	9.81	18.94	1,772.79	54.72	180.71
Papayas	0.37	0.71	150.03	4.63	405.49
Pineapples	-	-	-	-	-
Cash crops	-	-	-	-	-
Chat	-	-	-	-	-
Coffee	-	-	-	-	-
Tea	-	-	-	-	-
Hopes/Gesho'	-	-	-	-	-
Enset	-	-	-	-	-
Sugar cane	-	-	-	-	-
Cotton	-	-	-	-	-
Other permanent crops	0.89	1.72	222.46	6.87	249.96

Table 3: Estimate of farm input applied cropland area and quantity of input used by crop and input types for commercial farms, 2006 E.C (2013/14)

Country

Type of crop	Chemical Fertilizer Applied				Seed Type			
	UREA		DAP		Improved Seed		Indigenous Seed	
	Area in Ha	Amount in Qts	Area in Ha	Amount in Qts	Area in Ha	Amount in Qts	Area in Ha	Amount in Qts
Total	328,899.15	216,480.68	285,289.45	255,299.90	120,678.13	113,798.47	414,044.22	88,629.21
Grains	256,351.17	120,223.53	234,615.68	189,084.37	113,109.13	102,805.83	365,871.61	74,946.59
Cereals	169,101.05	96,612.31	136,739.29	131,285.00	97,379.16	94,427.44	122,907.19	49,564.13
Teff	5,062.52	3,999.37	6,914.87	6,450.56	6,077.31	3,403.31	3,989.43	1,806.28
Barley	725.31	462.81	1,275.17	1,347.43	802.47	1,029.66	344.24	478.41
Wheat	83,156.64	21,196.96	44,693.98	42,913.21	33,108.03	63,549.89	16,011.47	33,331.82
Maize	51,424.74	61,641.21	52,787.60	60,558.74	54,908.62	25,236.56	9,776.92	1,038.99
Sorghum	27,534.90	8,079.80	29,882.73	19,045.67	1,369.68	383.2	90,744.74	9,382.09
Finger millet	218.74	478.96	263.37	300.02	233.06	213.59	304.61	107.75
Oats/Aja'	41.73	22.5	55.23	58.5	-	-	55.23	117
Rice	936.48	750.7	866.35	610.88	879.99	611.24	1,660.56	1,301.80
Pulse	2,263.14	1,440.56	7,331.05	5,491.66	8,974.27	7,965.55	15,628.74	12,491.61
Horse/faba beans	9	4.5	854.12	842.5	986.86	1,677.65	50.37	49.99
Field peas	70.25	124.6	70.25	143.52	55.25	227.04	-	-
Haricot beans	510.08	614.01	2,744.21	1,733.25	3,083.87	1,992.13	2,372.87	1,867.74
Chick peas	402.14	324.98	1,169.94	1,019.60	1,861.83	1,992.11	3,196.55	3,065.67
Lentils	-	-	3	1	-	-	10.36	4.57
Vetch/Grass peas	65.96	19.4	65.96	19.4	-	-	66.21	39.05
Soya beans	762.72	348.65	2,423.57	1,732.40	2,543.47	2,072.62	9,894.88	7,460.60
Fenugreek	443	4.43	-	-	443	4	3	3
Gibto	-	-	-	-	-	-	35	1
Oil seeds	84,986.98	22,150.66	90,545.34	52,307.71	6,755.70	412.84	227,335.68	12,890.85
Nueg	87.15	1,204.40	139.65	1,230.65	386.32	19.94	850.43	179.24
Linseed	75.7	33.92	274.7	190.88	199.4	78.52	91.2	66.37
Ground nuts	-	-	29.2	27.16	141.32	75.78	990.01	463.99
Safflower	2.48	0.31	2.48	3.1	2.48	-	8.61	0.73
Sesame	84,599.35	20,856.53	87,632.21	47,393.95	6,026.19	238.6	222,920.58	11,504.22
Rapeseed	222.3	55.5	2,467.10	3,461.98	-	-	2,474.85	676.31
Vegetables	3,234.55	4,070.70	3,173.69	3,058.80	1,315.07	3,622.38	3,683.36	1,490.23
Lettuce	21.48	83.06	0.93	3	1.89	-	-	-
Head Cabbage	65.47	520.1	23.79	35.77	46.33	181.88	4.75	0.05
Ethiopian Cabbage	0.11	0.05	0.45	1	0.11	0.03	51.6	2.01
Tomatoes	438.8	662.03	469.17	636.73	389.23	3,371.29	72.99	33.13
Green peppers	37.55	52.25	32.65	41.65	44.6	12.28	6.81	0.07
Red papers	2,668.46	2,749.99	2,646.70	2,340.65	832.86	56.89	3,546.46	1,454.93
Swiss chard	2.67	3.23	-	-	0.06	-	0.75	0.04
Root crops	423.93	716.21	589	657.87	240.94	121.27	372.7	936.49
Beet root	2.57	1.64	0.6	0.8	0.57	0.05	-	-
Carrot	2.15	1.42	1.04	2	0.75	0.03	0.5	0.02
Onion	375.43	685.74	474.11	535.77	225.85	59.99	283.65	13.81
Potatoes	41.06	18.92	56.39	60.84	-	-	88.2	922.56
Garlic	1.76	7.5	1.76	5.5	1.56	9	0.35	0.1
Taro/Godere'	-	-	-	-	-	-	-	-
Sweet potatoes	0.97	0.98	55.11	52.96	12.21	52.2	-	-
Other Temporary	630.37	861.21	508.07	5,347.41	914.48	4,801.99	364.48	3,875.60
Permanent crops	68,259.13	90,609.03	46,403.01	57,151.45	5,098.51	2,447.00	43,752.07	7,380.30
Fruit crops	2,527.88	14,053.98	2,413.47	16,187.73	430.6	10.24	1.2	-
Avocado	7.19	7.19	8.07	13.55	-	-	-	-
Bananas	25.1	5.63	5.67	4.63	-	-	0.25	-
Guava/Zeytin'	-	-	-	-	-	-	0.94	-
Lemons	33.72	15.3	33.84	10.3	-	-	-	-
Mangos	484.51	1,411.10	484.84	1,898.34	30.6	10.2	0.01	-
Oranges	1,682.70	9,821.57	1,623.92	12,122.92	-	-	-	-
Papayas	294.65	2,793.19	257.14	2,137.99	400	0.04	-	-
Pineapples	-	-	-	-	-	-	-	-
Cash crops	64,083.13	72,325.54	42,463.26	35,305.53	3,221.46	1,281.18	43,138.19	6,994.61
Chat	-	-	-	-	-	-	-	-
Coffee	17,783.47	30,460.23	16,932.37	21,843.97	189.8	825	-	-
Tea	274.86	311.41	274.78	105.38	0.08	-	-	-
Hopes/Gesho'	-	-	-	-	-	-	1.99	-
Enset	-	-	-	-	-	-	-	-
Sugar cane	42,876.01	38,080.32	20,998.32	9,758.76	-	-	70.35	67.5
Cotton	3,148.29	3,473.58	4,257.79	3,597.42	3,031.57	456.18	43,065.85	6,927.11
Other permanent crops	1,648.12	4,229.51	1,526.28	5,658.19	1,446.45	1,155.58	612.68	385.69

National
Table 3, Continued

Type of crops	Chemicals							
	Pesticides		Fungicides		Herbicides		Other	
	Area in Ha	Amount in Qts	Area in Ha	Amount in Qts	Area in Ha	Amount in Qts	Area in Ha	Amount in Qts
Total	186,804.75	7,964.06	109,382.63	4,162.21	341,500.33	20,647.80	72,875.12	21,839.62
Grains	78,442.45	2,538.11	33,520.80	589.92	173,505.04	4,732.49	5,617.61	650.12
Cereals	18,555.83	2,110.33	31,672.92	540.62	180,766.89	4,534.10	3,789.25	590.29
Teff	171.56	3.79	48.55	0.44	3,753.72	109.09	368.52	0.45
Barley	1.91	0.96	650.67	4.44	1,064.37	46.42	15	0.38
Wheat	3,983.62	29.75	26,886.02	490.3	48,237.58	516.85	98.13	6.33
Maize	10,674.56	1,401.75	1,085.85	23.55	32,001.15	1,272.48	1,731.16	428.01
Sorghum	3,015.73	49.65	2,931.62	20.51	74,894.93	2,570.31	1,576.45	155.12
Finger millet	28.02	6.67	14.91	0.59	84.09	3.95	-	-
Oats/Aju'	-	-	55.23	0.78	110.46	1.47	-	-
Rice	680.44	617.98	0.08	0.01	620.59	13.54	-	-
Pulse	3,217.84	32.39	287.59	34.86	4,629.53	90.43	325.7	28.13
Horae/Faba beans	325.29	1.73	0.5	0.1	353.24	4.66	-	-
Field peas	100.25	1.11	70.25	19.5	-	-	85.25	20.48
Haricot beans	165.43	3.3	216.84	15.26	458.32	5.37	123.35	-
Chick peas	1,657.10	23.37	-	-	538.77	24.07	54.17	1.35
Lentiles	3	0.04	-	-	-	-	-	-
Vetch/Grass peas	-	-	-	-	-	-	-	-
Soya beans	520.77	1.03	-	-	2,836.21	50.56	62.94	6.3
Fenugreek	446	1.82	-	-	443	5.77	-	-
Gibto	-	-	-	-	-	-	-	-
Oil seeds	56,668.78	395.17	1,560.29	14.44	8,108.62	107.96	1,502.66	31.7
Noug	-	-	-	-	36.35	0.48	-	-
Linseed	64.7	19.02	-	-	120	2.08	-	-
Ground nuts	1.64	-	-	-	76.54	1.67	-	-
Safflower	-	-	-	-	-	-	-	-
Sesame	55,088.19	365.38	1,560.29	14.44	6,809.97	86.85	1,502.66	31.7
		10.77	-	-	-	-	-	-
Rapeseed	1,514.25	-	-	-	1,065.77	16.88	-	-
Vegetables	1,735.46	78.81	1,774.74	34.24	268.26	41.08	1,595.35	4,667.94
Lettuce	21.41	0.59	-	-	-	-	0.96	-
Head Cabbage	85.74	6.31	9.67	0.24	5.36	0.09	20.13	3.84
Ethiopian Cabbage	1.58	0.03	-	-	-	-	-	-
Tomatoes	1,327.99	66.09	1,218.46	27.27	80.76	0.55	1,481.35	4,530.83
Green peppers	103.24	1.81	81.12	2.37	-	-	48.74	33.01
Red papers	194.48	3.98	463.95	4.34	182.15	40.44	44.05	98.27
Swiss chard	1.02	0.01	1.55	0.02	-	-	0.12	2
Root crops	1,321.09	37.08	624.84	24.65	34.78	8.68	631.7	604.14
Beet root	2.2	0.14	1.47	0.04	-	-	0.6	0.52
Carrot	0.12	-	-	-	-	-	-	-
Onion	1,311.75	36.7	617.89	24.09	30.13	0.93	616.35	603.2
Potatoes	-	-	-	-	-	-	3.78	0.02
Garlic	6.06	0.21	4.5	0.5	-	-	-	-
Taro/Godere'	-	-	-	-	-	-	10	-
Sweet potatoes	0.97	0.02	0.97	0.02	4.65	7.75	0.97	-
Other Temporary	1,353.07	52.52	826.43	723.79	412.88	36.6	2,002.22	1,375.26
Permanent crops	103,952.68	5,257.54	72,635.82	2,789.61	167,279.37	15,828.95	63,028.24	14,542.16
Fruit crops	3,357.09	114.91	3,279.37	132.27	2,074.40	63.15	6,267.87	9,099.55
Avocado	24.6	0.42	13.18	0.66	-	-	18.45	15.4
Bananas	1.35	0.08	9.03	0.03	1.35	0.24	67.27	-
Guava/Zeytun'	40.2	2.01	-	-	40.2	2.51	1.79	7.9
Lemons	33.72	0.31	34.89	0.09	33.72	0.38	101.96	12.63
Mangos	486.18	18.28	741.15	15.41	396.8	15.98	1,267.89	1,374.05
Oranges	1,964.53	88.78	1,628.07	56.3	1,433.03	35.47	4,205.89	6,819.58
Papayas	806.51	5.53	853.05	59.79	169.31	8.56	604.63	869.99
Pineapples	-	-	-	-	-	-	-	-
Cash crops	91,757.60	5,037.13	54,864.89	2,258.94	164,134.35	15,720.82	53,439.60	1,196.57
Chat	-	-	-	-	-	-	4.5	-
Coffee	-	-	248.5	5.15	35,158.34	2,346.96	1,571.71	254.45
Tea	-	-	-	-	284.98	0.6	549.56	895.4
Hopet/Gesho'	-	-	-	-	-	-	-	-
Enset	-	-	-	-	-	-	-	-
Sugar cane	19,494.89	454.05	52,667.33	2,196.09	127,203.36	13,343.16	19,121.71	24.59
Cotton	72,262.71	4,583.08	1,949.06	57.7	1,487.67	30.09	32,192.12	22.14
Other permanent crops	8,837.99	105.5	14,491.56	398.4	1,070.62	44.98	3,320.77	4,246.04

Table 3.1: Estimate of farm input applied cropland area and quantity of input used by crop and input types for commercial farms, 2006 E.C (2013/14)

Tigray Region

Type of Crop	CHEMICALS							
	UREA		DAP		Improved Seed		Indigenous Seed	
	Area in Ha	Amnt in Qts	Area in Ha	Amnt in Qts	Area in Ha	Amnt in Qts	Area in Ha	Amnt in Qts
Total	71,258.68	22,095.97	76,174.11	58,194.42	3,552.66	295.61	109,700.79	7,615.31
Grains	69,365.12	20,951.67	74,274.37	56,280.03	3,434.12	219.27	107,862.11	7,281.04
Cereals	22,664.56	6,859.10	24,539.41	17,411.34	543.56	128.16	43,752.05	3,347.07
Teff	141.81	39.19	155.46	60.12	186.46	47.54	48.58	13
Barley	-	-	-	-	-	-	-	-
Wheat	43.48	29.03	49.89	35.22	53.61	51.75	-	-
Maize	64.92	55.72	109.42	70.95	73.39	20.21	16.13	2.52
Sorghum	22,229.79	6,685.16	24,224.64	17,245.05	230.1	8.67	43,684.52	3,330.51
Finger millet	-	-	-	-	-	-	1.41	0.04
Oats/Aja'	-	-	-	-	-	-	-	-
Rice	184.56	50	-	-	-	-	1.41	1
Pulse	1.95	0.04	10.65	6.57	1.95	3	80.3	15.9
Horse/Faba beans	-	-	-	-	-	-	-	-
Field peas	-	-	-	-	-	-	-	-
Haricot beans	-	-	-	-	-	-	-	-
Chick peas	1.95	0.04	10.65	6.57	1.95	3	45.3	14.9
Lentiles	-	-	-	-	-	-	-	-
Vetch/Grass peas	-	-	-	-	-	-	-	-
Soya beans	-	-	-	-	-	-	-	-
Fenugreek	-	-	-	-	-	-	-	-
Gibto	-	-	-	-	-	-	35	1
Oil seeds	46,698.61	14,092.53	49,724.31	38,862.12	2,888.61	88.11	64,029.76	3,918.07
Nueg	-	-	-	-	-	-	-	-
Linseed	-	-	-	-	-	-	-	-
Ground nuts	-	-	-	-	-	-	-	-
Safflower	-	-	-	-	-	-	-	-
Sesame	46,698.61	14,092.53	49,724.31	38,862.12	2,888.61	88.11	64,029.76	3,918.07
Rapeseed	-	-	-	-	-	-	-	-
Vegetables	69.35	85.91	65.56	69.73	65.78	7.03	53.6	2.01
Lettuce	0.96	2.88	-	-	0.96	-	-	-
Head Cabbage	1.66	3.32	0.38	1	1.66	6.57	-	-
Ethiopian Cabbage	-	-	-	-	-	-	51	2
Tomatoes	34.47	48.64	33.37	39.64	31.35	0.12	2.6	0.01
Green peppers	17.05	17.05	17.05	17.05	17.05	0.15	-	-
Red papers	15.2	14.02	14.76	12.04	14.76	0.18	-	-
Swiss chard	-	-	-	-	-	-	-	-
Root crops	27.86	124.77	32.59	33.09	29.15	6.23	3.44	0.39
Beet root	-	-	-	-	-	-	-	-
Carrot	-	-	-	-	-	-	-	-
Onion	26.89	123.79	31.62	32.11	28.18	5.13	3.44	0.39
Potatoes	-	-	-	-	-	-	-	-
Garlic	-	-	-	-	-	-	-	-
Taro/Godere'	-	-	-	-	-	-	-	-
Sweet potatoes	0.97	0.98	0.97	0.98	0.97	1.1	-	-
Other Temporary	-	-	-	-	5.27	3.05	0.35	0.02
Permanent crops	1,796.35	933.62	1,801.59	1,811.57	18.34	60.03	1,781.29	331.85
Fruit crops	3.18	1.75	8.42	2.7	-	-	-	-
Avocado	-	-	0.88	0.25	-	-	-	-
Bananas	-	-	-	-	-	-	-	-
Guava/Zeytun'	-	-	-	-	-	-	-	-
Lemons	-	-	0.12	0.1	-	-	-	-
Mangos	1.92	0.75	6.04	1.25	-	-	-	-
Oranges	-	-	-	-	-	-	-	-
Papayas	1.26	1	1.38	1.1	-	-	-	-
Pineapples	-	-	-	-	-	-	-	-
Cash crops	1,774.55	913	1,774.55	1,790.00	-	-	1,774.72	330.85
Chat	-	-	-	-	-	-	-	-
Coffee	-	-	-	-	-	-	-	-
Tea	-	-	-	-	-	-	-	-
Hopes/Gesha'	-	-	-	-	-	-	-	-
Enset	-	-	-	-	-	-	-	-
Sugar cane	-	-	-	-	-	-	-	-
Cotton	1,774.55	913	1,774.55	1,790.00	-	-	1,774.72	330.85
Other permanent crops	18.62	18.87	18.62	18.87	18.34	60.03	6.57	1

Table 3, Tigray contnd.....

Type of crop	Chemicals						Other	
	Pesticides		Fungicides		Herbicides			
	Area in Ha	Amnt in Qts	Area in Ha	Amnt in Qts	Area in Ha	Amnt in Qts	Area in Ha	Amnt in Qts
Total	14,217.20	111.66	5,359.07	94.16	39,994.56	1,499.10		1,955.80
Grains	13,508.04	105.25	3,211.77	24.57	39,977.35	1,498.82		1,769.72
Cereals	453.59	3.85	2,837.88	18.75	38,976.47	1,495.81		1,755.53
Teff	-	-	-	-	234.62	2.03		93.61
Barley	-	-	-	-	17.49	0.2		-
Wheat	-	-	-	-	47.74	0.4		49.89
Maize	-	-	-	-	62.06	0.54		76.28
Sorghum	453.59	3.85	2,837.88	18.75	38,613.85	1,492.63		1,535.75
Finger millet	-	-	-	-	0.71	0.01		213.9
Oats/Aja'	-	-	-	-	-	-		-
Rice	-	-	-	-	-	-		-
Pulse	9.98	0.15	-	-	1.95	0.01		13.67
Horse/Faba beans	-	-	-	-	-	-		-
Field peas	-	-	-	-	-	-		-
Haricot beans	-	-	-	-	-	-		-
Chick peas	9.98	0.15	-	-	1.95	0.01		13.67
Lentils	-	-	-	-	-	-		-
Vetch/Grass peas	-	-	-	-	-	-		-
Soya beans	-	-	-	-	-	-		-
Fenugreek	-	-	-	-	-	-		-
Gibto	-	-	-	-	-	-		-
Oil seeds	13,044.47	101.25	373.89	5.82	998.93	3		0.52
Nueg	-	-	-	-	-	-		-
Linseed	-	-	-	-	-	-		-
Ground nuts	-	-	-	-	-	-		-
Safflower	-	-	-	-	-	-		-
Sesame	13,044.47	101.25	373.89	5.82	998.93	3		0.52
Rapeseed	-	-	-	-	-	-		-
Vegetables	126.37	2.49	108.37	3.55	2.06	0.08		71.51
Lettuce	0.96	0.21	-	-	-	-		0.96
Head Cabbage	1.66	0.33	-	-	-	-		2.95
Ethiopian Cabbage	-	-	-	-	-	-		1.97
Tomatoes	69.87	1.29	50.19	2.21	2.06	0.08		36.26
Green peppers	34.1	0.45	51.15	1.27	-	-		3.76
Red papers	19.77	0.23	7.03	0.08	-	-		17.05
Swiss chard	-	-	-	-	-	-		14.29
Root crops	72.3	2.66	50	6.51	15.15	0.2		-
Beet root	-	-	-	-	-	-		41.63
Carrot	-	-	-	-	-	-		20.15
Onion	71.33	2.64	49.03	6.49	15.15	0.2		-
Potatoes	-	-	-	-	-	-		40.66
Garlic	-	-	-	-	-	-		20.15
Taro/'Godere'/	-	-	-	-	-	-		-
Sweet potatoes	0.97	0.02	0.97	0.02	-	-		-
Other Temporary	-	-	-	-	-	-		0.97
Permanent crops	510.49	1.26	1,988.93	59.53	-	-		8.38
Fruit crops	-	-	5.12	0.6	-	-		64.56
Avocado	-	-	0.88	0.25	-	-		55.36
Bananas	-	-	-	-	-	-		-
Guava/'Leytun'/	-	-	-	-	-	-		-
Lemons	-	-	-	-	-	-		-
Mangos	-	-	4.12	0.25	-	-		32.63
Oranges	-	-	-	-	-	-		19.65
Papayas	-	-	0.12	0.1	-	-		3.08
Pineapples	-	-	-	-	-	-		-
Cash crops	492.15	0.22	1,949.06	57.7	-	-		0.7
Chat	-	-	-	-	-	-		-
Coffee	-	-	-	-	-	-		0.7
Tea	-	-	-	-	-	-		-
Hopet/'Gesho'/	-	-	-	-	-	-		-
Enset	-	-	-	-	-	-		-
Sugar cane	-	-	-	-	-	-		-
Cotton	492.15	0.22	1,949.06	57.7	-	-		-
Other permanent crops	18.34	1.04	34.75	1.23	-	-		8.5

Table 3.2: Estimate of farm input applied cropland area and quantity of input used by crop and input types for commercial farms, 2006 E.C (2013/14) Meher Main Season **Afar Region**

Chemical Fertilizer Applied	URSA		DAP		Seed Type			
	Area in Ha	Amount in Qts	Area in Ha	Amount in Qts	Improved Seed		Indigenous Seed	
					Area in Ha	Area in Ha	Area in Ha	Amount in Qts
Total	21,911.17	2,507.89	17,481.18	612.7	76.2	7.16	34,797.45	4,950.55
Grains	35.8	7.2	540.9	-	65.2	6.96	2,143.21	86.36
Cereals	35.8	7.2	540.9	-	65.2	6.96	707.91	39.03
Teff	-	-	-	-	-	-	-	-
Barley	35.8	7.2	-	-	-	-	-	-
Wheat	-	-	-	-	-	-	-	-
Maize	-	-	540.9	-	65.2	6.96	701.71	38.61
Sorghum	-	-	-	-	-	-	6.2	0.42
Finger millet	-	-	-	-	-	-	-	-
Oats/Aja'	-	-	-	-	-	-	-	-
Rice	-	-	-	-	-	-	-	-
Pulse	-	-	-	-	-	-	44.8	4.5
Horse/Faba beans	-	-	-	-	-	-	-	-
Field peas	-	-	-	-	-	-	-	-
Haricot beans	-	-	-	-	-	-	44.8	4.5
Chick peas	-	-	-	-	-	-	-	-
Lentils	-	-	-	-	-	-	-	-
Vetch/Grass peas	-	-	-	-	-	-	-	-
Soya beans	-	-	-	-	-	-	-	-
Fenugreek	-	-	-	-	-	-	-	-
Gibto	-	-	-	-	-	-	-	-
Oil seeds	-	-	-	-	-	-	1,390.50	42.83
Nueg	-	-	-	-	-	-	-	-
Linseed	-	-	-	-	-	-	-	-
Ground nuts	-	-	-	-	-	-	-	-
Safflower	-	-	-	-	-	-	-	-
Sesame	-	-	-	-	-	-	1,390.50	42.83
Rapeseed	-	-	-	-	-	-	-	-
Vegetables	-	-	-	-	11	0.2	14.42	0.14
Lettuce	-	-	-	-	-	-	-	-
Head Cabbage	-	-	-	-	-	-	-	-
Ethiopian Cabbage	-	-	-	-	-	-	-	-
Tomatoes	-	-	-	-	11	0.2	14.42	0.14
Green peppers	-	-	-	-	-	-	-	-
Red papers	-	-	-	-	-	-	-	-
Swiss chard	-	-	-	-	-	-	-	-
Root crops	-	-	-	-	-	-	14.42	0.14
Beet root	-	-	-	-	-	-	-	-
Carrot	-	-	-	-	-	-	-	-
Onion	-	-	-	-	-	-	14.42	0.14
Potatoes	-	-	-	-	-	-	-	-
Garlic	-	-	-	-	-	-	-	-
Taro/'Godere'/	-	-	-	-	-	-	-	-
Sweet potatoes	-	-	-	-	-	-	-	-
Other Temporary	-	-	-	-	-	-	-	-
Permanent crops	21,875.37	2,500.69	16,940.28	612.7	-	-	32,625.40	4,863.91
Fruit crops	16.52	2.91	-	-	-	-	-	-
Avocado	-	-	-	-	-	-	-	-
Bananas	-	-	-	-	-	-	-	-
Guava/'Zeytun'/	-	-	-	-	-	-	-	-
Lemons	-	-	-	-	-	-	-	-
Mangos	-	-	-	-	-	-	-	-
Oranges	16.52	2.91	-	-	-	-	-	-
Papayas	-	-	-	-	-	-	-	-
Pineapples	-	-	-	-	-	-	-	-
Cash crops	21,856.43	2,497.35	16,940.28	612.7	-	-	32,625.40	4,863.91
Chat	-	-	-	-	-	-	-	-
Coffee	-	-	-	-	-	-	-	-
Tea	-	-	-	-	-	-	-	-
Hopes/'Gesho'/	-	-	-	-	-	-	-	-
Enset	-	-	-	-	-	-	-	-
Sugar cane	21,742.87	1,767.85	16,551.46	572.61	-	-	-	-
Cotton	113.56	729.5	388.82	40.09	-	-	32,625.40	4,863.91
Other permanent crops	2.42	0.43	-	-	-	-	-	-

Table 3.2: Estimate of farm input applied cropland area and quantity of input used by crop and input types for commercial farms, 2006 E.C (2013/14) Meher Main Season *Afar Region*

Chemical Fertilizer Applied	Chemical Fertilizer Applied				Seed Type			
	UREA		DAP		Improved Seed		Indigenous Seed	
	Area in Ha	Amount in Qts	Area in Ha	Amount in Qts	Area in Ha	Area in Ha	Area in Ha	Amount in Qts
Total	21,911.17	2,507.89	17,481.18	612.7	76.2	7.16	34,797.45	4,950.55
Grains	35.8	7.2	540.9	-	65.2	6.96	2,143.21	86.16
Cereals	35.8	7.2	540.9	-	65.2	6.96	707.91	39.03
Teff	-	-	-	-	-	-	-	-
Barley	35.8	7.2	-	-	-	-	-	-
Wheat	-	-	-	-	-	-	-	-
Maize	-	-	540.9	-	65.2	6.96	701.71	38.61
Sorghum	-	-	-	-	-	-	6.2	0.42
Finger millet	-	-	-	-	-	-	-	-
Oats/'Aja'	-	-	-	-	-	-	-	-
Rice	-	-	-	-	-	-	-	-
Pulse	-	-	-	-	-	-	44.8	4.5
Horse/Faba beans	-	-	-	-	-	-	-	-
Field peas	-	-	-	-	-	-	-	-
Haricot beans	-	-	-	-	-	-	44.8	4.5
Chick peas	-	-	-	-	-	-	-	-
Lentils	-	-	-	-	-	-	-	-
Vetch/Grass peas	-	-	-	-	-	-	-	-
Soya beans	-	-	-	-	-	-	-	-
Fenugreek	-	-	-	-	-	-	-	-
Gibfo	-	-	-	-	-	-	-	-
Oil seeds	-	-	-	-	-	-	1,390.50	42.83
Nuug	-	-	-	-	-	-	-	-
Linseed	-	-	-	-	-	-	-	-
Ground nuts	-	-	-	-	-	-	-	-
Safflower	-	-	-	-	-	-	-	-
Sesame	-	-	-	-	-	-	1,390.50	42.83
Rapeseed	-	-	-	-	-	-	-	-
Vegetables	-	-	-	-	11	0.2	14.42	0.14
Lettuce	-	-	-	-	-	-	-	-
Head Cabbage	-	-	-	-	-	-	-	-
Ethiopian Cabbage	-	-	-	-	-	-	-	-
Tomatoes	-	-	-	-	11	0.2	14.42	0.14
Green peppers	-	-	-	-	-	-	-	-
Red papers	-	-	-	-	-	-	-	-
Swiss chard	-	-	-	-	-	-	-	-
Root crops	-	-	-	-	-	-	14.42	0.14
Beet root	-	-	-	-	-	-	-	-
Carrot	-	-	-	-	-	-	-	-
Onion	-	-	-	-	-	-	14.42	0.14
Potatoes	-	-	-	-	-	-	-	-
Garlic	-	-	-	-	-	-	-	-
Taro/'Godere'/	-	-	-	-	-	-	-	-
Sweet potatoes	-	-	-	-	-	-	-	-
Other Temporary	-	-	-	-	-	-	-	-
Permanent crops	21,875.37	2,500.69	16,940.28	612.7	-	-	32,625.40	4,863.91
Fruit crops	16.52	2.91	-	-	-	-	-	-
Avocado	-	-	-	-	-	-	-	-
Bananas	-	-	-	-	-	-	-	-
Guava/'Zeytun'/	-	-	-	-	-	-	-	-
Lemons	-	-	-	-	-	-	-	-
Mangos	-	-	-	-	-	-	-	-
Oranges	16.52	2.91	-	-	-	-	-	-
Papayas	-	-	-	-	-	-	-	-
Pineapples	-	-	-	-	-	-	-	-
Cash crops	21,856.43	2,497.35	16,940.28	612.7	-	-	32,625.40	4,863.91
Chat	-	-	-	-	-	-	-	-
Coffee	-	-	-	-	-	-	-	-
Tea	-	-	-	-	-	-	-	-
Hopes/'Gesho'/	-	-	-	-	-	-	-	-
Enset	-	-	-	-	-	-	-	-
Sugar cane	21,742.87	1,767.85	16,551.46	572.61	-	-	-	-
Cotton	113.56	729.5	388.82	40.09	-	-	32,625.40	4,863.91
Other permanent crops	2.42	0.43	-	-	-	-	-	-

Ahmara Region

Table 3.2: Estimate of farm input applied cropland area and quantity of input used by crop and input types for commercial farms, 2006 E.C (2013/14) Meher Main Season

Type of Crop	UREA		DAP		Improved Seed		Indigenous Seed	
	Area in Ha	Amount in Qts	Area in Ha	Amount in Qts	Area in Ha	Amount in Qts	Area in Ha	Amount in Qts
Total	51,022.70	17,951.63	53,574.15	21,934.32	12,155.19	3,394.50	158,773.60	11,128.90
Grains	49,841.61	17,089.21	52,453.39	21,064.39	11,667.60	3,340.72	156,813.79	10,634.42
Cereals	13,850.41	10,828.23	14,934.28	12,444.20	9,891.80	2,680.49	35,466.51	4,239.32
Teff	511.72	309	1,334.69	777.07	930.81	325.7	1,930.44	251.78
Barley	34.33	3.58	-	-	-	-	-	-
Wheat	72.02	46.4	116.93	93.09	73.57	104.74	92.54	86.57
Maize	8,495.26	8,948.48	8,388.41	10,005.24	7,741.22	1,942.43	1,416.81	263.54
Sorghum	4,491.04	1,015.81	4,810.99	1,236.84	378.22	72.79	31,785.51	3,579.31
Finger millet	208.04	466.96	234.31	291.22	219.04	196.07	239.76	55.07
Oats/Aja'	-	-	-	-	-	-	-	-
Rice	38	38	48.95	40.74	48.95	38.76	1.45	1.06
Pulse	38.46	3.04	704.79	564.54	738.05	581.8	1,492.83	1,189.36
Horse/Faba beans	-	-	8.44	1	-	-	8.44	6.09
Field peas	-	-	-	-	-	-	-	-
Haricot beans	34.46	2.54	280.94	161.9	161.89	123.69	873.41	861.49
Chick peas	4	0.5	-	-	163.24	142.88	159.26	119.76
Lentiles	-	-	-	-	-	-	7.36	1.57
Vetch/Grass peas	-	-	-	-	-	-	-	-
Soya beans	-	-	415.41	401.65	412.92	315.24	444.37	200.46
Fenugreek	-	-	-	-	-	-	-	-
Gibto	-	-	-	-	-	-	-	-
Oil seeds	35,952.74	6,257.94	36,814.32	8,055.65	1,537.75	78.43	119,854.45	5,205.74
Nueg	-	-	-	-	53.98	3.74	23.47	3.33
Linseed	-	-	-	-	-	-	-	-
Ground nuts	-	-	29.2	27.16	31.68	28.18	32.01	28.86
Safflower	2.48	0.31	2.48	3.1	2.48	-	6.36	0.53
Sesame	35,950.26	6,257.63	36,782.64	8,025.39	1,449.61	46.51	119,792.60	5,173.02
Rapeseed	-	-	-	-	-	-	-	-
Vegetables	500.46	536.65	536.56	525.72	147.94	3.45	306.41	10.58
Lettuce	-	-	-	-	-	-	-	-
Head Cabbage	3.39	1.11	-	-	0.41	-	-	-
Ethiopian Cabbage	-	-	-	-	-	-	-	-
Tomatoes	35.12	27.14	88.84	24.47	29.66	0.15	-	-
Green peppers	4.62	4.62	-	-	4.62	0.02	-	-
Red papers	455.77	503.27	447.72	501.25	113.25	3.28	306.41	10.58
Swiss chard	1.55	0.51	-	-	-	-	-	-
Root crops	34.44	43.18	102.98	93.19	23.18	0.75	3.91	0.22
Beet root	1.17	0.38	-	-	0.13	-	-	-
Carrot	-	-	0.02	-	0.09	-	-	-
Onion	33.27	42.79	48.83	41.21	22.96	0.75	3.91	0.22
Potatoes	-	-	-	-	-	-	-	-
Garlic	-	-	-	-	-	-	-	-
Taro/Godere'	-	-	-	-	-	-	-	-
Sweet potatoes	-	-	54.14	51.98	-	-	-	-
Other Temporary	-	-	20.78	3	71.66	14.34	38.11	24.85
Permanent crops	646.19	282.59	460.44	248.02	244.81	35.24	1,611.38	458.83
Fruit crops	96.65	36.93	46.43	9.82	-	-	-	-
Avocado	0.04	0.04	0.04	-	-	-	-	-
Bananas	23.75	2.63	4.32	1.63	-	-	-	-
Guava/Zeytun'	-	-	-	-	-	-	-	-
Lemons	-	-	-	-	-	-	-	-
Mangos	63.64	22.43	36.95	6.74	-	-	-	-
Oranges	0.23	0.2	-	-	-	-	-	-
Papayas	8.99	11.63	5.12	1.45	-	-	-	-
Pineapples	-	-	-	-	-	-	-	-
Cash crops	547.49	245.2	411.96	237.2	239.26	31.58	1,468.36	384.34
Chat	-	-	-	-	-	-	-	-
Coffee	6.77	1.42	6.77	2.84	-	-	-	-
Tea	0.08	-	-	-	0.08	-	-	-
Hopes/Gesho'	-	-	-	-	-	-	-	-
Enset	-	-	-	-	-	-	-	-
Sugar cane	1.8	3	-	-	-	-	-	-
Cotton	538.84	240.78	405.19	234.36	239.18	31.58	1,468.36	384.34
Other permanent crops	2.05	0.46	2.05	1	5.55	3.66	143.02	74.49

TABLE 3.3 contd
Ahmara Region

Type of crop	Chemicals						Other	
	Pesticides		Fungicides		Herbicides			
	Area in Ha	Amount in Qts	Area in Ha	Amount in Qts	Area in Ha	Amount in Qts	Area in Ha	Amount in Qts
Total	45,957.05	432.24	703.34	5.95	35,743.26	1,169.07	910.82	232.42
Grains	44,750.97	406.83	330.83	1.52	35,680.24	1,167.91	904.94	126.22
Cereals	4,911.06	179.73	151.64	1.04	32,895.98	1,122.39	845.28	94.52
Teff	18.91	0.24	14.56	0.44	493.51	72.68	265.41	-
Barley	-	-	-	-	-	-	-	-
Wheat	13.24	0.14	-	-	30.67	0.09	-	-
Maize	2,875.63	134.79	122.18	0.4	2,821.23	97.29	579.87	94.52
Sorghum	2,003.29	44.56	14.9	0.2	29,460.66	948.28	-	-
Finger millet	-	-	-	-	51.92	3.74	-	-
Oats/'Aja'	-	-	-	-	-	-	-	-
Rice	-	-	-	-	38	0.31	-	-
Pulse	396.38	8.94	-	-	721.07	27.29	-	-
Horse/Faba beans	-	-	-	-	-	-	-	-
Field peas	-	-	-	-	-	-	-	-
Haricot beans	48.98	0.4	-	-	207.26	3.46	-	-
Chick peas	31.65	8.16	-	-	167.58	19.79	-	-
Lentiles	-	-	-	-	-	-	-	-
Vetch/Grass peas	-	-	-	-	-	-	-	-
Soya beans	315.75	0.38	-	-	346.23	4.04	-	-
Fenugreek	-	-	-	-	-	-	-	-
Gibto	-	-	-	-	-	-	-	-
Oil seeds	39,443.53	217.96	179.19	0.48	2,063.19	18.23	59.66	31.7
Nueg	-	-	-	-	-	-	-	-
Linseed	-	-	-	-	-	-	-	-
Ground nuts	-	-	-	-	19	0.24	-	-
Safflower	-	-	-	-	-	-	-	-
Sesame	39,443.53	217.96	179.19	0.48	2,044.19	17.99	59.66	31.7
Rapeseed	-	-	-	-	-	-	-	-
Vegetables	43.63	0.75	100.58	1.36	42.43	0.99	5.09	98.3
Lettuce	-	-	-	-	-	-	-	-
Head Cabbage	0.05	-	3.30	0.04	-	-	-	-
Ethiopian Cabbage	-	-	-	-	-	-	-	-
Tomatoes	1.23	0.01	84.81	1.13	-	-	3.44	0.03
Green peppers	-	-	-	-	-	-	-	-
Red papers	42.35	0.74	10.83	0.16	42.43	0.99	1.65	98.27
Swiss chard	-	-	1.55	0.02	-	-	-	-
Root crops	25.94	0.5	42.68	0.82	-	-	-	-
Beet root	-	-	1.17	0.02	-	-	-	-
Carrot	-	-	-	-	-	-	-	-
Onion	25.94	0.5	41.5	0.79	-	-	-	-
Potatoes	-	-	-	-	-	-	-	-
Garlic	-	-	-	-	-	-	-	-
Taro/'Godere'	-	-	-	-	-	-	-	-
Sweet potatoes	-	-	-	-	-	-	-	-
Other Temporary	-	-	-	-	-	-	-	-
Permanent crops	1,136.51	24.36	229.25	2.25	20.59	0.17	0.79	7.9
Fruit crops	71.81	0.32	226.65	2.17	-	-	0.79	7.9
Avocado	-	-	-	-	-	-	-	-
Bananas	-	-	-	-	-	-	-	-
Guava/'Zeytun'	-	-	-	-	-	-	0.79	7.9
Lemons	-	-	1.17	0.01	-	-	-	-
Mangos	68.71	0.2	211.02	2.08	-	-	-	-
Oranges	3.1	0.12	5.74	0.02	-	-	-	-
Papayas	-	-	8.72	0.06	-	-	-	-
Pineapples	-	-	-	-	-	-	-	-
Cash crops	1,064.47	23.99	-	-	18.54	0.17	-	-
Chat	-	-	-	-	-	-	-	-
Coffee	-	-	-	-	6.77	0.1	-	-
Tea	-	-	-	-	-	-	-	-
Hopes/'Gesho'	-	-	-	-	-	-	-	-
Enset	-	-	-	-	-	-	-	-
Sugar cane	-	-	-	-	-	-	-	-
Cotton	1,064.47	23.99	-	-	11.77	0.07	-	-
Other permanent crops	0.23	0.05	2.6	0.08	2.05	-	-	-

Table 3. 4: Estimate of farm input applied cropland area and quantity of input used by crop and input types for commercial farms, 2006 E.C (2013/14) Meher Main Season Oromia Region

Type of crop	Chemical Fertilizer Applied				Seed Type			
	UREA		DAP		Improved Seed		Indigenous Seed	
	Area in Ha	Amount in Qts	Area in Ha	Amount in Qts	Area in Ha	Amount in Qts	Area in Ha	Amount in Qts
Total	138,257.89	116,827.58	87,677.51	113,629.37	54,576.79	65,693.00	28,876.05	37,288.81
Grains	101,214.77	45,296.64	68,311.30	69,868.54	53,356.33	61,277.73	28,120.87	36,813.95
Cereals	98,164.68	43,980.80	61,872.76	63,500.25	49,160.30	57,682.52	18,265.28	32,789.41
Teff	361.14	173.7	603.15	476.72	582.74	273.91	459.74	295.21
Barley	492.95	324.33	1,104.30	1,191.41	757.89	970.7	217.95	360.16
Wheat	77,200.94	17,376.87	39,585.03	37,654.89	28,466.07	50,119.81	13,906.18	31,248.12
Maize	19,907.70	26,062.01	20,124.38	23,934.27	19,108.50	6,294.66	3,175.82	259.77
Sorghum	84.81	97.38	305.39	157.93	243.61	22.94	2,276.70	387.92
Finger millet	20.7	32	29.06	8.8	-	-	55.71	50.99
Oats/Aja'	41.73	22.5	55.23	58.5	-	-	55.23	117
Rice	64.73	32	66.23	15.75	1.5	0.5	117.96	70.25
Pulse	1,635.35	996.76	2,788.80	2,443.63	3,644.19	3,489.35	2,961.56	2,599.47
Horse/Faba beans	9	4.5	845.68	841.5	986.86	1,677.65	18.62	27.25
Field peas	15	30	15	30	-	-	-	-
Haricot beans	475.62	611.47	731.36	740.66	1,428.46	1,096.03	529.89	345.85
Chick peas	42	37.5	24.2	22.45	573.78	479.5	332	242.33
Lentils	-	-	3	1	-	-	3	3
Vetch/Grass peas	-	-	-	-	-	-	-	-
Soya beans	650.73	308.87	1,169.57	808.02	212.09	232.18	2,075.05	1,972.05
Fenugreek	443	4.43	-	-	443	4	3	3
Gilto	-	-	-	-	-	-	-	-
Oil seeds	1,414.74	319.08	3,649.74	3,924.66	551.84	105.86	6,894.03	1,431.07
Nueg	-	-	52.5	26.25	264.23	7.08	653.76	115.9
Linseed	60	15	259	162.5	199	78.5	60	45
Ground nuts	-	-	-	-	22.5	4.5	603.33	268.14
Safflower	-	-	-	-	-	-	2.25	0.2
Sesame	1,132.44	248.58	871.14	273.93	66.11	15.78	3,099.85	325.52
Rapeseed	222.3	55.5	2,467.10	3,461.98	-	-	2,474.85	676.31
Vegetables	696.51	845.22	639.36	580.45	187.25	3,370.67	244.94	96.16
Lettuce	20.52	80.18	0.93	3	0.93	-	-	-
Head Cabbage	11.7	34.55	13.47	20.75	4.47	0.05	3.75	0.02
Ethiopian Cabbage	-	-	0.45	1	-	-	0.6	0.01
Tomatoes	209.21	301.87	187.09	316.77	175.83	3,370.53	15.75	0.6
Green peppers	12.46	27.54	12.46	24.47	6.03	0.09	6.81	0.07
Red papers	441.61	398.38	424.97	214.46	-	-	218.03	95.46
Swiss chard	1.02	2.72	-	-	-	-	-	-
Root crops	267.67	432.63	286.67	301.84	77.34	47.55	174.34	156.13
Beet root	1.4	1.26	0.6	0.8	0.44	0.05	-	-
Carrot	2.15	1.42	1.03	2	0.66	0.03	-	-
Onion	262.37	422.45	273.96	273.54	74.68	38.47	173.36	4.63
Potatoes	-	-	9.33	20	-	-	0.63	151.4
Garlic	1.76	7.5	1.76	5.5	1.56	9	0.35	0.1
Taro/Godere'	-	-	-	-	-	-	-	-
Sweet potatoes	-	-	-	-	-	-	-	-
Other Temporary	353.45	415.01	288.4	2,063.24	136.56	52.01	75.31	21.48
Permanent crops	35,725.49	69,838.08	18,151.78	40,813.30	819.31	945.04	260.59	201.09
Fruit crops	2,390.50	13,957.76	2,337.97	16,144.06	400	0.04	-	-
Avocado	7.15	7.15	7.15	13.3	-	-	-	-
Bananas	1.35	3	1.35	3	-	-	-	-
Guava/Zeytun'	-	-	-	-	-	-	-	-
Lemons	33.72	15.3	33.72	10.2	-	-	-	-
Mangos	398.3	1,336.30	421.19	1,859.20	-	-	-	-
Oranges	1,665.59	9,815.46	1,623.92	12,122.92	-	-	-	-
Papayas	284.4	2,780.56	250.65	2,135.45	400	0.04	-	-
Pineapples	-	-	-	-	-	-	-	-
Cash crops	32,274.63	52,080.14	14,883.60	19,543.50	189	825	72.34	67.5
Chat	-	-	-	-	-	-	-	-
Coffee	10,690.13	14,445.07	9,983.59	9,147.35	189	825	-	-
Tea	-	-	-	-	-	-	-	-
Hopes/Gesho'	-	-	-	-	-	-	1.99	-
Enset	-	-	-	-	-	-	-	-
Sugar cane	21,131.34	36,309.47	4,446.86	9,186.15	-	-	70.35	67.5
Cotton	453.16	1,325.60	453.16	1,210.00	-	-	-	-
Other permanent crops	1,060.36	3,800.18	930.21	5,125.74	230.31	120	188.25	133.59

Table 3.4, contd,
Oromia Region

Type of crop	Chemicals						Other	
	Pesticides		Fungicides		Herbicides			
	Area in Ha	Amount in Qts	Area in Ha	Amount in Qts	Area in Ha	Amount in Qts	Area in Ha	Amount in Qts
Total	37,716.35	897.68	61,592.93	2,646.68	255,123.42	13,828.04	15,837.39	16,974.00
Grains	8,324.66	178.39	28,129.10	525.99	63,432.20	1,971.22	533.80	32.44
Cereals	5,585.67	151.59	27,886.76	508.23	58,715.84	1,828.05	369.75	5.09
Teff	48.34	0.45	31.99	-	660.80	11.11	9.50	0.45
Barley	1.91	0.96	630.67	4.44	1,002.30	11.06	15.00	0.38
Wheat	3,861.47	23.86	26,680.38	489.70	43,423.52	473.97	-	-
Mulise	1,622.74	125.51	372.67	11.15	14,185.13	812.15	310.75	-
Sorghum	49.72	0.76	78.84	1.56	328.69	8.23	84.50	4.26
Finger millet	1.50	0.04	14.91	0.59	4.95	0.06	-	-
Oats/'Aja'	-	-	55.23	0.78	110.46	1.47	-	-
Rice	-	-	0.08	0.01	-	-	-	-
Pulse	1,109.88	10.03	232.34	17.76	2,175.33	27.27	164.05	27.35
Horse/Faba beans	325.29	1.73	0.50	0.10	353.24	4.66	-	-
Field peas	45.00	0.44	15.00	2.40	-	-	30.00	20.00
Haricot beans	116.45	2.90	216.84	15.26	112.61	0.38	78.55	-
Chick peas	174.14	3.10	-	-	138.20	0.67	40.50	1.35
Lentiles	1.00	0.04	-	-	-	-	-	-
Vetch/Grass peas	-	-	-	-	-	-	-	-
Soya beans	-	-	-	-	1,128.29	15.79	15.00	6.00
Fenugreek	446.00	1.82	-	-	443.00	5.77	-	-
Gibta	-	-	-	-	-	-	-	-
Oil seeds	1,629.11	16.77	-	-	1,541.03	25.90	-	-
Nueg	-	-	-	-	1.95	0.14	-	-
Linseed	-	-	-	-	120.00	2.08	-	-
Ground nuts	-	-	-	-	37.50	1.19	-	-
Safflower	-	-	-	-	-	-	-	-
Sesame	114.86	6.00	-	-	315.81	5.61	-	-
Rapeseed	1,514.25	10.77	-	-	1,065.77	16.88	-	-
Vegetables	1,167.03	62.69	1,000.70	20.20	54.16	36.52	1,051.10	4,110.95
Lettuce	20.45	0.38	-	-	-	-	-	-
Head Cabbage	40.49	1.01	5.78	0.19	1.50	0.03	6.49	1.87
Ethiopian Cabbage	1.58	0.03	-	-	-	-	-	-
Tomatoes	1,013.36	58.89	963.84	18.88	16.50	0.24	999.16	4,083.08
Green peppers	55.77	1.09	29.97	1.11	-	-	28.31	26.00
Red papers	34.38	1.28	1.13	0.02	36.16	36.25	17.15	-
Swiss chard	1.02	0.01	-	-	-	-	-	-
Root crops	1,046.65	18.76	437.39	12.85	6.45	0.24	383.77	141.16
Beet root	1.70	0.01	0.30	0.01	-	-	0.60	0.92
Carrot	0.12	-	-	-	-	-	-	-
Onion	1,038.77	18.53	432.59	12.33	6.45	0.24	383.17	140.24
Potatoes	-	-	-	-	-	-	-	-
Garlic	6.06	0.21	4.50	0.50	-	-	-	-
Taru/'Godere'	-	-	-	-	-	-	-	-
Sweet potatoes	-	-	-	-	-	-	-	-
Other Temporary	1,151.57	16.45	374.87	9.14	9.38	0.52	1,667.03	823.96
Permanent crops	26,026.44	621.39	31,660.87	2,078.50	91,621.23	11,919.54	12,201.69	11,865.49
Fruit crops	3,034.32	112.07	2,835.32	125.00	2,074.40	63.15	5,871.61	7,935.65
Avocado	24.60	0.42	12.30	0.41	-	-	18.45	15.40
Bananas	1.35	0.08	-	-	1.35	0.24	1.35	-
Guava/'Zeytun'	40.20	2.01	-	-	40.20	2.51	-	-
Lemons	33.72	0.31	33.72	0.08	33.72	0.38	101.16	6.63
Mangoes	404.30	17.00	513.00	12.39	396.80	15.98	1,213.79	1,374.05
Oranges	1,743.14	86.77	1,433.03	53.27	1,433.03	35.47	3,936.83	6,391.58
Papayas	787.01	5.48	843.28	58.85	169.31	8.56	600.04	147.99
Pineapples	-	-	-	-	-	-	-	-
Cash crops	14,303.48	413.31	14,373.75	1,556.74	88,489.11	11,833.73	3,164.39	225.96
Chat	-	-	-	-	-	-	4.50	-
Coffee	-	-	0.75	0.10	16,138.01	1,053.69	1,091.48	201.37
Tea	-	-	-	-	-	-	-	-
Hopes/'Gesho'	-	-	-	-	-	-	-	-
Enset	-	-	-	-	-	-	-	-
Sugar cane	14,303.48	413.31	14,373.00	1,556.64	72,351.11	10,780.04	1,761.50	24.59
Cotton	-	-	-	-	-	-	306.91	-
Other permanent crops	8,688.64	96.01	14,451.80	396.76	1,057.72	22.66	3,165.69	3,703.88

Table 3.5: Estimate of farm input applied cropland area and quantity of input used by crop and input types for commercial farms, 2006 E.C. (2013/14)
Somali Region

Type of crop	Chemical Fertilizer Applied				Seed Type			
	UREA		DAP		Improved Seed		Indigenous Seed	
	Area in Ha	Amnt in Qts	Area in Ha	Amnt in Qts	Area in Ha	Amnt in Qts	Area in Ha	Amnt in Qts
Total	15.60	12.78	4.82	2.65	37.86	17.55	789.36	298.60
Grains	6.84	2.50	-	-	32.48	17.45	725.34	296.68
Cereals	6.84	2.50	-	-	32.48	17.45	630.46	167.10
Teff	-	-	-	-	-	-	-	-
Barley	-	-	-	-	-	-	-	-
Wheat	-	-	-	-	-	-	577.17	145.44
Maize	6.84	2.50	-	-	32.48	17.45	21.83	11.62
Sorghum	-	-	-	-	-	-	31.47	10.04
Finger millet	-	-	-	-	-	-	-	-
Oats/'Aju'	-	-	-	-	-	-	-	-
Rice	-	-	-	-	-	-	-	-
Pulse	-	-	-	-	-	-	92.92	127.07
Horse/Faba beans	-	-	-	-	-	-	-	-
Field peas	-	-	-	-	-	-	-	-
Haricot beans	-	-	-	-	-	-	-	-
Chick peas	-	-	-	-	-	-	92.92	127.07
Lentiles	-	-	-	-	-	-	-	-
Vetch/Grass peas	-	-	-	-	-	-	-	-
Soya beans	-	-	-	-	-	-	-	-
Fenugreek	-	-	-	-	-	-	-	-
Gibba	-	-	-	-	-	-	-	-
Oil seeds	-	-	-	-	-	-	1.96	2.51
Nutg	-	-	-	-	-	-	-	-
Linseed	-	-	-	-	-	-	-	-
Ground nuts	-	-	-	-	-	-	-	-
Safflower	-	-	-	-	-	-	-	-
Sesame	-	-	-	-	-	-	1.96	2.51
Rapeseed	-	-	-	-	-	-	-	-
Vegetables	1.51	1.26	1.30	1.25	1.85	0.05	3.19	0.03
Lettuce	-	-	-	-	-	-	-	-
Head Cabbage	-	-	-	-	0.50	0.01	-	-
Ethiopian Cabbage	-	-	-	-	-	-	-	-
Tomatoes	1.09	1.15	1.09	1.15	1.09	0.03	3.19	0.03
Green peppers	0.42	0.11	0.21	0.10	0.26	0.01	-	-
Red papers	-	-	-	-	-	-	-	-
Swiss chard	-	-	-	-	-	-	-	-
Root crops	6.92	8.75	3.20	1.15	3.20	0.04	58.73	0.09
Beet root	-	-	-	-	-	-	-	-
Carrot	-	-	-	-	-	-	-	-
Onion	6.92	8.75	3.20	1.15	3.20	0.04	58.73	0.09
Potatoes	-	-	-	-	-	-	-	-
Garlic	-	-	-	-	-	-	-	-
Taro/'Godere'/	-	-	-	-	-	-	-	-
Sweet potatoes	-	-	-	-	-	-	-	-
Other Temporary	0.33	0.27	-	-	0.33	0.01	-	-
Permanent crops	-	-	0.32	0.25	-	-	2.10	1.80
Fruit crops	-	-	-	-	-	-	-	-
Avocado	-	-	-	-	-	-	-	-
Bananas	-	-	-	-	-	-	-	-
Guava/'Zeytun'/	-	-	-	-	-	-	-	-
Lemons	-	-	-	-	-	-	-	-
Mangos	-	-	-	-	-	-	-	-
Oranges	-	-	-	-	-	-	-	-
Papayas	-	-	-	-	-	-	-	-
Pineapples	-	-	-	-	-	-	-	-
Cash crops	-	-	-	-	-	-	-	-
Chat	-	-	-	-	-	-	-	-
Coffee	-	-	-	-	-	-	-	-
Tea	-	-	-	-	-	-	-	-
Hopes/'Getho'/	-	-	-	-	-	-	-	-
Enset	-	-	-	-	-	-	-	-
Sugar cane	-	-	-	-	-	-	-	-
Cotton	-	-	-	-	-	-	-	-
Other permanent crops	-	-	0.32	0.25	-	-	2.10	1.80

Table 3.6: Estimate of farm input applied cropland area and quantity of input used by crop and input types for commercial farms, 2006 E.C (2013/14) Meher Main Season Benshangul-Gumuz Region

Type of crop	Chemical Fertilizer Applied				Seed Type			
	UREA		DAP		Improved Seed		Indigenous Seed	
	Area in Ha	Amount in Qts	Area in Ha	Amount in Qts	Area in Ha	Amount in Qts	Area in Ha	Amount in Qts
Total	6,542.90	6,576.33	6,482.12	6,174.35	11,755.87	3,387.52	57,856.96	10,024.24
Grains	6,417.65	6,496.57	6,363.70	6,122.47	9,895.21	3,080.52	54,389.55	9,524.59
Cereals	5,686.60	6,416.49	5,739.43	5,714.85	6,888.79	1,641.40	14,468.97	2,380.66
Teff	-	-	-	-	1.18	0.3	15.31	5.79
Barley	-	-	-	-	-	-	-	-
Wheat	-	-	-	-	60.97	4.44	504.53	186.11
Maize	5,315.34	6,394.16	5,618.09	5,648.88	6,509.25	1,277.53	1,935.77	321.6
Sorghum	371.26	22.33	75.71	36.45	158.18	217.82	11,846.29	1,680.15
Finger millet	-	-	-	-	-	-	6.88	1.55
Oats/Aja'	-	-	-	-	-	-	-	-
Rice	-	-	45.63	29.52	159.2	141.32	160.18	185.47
Pulse	111.99	39.78	569.13	392.62	1,602.44	1,366.75	7,394.31	5,335.69
Horse/Paha beans	-	-	-	-	-	-	23.31	16.65
Field peas	-	-	-	-	-	-	-	-
Haricot beans	-	-	-	-	6.73	5.85	192.87	110.96
Chick peas	-	-	-	-	-	-	246.62	140.89
Lentils	-	-	-	-	-	-	-	-
Vetch/Grass peas	-	-	-	-	-	-	-	-
Soya beans	111.99	39.78	569.13	392.62	1,595.71	1,360.89	6,931.51	5,087.20
Fenugreek	-	-	-	-	-	-	-	-
Gibto	-	-	-	-	-	-	-	-
Oil seeds	619.06	40.3	55.14	15	1,403.98	72.37	32,526.27	1,888.24
Nuug	-	-	-	-	-	-	33.2	1.94
Linseed	-	-	-	-	0.4	0.02	13.6	1.5
Ground nuts	-	-	-	-	24.34	16.1	282.76	109.61
Safflower	-	-	-	-	-	-	-	-
Sesame	619.06	40.3	55.14	15	1,379.24	56.25	32,196.71	1,775.19
Rapeseed	-	-	-	-	-	-	-	-
Vegetables	97.71	52.85	90.44	43.88	0.74	0.5	1,522.28	101.63
Lettuce	-	-	-	-	-	-	-	-
Head Cabbage	-	-	-	-	-	-	-	-
Ethiopian Cabbage	-	-	-	-	-	-	-	-
Tomatoes	-	-	-	-	-	-	-	-
Green peppers	-	-	-	-	-	-	-	-
Red papers	97.71	52.85	90.44	43.88	0.74	0.5	1,522.28	101.63
Swiss chard	-	-	-	-	-	-	-	-
Root crops	-	-	-	-	-	-	27.33	5.5
Beet root	-	-	-	-	-	-	-	-
Carrot	-	-	-	-	-	-	-	-
Onion	-	-	-	-	-	-	27.33	5.5
Potatoes	-	-	-	-	-	-	-	-
Garlic	-	-	-	-	-	-	-	-
Taro/Godere'	-	-	-	-	-	-	-	-
Sweet potatoes	-	-	-	-	-	-	-	-
Other Temporary	-	-	-	-	0.94	0.03	2.3	1.4
Permanent crops	27.54	26.91	7.98	8	1,858.98	306.47	1,915.50	291.12
Fruit crops	-	-	-	-	-	-	1.2	-
Avocado	-	-	-	-	-	-	-	-
Bananas	-	-	-	-	-	-	0.25	-
Guava/Zeytun'	-	-	-	-	-	-	0.94	-
Lemons	-	-	-	-	-	-	-	-
Mangos	-	-	-	-	-	-	0.01	-
Oranges	-	-	-	-	-	-	-	-
Papayas	-	-	-	-	-	-	-	-
Pineapples	-	-	-	-	-	-	-	-
Cash crops	27.54	26.91	7.98	8	1,858.98	306.47	1,911.19	290.07
Chat	-	-	-	-	-	-	-	-
Coffee	-	-	-	-	0.8	-	-	-
Tea	-	-	-	-	-	-	-	-
Hopes/Gesho'	-	-	-	-	-	-	-	-
Enset	-	-	-	-	-	-	-	-
Sugar cane	-	-	-	-	-	-	-	-
Cotton	27.54	26.91	7.98	8	1,858.18	306.47	1,911.19	290.07
Other permanent crops	-	-	-	-	-	-	3.11	1.05

Table 3.7: Estimate of farm input applied cropland area and quantity of input used by crop and input types for commercial farms, 2006 E.C (2013/14) SNNP Region

Type of crop	Chemical Fertilizer Applied				Seed Type			
	UREA		DAP		Improved Seed		Indigenous Seed	
	Area in Ha	Amount in Qts	Area in Ha	Amount in Qts	Area in Ha	Amount in Qts	Area in Ha	Amount in Qts
Total	38,379.31	48,837.50	41,448.11	53,144.84	36,360.24	40,377.17	16,599.33	15,422.18
Grains	28,308.96	29,135.74	31,411.94	34,642.37	33,058.06	34,303.49	11,464.68	8,800.40
Cereals	27,531.73	27,293.88	27,360.63	31,135.62	29,985.39	31,822.57	6,368.70	5,457.15
Teff	4,044.94	3,474.48	4,818.68	5,133.65	4,375.15	2,755.57	1,532.46	1,237.50
Barley	162.22	127.71	170.87	154.02	4.58	58.96	126.29	118.25
Wheat	5,837.20	3,842.66	4,839.13	5,127.51	4,397.66	13,254.99	778.49	1,641.41
Maize	16,794.39	19,124.11	17,174.65	20,041.75	20,456.21	15,453.39	2,277.76	1,253.22
Sorghum	358	259.13	466	368.41	341.69	55.49	728.02	340.28
Finger millet	-	-	-	-	14.02	17.52	-	-
Oats/Aja'	-	-	-	-	-	-	-	-
Rice	334.97	465.9	391.31	309.27	356.11	226.66	525.68	866.5
Pulse	475.4	400.94	3,149.48	2,056.47	2,761.95	2,439.85	3,184.29	3,063.02
Horse/Faba beans	-	-	-	-	-	-	-	-
Field peas	55.25	94.6	55.25	113.52	55.25	227.04	-	-
Haricot beans	-	-	1,731.92	830.7	1,486.79	766.57	721.21	544.94
Chick peas	354.19	286.94	1,135.09	990.58	1,122.86	1,366.73	2,320.21	2,419.98
Lentils	-	-	-	-	-	-	-	-
Vetch/Grass peas	65.96	19.4	65.96	19.4	-	-	65.96	38.8
Soya beans	-	-	161.26	102.27	97.06	79.51	76.92	59.3
Fenugreek	-	-	-	-	-	-	-	-
Gibto	-	-	-	-	-	-	-	-
Oil seeds	301.83	1,440.82	301.83	1,450.28	310.72	41.07	1,911.69	280.23
Nueg	87.15	1,204.40	87.15	1,204.40	68.11	9.12	140	58.07
Unseed	15.7	18.92	15.7	28.38	-	-	17.6	19.87
Ground nuts	-	-	-	-	-	-	-	-
Safflower	-	-	-	-	-	-	-	-
Sesame	198.98	217.5	198.98	217.5	242.61	31.95	1,754.08	202.29
Rapeseed	-	-	-	-	-	-	-	-
Vegetables	1,868.71	2,548.56	1,840.47	1,837.78	889.26	240.42	1,522.88	1,279.35
Lettuce	-	-	-	-	-	-	-	-
Head Cabbage	48.72	481.12	9.94	14.02	39.28	175.26	1	0.03
Ethiopian Cabbage	0.11	0.05	-	-	0.11	0.03	-	-
Tomatoes	158.79	283.09	158.79	254.71	129.19	0.2	33.29	32.32
Green peppers	2.93	2.84	2.93	0.03	16.58	12	-	-
Red papers	1,558.17	1,781.47	1,668.81	1,569.02	704.11	52.93	1,487.84	1,246.96
Swiss chard	-	-	-	-	-	-	0.75	0.04
Root crops	86.99	106.78	163.56	228.59	108.02	66.7	90.53	774.03
Beet root	-	-	-	-	-	-	-	-
Carrot	-	-	-	-	-	-	0.5	0.02
Onion	45.93	87.86	116.51	187.75	96.78	15.6	2.46	2.85
Potatoes	41.06	18.92	47.06	40.84	-	-	87.57	771.16
Garlic	-	-	-	-	-	-	-	-
Taro/Godere'	-	-	-	-	-	-	-	-
Sweet potatoes	-	-	-	-	11.24	51.1	-	-
Other Temporary	276.52	445.78	198.9	3,279.17	699.72	4,732.56	248.41	3,827.86
Permanent crops	7,838.13	16,600.64	7,833.24	13,156.93	1,605.18	1,034.00	3,272.83	740.54
Fruit crops	20.65	51.63	20.65	31.15	-	-	-	-
Avocado	-	-	-	-	-	-	-	-
Bananas	-	-	-	-	-	-	-	-
Guava/Teytun'	-	-	-	-	-	-	-	-
Lemons	-	-	-	-	-	-	-	-
Mangos	20.65	51.63	20.65	31.15	-	-	-	-
Oranges	-	-	-	-	-	-	-	-
Papayas	-	-	-	-	-	-	-	-
Pineapples	-	-	-	-	-	-	-	-
Cash crops	7,252.80	16,139.44	7,237.50	12,613.44	412.93	62.1	3,003.21	566.78
Chat	-	-	-	-	-	-	-	-
Coffee	6,736.88	15,590.24	6,721.58	12,270.27	-	-	-	-
Tea	274.78	311.41	274.78	105.38	-	-	-	-
Hopes/Gesho'	-	-	-	-	-	-	-	-
Enset	-	-	-	-	-	-	-	-
Sugar cane	-	-	-	-	-	-	-	-
Cotton	241.15	237.79	241.15	237.79	412.93	62.1	3,003.21	566.78
Other permanent crops	564.68	409.57	575.09	512.34	1,192.25	971.9	269.62	173.76

Table 3.7 contd
SNNP Region

Type of crop	Pesticides		Fungicides		Herbicides		Other	
	Area in Ha	Amnt in Qts	Area in Ha	Amnt in Qts	Area in Ha	Amnt in Qts	Area in Ha	Amnt in Qts
Total	9,506.65	1,362.58	1,775.40	759.7	36,797.56	1,703.05	3,084.47	3,065.06
Grains	5,691.75	1,101.48	851.89	29.7	18,610.52	340.45	712.32	270.68
Cereals	4,262.99	1,087.35	796.64	12.6	18,372.75	338.21	553.39	270.2
Teff	104.31	3.1	-	-	2,361.90	23.22	-	-
Barley	-	-	-	-	44.58	35.16	-	-
Wheat	-	-	205.64	0.6	4,689.10	42.29	-	-
Maize	4,129.66	1,077.32	591	12	10,294.38	218.97	553.39	270.2
Sorghum	2.5	0.3	-	-	439.22	6.62	-	-
Finger millet	26.52	6.63	-	-	26.52	0.14	-	-
Oats/Aja'	-	-	-	-	-	-	-	-
Rice	-	-	-	-	517.06	11.82	-	-
Pulse	1,273.09	11.13	55.25	17.1	203.37	1.9	55.25	0.48
Horse/Faba beans	-	-	-	-	-	-	-	-
Field peas	55.25	0.67	55.25	17.1	-	-	55.25	0.48
Haricot beans	-	-	-	-	129.6	1.17	-	-
Chick peas	1,217.84	10.46	-	-	7.55	0.1	-	-
Lentiles	-	-	-	-	-	-	-	-
Vetch/Grass peas	-	-	-	-	-	-	-	-
Soya beans	-	-	-	-	66.22	0.63	-	-
Fenugreek	-	-	-	-	-	-	-	-
Gibbo	-	-	-	-	-	-	-	-
Oil seeds	155.67	3	-	-	34.4	0.34	103.68	-
Nueg	-	-	-	-	34.4	0.34	-	-
Linseed	-	-	-	-	-	-	-	-
Ground nuts	-	-	-	-	-	-	-	-
Safflower	-	-	-	-	-	-	-	-
Sesame	155.67	3	-	-	-	-	103.68	-
Rapeseed	-	-	-	-	-	-	-	-
Vegetables	357.7	12.06	119.94	5.03	67	0.31	439.83	437.96
Lettuce	-	-	-	-	-	-	-	-
Head Cabbage	43.04	4.96	0.5	0.01	3.86	0.06	10.19	-
Ethiopian Cabbage	-	-	-	-	-	-	-	-
Tomatoes	207.74	5.19	119.44	5.02	62.2	0.23	415.74	437.96
Green peppers	13.17	0.27	-	-	-	-	2.93	-
Red papers	93.76	1.64	-	-	0.94	0.02	10.96	-
Swiss chard	-	-	-	-	-	-	-	-
Root crops	148.91	12.37	94.77	4.48	13.18	8.24	178.58	440.83
Beet root	-	-	-	-	-	-	-	-
Carrot	-	-	-	-	-	-	-	-
Onion	148.91	12.37	94.77	4.48	8.53	0.45	174.8	440.81
Potatoes	-	-	-	-	-	-	3.78	0.02
Garlic	-	-	-	-	-	-	-	-
Taro/Godere'	-	-	-	-	-	-	-	-
Sweet potatoes	-	-	-	-	4.65	7.75	-	-
Other Temporary	201.5	36.07	451.24	714.63	403.5	36.08	324.66	533.95
Permanent crops	3,106.79	200.6	257.56	5.86	17,703.36	1,317.97	1,429.08	1,381.64
Fruit crops	19.5	0.05	9.81	0.81	-	-	54.92	-
Avocado	-	-	-	-	-	-	-	-
Bananas	-	-	9.03	0.03	-	-	54.92	-
Guava/Leytun'	-	-	-	-	-	-	-	-
Lemons	-	-	-	-	-	-	-	-
Mangos	-	-	-	-	-	-	-	-
Oranges	-	-	-	-	-	-	-	-
Papayas	19.5	0.05	0.78	0.78	-	-	-	-
Pineapples	-	-	-	-	-	-	-	-
Cash crops	2,957.05	200.15	247.75	5.05	17,692.51	1,295.65	1,277.67	946.48
Chat	-	-	-	-	-	-	-	-
Coffee	-	-	247.75	5.05	17,035.10	1,293.17	479.43	51.08
Tea	-	-	-	-	274.78	-	549.56	895.4
Hopes/Gesho'	-	-	-	-	-	-	-	-
Enset	-	-	-	-	-	-	-	-
Sugar cane	-	-	-	-	-	-	7.54	-
Cotton	2,957.05	200.15	-	-	382.62	2.48	241.15	-
Other permanent crops	130.24	0.4	-	-	10.85	22.32	96.49	435.16

Table 3.8: Estimate of farm input applied cropland area and quantity of input used by crop and input types for commercial farms, 2006 E.C (2013/14)
Gambella Region

Type of crop	UREA		DAP		Improved Seed		Indigenous Seed	
	Area in Ha	Amnt in Qts	Area in Ha	Amnt in Qts	Area in Ha	Amnt in Qts	Area in Ha	Amnt in Qts
Total	1,504.22	1,662.52	1,551.80	1,601.77	2,159.02	622.68	6,647.28	1,898.65
Grains	1,154.53	1,239.02	1,254.18	1,101.09	1,596.14	556.39	4,348.68	1,407.15
Cereals	1,154.53	1,239.02	1,145.98	1,073.25	1,307.65	444.59	3,244.41	1,143.38
Teff	-	-	-	-	-	-	-	-
Barley	-	-	-	-	-	-	-	-
Wheat	-	-	-	-	53.15	11.16	172.57	24.17
Maize	840.3	1,054.22	831.75	857.65	922.38	223.93	2,231.11	888.12
Sorghum	-	-	-	-	17.89	5.5	386.01	53.47
Finger millet	-	-	-	-	-	-	0.85	0.1
Oats/'Aja'	-	-	-	-	-	-	-	-
Rice	314.23	184.8	314.23	215.6	314.23	204	453.88	177.52
Pulse	-	-	108.2	27.84	225.69	84.8	377.24	141.6
Horse/Faba beans	-	-	-	-	-	-	-	-
Field peas	-	-	-	-	-	-	-	-
Haricot beans	-	-	-	-	-	-	10.2	-
Chick peas	-	-	-	-	-	-	-	-
Lentils	-	-	-	-	-	-	-	-
Vetch/Grass peas	-	-	-	-	-	-	-	-
Soya beans	-	-	108.2	27.84	225.69	84.8	367.04	141.6
Fenugreek	-	-	-	-	-	-	-	-
Gibto	-	-	-	-	-	-	-	-
Oil seeds	-	-	-	-	62.8	27	727.03	122.17
Nueg	-	-	-	-	-	-	-	-
Linseed	-	-	-	-	-	-	-	-
Ground nuts	-	-	-	-	62.8	27	71.91	57.38
Safflower	-	-	-	-	-	-	-	-
Sesame	-	-	-	-	-	-	655.12	64.79
Rapeseed	-	-	-	-	-	-	-	-
Vegetables	-	-	-	-	11	0.05	15.64	0.34
Lettuce	-	-	-	-	-	-	-	-
Head Cabbage	-	-	-	-	-	-	-	-
Ethiopian Cabbage	-	-	-	-	-	-	-	-
Tomatoes	-	-	-	-	11	0.05	3.74	0.04
Green peppers	-	-	-	-	-	-	-	-
Red papers	-	-	-	-	-	-	11.9	0.3
Swiss chard	-	-	-	-	-	-	-	-
Root crops	-	-	-	-	-	-	-	-
Beet root	-	-	-	-	-	-	-	-
Carrot	-	-	-	-	-	-	-	-
Onion	-	-	-	-	-	-	-	-
Potatoes	-	-	-	-	-	-	-	-
Garlic	-	-	-	-	-	-	-	-
Taro/'Godere'/	-	-	-	-	-	-	-	-
Sweet potatoes	-	-	-	-	-	-	-	-
Other Temporary	-	-	-	-	-	-	-	-
Permanent crops	349.69	423.5	297.62	500.68	551.88	66.24	2,282.96	491.16
Fruit crops	-	-	-	-	30.6	10.2	-	-
Avocado	-	-	-	-	-	-	-	-
Bananas	-	-	-	-	-	-	-	-
Guava/'Zeytun'/	-	-	-	-	-	-	-	-
Lemons	-	-	-	-	-	-	-	-
Mangos	-	-	-	-	30.6	10.2	-	-
Oranges	-	-	-	-	-	-	-	-
Papayas	-	-	-	-	-	-	-	-
Pineapples	-	-	-	-	-	-	-	-
Cash crops	349.69	423.5	297.62	500.68	521.28	56.04	2,282.96	491.16
Chat	-	-	-	-	-	-	-	-
Coffee	349.69	423.5	220.44	423.5	-	-	-	-
Tea	-	-	-	-	-	-	-	-
Hopes/'Gesho'/	-	-	-	-	-	-	-	-
Enset	-	-	-	-	-	-	-	-
Sugar cane	-	-	-	-	-	-	-	-
Cotton	-	-	77.18	77.18	521.28	56.04	2,282.96	491.16
Other permanent crops	-	-	-	-	-	-	-	-

TABLE 3.8 contd
Gambella Region

Type of crop	Pesticides		Fungicides		Herbicides		Other	
	Area in Ha	Amnt in Qts	Area in Ha	Amnt in Qts	Area in Ha	Amnt in Qts	Area in Ha	Amnt in Qts
Total	3,586.74	822.68	-	-	3,392.02	38.44	550.72	19.21
Grains	1,093.38	624.72	-	-	1,393.36	37.84	86.36	0.81
Cereals	762.71	618.47	-	-	1,315.00	37.37	38.42	0.31
Teff	-	-	-	-	-	-	-	-
Barley	-	-	-	-	-	-	-	-
Wheat	83.7	1.62	-	-	43.55	0.07	18.87	0.06
Maize	50.55	0.45	-	-	1,271.45	37.3	19.55	0.25
Sorghum	-	-	-	-	-	-	-	-
Finger millet	-	-	-	-	-	-	-	-
Oats/Aja'	-	-	-	-	-	-	-	-
Rice	628.46	616.4	-	-	-	-	-	-
Pulse	166	0.05	-	-	69.36	0.32	47.94	0.3
Horse/Faba beans	-	-	-	-	-	-	-	-
Field peas	-	-	-	-	-	-	-	-
Haricot beans	-	-	-	-	-	-	-	-
Chick peas	-	-	-	-	-	-	-	-
Lentiles	-	-	-	-	-	-	-	-
Vetch/Grass peas	-	-	-	-	-	-	-	-
Soya beans	166	0.05	-	-	69.36	0.32	47.94	0.3
Fenugreek	-	-	-	-	-	-	-	-
Gilto	-	-	-	-	-	-	-	-
Dile seeds	164.67	6.2	-	-	9	0.15	-	-
Nueg	-	-	-	-	-	-	-	-
Unseed	-	-	-	-	-	-	-	-
Ground nuts	1.64	-	-	-	-	-	-	-
Safflower	-	-	-	-	-	-	-	-
Sesame	163.03	6.2	-	-	9	0.15	-	-
Rapeseed	-	-	-	-	-	-	-	-
Vegetables	36.4	0.71	-	-	-	-	-	-
Lettuce	-	-	-	-	-	-	-	-
Head Cabbage	-	-	-	-	-	-	-	-
Ethiopian Cabbage	-	-	-	-	-	-	-	-
Tomatoes	34.7	0.68	-	-	-	-	-	-
Green peppers	-	-	-	-	-	-	-	-
Red papers	1.7	0.03	-	-	-	-	-	-
Swiss chard	-	-	-	-	-	-	-	-
Root crops	-	-	-	-	-	-	-	-
Beet root	-	-	-	-	-	-	-	-
Carrot	-	-	-	-	-	-	-	-
Onion	-	-	-	-	-	-	-	-
Potatoes	-	-	-	-	-	-	-	-
Garlic	-	-	-	-	-	-	-	-
Taro/Gudere'	-	-	-	-	-	-	-	-
Sweet potatoes	-	-	-	-	-	-	-	-
Other Temporary	-	-	-	-	-	-	-	-
Permanent crops	2,456.96	197.25	-	-	1,988.66	0.6	464.36	18.6
Fruit crops	-	-	-	-	-	-	-	-
Avocado	-	-	-	-	-	-	-	-
Bananas	-	-	-	-	-	-	-	-
Guava/Zeytun'	-	-	-	-	-	-	-	-
Lemons	-	-	-	-	-	-	-	-
Mangos	-	-	-	-	-	-	-	-
Oranges	-	-	-	-	-	-	-	-
Papayas	-	-	-	-	-	-	-	-
Pineapples	-	-	-	-	-	-	-	-
Cash crops	2,456.96	197.25	-	-	1,988.66	0.6	464.36	18.6
Chat	-	-	-	-	-	-	-	-
Coffee	-	-	-	-	1,978.46	-	-	-
Tea	-	-	-	-	10.2	0.6	-	-
Hopes/Gesho'	-	-	-	-	-	-	-	-
Enset	-	-	-	-	-	-	-	-
Sugar cane	-	-	-	-	-	-	-	-
Cotton	2,456.96	197.25	-	-	-	-	464.36	18.6
Other permanent crops	-	-	-	-	-	-	-	-

Table 3.9: Estimate of farm input applied cropland area and quantity of input used by crop and input types for commercial farms, 2006 E.C (2014) Dire Dawa Region

Type of crop	Chemical Fertilizer Applied				Seed type			
	UREA		DAP		Improved Seed		Indigenous Seed	
	Area in Ha	Amnt in Qts	Area in Ha	Amnt in Qts	Area in Ha	Amnt in Qts	Area in Ha	Amnt in Qts
Total	0.68	3.5	-	-	0.3	0.03	-	-
Grains	-	-	-	-	-	-	-	-
Cereals	-	-	-	-	-	-	-	-
Teff	-	-	-	-	-	-	-	-
Barley	-	-	-	-	-	-	-	-
Wheat	-	-	-	-	-	-	-	-
Maize	-	-	-	-	-	-	-	-
Sorghum	-	-	-	-	-	-	-	-
Finger millet	-	-	-	-	-	-	-	-
Oats/Aja/	-	-	-	-	-	-	-	-
Rice	-	-	-	-	-	-	-	-
Pulse	-	-	-	-	-	-	-	-
Horse/Faba beans	-	-	-	-	-	-	-	-
Field peas	-	-	-	-	-	-	-	-
Haricot beans	-	-	-	-	-	-	-	-
Chick peas	-	-	-	-	-	-	-	-
Lentils	-	-	-	-	-	-	-	-
Vetch/Grass peas	-	-	-	-	-	-	-	-
Soya beans	-	-	-	-	-	-	-	-
Fenugreek	-	-	-	-	-	-	-	-
Gibto	-	-	-	-	-	-	-	-
Oil seeds	-	-	-	-	-	-	-	-
Nuag	-	-	-	-	-	-	-	-
Linseed	-	-	-	-	-	-	-	-
Ground nuts	-	-	-	-	-	-	-	-
Safflower	-	-	-	-	-	-	-	-
Sesame	-	-	-	-	-	-	-	-
Rapeseed	-	-	-	-	-	-	-	-
Vegetables	0.19	0.25	-	-	0.25	0.02	-	-
Lettuce	-	-	-	-	-	-	-	-
Head Cabbage	-	-	-	-	-	-	-	-
Ethiopian Cabbage	-	-	-	-	-	-	-	-
Tomatoes	0.12	0.15	-	-	0.12	0.01	-	-
Green peppers	0.07	0.1	-	-	0.07	0.01	-	-
Red papers	-	-	-	-	-	-	-	-
Swiss chard	-	-	-	-	0.06	-	-	-
Root crops	0.05	0.1	-	-	0.05	0.01	-	-
Beet root	-	-	-	-	-	-	-	-
Carrot	-	-	-	-	-	-	-	-
Onion	0.05	0.1	-	-	0.05	0.01	-	-
Potatoes	-	-	-	-	-	-	-	-
Garlic	-	-	-	-	-	-	-	-
Taro/Godere/	-	-	-	-	-	-	-	-
Sweet potatoes	-	-	-	-	-	-	-	-
Other Temporary	0.07	0.15	-	-	-	-	-	-
Permanent crops	0.37	3	-	-	-	-	-	-
Fruit crops	0.37	3	-	-	-	-	-	-
Avocado	-	-	-	-	-	-	-	-
Bananas	-	-	-	-	-	-	-	-
Guxva/Zeytun/	-	-	-	-	-	-	-	-
Lemons	-	-	-	-	-	-	-	-
Mangos	-	-	-	-	-	-	-	-
Oranges	0.37	3	-	-	-	-	-	-
Papayas	-	-	-	-	-	-	-	-
Pineapples	-	-	-	-	-	-	-	-
Cash crops	-	-	-	-	-	-	-	-
Chat	-	-	-	-	-	-	-	-
Coffee	-	-	-	-	-	-	-	-
Tea	-	-	-	-	-	-	-	-
Hopes/Gesho/	-	-	-	-	-	-	-	-
Enset	-	-	-	-	-	-	-	-
Sugar cane	-	-	-	-	-	-	-	-
Cotton	-	-	-	-	-	-	-	-
Other permanent crops	-	-	-	-	-	-	-	-

TABLE 3.8 contd
Gambella Region

Type of crop	Pesticides		Fungicides		Herbicides		Other	
	Area in Ha	Amount in Qts	Area in Ha	Amount in Qts	Area in Ha	Amount in Qts	Area in Ha	Amount in Qts
Total	3,586.74	822.68	-	-	3,382.02	38.44	550.72	19.21
Grains	1,093.38	624.72	-	-	1,193.36	37.84	86.36	0.61
Cereals	762.71	618.47	-	-	1,315.00	37.37	38.42	0.31
Teff	-	-	-	-	-	-	-	-
Barley	-	-	-	-	-	-	-	-
Wheat	83.7	1.62	-	-	43.55	0.07	18.87	0.06
Maize	50.55	0.45	-	-	1,271.45	37.3	19.55	0.25
Sorghum	-	-	-	-	-	-	-	-
Finger millet	-	-	-	-	-	-	-	-
Oats/Aju'	-	-	-	-	-	-	-	-
Rice	628.46	616.4	-	-	-	-	-	-
Pulse	166	0.05	-	-	69.36	0.32	47.94	0.3
Horse/Faba beans	-	-	-	-	-	-	-	-
Field peas	-	-	-	-	-	-	-	-
Haricot beans	-	-	-	-	-	-	-	-
Chick peas	-	-	-	-	-	-	-	-
Lentils	-	-	-	-	-	-	-	-
Vetch/Grass peas	-	-	-	-	-	-	-	-
Soya beans	166	0.05	-	-	69.36	0.32	47.94	0.3
Fenugreek	-	-	-	-	-	-	-	-
Gibto	-	-	-	-	-	-	-	-
Oil seeds	164.67	6.2	-	-	9	0.15	-	-
Nug	-	-	-	-	-	-	-	-
Linseed	-	-	-	-	-	-	-	-
Ground nuts	1.64	-	-	-	-	-	-	-
Safflower	-	-	-	-	-	-	-	-
Sesame	163.03	6.2	-	-	9	0.15	-	-
Rapeseed	-	-	-	-	-	-	-	-
Vegetables	36.4	0.71	-	-	-	-	-	-
Lettuce	-	-	-	-	-	-	-	-
Head Cabbage	-	-	-	-	-	-	-	-
Ethiopian Cabbage	-	-	-	-	-	-	-	-
Tomatoes	34.7	0.68	-	-	-	-	-	-
Green peppers	-	-	-	-	-	-	-	-
Red papers	1.7	0.03	-	-	-	-	-	-
Swiss chard	-	-	-	-	-	-	-	-
Root crops	-	-	-	-	-	-	-	-
Beet root	-	-	-	-	-	-	-	-
Carrot	-	-	-	-	-	-	-	-
Onion	-	-	-	-	-	-	-	-
Potatoes	-	-	-	-	-	-	-	-
Garlic	-	-	-	-	-	-	-	-
Taro/Gudere'	-	-	-	-	-	-	-	-
Sweet potatoes	-	-	-	-	-	-	-	-
Other Temporary	-	-	-	-	-	-	-	-
Permanent crops	2,456.96	197.25	-	-	1,988.66	0.6	464.36	18.6
Fruit crops	-	-	-	-	-	-	-	-
Avocado	-	-	-	-	-	-	-	-
Bananas	-	-	-	-	-	-	-	-
Guava/Zeytun'	-	-	-	-	-	-	-	-
Lemons	-	-	-	-	-	-	-	-
Mangos	-	-	-	-	-	-	-	-
Oranges	-	-	-	-	-	-	-	-
Papayas	-	-	-	-	-	-	-	-
Pineapples	-	-	-	-	-	-	-	-
Cash crops	2,456.96	197.25	-	-	1,988.66	0.6	464.36	18.6
Chat	-	-	-	-	-	-	-	-
Coffee	-	-	-	-	1,978.46	-	-	-
Tea	-	-	-	-	10.2	0.6	-	-
Hopet/Gesho'	-	-	-	-	-	-	-	-
Enset	-	-	-	-	-	-	-	-
Sugar cane	-	-	-	-	-	-	-	-
Cotton	2,456.96	197.25	-	-	-	-	464.36	18.6
Other permanent crops	-	-	-	-	-	-	-	-

Table 3.9: Estimate of farm input applied cropland area and quantity of input used by crop and input types for commercial farms, 2006 E.C (201/14) Dire Dawa Region

Type of crop	Chemical Fertilizer Applied				Seed type			
	UREA		DAP		Improved Seed		Indigenous Seed	
	Area in Ha	Amnt in Qts	Area in Ha	Amnt in Qts	Area in Ha	Amnt in Qts	Area in Ha	Amnt in Qts
Total	0.08	3.5	-	-	0.3	0.03	-	-
Grains	-	-	-	-	-	-	-	-
Cereals	-	-	-	-	-	-	-	-
Teff	-	-	-	-	-	-	-	-
Barley	-	-	-	-	-	-	-	-
Wheat	-	-	-	-	-	-	-	-
Maize	-	-	-	-	-	-	-	-
Sorghum	-	-	-	-	-	-	-	-
Finger millet	-	-	-	-	-	-	-	-
Oats/Aja'	-	-	-	-	-	-	-	-
Rice	-	-	-	-	-	-	-	-
Pulse	-	-	-	-	-	-	-	-
Horse/Vaha beans	-	-	-	-	-	-	-	-
Field peas	-	-	-	-	-	-	-	-
Haricot beans	-	-	-	-	-	-	-	-
Chick peas	-	-	-	-	-	-	-	-
Lentils	-	-	-	-	-	-	-	-
Vetch/Grass peas	-	-	-	-	-	-	-	-
Soya beans	-	-	-	-	-	-	-	-
Fenugreek	-	-	-	-	-	-	-	-
Gibto	-	-	-	-	-	-	-	-
Olla seeds	-	-	-	-	-	-	-	-
Nueg	-	-	-	-	-	-	-	-
Linseed	-	-	-	-	-	-	-	-
Ground nuts	-	-	-	-	-	-	-	-
Safflower	-	-	-	-	-	-	-	-
Sesame	-	-	-	-	-	-	-	-
Rapeseed	-	-	-	-	-	-	-	-
Vegetables	0.19	0.25	-	-	0.25	0.02	-	-
Lettuce	-	-	-	-	-	-	-	-
Head Cabbage	-	-	-	-	-	-	-	-
Ethiopian Cabbage	-	-	-	-	-	-	-	-
Tomatoes	0.12	0.15	-	-	0.12	0.01	-	-
Green peppers	0.07	0.1	-	-	0.07	0.01	-	-
Red papers	-	-	-	-	-	-	-	-
Swiss chard	-	-	-	-	0.06	-	-	-
Root crops	0.05	0.1	-	-	0.05	0.01	-	-
Beet root	-	-	-	-	-	-	-	-
Carrot	-	-	-	-	-	-	-	-
Onion	0.05	0.1	-	-	0.05	0.01	-	-
Potatoes	-	-	-	-	-	-	-	-
Garlic	-	-	-	-	-	-	-	-
Taro/Godere'	-	-	-	-	-	-	-	-
Sweet potatoes	-	-	-	-	-	-	-	-
Other Temporary	0.07	0.15	-	-	-	-	-	-
Permanent crops	0.37	3	-	-	-	-	-	-
Fruit crops	0.37	3	-	-	-	-	-	-
Avocado	-	-	-	-	-	-	-	-
Bananas	-	-	-	-	-	-	-	-
Guava/Zeytun'	-	-	-	-	-	-	-	-
Lemons	-	-	-	-	-	-	-	-
Mangos	-	-	-	-	-	-	-	-
Oranges	0.37	3	-	-	-	-	-	-
Papayas	-	-	-	-	-	-	-	-
Pineapples	-	-	-	-	-	-	-	-
Cash crops	-	-	-	-	-	-	-	-
Chat	-	-	-	-	-	-	-	-
Coffee	-	-	-	-	-	-	-	-
Tea	-	-	-	-	-	-	-	-
Hopes/Gesho'	-	-	-	-	-	-	-	-
Enset	-	-	-	-	-	-	-	-
Sugar cane	-	-	-	-	-	-	-	-
Cotton	-	-	-	-	-	-	-	-
Other permanent crops	-	-	-	-	-	-	-	-

TABLE 3.8 contd
Gambella Region

Type of crop	Pesticides		Fungicides		Herbicides		Other	
	Area in Ha	Amount in Qts	Area in Ha	Amount in Qts	Area in Ha	Amount in Qts	Area in Ha	Amount in Qts
Total	3,586.74	822.68	-	-	3,382.02	38.44	550.72	19.21
Grains	1,093.38	624.72	-	-	1,393.36	37.84	86.36	0.81
Cereals	762.72	618.47	-	-	1,315.00	37.37	38.42	0.31
Teff	-	-	-	-	-	-	-	-
Barley	-	-	-	-	-	-	-	-
Wheat	83.7	1.62	-	-	43.55	0.07	18.87	0.06
Maize	50.55	0.45	-	-	1,271.45	37.3	19.55	0.25
Sorghum	-	-	-	-	-	-	-	-
Finger millet	-	-	-	-	-	-	-	-
Oats/Aja'	-	-	-	-	-	-	-	-
Rice	628.46	616.4	-	-	-	-	-	-
Pulse	166	0.05	-	-	69.56	0.32	47.94	0.3
Horse/Taba beans	-	-	-	-	-	-	-	-
Field peas	-	-	-	-	-	-	-	-
Haricot beans	-	-	-	-	-	-	-	-
Chick peas	-	-	-	-	-	-	-	-
Lentils	-	-	-	-	-	-	-	-
Vetch/Grass peas	-	-	-	-	-	-	-	-
Soya beans	166	0.05	-	-	69.36	0.32	47.94	0.3
Fenugreek	-	-	-	-	-	-	-	-
Gibto	-	-	-	-	-	-	-	-
Oil seeds	164.67	6.2	-	-	9	0.15	-	-
Nueg	-	-	-	-	-	-	-	-
Linseed	-	-	-	-	-	-	-	-
Ground nuts	1.64	-	-	-	-	-	-	-
Safflower	-	-	-	-	-	-	-	-
Sesame	163.03	6.2	-	-	9	0.15	-	-
Rapeseed	-	-	-	-	-	-	-	-
Vegetables	36.4	0.71	-	-	-	-	-	-
Lettuce	-	-	-	-	-	-	-	-
Head Cabbage	-	-	-	-	-	-	-	-
Ethiopian Cabbage	-	-	-	-	-	-	-	-
Tomatoes	34.7	0.68	-	-	-	-	-	-
Green peppers	-	-	-	-	-	-	-	-
Red papers	1.7	0.03	-	-	-	-	-	-
Swiss chard	-	-	-	-	-	-	-	-
Root crops	-	-	-	-	-	-	-	-
Beet root	-	-	-	-	-	-	-	-
Carrot	-	-	-	-	-	-	-	-
Onion	-	-	-	-	-	-	-	-
Potatoes	-	-	-	-	-	-	-	-
Garlic	-	-	-	-	-	-	-	-
Taro/Godere'	-	-	-	-	-	-	-	-
Sweet potatoes	-	-	-	-	-	-	-	-
Other Temporary	-	-	-	-	-	-	-	-
Permanent crops	2,456.96	197.25	-	-	1,988.66	0.6	464.36	18.6
Fruit crops	-	-	-	-	-	-	-	-
Avocado	-	-	-	-	-	-	-	-
Bananas	-	-	-	-	-	-	-	-
Guava/Zeytun'	-	-	-	-	-	-	-	-
Lemons	-	-	-	-	-	-	-	-
Mangos	-	-	-	-	-	-	-	-
Oranges	-	-	-	-	-	-	-	-
Papayas	-	-	-	-	-	-	-	-
Pineapples	-	-	-	-	-	-	-	-
Cash crops	2,456.96	197.25	-	-	1,988.66	0.6	464.36	18.6
Chat	-	-	-	-	-	-	-	-
Coffee	-	-	-	-	1,978.46	-	-	-
Tea	-	-	-	-	10.2	0.6	-	-
Hopes/Gesho'	-	-	-	-	-	-	-	-
Enset	-	-	-	-	-	-	-	-
Sugar cane	-	-	-	-	-	-	-	-
Cotton	2,456.96	197.25	-	-	-	-	464.36	18.6
Other permanent crops	-	-	-	-	-	-	-	-

Table 3.9: Estimate of farm input applied cropland area and quantity of input used by crop and input types for commercial farms, 2006 E.C. (201-14) Dire Dawa Region

Type of crop	Chemical Fertilizer Applied				Seed type			
	UREA		DAP		Improved Seed		Indigenous Seed	
	Area in Ha	Amount in Qts	Area in Ha	Amount in Qts	Area in Ha	Amount in Qts	Area in Ha	Amount in Qts
Total	0.68	8.5	-	-	0.3	0.01	-	-
Grains	-	-	-	-	-	-	-	-
Cereals	-	-	-	-	-	-	-	-
Teff	-	-	-	-	-	-	-	-
Barley	-	-	-	-	-	-	-	-
Wheat	-	-	-	-	-	-	-	-
Maize	-	-	-	-	-	-	-	-
Sorghum	-	-	-	-	-	-	-	-
Finger millet	-	-	-	-	-	-	-	-
Oats/Aja/	-	-	-	-	-	-	-	-
Rice	-	-	-	-	-	-	-	-
Pulse	-	-	-	-	-	-	-	-
Horse/Vaha beans	-	-	-	-	-	-	-	-
Field peas	-	-	-	-	-	-	-	-
Haricot beans	-	-	-	-	-	-	-	-
Chick peas	-	-	-	-	-	-	-	-
Lentils	-	-	-	-	-	-	-	-
Vetch/Grass peas	-	-	-	-	-	-	-	-
Soya beans	-	-	-	-	-	-	-	-
Fenugreek	-	-	-	-	-	-	-	-
Gibto	-	-	-	-	-	-	-	-
Oil seeds	-	-	-	-	-	-	-	-
Noug	-	-	-	-	-	-	-	-
Linseed	-	-	-	-	-	-	-	-
Ground nuts	-	-	-	-	-	-	-	-
Safflower	-	-	-	-	-	-	-	-
Sesame	-	-	-	-	-	-	-	-
Rapeseed	-	-	-	-	-	-	-	-
Vegetables	0.19	0.25	-	-	0.25	0.02	-	-
Lettuce	-	-	-	-	-	-	-	-
Head Cabbage	-	-	-	-	-	-	-	-
Ethiopian Cabbage	-	-	-	-	-	-	-	-
Tomatoes	0.12	0.15	-	-	0.12	0.01	-	-
Green peppers	0.07	0.1	-	-	0.07	0.01	-	-
Red papers	-	-	-	-	-	-	-	-
Swiss chard	-	-	-	-	0.06	-	-	-
Root crops	0.05	0.1	-	-	0.05	0.01	-	-
Beet root	-	-	-	-	-	-	-	-
Carrot	-	-	-	-	-	-	-	-
Onion	0.05	0.1	-	-	0.05	0.01	-	-
Potatoes	-	-	-	-	-	-	-	-
Garlic	-	-	-	-	-	-	-	-
Taro/Godere/	-	-	-	-	-	-	-	-
Sweet potatoes	-	-	-	-	-	-	-	-
Other Temporary	0.07	0.15	-	-	-	-	-	-
Permanent crops	0.37	3	-	-	-	-	-	-
Fruit crops	0.37	3	-	-	-	-	-	-
Avocado	-	-	-	-	-	-	-	-
Bananas	-	-	-	-	-	-	-	-
Guava/Zeytun/	-	-	-	-	-	-	-	-
Lemons	-	-	-	-	-	-	-	-
Mangos	-	-	-	-	-	-	-	-
Oranges	0.37	3	-	-	-	-	-	-
Papayas	-	-	-	-	-	-	-	-
Pineapples	-	-	-	-	-	-	-	-
Cash crops	-	-	-	-	-	-	-	-
Chat	-	-	-	-	-	-	-	-
Coffee	-	-	-	-	-	-	-	-
Tea	-	-	-	-	-	-	-	-
Hopes/Gesha/	-	-	-	-	-	-	-	-
Enset	-	-	-	-	-	-	-	-
Sugar cane	-	-	-	-	-	-	-	-
Cotton	-	-	-	-	-	-	-	-
Other permanent crops	-	-	-	-	-	-	-	-

TABLE 3.8 contd
Gambella Region

Type of crop	Pesticides		Fungicides		Herbicides		Other	
	Area in Ha	Amount in Qts	Area in Ha	Amount in Qts	Area in Ha	Amount in Qts	Area in Ha	Amount in Qts
Total	3,586.74	822.68	-	-	3,392.02	38.44	550.72	18.21
Grains	1,093.38	624.72	-	-	1,393.36	37.84	86.36	0.61
Cereals	762.71	618.47	-	-	1,315.00	37.37	38.42	0.31
Teff	-	-	-	-	-	-	-	-
Barley	-	-	-	-	-	-	-	-
Wheat	81.7	1.62	-	-	43.55	0.07	18.87	0.06
Maize	50.55	0.45	-	-	1,271.45	37.3	19.55	0.25
Sorghum	-	-	-	-	-	-	-	-
Finger millet	-	-	-	-	-	-	-	-
Oats/Aje'	-	-	-	-	-	-	-	-
Rice	628.46	616.4	-	-	-	-	-	-
Pulse	166	0.05	-	-	69.36	0.32	47.94	0.3
Horse/Faba beans	-	-	-	-	-	-	-	-
Field peas	-	-	-	-	-	-	-	-
Haricot beans	-	-	-	-	-	-	-	-
Chick peas	-	-	-	-	-	-	-	-
Lentiles	-	-	-	-	-	-	-	-
Vetch/Grass peas	-	-	-	-	-	-	-	-
Soya beans	166	0.05	-	-	69.36	0.32	47.94	0.3
Fenugreek	-	-	-	-	-	-	-	-
Gibto	-	-	-	-	-	-	-	-
Oil seeds	164.67	6.2	-	-	9	0.15	-	-
Nueg	-	-	-	-	-	-	-	-
Linseed	-	-	-	-	-	-	-	-
Ground nuts	1.64	-	-	-	-	-	-	-
Safflower	-	-	-	-	-	-	-	-
Sesame	163.03	6.2	-	-	9	0.15	-	-
Rapeseed	-	-	-	-	-	-	-	-
Vegetables	36.4	0.71	-	-	-	-	-	-
Lettuce	-	-	-	-	-	-	-	-
Head Cabbage	-	-	-	-	-	-	-	-
Ethiopian Cabbage	-	-	-	-	-	-	-	-
Tomatoes	34.7	0.68	-	-	-	-	-	-
Green peppers	-	-	-	-	-	-	-	-
Red papers	1.7	0.03	-	-	-	-	-	-
Swiss chard	-	-	-	-	-	-	-	-
Root crops	-	-	-	-	-	-	-	-
Beet root	-	-	-	-	-	-	-	-
Carrot	-	-	-	-	-	-	-	-
Onion	-	-	-	-	-	-	-	-
Potatoes	-	-	-	-	-	-	-	-
Garlic	-	-	-	-	-	-	-	-
Taro/Gudere'	-	-	-	-	-	-	-	-
Sweet potatoes	-	-	-	-	-	-	-	-
Other Temporary	-	-	-	-	-	-	-	-
Permanent crops	2,456.96	197.25	-	-	1,988.66	0.6	464.36	18.6
Fruit crops	-	-	-	-	-	-	-	-
Avocado	-	-	-	-	-	-	-	-
Bananas	-	-	-	-	-	-	-	-
Guava/Zeytun'	-	-	-	-	-	-	-	-
Lemons	-	-	-	-	-	-	-	-
Mangos	-	-	-	-	-	-	-	-
Oranges	-	-	-	-	-	-	-	-
Papayas	-	-	-	-	-	-	-	-
Pineapples	-	-	-	-	-	-	-	-
Cash crops	2,456.96	197.25	-	-	1,988.66	0.6	464.36	18.6
Chat	-	-	-	-	-	-	-	-
Coffee	-	-	-	-	1,978.46	-	-	-
Tea	-	-	-	-	10.2	0.6	-	-
Hopes/Gesho'	-	-	-	-	-	-	-	-
Enset	-	-	-	-	-	-	-	-
Sugar cane	-	-	-	-	-	-	-	-
Cotton	2,456.96	197.25	-	-	-	-	464.36	18.6
Other permanent crops	-	-	-	-	-	-	-	-

Table 3.9: Estimate of farm input applied cropland area and quantity of input used by crop and input types for commercial farms, 2006 E.C. (201-14) Dire Dawa Region

Type of crop	Chemical Fertilizer Applied				Seed type			
	UREA		DAP		Improved Seed		Indigenous Seed	
	Area in Ha	Amount in Qts	Area in Ha	Amount in Qts	Area in Ha	Amount in Qts	Area in Ha	Amount in Qts
Total	0.68	3.5	-	-	0.3	0.05	-	-
Grains	-	-	-	-	-	-	-	-
Cereals	-	-	-	-	-	-	-	-
Teff	-	-	-	-	-	-	-	-
Barley	-	-	-	-	-	-	-	-
Wheat	-	-	-	-	-	-	-	-
Maize	-	-	-	-	-	-	-	-
Sorghum	-	-	-	-	-	-	-	-
Finger millet	-	-	-	-	-	-	-	-
Oats/Aja/	-	-	-	-	-	-	-	-
Rice	-	-	-	-	-	-	-	-
Pulse	-	-	-	-	-	-	-	-
Horse/Faba beans	-	-	-	-	-	-	-	-
Field peas	-	-	-	-	-	-	-	-
Haricot beans	-	-	-	-	-	-	-	-
Chick peas	-	-	-	-	-	-	-	-
Lentils	-	-	-	-	-	-	-	-
Vetch/Grass peas	-	-	-	-	-	-	-	-
Soybeans	-	-	-	-	-	-	-	-
Fenugreek	-	-	-	-	-	-	-	-
Gibto	-	-	-	-	-	-	-	-
Oil seeds	-	-	-	-	-	-	-	-
Noug	-	-	-	-	-	-	-	-
Linseed	-	-	-	-	-	-	-	-
Ground nuts	-	-	-	-	-	-	-	-
Safflower	-	-	-	-	-	-	-	-
Sesame	-	-	-	-	-	-	-	-
Rapeseed	-	-	-	-	-	-	-	-
Vegetables	0.19	0.25	-	-	0.25	0.02	-	-
Lettuce	-	-	-	-	-	-	-	-
Head Cabbage	-	-	-	-	-	-	-	-
Ethiopian Cabbage	-	-	-	-	-	-	-	-
Tomatoes	0.12	0.15	-	-	0.12	0.01	-	-
Green peppers	0.07	0.1	-	-	0.07	0.01	-	-
Red papers	-	-	-	-	-	-	-	-
Swiss chard	-	-	-	-	0.06	-	-	-
Root crops	0.05	0.1	-	-	0.05	0.01	-	-
Beet root	-	-	-	-	-	-	-	-
Carrot	-	-	-	-	-	-	-	-
Onion	0.05	0.1	-	-	0.05	0.01	-	-
Potatoes	-	-	-	-	-	-	-	-
Garlic	-	-	-	-	-	-	-	-
Taro/Godere/	-	-	-	-	-	-	-	-
Sweet potatoes	-	-	-	-	-	-	-	-
Other Temporary	0.07	0.15	-	-	-	-	-	-
Permanent crops	0.37	3	-	-	-	-	-	-
Fruit crops	0.37	3	-	-	-	-	-	-
Avocado	-	-	-	-	-	-	-	-
Bananas	-	-	-	-	-	-	-	-
Guava/Zeytun/	-	-	-	-	-	-	-	-
Lemons	-	-	-	-	-	-	-	-
Mangos	-	-	-	-	-	-	-	-
Oranges	0.37	3	-	-	-	-	-	-
Papayas	-	-	-	-	-	-	-	-
Pineapples	-	-	-	-	-	-	-	-
Cash crops	-	-	-	-	-	-	-	-
Chat	-	-	-	-	-	-	-	-
Coffee	-	-	-	-	-	-	-	-
Tea	-	-	-	-	-	-	-	-
Hopes/Gesho/	-	-	-	-	-	-	-	-
Enset	-	-	-	-	-	-	-	-
Sugar cane	-	-	-	-	-	-	-	-
Cotton	-	-	-	-	-	-	-	-
Other permanent crops	-	-	-	-	-	-	-	-

Cont'd Dire Dawa Region

Type of crop	Chemicals						Other	
	Pesticides		Fungicides		Herbicides			
	Area in Ha	Amount in Qts	Area in Ha	Amount in Qts	Area in Ha	Amount in Qts	Area in Ha	Amount in Qts
Total	2.31		8.34	0.66	0.22		16.87	1,229.00
Grains	-	-	-	-	-	-	-	-
Cereals	-	-	-	-	-	-	-	-
Teff	-	-	-	-	-	-	-	-
Barley	-	-	-	-	-	-	-	-
Wheat	-	-	-	-	-	-	-	-
Maize	-	-	-	-	-	-	-	-
Sorghum	-	-	-	-	-	-	-	-
Finger millet	-	-	-	-	-	-	-	-
Oats/Aja'	-	-	-	-	-	-	-	-
Rice	-	-	-	-	-	-	-	-
Pulse	-	-	-	-	-	-	-	-
Horse/Vaba beans	-	-	-	-	-	-	-	-
Field peas	-	-	-	-	-	-	-	-
Haricot beans	-	-	-	-	-	-	-	-
Chick peas	-	-	-	-	-	-	-	-
Lentils	-	-	-	-	-	-	-	-
Vetch/Grass peas	-	-	-	-	-	-	-	-
Soya beans	-	-	-	-	-	-	-	-
Fenugreek	-	-	-	-	-	-	-	-
Gibto	-	-	-	-	-	-	-	-
Oil seeds	-	-	-	-	-	-	-	-
Noug	-	-	-	-	-	-	-	-
Linseed	-	-	-	-	-	-	-	-
Ground nuts	-	-	-	-	-	-	-	-
Safflower	-	-	-	-	-	-	-	-
Sesame	-	-	-	-	-	-	-	-
Rapeseed	-	-	-	-	-	-	-	-
Vegetables	-	-	-	-	-	-	0.5	15
Lettuce	-	-	-	-	-	-	-	-
Head Cabbage	-	-	-	-	-	-	-	-
Ethiopian Cabbage	-	-	-	-	-	-	-	-
Tomatoes	-	-	-	-	-	-	0.24	6
Green peppers	-	-	-	-	-	-	0.14	7
Red papers	-	-	-	-	-	-	-	-
Swiss chard	-	-	-	-	-	-	0.12	2
Root crops	-	-	-	-	-	-	0.1	2
Beet root	-	-	-	-	-	-	-	-
Carrot	-	-	-	-	-	-	-	-
Onion	-	-	-	-	-	-	0.1	2
Potatoes	-	-	-	-	-	-	-	-
Garlic	-	-	-	-	-	-	-	-
Taro/Godere'	-	-	-	-	-	-	-	-
Sweet potatoes	-	-	-	-	-	-	-	-
Other Temporary	-	-	-	-	-	-	0.14	7
Permanent crops	2.31		8.34	0.66	0.22		16.13	1,205.00
Fruit crops	1.77		0.34	0.66	0.22		14.05	1,096.00
Avocado	-	-	-	-	-	-	-	-
Bananas	-	-	-	-	-	-	-	-
Guava/Zeytun'	-	-	-	-	-	-	-	-
Lemons	-	-	-	-	-	-	0.8	6
Mangos	0.15		0.06	-	-	-	0.35	-
Oranges	1.62		0.28	0.66	0.22		11.71	378
Papayas	-	-	-	-	-	-	1.19	712
Pineapples	-	-	-	-	-	-	-	-
Cash crops	-	-	-	-	-	-	0.1	2
Chat	-	-	-	-	-	-	-	-
Coffee	-	-	-	-	-	-	0.1	2
Tea	-	-	-	-	-	-	-	-
Hopes/Gesho'	-	-	-	-	-	-	-	-
Enset	-	-	-	-	-	-	-	-
Sugar cane	-	-	-	-	-	-	-	-
Cotton	-	-	-	-	-	-	-	-
Other permanent crops	0.54		8	-	-	-	1.98	107

Appendix I Estimation procedure

The following formulas are used for estimation.

1. Estimating the total (For crop)

$$\hat{Y}_h = \sum_{i=1}^{n_h} w_{hi} y_{hi}$$

In which

$$w_{hi} = \frac{M_h}{m_{hi} n_h} \text{ Is the weight}$$

Where

$h =$ Represents region

$n_h =$ Total number of farms covered in the region

$M_h =$ Measure of size of h^{th} region which is the total area in that region for those selected with less than 1 probability.

$M_{hi} =$ Total area for farm i in h^{th} region

$y_{hi} =$ Total for the variable in i^{th} farm h^{th} region

2. Estimation for livestock

$$\hat{Y}_h = \sum w_{hi} y_{hi}$$

In which $w_{hi} = \frac{N_h}{n_h}$ Is the weight

Appendix I

*Estimation Procedures of Tables, Ratios and
sampling Error*

Large and medium Scale Commercial Farms

2013/14 (2006EC)

Where

h = Represents region

N_h = Measure of size for h^{th} region which is total number of farms having livestock in that region from the frame.

n_h = Total number of farms with livestock covered in that region

y_{hi} = total for the variable in i^{th} farm h^{th} region

3. Estimating sampling variance

Sampling variance & estimate of stratum total are estimated by the

Following formula

$$\text{var}(\hat{Y}_h) = \frac{n_h}{n_h - 1} \left[\sum_{i=1}^{n_h} \hat{Y}_{hi}^2 - \frac{\hat{Y}_h^2}{n_h} \right]$$

4. Estimating coefficient of variation

Coefficient of variation (CV) of estimate of region total is given

$$CV(\hat{Y}_h) = \sqrt{\frac{\text{var}(\hat{Y}_h)}{\hat{Y}_h^2}} \times 100\%$$

Appendix II

Questionnaire

Large and medium Scale Commercial Farms

2013/14

Appendix II

Central Statistical Agency

Large and Medium Scale Commercial Farm Sample Survey

2013/14 (2006 E.C)

CF-Form 2006/I

Part 1. Identification Particulars

1	2	3	4	5	6	7	8
Region	Zone	Wereda	Farm name	Kebele	Farm Tenure State = 1 Private= 2 Coops= 3 Other= 4	Type of Holding Crop only , 1 Livestock only, 2 Both 1&2 , 3	Statistical Branch Office

Season	Meher = 1 Belg , 2	
--------	--------------------	--

Part 2 :- Crop land area and Quantity production of Major crops 2013/14 (2006 E.C)

1	2	3	4	5	6	7	8	9	10	
Sr. No	Crop Type	Code	Cropped Area		Production	Yield (Qts/Ha)	Crop Damage	Is there Crop Damage?		
			From Interview method (In Hectare)	From GPS Reading (In Hectare)	In Quintals		Yes=1 No=2	if Yes Reason	Code	Extent of Damage in Percent
1	Sesame	27								
2	Maize	02								
3	Sorghum	06								
4	Soyabens	12								
5	Nueg	25								
6	Sufflower	28								
7	Linsed	23								
8	Ground NBut	24								
9	Coffee	72								

Part 2 :- Crop land area and Quantity production of Major crops 2013/14 (2006 E.C)

1	2	3	4	5	6	7	8	9	10
Sr. No	Crop Type	Code	Cropped Area		Production	Yield (Qts/Ha)	Crop Damage Yes=1 No=2	Is there Crop Damage?	
			From Interview method (In Hectare)	From GPS Reading (In Hectare)	In Quintals			If Yes Reason	Code
10	Sugar cane	76							
11	Teff	07							
12	Barely	01							
13	Wheat	08							
14	oats	04							
15	Rlse	05							
16	Faba Beans	13							
17	Haricot Beans	15							
18	Soyabenns	18							
19	Chick pease	11							
20	Lintils	14							
21	Redpeper	38							
22	Foselia/Fajoli	70							
23	orange	47							
24	Banana	42							
25	Apple	113							
26	Grapes	43							
27	Others								

Part 3- Information on Different Agricultural Practices 2013/14 (2006 E.C)

1	2	3	4	5	6	7	8	9
SR. No.	Type of Farm Input	Code	Farm in put listed in Col. 2 Applied			Type of input Used		Production per Hectare
			Crop Name	Code	Field area in Hectare	Unit	Amount	

Name Signature Date

Enumerator _____

PRINTED IN CSA