

SUMMARY REPORT
ON
ETHIOPIA'S MANUFACTURING INDUSTRY
1955 - 1962

Prepared by:

Central Statistical Office
Imperial Ethiopian Government.

Addis Ababa.
July 1964.

S U M M A R Y R E P O R T

ON

ETHIOPIA'S MANUFACTURING INDUSTRY

1955 - 1962

Prepared by:

Central Statistical Office
Imperial Ethiopian Government.
Addis Ababa,

July 1964.

የአስተዳደር ጽ/ቤት
ዲ.ቲ. ጽ/ቤት
C. S. O. Library

SUMMARY REPORT ON ETHIOPIA'S
MANUFACTURING INDUSTRY, 1955-1962

Prepared by: Central Statistical Office
Imperial Ethiopian Government.
July 1964.

<u>C O N T E N T S</u>		<u>P a g e</u>
	Explanatory Notes.....	1 - 11
Table	1a. Index numbers of industrial production, 1962-63 (1961=100).	1
Table	1b. Index numbers of industrial production for the Empire of Ethiopia, 1958-1963 (1955=100)	2
Table	1c. Index numbers of industrial production for the 13 provinces, 1951-1963 (1950 = 100).....	2
Table	1d. Summary of manufacturing industry, 1955-1962.....	2a-2b.
Table	1e. Employment, wages & salaries paid, and value added per employee in manufacturing industry, 1955-1962.....	2c-2d
Table	1f. Capital expenditure in manufacturing industry, 1955-1962....	2e
Table	1g. Manufacturing establishments by size of employment, 1958 & 1960 - 1962.....	2f
Table	1h. Manufacturing establishments by grouping of value added, 1958 & 1960-1962	2f
Table	1i. Manufacturing establishments by grouping of gross value of production, 1958 & 1960 - 1962.....	2g
Table	2. Industrial (factory) production in manufacturing industry for the Empire, 1955-1963	3 - 6
Table	3. Industrial (factory) production in manufacturing industry in the 13 provinces, 1952 - 1963	7 - 8
Table	4. Industrial (factory) production in manufacturing industry in Eritrea Province, 1955 - 1963.....	9 -11
Table	5. Gross & net output (i.e. value added) of manufacturing industry, 1962.....	12
Table	6. Fixed capital assets of, and capital expenditure in, manufacturing industries, 1962.....	13
Table	7. Composition of fixed capital assets of manufacturing industries. (as of September 1962).....	14 - 15
Table	8. Operating statistics of manufacturing industry in the 13 provinces, 1962	16 - 17
Table	9. Operating statistics of manufacturing industry in Eritrea Province, 1962	18
Table	10. Employment in, and wages & salaries paid by, manufacturing industries in the 13 provinces, 1962.....	19
Table	11. Employment in, and wages & salaries paid by, manufacturing industries in Eritrea Province, 1962.....	20

EXPLANATORY NOTES

1. Aims: This small booklet is prepared to put together in one volume the relevant statistics concerning manufacturing industry which have been collected by different agencies and appeared in a number of publications over the past few years.

2. Source of material: Agencies responsible for the collection of monthly and annual statistics concerning industry comprise the Ministry of Commerce & Industry (for 1952 - 1960) and the Central Statistical Office (for 1961-1964), and the Ministry of Mines (for mining).

Data for the 13 provinces (for manufacturing and electricity) are available from 1950 to date, while similar data for the Eritrea Province are available only from 1955 onward.

Beginning with 1963 (or 1955 E.C.), the current Annual Survey of Industry has been extended by the Central Statistical Office, with the co-operation of the Ministry of Public Works, to cover the Building and Contracting industry as well.

3. Scope and Coverage:

- (i) Geographically the annual Survey covers the whole Empire of Ethiopia (including Eritrea Province);
- (ii) Industry-wise, the Survey of manufacturing industry excludes small flour mills widespread in the country (according to licences issued, about 3,000 in number), small oil presses, small shoemakers and repairers, tailors, hand spinners and hand-loom weavers, bakers, and coffee and grain cleaning, handicraft, and service industries (e.g. garages, dry cleaning);
- (iii) In terms of size of employment, most of those covered by the Survey employ on the average five persons or more in the year;
- (iv) In view of the imperfect listing of manufacturing establishments, especially with regard to their accessibility, e.g. through postal questionnaire or telephones, only the larger ones are covered by the Survey.
- (v) The collection of data has been seriously affected by the lack of a statistical enabling legislation to make compulsory the making of returns by industrial establishments;
- (vi) Nevertheless, it is estimated that the recorded portion of manufacturing industry covered by the annual Survey accounts for over 80% of the total value added by manufacturing.

4. Calendar: For the years 1952 - 1962 , most of the establishments covered reported data according to the Ethiopian Calendar, i.e. for fiscal periods ending September 10th of the years stated, although a few large firms kept their books according to the Gregorian Calendar, i.e. for years ending Dec. 31st.

From 1963 (or 1955 E.C.) onward, most establishments kept records according to the fiscal year, i.e. for the years July 7th./July 6th, to comply with the requirements of tax authorities.

5. Contents of annual Survey questionnaire:

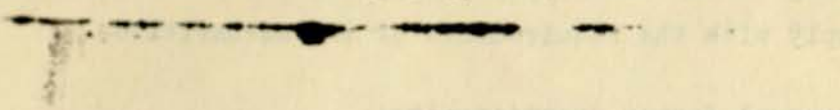
Annual survey questionnaires have been sent to 116 manufacturing establishments in the 13 Provinces and 104 establishments in Eritrea Province, making a total of 220 manufacturing establishments for the Empire. Returns are received from about 160, making a response rate of about 73%.

The questionnaires include such items as capacity, production, value of sales, stocks (inventory) of finished goods and materials, and goods in process, purchase of materials and fuel, employment, wages and salaries paid, structure of fixed capital assets, capital expenditure, depreciation, power equipment, and a host of other related questions.

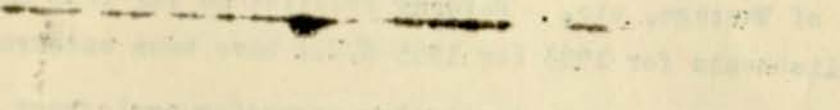
In the questionnaire for 1963 (or 1955 E.C.) sent in March 1964, additional questions have been included to cover: Legal Form, Ownership, Capital Invested, Calendar Year of Account, Area occupied, Basic Machines, Exports, Water Supply and Transport facilities, Labour Disputes, Vacancies, Anticipated change in Employment, Disposal of Wastage, etc. Returns received so far from manufacturing establishments for 1963 (or 1955 E.C.) have been encouraging.

In addition, monthly statistics regarding employment, production, stocks of finished goods, capital expenditure, etc. have also been collected periodically by the Central Statistical Office from about 30 larger-sized manufacturing establishments to provide more timely information and monthly movements. The 30 establishments accounted for 83% of the total value added by the recorded portion of manufacturing industry in 1962 (or 1954 E.C.), as against an 80% for 1961 (1953 E.C.).

The first part of the report is devoted to a general
 description of the country and its resources. It
 is followed by a detailed account of the
 various industries and occupations of the
 people. The report concludes with a summary
 of the principal facts and a list of
 the principal places mentioned.



The second part of the report is devoted to a
 detailed description of the various
 occupations and industries of the
 people. It is followed by a list of
 the principal places mentioned in the
 report. The report concludes with a
 summary of the principal facts and a
 list of the principal places mentioned.



The third part of the report is devoted to a
 detailed description of the various
 occupations and industries of the
 people. It is followed by a list of
 the principal places mentioned in the
 report. The report concludes with a
 summary of the principal facts and a
 list of the principal places mentioned.

6. Definition of terms and explanations:

The definitions used in the Survey of Manufacturing Industry have been those included in the United Nations Statistical Papers Series N. No. 17, "International Standards in Basic Industrial Statistics".

Here only a few explanations will be given as necessary.

- (a) The establishment approach is adopted for the Survey instead of the enterprise. Establishments are classified according to their principal activity or commodity produced;
- (b) Persons engaged: Data on the number of working proprietors (defined as owners and members of their families working one-third or more of the normal hours without fixed pay) have been separately collected. As they totalled only 72 (consisting of 70 foreigners and 2 Ethiopians) in 1962 out of a total of 32,656 engaged persons, they have been left out of account for the purpose of classifying establishments by size.
- (c) Employees and wages and salaries paid: Employees have been classified into Operatives (production workers), Administrative, Technical, and Clerical workers, and Other employees (e.g. watchmen, messengers, cleaners, etc.)

Payments (including those in kind) to "Operatives and other employees" and payments to "Administrative, Technical and Clerical employees" are separately reported in the questionnaire.

Definitions regarding "materials consumed", "gross output", and "Value added", etc. are all those defined in the international standards used in most industrial censuses and surveys of other countries and need no elaboration here.

7. Index of Industrial Production:

The index covers manufacturing and electricity but excludes mining and construction. For the calculation of the index, the ex-factory prices of 1957 have been used as weights and applied to 35 production series for the 13 provinces and 37 production series for Eritrea Province.

...../.....

The first part of the report deals with the general situation of the country and the progress of the war.

The second part deals with the financial situation and the measures taken to meet the needs of the Government.

The third part deals with the industrial situation and the measures taken to increase production.

The fourth part deals with the agricultural situation and the measures taken to increase output.

The fifth part deals with the social situation and the measures taken to improve the lot of the people.

The sixth part deals with the foreign situation and the measures taken to maintain our position.

The seventh part deals with the military situation and the measures taken to strengthen our defenses.

The eighth part deals with the naval situation and the measures taken to protect our shipping.

Index of Industrial Statistics

This index covers manufacturing and electricity and includes the following items:

1. Iron and steel
2. Coal
3. Cotton
4. Woollen
5. Linen
6. Paper
7. Glass
8. Chemicals
9. Electricity

The index is published annually and is available to the public at a nominal price.

The series are all physical output series, and the index is therefore essentially a weighted arithmetic average of quantities produced.

To obtain index numbers for the Empire as a whole, the weights of 3 : 1 have been used for 1956 - 1961 (i.e. the ratio of 3 : 1 represents the relative total values added by manufacturing industry in the 13 provinces and Eritrea Province respectively during 1957 - 61). For 1962 & 1963, the country indexes have been arrived at by weighting physical quantities produced in the Empire by 1957 ex-factory prices direct .

For the 13 provinces, index numbers of industrial production are available from 1951 onward (with 1950=100). For the country as a whole, the index is available only from 1956 onward (with 1955=100).

8. Revision and correction:

The data included herein are subject to later revision or correction.

Central Statistical Office,
Imperial Ethiopian Government,
Addis Ababa.

July 1964.

(1961 = 100)

<u>Industrial group</u>	<u>Empire of Ethiopia</u>		<u>The 13 provinces</u>		<u>Eritrea province</u>	
	<u>1962</u>	<u>1963</u>	<u>1962</u>	<u>1963</u>	<u>1962</u>	<u>1963</u>
<u>Manufacturing:</u>						
Foods	103.3	127.5	103.8	135.2	102.0	104.4
Beverages & Tobacco	104.6	116.9	109.8	122.1	94.9	107.0
Textiles	131.9	140.0	132.5	138.7	129.0	145.3
Leather goods)			(107.9	123.6)		
Building materials, etc. ...)			(128.5	104.2)		
Miscellaneous)	113.1	116.4	(100.0	107.4)	101.9	125.8
Total, Manufacturing:	114.6	128.7	116.8	131.9	107.6	118.5
<u>Electricity (both public utility & industrial firms)</u>	121.5	141.4	123.8	148.8	114.5	118.9
<u>General index, Manufacturing & Electricity</u>	115.6	131.3	117.8	135.3	108.6	118.6

Source: Central Statistical Office.

Table lb. Index Numbers of Industrial Production for the Empire of Ethiopia, 1958-1963

(1955 = 100)

Industrial group	The 13 provinces						Eritrea Province						Total, Ethiopia					
	1958	1959	1960	1961	1962	1963/ _P	1958	1959	1960	1961	1962	1963/ _P	1958	1959	1960	1961	1962	1963/ _P
<u>Manufacturing</u>																		
Foods	132	146	162	158	164	214	92	77	132	116 _r	118	121	122	129	155	141	146	180
Beverages & tobacco	122	154	179	216	237	264	117	107	103	106	101	113	121	142	160	189	198	221
Textiles	115	123	185	227	301	315	152	164	183	243	313	353	124	133	185	231	305	323
Leather goods	168	162	182	193	208	239)												
Building materials, etc.	115	93	100	128	165	133)	87	55	89	95 _r	96	119	113	94	112	127 _r	144	148
Miscellaneous	62	56	69	70	70	75)												
Total, Manufacturing	124	134	165	183	214	241	124	110	145	128 _r	138	152	124	128	160	172 _r	197	221
<u>Electricity (both public utility & industrial firms)</u>	145	165	190	240	297	357	117	125	142	163	186	193	135	155	178	215	261	304
<u>Total Manufacturing & Electricity/_r</u>	123	134	163	181	213	245	122	111	142	132 _r	143	157	123	128	158	172 _r	199	226

r = Revised. P = Preliminary.

Table lc. Index Numbers of Industrial Production for the 13 provinces, 1951-1963
(1950 = 100)

Industrial group	1951	1952	1953	1954	1955	1956	1957	1958	1959	1960	1961	1962	1963/ _r
<u>Manufacturing</u>													
Foods	104	100	119	137	223	242	286	295	325	361	352	365	476
Beverages & Tobacco	121	152	188	204	199	227	227	243	306	356	430	472	525
Textiles	72	197	267	313	395	444	517	452	485	731	895	1,186	1,241
Leather goods	113	191	197	206	213	322	357	358	346	388	411	443	508
Building materials, etc.	102	100	114	156	221	259	261	254	205	220	283	364	295
Miscellaneous	113	112	126	136	161	134	111	100	90	111	113	113	121
Total, Manufacturing:	101	133	163	187	249	280	308	308	333	410	455	531	600
<u>Electricity</u>	105	119	142	167	183	210	243	265	371	428	538	666	801
<u>Total Manufacturing & Electricity, _r</u>	101	130	161	184	235	263	288	290	314	382	425	501	575

Source: Central Statistical Office.

TABLE OF CONTENTS

1	2	3	4	5	6	7	8	9	10	11	12	13	14	15	16	17	18	19	20	21	22	23	24	25	26	27	28	29	30	31	32	33	34	35	36	37	38	39	40	41	42	43	44	45	46	47	48	49	50	51	52	53	54	55	56	57	58	59	60	61	62	63	64	65	66	67	68	69	70	71	72	73	74	75	76	77	78	79	80	81	82	83	84	85	86	87	88	89	90	91	92	93	94	95	96	97	98	99	100
---	---	---	---	---	---	---	---	---	----	----	----	----	----	----	----	----	----	----	----	----	----	----	----	----	----	----	----	----	----	----	----	----	----	----	----	----	----	----	----	----	----	----	----	----	----	----	----	----	----	----	----	----	----	----	----	----	----	----	----	----	----	----	----	----	----	----	----	----	----	----	----	----	----	----	----	----	----	----	----	----	----	----	----	----	----	----	----	----	----	----	----	----	----	----	----	----	----	----	-----

TABLE OF CONTENTS (continued)

101	102	103	104	105	106	107	108	109	110	111	112	113	114	115	116	117	118	119	120	121	122	123	124	125	126	127	128	129	130	131	132	133	134	135	136	137	138	139	140	141	142	143	144	145	146	147	148	149	150	151	152	153	154	155	156	157	158	159	160	161	162	163	164	165	166	167	168	169	170	171	172	173	174	175	176	177	178	179	180	181	182	183	184	185	186	187	188	189	190	191	192	193	194	195	196	197	198	199	200
-----	-----	-----	-----	-----	-----	-----	-----	-----	-----	-----	-----	-----	-----	-----	-----	-----	-----	-----	-----	-----	-----	-----	-----	-----	-----	-----	-----	-----	-----	-----	-----	-----	-----	-----	-----	-----	-----	-----	-----	-----	-----	-----	-----	-----	-----	-----	-----	-----	-----	-----	-----	-----	-----	-----	-----	-----	-----	-----	-----	-----	-----	-----	-----	-----	-----	-----	-----	-----	-----	-----	-----	-----	-----	-----	-----	-----	-----	-----	-----	-----	-----	-----	-----	-----	-----	-----	-----	-----	-----	-----	-----	-----	-----	-----	-----	-----	-----	-----	-----

201	202	203	204	205	206	207	208	209	210	211	212	213	214	215	216	217	218	219	220	221	222	223	224	225	226	227	228	229	230	231	232	233	234	235	236	237	238	239	240	241	242	243	244	245	246	247	248	249	250	251	252	253	254	255	256	257	258	259	260	261	262	263	264	265	266	267	268	269	270	271	272	273	274	275	276	277	278	279	280	281	282	283	284	285	286	287	288	289	290	291	292	293	294	295	296	297	298	299	300
-----	-----	-----	-----	-----	-----	-----	-----	-----	-----	-----	-----	-----	-----	-----	-----	-----	-----	-----	-----	-----	-----	-----	-----	-----	-----	-----	-----	-----	-----	-----	-----	-----	-----	-----	-----	-----	-----	-----	-----	-----	-----	-----	-----	-----	-----	-----	-----	-----	-----	-----	-----	-----	-----	-----	-----	-----	-----	-----	-----	-----	-----	-----	-----	-----	-----	-----	-----	-----	-----	-----	-----	-----	-----	-----	-----	-----	-----	-----	-----	-----	-----	-----	-----	-----	-----	-----	-----	-----	-----	-----	-----	-----	-----	-----	-----	-----	-----	-----	-----

ITEMS	Unit	1955			1956			1957			1958		
		13 prov.	Eritrea prov.	total	13 prov.	Eritrea prov.	total	13 prov.	Eritrea prov.	total	13 prov.	Eritrea prov.	total
1. Number of Establishments in operation.	No.	66	76	142	64	74	138	64	68	132	65	68	133
2. Average Number of Employees													
Ethiopian	NO.	11,338	4,149	15,487	11,998	4,709	18,707	14,962	3,985	18,947	15,144	4,144	19,288
Foreigners	No.	373	161	534	422	243	665	430	291	721	412	298	710
3. Wages & salaries paid.	E\$1000.	7,292	2,606	9,898	8,462	2,773	11,235	9,480	2,445	11,925	9,568	2,945	12,513
4. Capital expenditure...	E\$1000.	7,322	1,850	9,172	5,192	2,404	7,596	4,000	971	4,971	4,974	1,135	6,129
5. Fixed capital Assets Sep. E\$1000		1,511	13,615	55,126	44,850	16,757	61,607	44,438	16,739	61,179	51,642	19,912	71,554
6. Gross value of production	E.\$1,000	48,089	22,871	70,960	53,140	19,464	72,604	62,394	23,469	82,586	59,672	23,671	83,343
7. Net value (value added) production	E.\$1,000	20,661	12,295	32,596	24,779	7,556	32,335	31,189	10,575	38,487	30,925	9,086	40,011
8. Purchase of Material	E.\$1,000	25,207	9,519	34,726	25,619	10,904	36,523	28,431	11,648	40,079	26,157	13,488	39,645
9. Purchase of Fuel ...	E.\$1,000	2,221	1,057	3,278	2,742	1,001	3,743	2,774	1,248	4,123	2,590	1,124	3,714
10. Stocks of finished goods													
Beginning of year	E.\$1,000	3,369	3,233	6,602	6,697	4,137	6,860	6,697	4,137	10,834	8,382	5,131	14,689
End of year ...	E.\$1,000	3,228	3,679	6,907	8,259	3,071	11,138	8,259	3,071	11,330	9,558	5,131	14,689
11. Stock of Materials:													
Beginning of year	E.\$1,000	3,701	1,502	5,203	6,915	3,137	7,627	6,915	3,137	10,052	6,634	3,810	10,444
End of year ..	E.\$1,000	5,033	1,524	6,557	6,475	3,824	10,299	8,754	3,824	12,578	7,175	3,396	10,571
12. Generating power (End of year) Kw.		9,099	145	9,244	9,099	789	9,888	9,686	943	10,629	9,440	943	10,383
13. Motor power (End of year) H.P.		14,535	3,640	18,375	14,535	5,200	19,735	15,450	4,145	19,868	15,602	4,642	20,274

The sudden increase in fixed capital in 1958 was due mainly to re-evaluation of such assets by industrial firms.

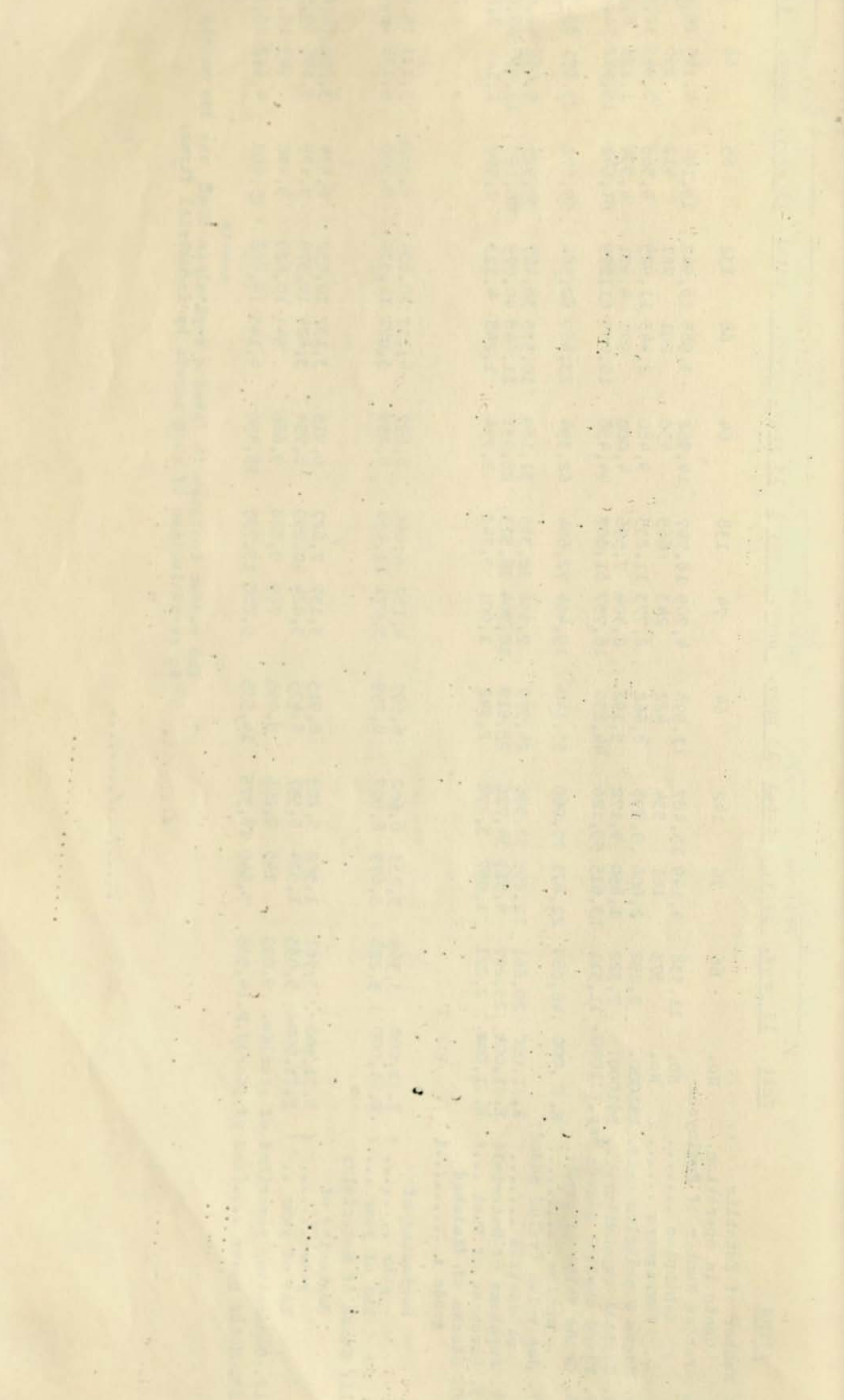


Table Id.

Summary of manufacturing Industries, 1955 - 1962

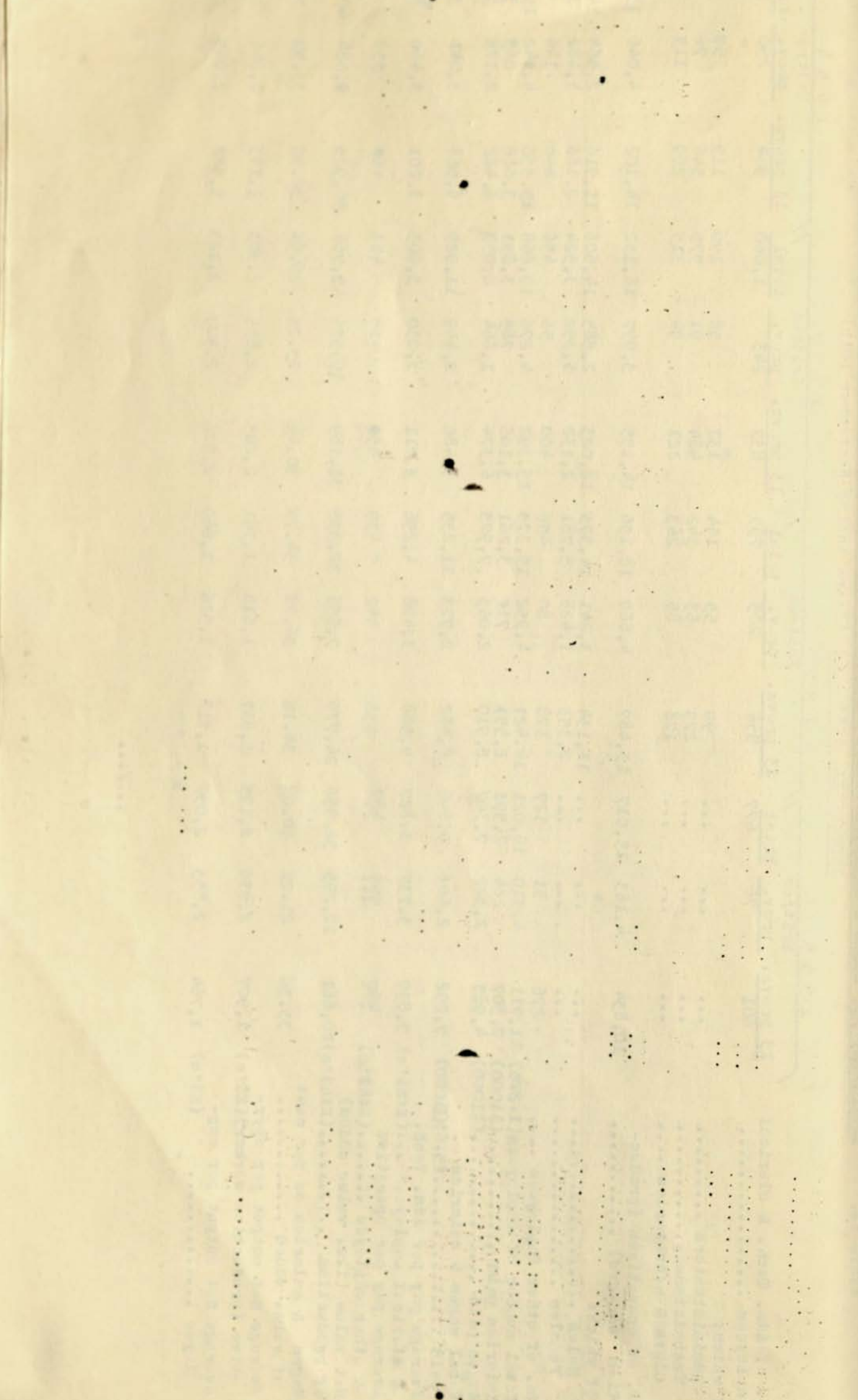
Items	Unit	1959			1960			1961			1962		
		Eritrea		total	Eritrea		total	Eritrea		total	Eritrea		total
		13 prov.	Prov.		13 prov.	prov.		13 prov.	prov.		13 prov.	prov.	
Number of Establishments in operation.	No.	73	73	146	74	73	147	84	74	154	86	78	164
Average Number of Employees													
Ethiopians.....	No.	17,998	4,305	22,303	19,698	5,601	25,299	21,277	6,274	27,551	24,676	7,068	31,744
Foreigners.....	No.	429	361	790	796	294	1,090	470	293	763	491	349	840
Wages & salaries paid.	E\$1000.	9,964	2,961	12,925	11,533	3,376	14,909	14,107	3,763	17,870	16,711	4,592	21,303
Capital expenditure...	E\$1000.	8,515	1,253	9,768	12,991	3,216	16,207	23,835	8,508	32,343	21,465	3,438	24,903
Fixed capital Assets(Sep. E\$1000.)		58,839	19,586	78,425	69,055	23,766	92,821	89,376	30,179	119,555	105,945	34,129	140,074
Gross value of production	E.\$1,000.	64,243	24,270	88,513	78,026	29,468	107,494	82,608	31,804	114,412	96,198	32,679	128,877
Net value (value added) of production	E.\$1,000	31,699	9,132	40,831	38,026	11,248	49,274	35,891	13,131	49,022	45,775	15,063	60,838
Purchase of Material	E.\$1,000	29,529	13,804	43,333	35,800	16,571	52,371	41,741	16,581	58,322	46,415	15,731	62,146
Purchase of Fuel ...	E.\$1,000	2,754	1,142	3,896	3,312	1,647	4,959	3,343	1,720	5,063	4,028	1,894	5,922
Stocks of finished goods:													
Beginning of year	(E.\$1,000)	9,037	7,524	4,581	12,105	9,526	5,507	15,033	11,197	5,566	16,763
End of year	(E.\$1,000)	7,670	8,379	5,404	13,783	7,459	5,951	13,410	14,443	7,336	21,779
Stock of Materials:													
Beginning of year	(E.\$1,000)	7,212	8,103	3,646	11,749	7,649	6,340	13,989	10,683	9,384	20,067
End of year	(E.\$1,000)	8,186	10,136	6,308	16,444	8,698	7,515	16,213	12,732	10,279	23,011
Generating power(End of year)	Kw.	9,385
Motor power(End of year)	H.P.	15,705

Source: Central Statistical Office.

INDUSTRIES, 1955 - 62 (Years ending September 10th)

	1955			1956			1957			1958		
	Eritrea			Eritrea			Eritrea			Eritrea		
	13 provs.	prov.	total	13 provs.	prov.	total	13 provs.	prov.	total	13 provs.	prov.	total
1. No. of Adm. Tech. & clerical employees	601	76	677	556	203	759	837	243	1,080	964	250	1,214
of which:												
Administrators	99	55	154	132	58	190	119	59	178
Technicians	279	63	342	484	91	575	546	76	622
Clerk & secretaries	178	85	263	221	94	315	299	115	414
2. No. of operatives (production workers)	10,834	4,183	15,017	13,487	4,669	18,156	14,155	3,977	18,132	14,102	4,046	18,148
of which:												
Males	11,134	3,241	14,375	12,023	2,585	14,608	11,916	2,564	14,480
Females	2,353	1,428	3,781	2,132	1,392	3,524	2,186	1,482	3,668
3. No. of other Employees	276	51	327	378	80	458	400	56	456	490	146	636
4. Total number of employees(1+2+3)	11,711	4,310	16,021	14,421	4,952	19,373	15,392	4,276	19,668	15,556	4,442	19,998
5. Salaries paid	2,307	284	2,591	2,551	710	3,261	3,106	785	3,891	3,086	867	3,951
6. Wages paid	4,985	2,322	7,307	5,910	2,063	7,973	6,374	1,664	8,038	6,422	2,176	8,658
7. Total wages & salaries paid	7,292	2,606	9,898	8,462	2,773	11,235	9,480	2,449	11,929	9,568	3,041	3,255
8. Average pay per Adm. Tech. & clerical employee	3,839	3,737	3,827	4,588	3,498	4,296	3,711	3,230	3,603	3,201	3,460	3,257
9. Average pay per operative & other employee	460	555	487	438	442	439	450	418	443	460	538	477
10. Net value (i.e. value added) of production	20,661	12,295	32,956	24,779	7,556	32,335	31,189	10,575	41,764	30,925	9,086	40,011
11. Wages & salaries as per cent of value added	35.3%	21.2%	30.0%	34.1%	36.7%	34.7%	30.4%	23.2%	28.6%	30.9%	33.5%	31.5%
12. Average Net output per operative (production worker)	1,907	2,939	2,195	1,837	1,618	1,781	2,203	2,659	2,303	2,193	2,246	2,205
13. Average Net output per employee	1,764	2,853	2,057	1,718	1,526	1,669	2,026	2,473	2,123	1,988	2,045	2,001

.../...



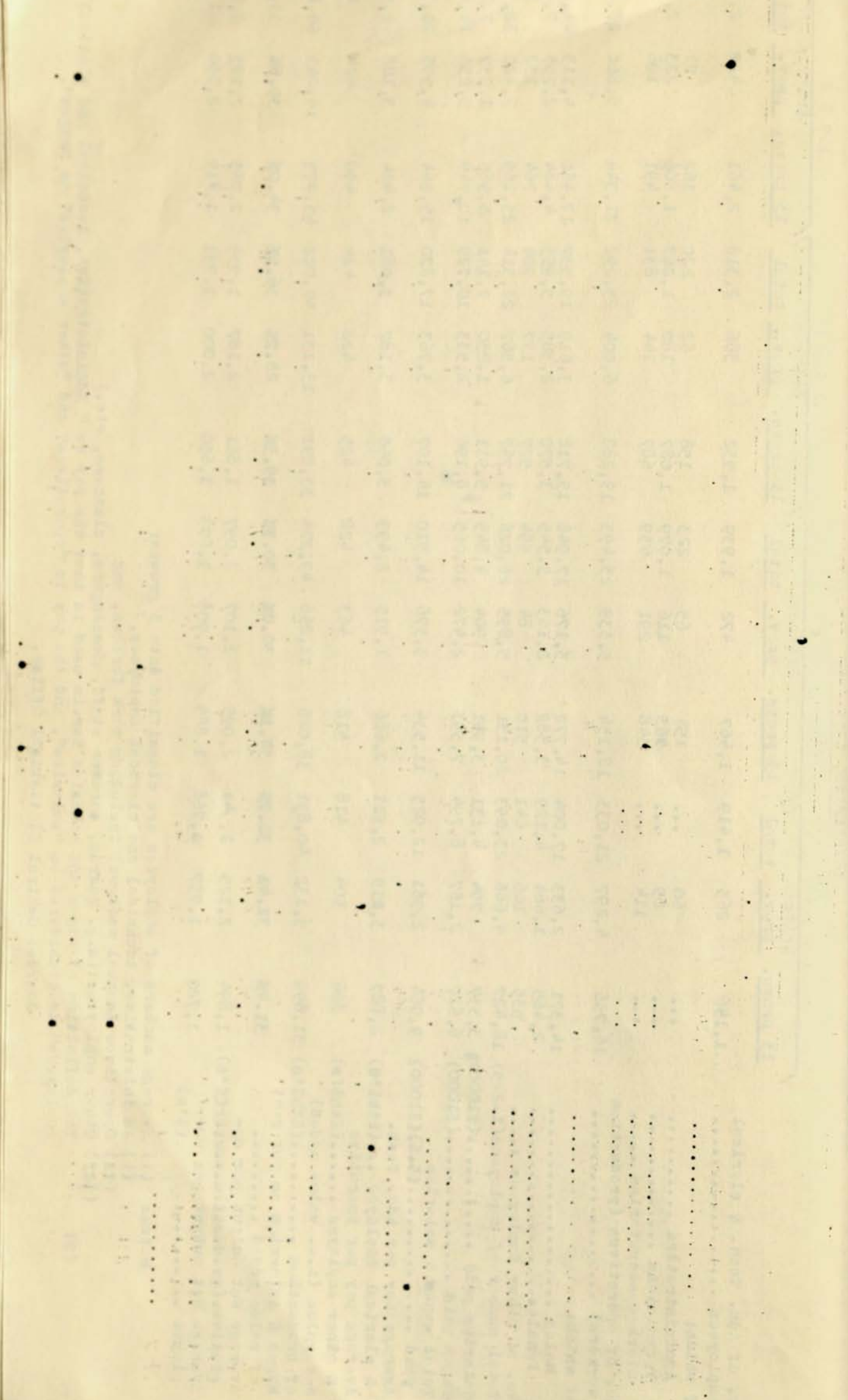
	1959			1960			1961			1962		
	Eritrea			Eritrea			Eritrea			Eritrea		
	13 provs.	prov.	total	13 provs.	prov.	total	13 provs.	prov.	total	13 provs.	prov.	total
1. No. of Adm. Tech. & clerical employees	1,156	263	1,419	1,467	472	1,939	1,932	386	2,318	2,461	420	2,881
of which:												
Administrators	60	...	158	65	223	158	62	220	162	71	233
Technicians	89	...	363	116	1,079	1,087	180	1,267	1,808	223	2,031
Clerk & secretaries	114	...	348	291	639	687	144	831	491	196	687
2. No. of operatives (production workers)	16,736	4,297	21,033	18,154	5,339	23,493	19,288	6,004	25,292	21,944	6,868	28,812
of which:												
Males	14,371	2,633	17,004	14,772	3,176	17,948	15,718	3,619	19,337	17,460	4,113	21,573
Females	2,465	1,664	4,129	3,382	2,163	5,545	3,570	2,385	5,955	4,484	2,755	7,239
3. No. of other Employees	535	106	641	510	84	594	527	177	704	764	132	896
4. Total number of employees(1+2+3)	18,427	4,666	23,093	20,131	5,895	26,026	21,747	6,567	28,314	25,169	7,420	32,589
5. Salaries paid	3,337	794	4,131	3,951	904	4,845	5,911	1,230	7,141	5,965	1,339	7,304
6. Wages paid	6,627	2,167	8,794	7,593	2,472	10,065	8,196	2,533	10,729	10,749	3,256	14,005
7. Total wages & salaries paid	9,964	2,961	12,925	11,534	3,376	14,910	14,107	3,763	17,870	15,564	4,595	20,159
8. Average pay per Adm. Tech. & clerical employee	2,887	3,019	2,911	2,686	1,915	2,499	3,060	3,187	3,081	2,424	3,188	2,535
9. Average pay per operative & other employee	396	504	418	418	463	428	425	422	424	490	474	486
10. Net value (i.e. value added) of production	31,699	9,132	40,831	38,026	11,248	49,274	35,891	13,131	49,022	45,775	15,063	60,838
11. Wages & salaries as per cent of value added	31.4%	32.4%	31.7%	30.1%	30.0%	30.7%	39.3%	28.7%	36.5%	34.0%	30.5%	33.1%
12. Average Net output per operative (production worker)	1,894	2,125	1,741	2,095	2,107	2,097	1,861	2,187	1,938	2,085	2,193	2,112
13. Average Net output per employee	1,720	1,957	1,768	1,889	1,908	1,893	1,650	2,000	1,731	1,819	2,030	1,860

Notes: (1) Average numbers of employees are classified into 3 groups:

- (i) Administrative, technical and clerical employees,
- (ii) Operatives (manual workers) including work foremen, and
- (iii) Other employees (e.g. guards, cartmen staff, messengers, cleaners, etc.)

(2) The definition of wages and salaries herein used is that the pay to "Administrative, technical and clerical employees" is considered as "salaries", and the pay to "operatives" and "other employees" as "wages".

Source: Central Statistical Office.



(in Eth. \$ thousands)

<u>Industrial group</u>	<u>1955</u>	<u>1956</u>	<u>1957</u>	<u>1958</u>	<u>1959</u>	<u>1960</u>	<u>1961</u>	<u>1962</u>	<u>1963</u> /P
Foodst	4,992	3,960	3,323	1,196	2,094	6,642	12,925	7,282	4,000
Beverages & tobacco	344	886	590	1,264	1,413	1,775	552	982	2,500
Textiles	1,399	1,860	303	2,382	4,687	8,089	15,694	13,290	3,800
Footwear & tanning of leather.....	265	299	96	89	348	408	236	120	200
Non-metallic mineral products	46	250	20	113	773	465	416	1,313	3,000
Sawmills & furniture	1,387	76	157	76	69	547	720	105	...
Chemicals	38	34	5	11	11	224	278	62	5,500
Miscellaneous	501	231	477	998	343	56	2,516	1,750	2,500
Total:	8,972	7,596	4,971	6,129	9,768	18,206	32,343	24,904	21,500

/P = Preliminary

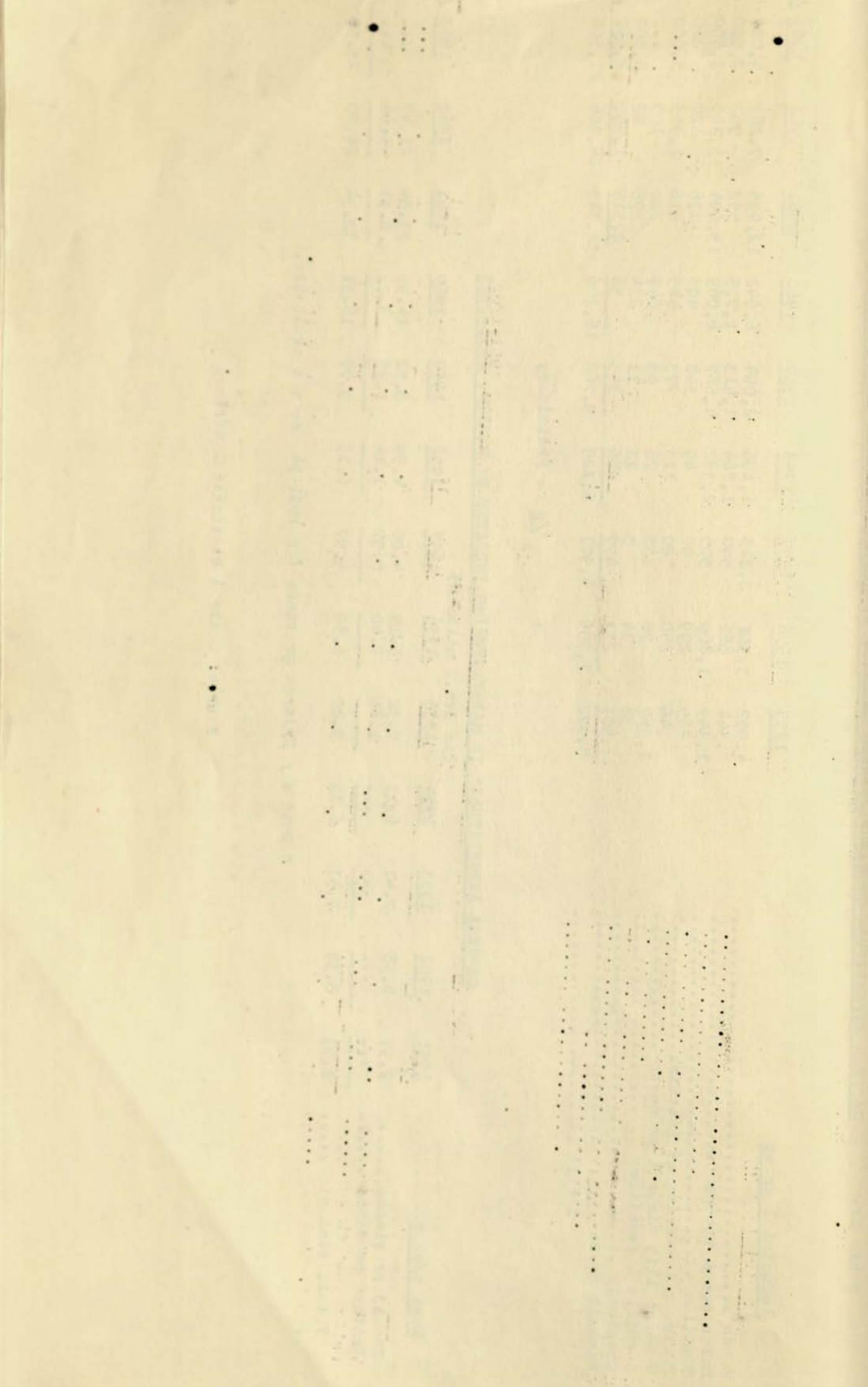
CAPITAL EXPENDITURE* IN MANUFACTURING INDUSTRY BY REGION, 1951-1963

(in Eth. \$ million)

<u>Region/year</u>	<u>1951</u>	<u>1952</u>	<u>1953</u>	<u>1954</u>	<u>1955</u>	<u>1956</u>	<u>1957</u>	<u>1958</u>	<u>1959</u>	<u>1960</u>	<u>1961</u>	<u>1962</u>	<u>1963</u> /P
The 13 provinces	2.91	8.38	7.41	6.11	7.32	5.19	4.00	4.99	8.52	14.99	23.84	21.47	...
Eritrea province	1.85	2.40	0.97	1.14	1.25	3.22	8.51	3.44	...
Total, Ethiopia	2.91	8.38	7.41	6.11	9.17	5.59	4.97	6.13	9.77	18.21	32.34	24.90	21.50

* Data for Eritrea province for 1951-54 are not available.

Source: Central Statistical Office.



Size group	No. of establishments				Employment (in number)				As % of total			
	1958	1960	1961	1962	1958	1960	1961	1962	1958	1960	1961	1962
Under 10	13	17	21	27	74	107	133	153	0.4	0.4	0.5	0.5
10 - 50	55	54	54	49	1,529	1,395	1,364	1,301	7.6	5.3	4.8	4.0
50 -100	21	20	20	23	1,406	1,442	1,376	1,534	7.0	5.5	4.9	4.7
100 -250	17	13	20	24	2,593	2,101	3,293	3,886	12.9	8.0	11.6	11.9
250 -500	13	14	12	18	4,367	4,727	4,106	6,193	21.7	17.9	14.5	19.0
500 -1000	3	4	5	10	2,207	2,976	3,264	6,382	11.0	11.3	11.3	19.6
1000 & over	2	4	4	5	7,888	12,871	13,881	11,282	39.2	48.7	49.0	34.6
Not stated	9	21	18	8	44	770	957	1,853	0.2	2.9	3.4	5.7
Totals:	133	147	154	164	20,108	26,389	28,314	32,584	100.0	100.0	100.0	100.0

Table 1h.

MANUFACTURING ESTABLISHMENTS BY VALUE ADDED, 1958 & 1960-1962
(for all the manufacturing establishments covered by the Annual Survey)

Group	No. of establishments				Value Added (in Eth. \$1000)				As % of total			
	1958	1960	1961	1962	1958	1960	1961	1962	1958	1960	1961	1962
Under 10,000 \$	15	14	14	16	75	73	75	88	0.2	0.2	0.2	0.1
\$ 10,000-50,000	42	34	32	31	1,086	938	870	819	3.1	2.1	1.8	1.3
\$ 50,000-100,000	19	20	24	22	1,423	1,511	1,786	1,626	4.0	3.4	3.6	2.7
\$ 100,000-250,000	27	26	24	31	3,876	4,392	4,216	4,566	10.9	9.8	8.6	7.5
\$ 250,000-500,000	7	15	16	24	2,405	4,862	5,488	7,772	6.8	10.8	11.2	12.8
\$ 500,000-1,000,000	10	9	10	9	7,528	6,323	7,057	5,824	21.2	14.1	14.4	9.6
\$ 1,000,000 & over	6	9	11	14	15,194	25,940	28,984	39,851	42.9	57.7	59.1	61.2
Not stated	7	20	23	17	3,871	879	546	291	10.9	1.9	1.1	4.8
Totals:	133	147	154	164	35,458	44,918	49,022	60,838	100.0	100.0	100.0	100.0

Source: Central Statistical Office.

(for all the manufacturing establishments covered by the Annual Survey)

Group	No. of establishments				Gross value of production (in Eth. \$ 1,000)				As % of total			
	1958	1960	1961	1962	1958	1960	1961	1962	1958	1960	1961	1962
	Under 50,000	26	26	23	28	648	751	658	728	0.8	0.7	0.6
50-100,000	20	18	20	19	1,408	1,296	1,410	1,495	1.7	1.2	1.2	1.2
100-250,000	29	29	32	25	4,100	4,792	5,440	3,666	4.9	4.4	4.8	2.8
250-500,000	23	19	21	30	8,225	6,240	7,465	9,015	9.9	5.7	6.5	7.0
500-1,000,000	12	19	14	15	8,483	13,668	10,231	10,273	10.2	12.7	8.9	8.0
1,000-2,000,000	6	7	11	11	7,949	11,105	15,126	14,608	9.5	10.3	13.2	11.3
2,000,000 & over	10	11	11	19	47,341	61,363	71,554	88,729	56.8	56.8	62.6	66.3
Not stated	7	18	22	17	5,189	8,795	2,528	366	6.2	8.2	2.2	2.8
Totals:	133	147	154	164	83,343	108,101	114,412	128,877	100.0	100.0	100.0	100.0

Table 1j.

MANUFACTURING ESTABLISHMENT BY FIXED CAPITAL ASSETS, 1958 & 1960-1962

(for all the manufacturing establishment covered by the Annual Survey)

Group	No. of establishments				Fixed capital Assets (in Eth. \$ 1,000)				As % of total			
	1958	1960	1961	1962	1958	1960	1961	1962	1958	1960	1961	1962
	Under E\$10,000	-	-	2	3	-	-	18	25	-	-	0.0
\$10,000-20,000	3	4	3	2	41	58	41	24	0.1	0.1	0.1	0.0
\$20,000-50,000	9	8	6	8	309	260	210	271	0.6	0.4	0.2	0.3
\$50,000-100,000	11	15	18	16	663	1,004	1,148	1,000	1.3	1.5	1.3	0.9
\$100,000-250,000	11	11	9	7	1,723	1,942	1,285	1,178	3.3	2.9	1.4	1.1
\$250,000-500,000	9	9	11	13	2,910	3,063	4,148	4,967	5.6	4.5	4.6	4.7
\$500,000-750,000	4	4	5	6	2,403	2,442	2,964	3,703	4.7	3.6	3.3	3.5
\$750,000-1,000,000	7	6	6	5	6,010	4,982	5,150	3,926	11.6	7.4	5.8	3.7
\$1,000,000-1,500,000	3	6	4	4	3,711	6,432	4,750	5,049	7.2	9.5	5.3	4.8
\$1,500,000-2,000,000	5	2	2	1	7,351	3,214	3,269	1,753	14.2	4.8	3.7	1.7
\$2,000,000-3,000,000	-	1	2	3	-	2,211	4,413	7,088	-	3.3	4.9	6.7
\$3,000,000-5,000,000	-	3	-	2	-	11,487	-	8,247	-	17.0	-	7.8
\$5,000,000 & over	1	1	3	4	24,146	30,165	53,325	67,912	46.8	44.6	59.6	64.1
Not stated	2	4	9	12	2,375	247	8,735	802	4.6	0.4	9.8	0.7
Totals:	65	74	80	86	51,642	67,507	89,376	105,945	100.0	100.0	100.0	100.0

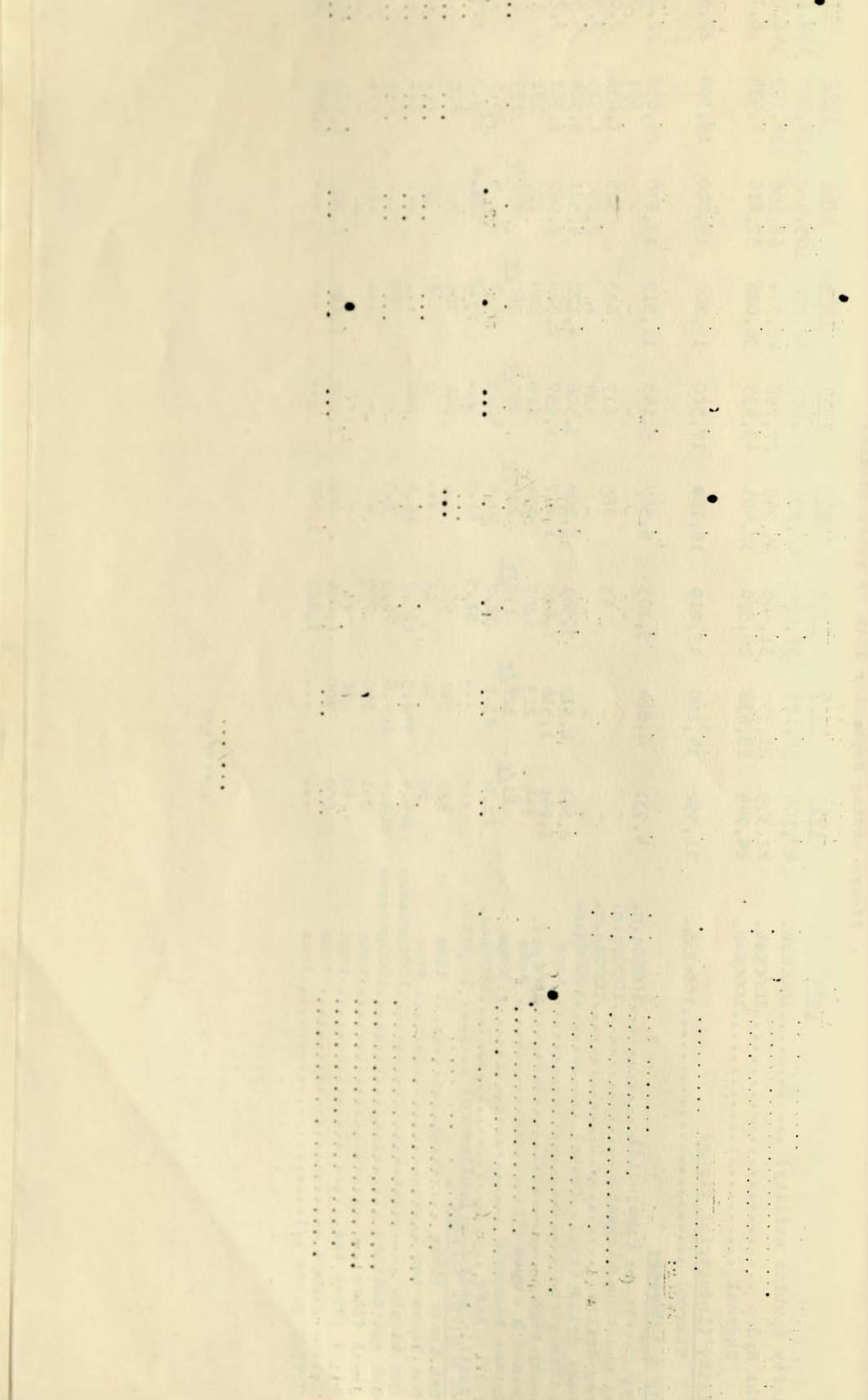
Source: Central Statistical Office.

(Including Eritrea Province)

(Years ending September 10th of years stated)

	Unit	1955	1956	1957	1958	1959	1960	1961	1962	1963/p
Electricity (public utility)	1000kwh.	47,104	50,188	58,036	63,231	71,203	82,770	105,922	132,626	154,200
Of which: Hydro	1000kwh.	22,359	21,350	31,446	25,740	27,768	46,744	68,106	128,192	146,042
Thermal	1000kwh.	24,745	28,838	26,570	37,491	43,435	36,026	37,816	4,434	8,147
<u>Electricity (Industrial firms)</u>										
Thermal	1000kwh.	11,392	14,200	15,219	16,100	17,500	19,200	19,200	19,300	22,500
<u>Textiles & Knitwear:</u>										
Grey Sheetings (Abujedid)	1000sq.m.	4,931	4,824	5,203	5,567	5,143	11,917	15,430	23,658	22,879
Bed sheeting (bleached)	1000sq.m.	-	-	-	-	-	-	-	671	727
Grey drills	1000sq.m.	-	-	43	265	617	633	525	1,038	2,035
Khaki drills (incl. fents)	1000sq.m.	-	-	-	-	424	-	2,090	1,719	3,795
Cotton yarns	tons	2,061	2,332	3,541	3,208	3,506	4,178	4,521	5,724	5,503
Gunny bags	1000pcs.	1,040	1,514	1,623	1,817	1,957	2,326	2,567	3,362	3,784
Twines & ropes etc.	tons	254	213	207	174	176	209	200	131	110
Cotton blankets	tons	81/r	126/r	158/r	200/r	200/r	260/r	231/r	199	212
Felt hats	1000pcs.	21.0	23.0	22.7	30.8	42.9	36.7	29.4	26.5	...
Woolen knitwear (pullovers)	1000pcs.	51.5	51.6	...	94.2	121.4	108.3	119.6
<u>Fibres & Misc. thereof</u>										
Dum leave fibre	tons	320	340	516	...	744	706	797	800	...
Dum leave tow	tons	50	54	68	...	7	6	38
Dum blanks	1000grosses	945.4	922.3	190.2	26.4	262
Dum nut buttons	1000grosses	204.4	204.6	76.3	3.5	-	49
Sisal fibre	tons	351	350	700	-	-
Sisal fibre tow	tons	60	10	-	-	-	-	-	-	-
Cotton ginned	tons	900	900	1,004	900	1,200	1,100	1,200	1,160	...
Cotton seeds	tons	1,822	1,800	1,900	...

.../...



(Including Eritrea province)

(Years ending September 10th of years stated)

	Unit	1955	1956	1957	1958	1959	1960	1961	1962	1963/p
Foods:										
Wheat flour	tons	19,015	23,011	20,402	19,991	17,800	17,000	20,700	22,550	23,020/p
Macaroni	tons	2,112	2,696	2,850	2,195	2,039	2,240	2,517	3,033	3,264/p
Biscuits	tons	73	103	114	94	96	76	87	107	107/p
Vegetable oils	tons	5,304	4,558	4,242	3,090	4,170	5,404	5,400	4,756	...
Sugar refined	tons	15,877	16,181	26,064	32,530	35,867	39,859	37,588	39,941	59,212
Sweets	quintals	-	-	-	-	-	-	-	4,717	5,345
Cubes of sugar	quintals	-	-	-	-	-	-	-	-	4,731
Tomatoes canned	tons	50	177	163	144	167	211	221	230	...
Peas & beans canned	tons	21	46	101
Yolk	tons	298	211	196	298	230	250	355	412	...
Albumin	tons	50	38	39	43	31	32	59	57	...
Yolk & albumin frozen	Qls.	907	-	-	-	-	-	7	-	...
Pasteurised milk*	1000litres.	1,377	1,492	1,500	1,324	1,360	1,616	1,595	1,693	1,712
Cheese	Qls.	84	...	-	...	125
Butter	Qls.	43	75
Meat frozen	tons	1,598	123	-	800	1,100	1,200	820	1,003	1,200
Meat Canned	tons	1,733	2,567	1,480	2,050	2,350	5,137	3,955/p	3,332	3,100
Sausages & inner organs	tons	115	35	-	-	-	26	28	33	...
Bacon & hams	tons	40	41	42	...	37	34	40	37	...
Salt alimentary	tons	99,002	102,460	108,730	145,945	13,155	140,625	135,225	197,650	255,100
Salt Industrial	tons	82,070	29,832	54,925	5,500	11,678				
Coffee roasted & ground	tons	-	-	-	-	20	22	25	30/p	...
Industrial fat	tons	120	-	218	450	...	108	...
Beverages and Tobacco:										
Cigarettes	1000pcs.	197,715	262,241	301,608	286,226	335,193	356,536	366,918	380,019	389,769/p
Cigars	1000pcs.	...	190	188	202	194	125	115	105	...
Cut & chewing tobacco	tons	...	187	72	65	57	50	50	48	...
Beer	hectolitres.	38,994	41,780	42,139	51,031	51,962	66,743	85,031	73,793	98,384
Alcohol	hectolitres.	5,777	4,639	3,868	n.a.	4,689	4,767	4,147	4,434	...
Wines	hectolitres.	8,898	12,906	15,463	14,393	17,424	18,711	21,526	23,850	...
Lemonades	1000btl.	7,975	6,451	5,485	5,941	5,544	11,372	11,100	15,081	...
Mineral water, soda	1000btl.	5,288	3,381	4,284	5,342	3,885	7,043	5,855	8,451	9,000/p
Liquors	hectolitres.	3,412	3,837	3,597	4,636	4,558	7,384	7,115	8,965	...

* Excluding milk pasteurised in the 13 provinces.

Statement of the Board of Directors of the [Company Name]

Item	1911	1912	1913	1914	1915	1916	1917	1918	1919	1920	1921	1922	1923	1924	1925	1926	1927	1928	1929	1930	Total
Assets	1000	1200	1500	1800	2000	2200	2500	2800	3000	3200	3500	3800	4000	4200	4500	4800	5000	5200	5500	5800	6000
Liabilities	500	600	700	800	900	1000	1100	1200	1300	1400	1500	1600	1700	1800	1900	2000	2100	2200	2300	2400	2500
Equity	500	600	800	1000	1100	1200	1600	1600	1600	1800	1800	2200	2300	2400	2600	2800	2900	3000	3400	3400	3500
Income	100	120	150	180	200	220	250	280	300	320	350	380	400	420	450	480	500	520	550	580	600
Expenses	80	90	110	130	140	150	170	190	200	210	230	250	260	280	300	320	330	350	370	400	420
Net Income	20	30	40	50	60	70	80	90	100	110	130	130	140	140	150	160	170	170	180	180	180
Dividends	10	12	15	18	20	22	25	28	30	32	35	38	40	42	45	48	50	52	55	58	60
Retained Earnings	10	18	25	32	40	48	55	62	70	78	85	92	100	100	110	110	120	120	120	120	120

These figures represent the total of the [Company Name]

(Including Eritrea province)

(Years ending september 10th of years stated)

	Unit	1955	1956	1957	1958	1959	1960	1961	1962	1963/p
Leather tanning & Shoes:										
Leather sole	tons	524	408	426	440	464	546	540	542	489
Leather upper	1000Sq.ft.	936	670	838	947	861	1,125	1,387	1,626	1,802
Tanned skins	1000Sq.ft.	318	419	341	34	-	-	-	-	-
Harness leather & belts	tons	17	17	20	62	63	60	18	10	55
Leather shoes	1000pairs.	93	220	227	239	230	238	253	268	319
Tanned leopard skins	No.	-	-	-	-	483	151	108
Building Materials:										
Cement	tons	21,769	26,866	22,508	31,701	24,665	28,251	29,905	44,380	33,374
Timber	Cu.mtrs.	13,000	16,300	13,000	13,900	14,000	11,100	11,800/r	14,300	...
Plywood	Cu.mtrs.	60**	...	-	-	-	50**	n.a.	987	1,506
Bricks* of clay	1000pcs.	7,140	3,670	4,025	5,500	7,425	7,500	7,520	7,497	7,700
Cement floor tiles	1000Sq.m.	43.0	15.0	27.3	25.5	33.0	36.0	...	52.0	35.7
Cement blocks & tubes	1000No.	228	240	115	127	227	317	...	324	232
Line hydrated	tons	640	2,515	2,507	4,538	5,488	4,408
Sea Products:										
Fish meal	tons	...	2,080	2,500	1,422	2,163	1,154	1,892/r	1,238	...
Trochas shells	tons	110	140	120	110	75	...	70
Mother of pearl	tons	10	10	10	10	10	...	10
Trochas discs & blanks	grosses	65.0	142.9	114.2	94.6
Trochas & pearl buttons	grosses	-	-	-	-	-
Miscellaneous:										
Soap laundry	tons	3,556	3,093	2,269	2,020	2,039/r	1,824/r	1,999/r	2,044/p	...
Soap toilet	tons	2	1	-	1	1	-	-	-	-
Soap oil	1000Lts.	...	162	50	282
Oxygen	Cu.mtrs.	37,165	29,647	31,203	30,915	30,307	38,922	45,025	50,544	55,043
Matches	1000boxes	9,258	11,799	14,662	15,534	14,946	13,847	18,095	14,082	11,361
Wrapping paper	tons	194	121	181	63)	326	105	...	130	...
Card-board	tons	15	10	9	45)
Cartons	tons	48	28	86	103	100	-	-
Nails	tons	200	571	549	495	1,056

* Production data for bricks (except 1955) do not include Eritrea.

** Converted from square metres into cubic metres by the factor of 1/300.

.../...

(Including Eritrea province)

(Years ending September 10th of years stated)

	Unit	1955	1956	1957	1958	1959	1960	1961	1962	1963/p
Ploughs	No.	40,000	7,500
Aluminium utensils	tons	30	19
Copper wires & cables	1000mtrs.	-	-	-	-	-	-	213
Vehicle batteries	No.	1,080	1,020	698	810	692	800
Glass bottles	1000pcs.	5,360	3,799	3,996	6,001	-	7,735	8,073	10,608	14,043
Distilled water	tons	-	-	-	-	-	12.1	12.3
Mosaics	Sq.m.	...	30,000	52,734	50,042	49,752	44,462	47,444	49,605	47,468
Carbon dioxide	tons	58	33	24	145	125
Rubber tyres recapped	No.	2,740	3,365	4,800/r	4,800/r
Buttons	1000grosses	190.0	209.7	75.4
Calcium sulphate	tons	-	-	-	-	-	3,250	2,500	2,800	3,200

Notes: /P = Preliminary /r Revised

Source: Central Statistical Office.

Table 3.

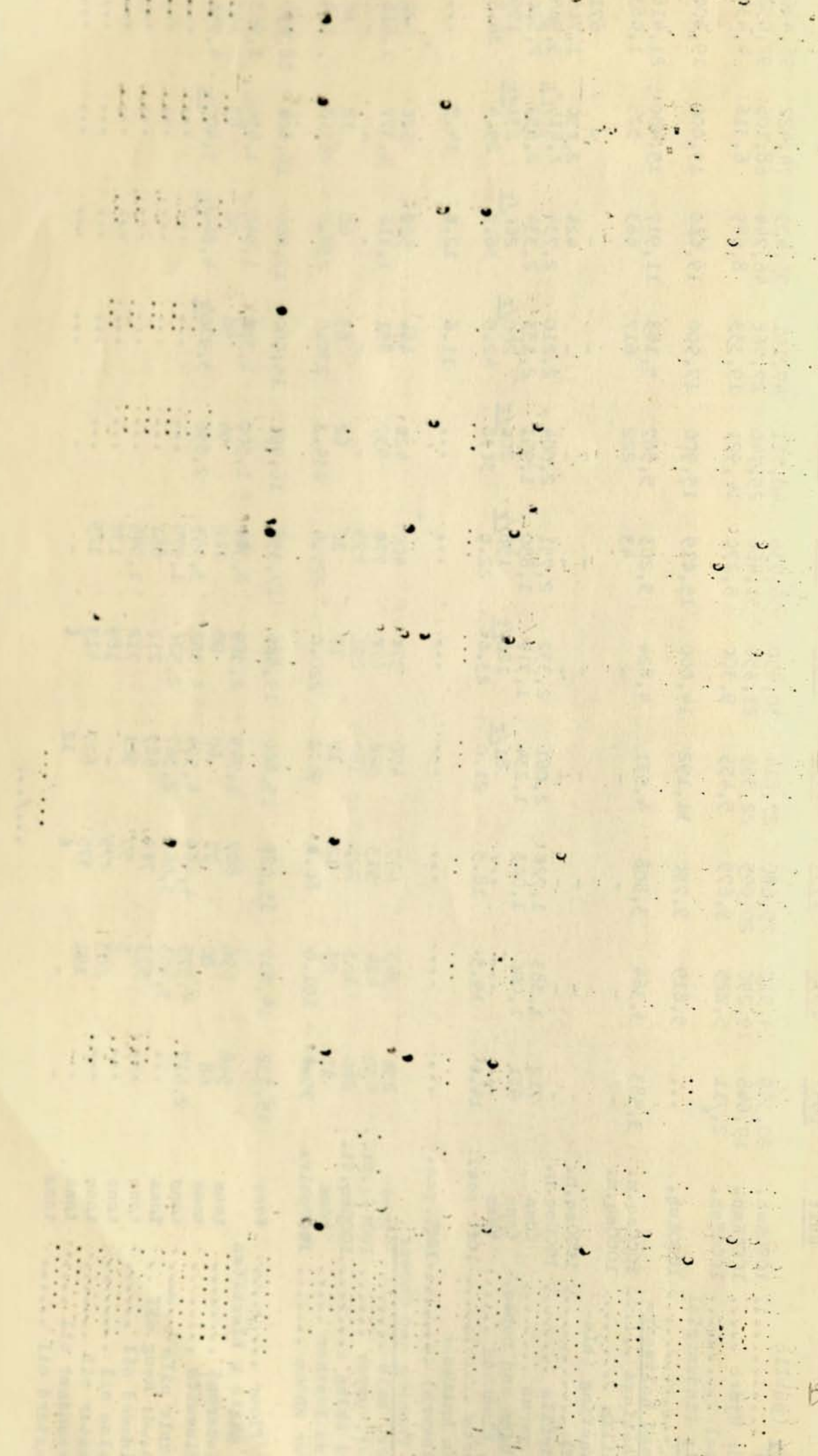
INDUSTRIAL (FACTORY) PRODUCTION OF THE 13 PROVINCES, 1952-63

Page 7.

(Years ending September 10th of years stated)

	Unit	1952	1953	1954	1955	1956	1957	1958	1959	1960	1961	1962	1963
Electricity (public													
Utility)	1000Kwh.	20,359	24,515	25,680	27,814	30,650	36,736	40,711	47,101	55,433	74,422	96,486	117,000
Of which: Hydro	1000Kwh.	17,648	19,290	20,005	22,359	21,350	31,466	25,740	27,768	46,744	68,106	92,052	108,847
Thermal	1000Kwh.	2,711	5,225	5,675	5,455	9,300	5,270	14,971	19,333	8,689	6,316	4,434	8,147
Electricity (industrial													
firms)	1000Kwh.	...	5,819	9,790	11,192	14,000	15,019	15,900	17,900	19,000	19,000	19,100	22,000
Textiles and Knitwear=													
Grey sheetings	1000sq.m.	3,583	3,364	3,808	4,931	4,824	5,203	5,567	5,143	11,917	15,430	21,418	20,243
Grey drills	1000sq.m.	-	-	-	-	-	43	222	617	663	525	1,083	2,083
Bed sheeting (bleached)	1000sq.m.	-	-	-	-	-	-	-	-	-	-	671	727
Khaki drills	1000sq.m.	-	-	-	-	-	-	-	-	424	2,790	1,719	3,008
Cotton yarns	tons	712	1,383	1,720	2,061	2,332	2,751	2,004	2,210	2,734	2,815/r	3,969	4,042
Gunny bags and ropes	tons	931	1,000	1,003	1,234	1,717	1,830	1,991	2,133	2,334	2,652	2,820	2,523
Cotton blankets	tons81/r	126/r	158/r	200/r	200/r	260/r	231/r	199	212
Felt hats	1000 pcs.	14.0	19.5	18.5	21.0	23.0	22.0	30.8	42.9	36.7	29.4	26.5	...
Woollen knitwear													
(pullovers)	1000 pcs.	11.6	12.0	14.5
Leather Tanning and Shoes:													
Leather, sole	tons	230	343	447	476	370	400	420	444	520	520	522	469
Leather, upper	1000sq.ft.	420	424	513	528	670	770	937	851	1,116	1,377	1,616	1,792
Tanned skins	1000sq.ft.	280	163	225	160	291	275	-	-	-	-	-	-
Harness leather	tons	15	23	12	17	17	20	62	63	60	18	10	52
Leather shoes	1000pairs	95.2	101.0	80.0	90.2	220.0	227.4	239.2	230.0	238.0	253.3	268	319
Foodstuffs:													
Wheat flour	tons	15,332	14,817	15,078	15,800	19,826	17,356	16,991	15,000	17,000	16,800	18,750	18,520
Wheat paste & biscuits:													
(a) Macaroni	tons	548	696	807	1,745	2,369	2,300	1,500	1,350	1,540	1,650	1,963	2,264
(a) Biscuits	tons	68	80	77	60	90	112	94	96	76	83	103	103
Vegetable oils	tons	2,617	4,375	4,469	4,594	4,052	3,939	2,890	3,970/r	4,844/r	5,400/r	4,756	...
Of which: Neug oil ..	tons	...	3,403	3,062	2,367	2,520	1,970
Linseed oil	tons	...	573	700	687	212	661
Colza oil	tons	...	5	57	901	712	1,046
Castor oil	tons	...	203	275	-	189	137
Groundnut oil	tons	...	191	375	627	413	125
Mustard oil	tons	-	-	6	12	6	-	-

.../...



	Unit	1952	1953	1954	1955	1956	1957	1958	1959	1960	1961	1962	1963/P
Sugar, crystal & molasses (excluding liquid)	tons	-	-	2,661	15,877	16,181	26,064	32,530	35,867	39,859	37,588	39,941	59,212
Canned tomatoes	tons	35	49	50	50	177	163	144	167	205	215	230/P	...
Coffee roasted & ground	tons	-	-	-	-	-	-	-	20	22	25	30/P	...
<u>Beverages and Tobacco:</u>													
Cigarettes	1000pcs.	83,259	94,552	112,107	127,715	186,310	235,043	238,096	294,613	314,126	332,744	349,769	359,769
Beer	hectolitres	6,284	11,298	14,866	12,665	10,924	5,272	11,397	15,022	23,088	32,191	34,080	47,200
Alcohol	tons	367	341	315	288	185	121	n.a.	171	244	258/r	263	...
Wines	hectolitres	4,430	3,679	4,140	4,180	7,782	9,730	10,020	12,683	13,561	16,840	16,470	...
Lemonades etc.	1000ltrs.	1,860	7,254	6,900	7,240	5,781	5,016	4,607	4,535	10,372	10,000	13,781	...
Mineral waters, soda	1000btl.	1,300	1,368	1,400	1,930	593	1,237	2,185	1,503	4,543	3,659	5,801	6,350
Grappa, aceto, etc.	hectolitres	155	193	225	276	862	4,715	4,830	5,850	...
<u>Building Materials:</u>													
Cement	tons	10,026	9,319	13,012	21,769	26,866	22,508	31,701	24,665	28,251	29,965	44,380	33,374
Hydrated lime	tons	...	509	1,377	2,628	2,954	1,179	2,295	2,315	2,507	4,538	5,488	4,408
Timber	cu.mtrs.	9,600	10,910	11,000	13,000	16,300	13,000	13,900	14,000	11,000	11,800/r	14,300	...
Plywood	cu.mtrs.	-	-	-	-	-	-	-	-	-	...	987	1,506
Bricks of clay	1000 pcs.	2,000	3,500	4,500	5,200	3,670	4,025	5,500	7,425	7,500	7,520	7,497	7,700
Cement floor tiles ...	1000sq.m.	22.3	12.8	26.8	13.0	15.0	27.3	25.5	32.9	36.0	...	52.0	53.7
Cement blocks & tubes.	thou.pcs.	...	39	150	224	240	115	127	227	317	...	324	232
Cement bricks	1000pcs.	-	-	-	-	-	100	101	214	213	168	167	168
<u>Miscellaneous:</u>													
Soap, Laundry	tons	2,000	2,221	2,500	3,210	2,712	2,113	1,852	1,758/r	1,824/r	1,999/r	1,844/r	...
Oxygen	cu.mtrs.	17,072	21,930	13,186	13,370	9,061	17,197	19,076	20,188	29,004	30,000	39,835	41,650
Hydrogen	cu.mtrs.	8,536	10,965	26,372	-	-	-	-	-	-	-	-	-
Carbon dioxide	tons	-	-	-	-	-	125.7	101.0
Distilled water	tons	-	-	-	-	-	12.1	12.3
Wires, cables, tubes	tons	-	-	-	-	-	-	213
Glasses (drinking) etc.	1000 pcs.	126	108	-	-	-	-	-	-	-	-	-	-
Rubber tyres re-treated	No.	-	-	-	264	1,340	1,400	2,800/r	2,800	-	-

Notes: P/ means preliminary and consequently subject to later revision.

n.a. = Note Available

r = Revised.

Source: Central Statistical Office, :

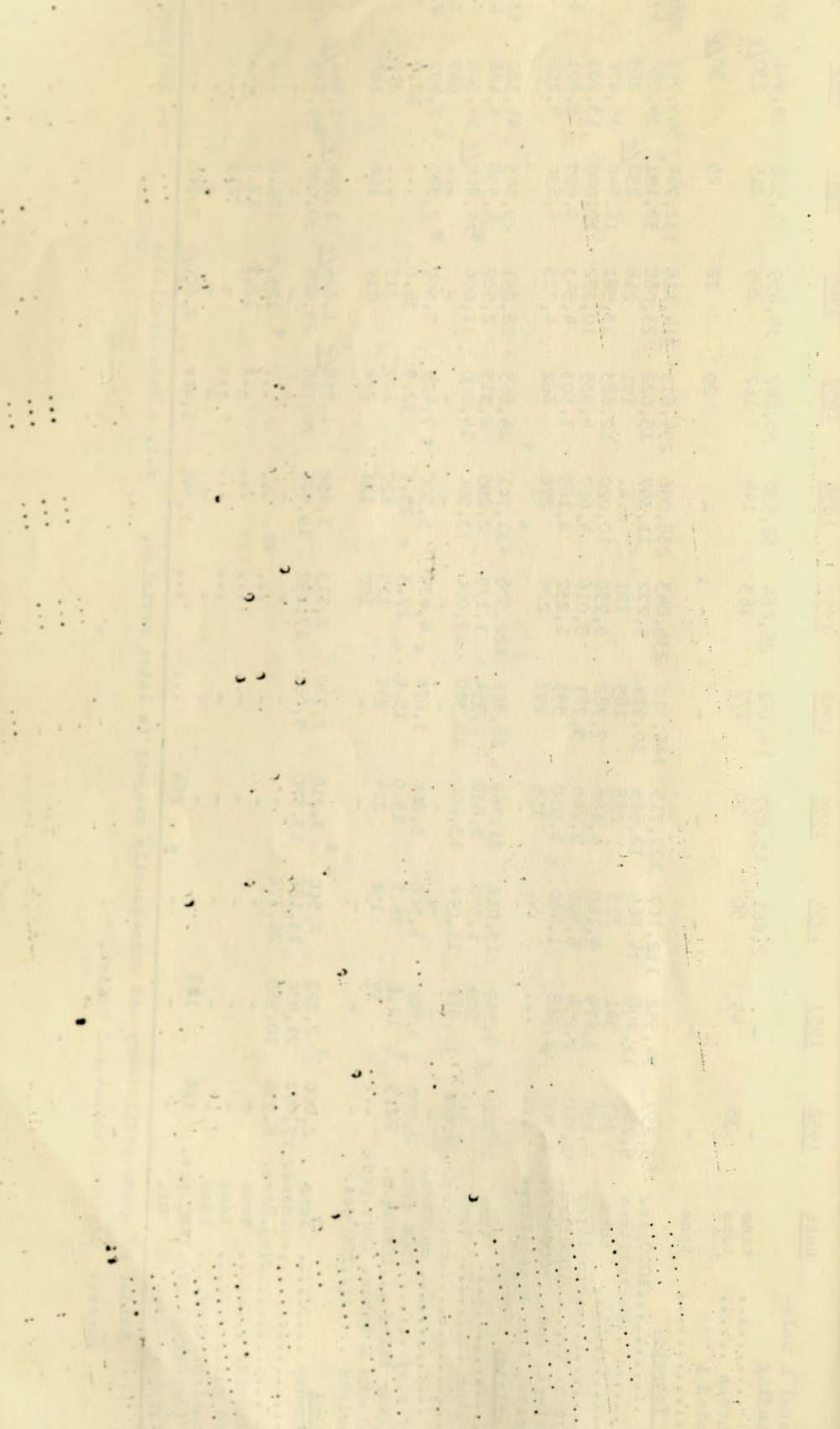


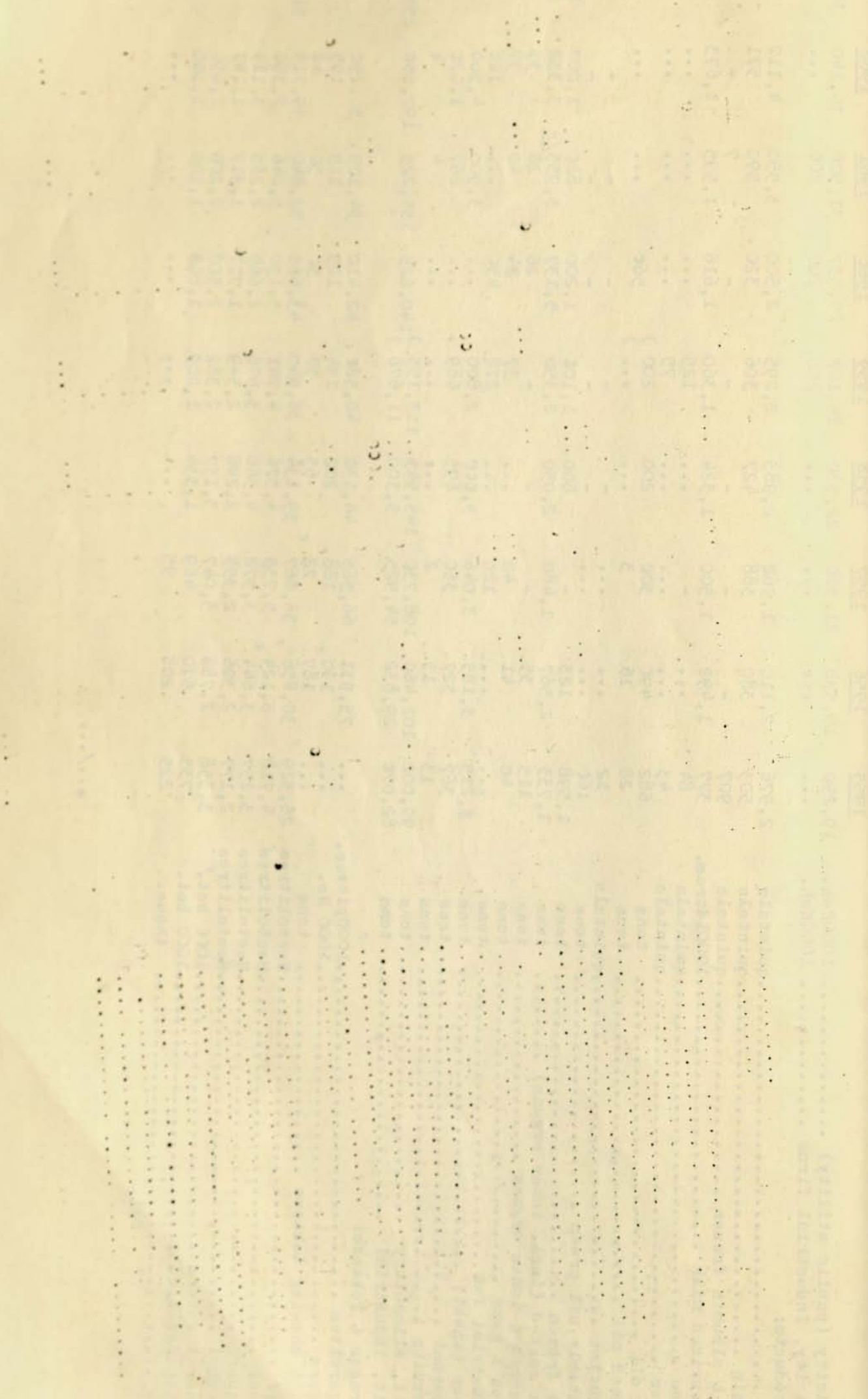
Table 4.

INDUSTRIAL (FACTORY) PRODUCTION OF ERITREA PROVINCE, 1955-1961

Page 9.

	1955	1956	1957	1958	1959	1960	1961	1962	1963/p
Electricity (public utility) 1000Kwh.	19,290	19,538	21,300	22,520	24,102	27,337	31,500	36,140	37,200
Electricity, Industrial firms 1000Kwh.	200	200	200	...	500
Food products:									
Yolk quintals	2,976	2,110	1,962	2,983	2,295	2,500	3,550	4,117	...
Albumin quintals	503	380	388	427	306	320	590	571	...
Yolk & albumin frozen quintals	907	-	-	-	-	-	7	-	...
Pasteurized milk 1000litres.	377	1,492	1,500	1,324	1,360	1,616	1,595	1,693	1,712
Cheese quintals	84	...	-	...	125
Butter quintals	43	75
Neug oil tons	682	490	300	200	200) 560
Linseed oil tons	28	16	3				
Margarine quintals	12	-	-	-	-	-	-
Vegetable oil cream tons	160	-	-	-	-	-	-
Meat frozen tons	1,598	123	-	800	1,100	1,200	820	1,003	1,200
Meat canned (incl. inner organs) tons	1,733	2,567	1,480	2,050	2,350	5,137	3,955/r	3,332	3,100
Sausages & inner organs tons	115	35	-	-	-	26	28	33	...
Bacon & hams tons	40	41	42	...	37	24	40	37	...
Industrial fat tons	120	...	218	450	...	108	...
Flour (wheat) tons	3,215	3,185	3,046	3,600	2,800	...	3,900	4,500	...
Macaroni tons	367	327	350	695	689	...	867	1,070	...
Biscuits tons	13	13	2	4	4	...
Salt, alimentary tons	99,002	102,460	108,730	145,945	113,155) 140,625	135,225	197,650	255,100
Salt, industrial tons	82,070	29,832	54,925	5,500	11,678				
Beverages & Tobacco:									
Cigarettes 1000pieces.	...	75,931	66,565	48,130	40,580	42,410	34,175	30,250	...
Cigars 1000 No.	...	190	188	202	194	125	115	105	...
Cut & chewing tobacco tons	...	187	72	65	57	50	50	48	...
Beer Hectolitres	26,329	30,856	36,867	39,634	36,940	43,655	52,840	39,713	51,184
Wines Hectolitres	4,718	5,124	5,733	4,376	4,741	5,150	5,046	7,380	...
Liquors Hectolitres	3,257	3,644	3,372	4,360	3,696	2,669	2,285	3,115	...
Alcohol Hectolitres	2,177	2,326	2,355	2,248	2,549	1,717	1,317	1,147	...
Mineral waters 1000 bot.	3,358	2,788	3,047	3,157	2,382	2,500	2,200	2,650	...
Lemonades etc. 1000 bot.	735	670	469	1,334	1,009	1,000	1,100	1,300	...
Ice thous.	225	208	95

.../...



	1955	1956	1957	1958	1959	1960	1961	1962	1963/p
Trocas discs & blanks1000grosses	65.0	142.9	114.2	94.6
Trocas & pearl buttons1000grosses	190.0	209.7	75.4
Sole leather tons	48	38	26	20	20
Upper leather1000 sq.ft.	408	...	68	10	10
Tanned skins1000 sq.ft.	158	128	66	34
Leather shoes pairs	3,000	...	-	-	-	-	-	-	-
Glass bottles & glasses1000 No.	5,360	3,799	3,976	6,001	-	7,735	8,073	10,608	14,043
Parcelain mosaics sq.m.	...	30,000	52,734	50,042	49,752	44,462	47,444	49,605	47,468
Wollen knitwear pcs.	41,075	41,622	...	70,213	92,383	93,321	102,998
Rubber tyres recapped No.	1,400	1,965
Calcium sulphate tons	-	-	-	-	-	3,250	2,500	2,800	3,200

Notes: P/ Preliminary and subject to later revision.

e/ Estimated.

"..." Not yet available.

Sources: Central Statistical Office.

DATE	DESCRIPTION	AMOUNT	BALANCE
1901	Jan 1		100.00
1901	Jan 15	50.00	50.00
1901	Feb 1	25.00	25.00
1901	Mar 1	10.00	15.00
1901	Apr 1	75.00	90.00
1901	May 1	30.00	60.00
1901	Jun 1	40.00	20.00
1901	Jul 1	15.00	5.00
1901	Aug 1	20.00	25.00
1901	Sep 1	10.00	15.00
1901	Oct 1	35.00	50.00
1901	Nov 1	20.00	30.00
1901	Dec 1	15.00	15.00
1902	Jan 1	10.00	5.00
1902	Feb 1	5.00	0.00
1902	Mar 1	15.00	15.00
1902	Apr 1	10.00	5.00
1902	May 1	25.00	30.00
1902	Jun 1	15.00	15.00
1902	Jul 1	30.00	45.00
1902	Aug 1	20.00	25.00
1902	Sep 1	10.00	15.00
1902	Oct 1	35.00	50.00
1902	Nov 1	20.00	30.00
1902	Dec 1	15.00	15.00

AMOUNT PAID AS DEBIT TO THE ACCOUNT IN 1901

AMOUNT PAID AS DEBIT TO THE ACCOUNT IN 1902

AMOUNT PAID AS DEBIT TO THE ACCOUNT IN 1903

AMOUNT PAID AS DEBIT TO THE ACCOUNT IN 1904

AMOUNT PAID AS DEBIT TO THE ACCOUNT IN 1905

AMOUNT PAID AS DEBIT TO THE ACCOUNT IN 1906

AMOUNT PAID AS DEBIT TO THE ACCOUNT IN 1907

AMOUNT PAID AS DEBIT TO THE ACCOUNT IN 1908

AMOUNT PAID AS DEBIT TO THE ACCOUNT IN 1909

AMOUNT PAID AS DEBIT TO THE ACCOUNT IN 1910

AMOUNT PAID AS DEBIT TO THE ACCOUNT IN 1911

AMOUNT PAID AS DEBIT TO THE ACCOUNT IN 1912

AMOUNT PAID AS DEBIT TO THE ACCOUNT IN 1913

AMOUNT PAID AS DEBIT TO THE ACCOUNT IN 1914

AMOUNT PAID AS DEBIT TO THE ACCOUNT IN 1915

AMOUNT PAID AS DEBIT TO THE ACCOUNT IN 1916

AMOUNT PAID AS DEBIT TO THE ACCOUNT IN 1917

AMOUNT PAID AS DEBIT TO THE ACCOUNT IN 1918

AMOUNT PAID AS DEBIT TO THE ACCOUNT IN 1919

AMOUNT PAID AS DEBIT TO THE ACCOUNT IN 1920

GROSS AND NET OUTPUT (i.e. Value added)
OF MANUFACTURING INDUSTRIES, 1962
 (for the year ended Sep. 10, 1962) ⁽⁴⁾
 (In Eth. \$1,000)

Industrial group	The 13 Provinces		Eritrea Province		Total, Ethiopia		Percentage distribution, 1962	
	Gross	Net.	Gross	Net.	Gross	Net.	Gross	Net.
A. Foods, sub-total ...	28,554	10,932	10,353	4,820	38,907	15,752	30.39	25.95
1. Slaughtering & meat preparations	304	264	4,048	1,541	4,352	1,705		
2. Dairy products	n.a.	n.a.	857	777	857	777		
3. Egg products	-	-	288	271	288	271		
4. Sugar, tomato canning	14,420	6,558	-	-	14,420	6,558		
5. Salt ⁽²⁾	-	-	2,180	459	2,180	459		
6. Edible oils & by-products	5,244	703	1,142	897	6,386	1,600		
7. Flour, macaroni, biscuits	8,593	1,536	1,837	874	10,430	2,410		
B. Beverages, Sub-total	5,966	4,300	5,229	1,885	11,195	6,185	8.75	10.25
1. Alcohol, beer, liquors	3,800	3,100	3,706	1,072	7,506	4,172		
2. Wines	693	375	1,088	605	1,781	980		
3. Soft drinks & carbonated water	1,473	825	435	208	1,908	1,033		
D. Tobacco Manufactures.	3,448	2,673	690	529	4,138	3,202	3.20	5.30
D. Textiles, sub-total .	42,426	19,200	11,635	4,812	54,061	24,012	42.26	39.68
1. Spinning, weaving and finishing	36,884	16,763	9,382	3,969	46,266	20,732		
2. Knitting etc.	1,318	414	1,321	578	2,639	992		
3. Sacks, cordage, rope & twine	4,224	2,023	932	265	5,156	2,288		
E. Footwear & leather tanning	4,663	1,902	-	-	4,663	1,902	3.67	3.14
F. Saw mills, planing mills, plywood ...	1,479	904	-	-	1,479	904	1.17	1.50
G. Furniture & fixture..	1,888	793	-	-	1,888	793	1.48	1.32
H. Printing & publishing ⁽³⁾	1,990	745	n.a.	n.a.	1,990	745	1.56	1.16
I. Chemicals & Chemical products	788	519	455	215	1,243	734	0.94	1.16
1. Oxygen & carbon dioxide	788	519	181	69	969	588		
2. Matches	-	-	274	146	274	146		
J. Non-metallic mineral products	4,196	3,257	2,391	1,365	6,587	4,622	5.17	7.60
1. Bricks	283	218	251	171	534	389		
2. Glass Mfrs., mosaics	-	-	2,060	1,123	2,060	1,123		
3. Cement	3,913	3,039	79	71	3,992	3,110		
K. Miscellaneous mfrs. .	800 ⁽⁵⁾	550 ⁽⁵⁾	1,928	1,438	2,728	1,988	1.79	2.64
1. Paper	-	-	84	52	84	52		
2. Buttons	-	-	424	383	424	383		
3. Fishmeal	-	-	440 ⁽⁵⁾	370 ⁽⁵⁾	440	370		
4. Other	800 ⁽⁵⁾	550 ⁽⁵⁾	980	633	1,780	1,183		
Total mfrs. ⁽⁴⁾ 1962	96,198	45,775	32,679	15,063	128,877	60,838	100.00	100.00
Total, mfrs. 1951	82,608	35,891	31,804	13,131	114,412	49,022		
Total, mfrs. 1952	78,542	33,670	29,468	11,248	108,010	44,918		
Total, mfrs. 1953	64,243	26,678	24,270	9,132	88,513	35,810		
Total, mfrs. 1958	59,672	26,372	25,671	9,086	83,343	35,458		
Total, mfrs. 1957	62,394	27,541	20,192	7,298	82,586	34,839		

Notes: (1) n.a. = not available.

(2) Excluding production of rock salt in Danakil plains, which amounts to about 20,000 tons per annum.

(3) Excluding Berhanena Selam Printing Press in Addis Ababa and all the printing presses in Asmara.

(4) Excluding coffee and grain cleaning and grading.

(5) Estimated.

Year	Month	Day	Time	Location	Event	Remarks
1911	Jan	1	10:00	St. Paul	Service	
1911	Jan	2	10:00	St. Paul	Service	
1911	Jan	3	10:00	St. Paul	Service	
1911	Jan	4	10:00	St. Paul	Service	
1911	Jan	5	10:00	St. Paul	Service	
1911	Jan	6	10:00	St. Paul	Service	
1911	Jan	7	10:00	St. Paul	Service	
1911	Jan	8	10:00	St. Paul	Service	
1911	Jan	9	10:00	St. Paul	Service	
1911	Jan	10	10:00	St. Paul	Service	
1911	Jan	11	10:00	St. Paul	Service	
1911	Jan	12	10:00	St. Paul	Service	
1911	Jan	13	10:00	St. Paul	Service	
1911	Jan	14	10:00	St. Paul	Service	
1911	Jan	15	10:00	St. Paul	Service	
1911	Jan	16	10:00	St. Paul	Service	
1911	Jan	17	10:00	St. Paul	Service	
1911	Jan	18	10:00	St. Paul	Service	
1911	Jan	19	10:00	St. Paul	Service	
1911	Jan	20	10:00	St. Paul	Service	
1911	Jan	21	10:00	St. Paul	Service	
1911	Jan	22	10:00	St. Paul	Service	
1911	Jan	23	10:00	St. Paul	Service	
1911	Jan	24	10:00	St. Paul	Service	
1911	Jan	25	10:00	St. Paul	Service	
1911	Jan	26	10:00	St. Paul	Service	
1911	Jan	27	10:00	St. Paul	Service	
1911	Jan	28	10:00	St. Paul	Service	
1911	Jan	29	10:00	St. Paul	Service	
1911	Jan	30	10:00	St. Paul	Service	
1911	Jan	31	10:00	St. Paul	Service	

Industrial Group	Fixed capital assets (as of Sept. 1962)			Capital expenditure in 1962		
	Total	The 13 Provinces	Eritrea Province	Total	The 13 Provinces	Eritrea Province
A. Food products: .	71,421	56,949	14,470	7,282	6,755	527
1. Slaughtering & preparations of meat	2,126	n.a.	2,126	149	49	100
2. Dairy products.	645	n.a.	645	58	-	58
3. Egg products ...	418	-	418	7	-	7
4. Flour, macaroni & biscuits	6,804	5,659	1,151	205	205	-
5. Sugar, tomato canning	48,828	48,828	-	6,469	6,469	-
6. Salt	9,644	-	9,644	324	-	324
7. Edible Oils & by-products	2,950	2,464	486	70	32	38
B. Beverages:	7,816	5,132	2,684	916	890	27
1. Alcohol Distilleries & Breweries	4,665	3,383	1,282	436	436	-
2. Wines	1,116	176	940	96	88	8
3. Soft drinks & carbonated water ...	2,035	1,573	462	384	365	19
C. Tobacco Manufacture	1,511	1,376	135	66	66	-
D. Manufacture of Textiles	43,726	32,590	11,135	13,290	10,933	2,359
1. Spinning, weaving & finishing	36,385	27,237	9,148	9,880	9,348	532
2. Knitting mills ..	4,043	3,793	250	1,610	1,520	90
3. Sacks, cordage, rope & twine.....	3,300	1,563	1,737	1,800	65	1,737
E. Footwear & leather tanning	2,355	2,155	200(3)	120	120	-
F. Saw mills, planing mills & plywood ..	1,178	1,178	-	50	50	-
G. Furniture & fixtures	477	477	-	55	55	-
H. Printing & publishing /2	715	715	n.a.	158	158	n.a.
I. Chemicals & chemical products	1,863	1,001	862	62	40	22
1. Oxygen & carbon dioxide	1,195	1,001	194	50	40	17
2. Matches	668	-	668	5	-	5
J. Non-metallic mineral products	5,383	2,852	2,531	1,313	1,049	264
1. Bricks	1,308	99	1,209	10	10	-
2. Cement	2,849	2,753	96	1,201	1,039	162
3. Glass manuf. materials	1,225	-	1,225	102	-	102
K. Miscellaneous manuf.	3,625	1,520/3	2,105	1,589	1,350/3	239
1. Paper	96	-	96	-	-	-
2. Buttons	900/3	-	900/3	-	-	-
3. Fishmeal	140	-	140	150	-	150
4. Others	2,489	1,520/3	969	1,439	1,350/3	89
Total, manuf. 1962	140,074	105,945	34,129	24,904	21,466	3,438
Total, manuf. 1961	119,555	89,376	30,179	32,343	23,835	8,508
Total, manuf. 1960	91,273	67,507	23,766	18,206	14,991	3,216
Total, manuf. 1959	78,425	58,839	19,586	9,768	8,515	1,253
Total, manuf. 1958	71,554	51,642	19,912	6,129	4,994	1,135
Total, manuf. 1957	61,177	44,438	16,739	4,971	4,000	971

Notes: (1) Excluding coffee and grain cleaning.
 (2) Excluding the Berhanena Selam Printing Press in Addis Ababa and the printing presses in Asmara.
 (3) Estimated.

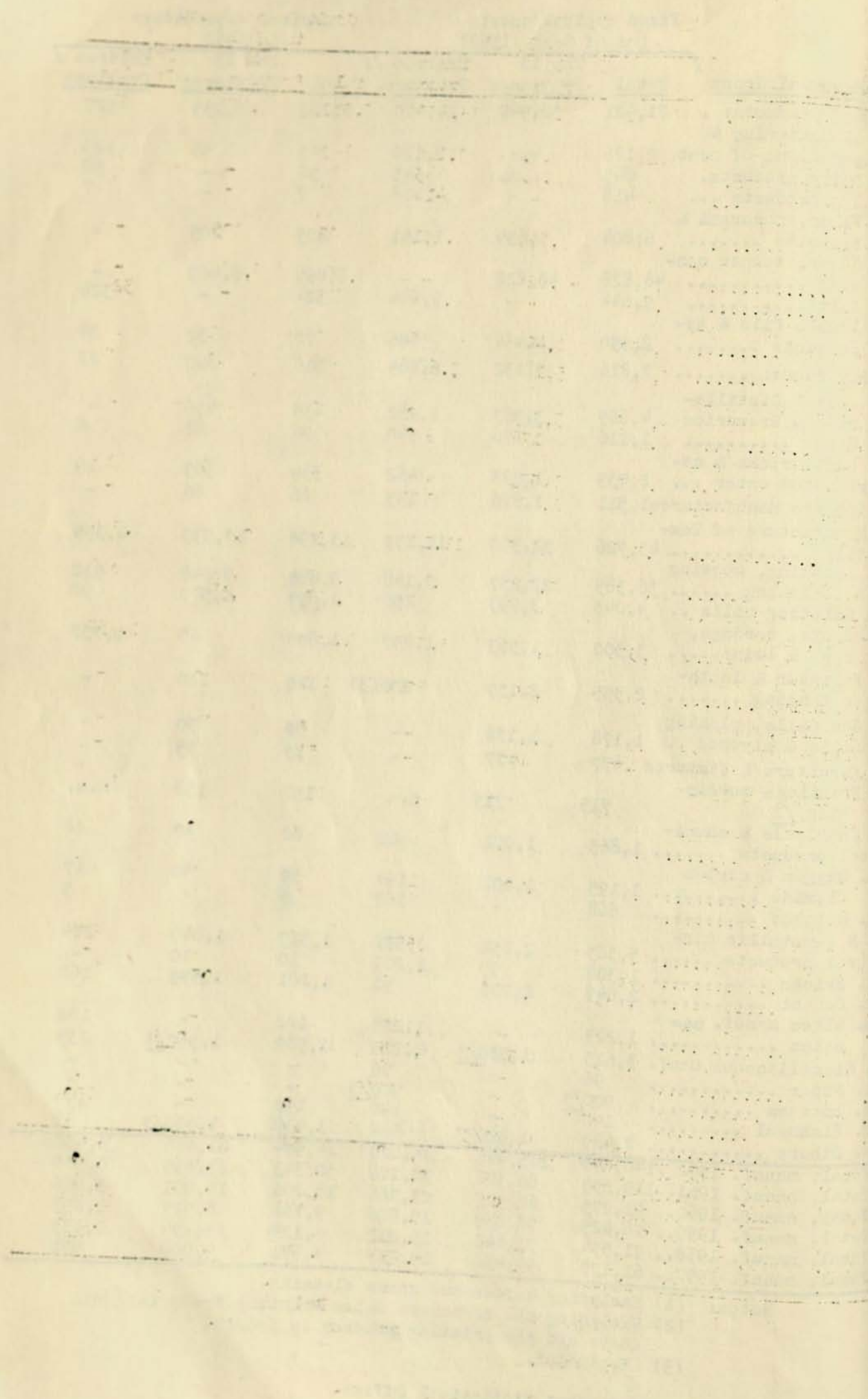


Table 7.

Industrial Group	Total			Plant & machinery		Vehicles		Land & buildings	
	Empire of Ethiopia	The 13 Provinces	Eritrea/Province	The 13 Provinces	Eritrea/Province	The 13 Provinces	Eritrea/Province	The 13 Provinces	Eritrea/Province
A. Food products:	71,253	56,946	14,308	26,943	5,860	4,718	1,675	25,284	6,773
1. Slaughtering & preparations of meat	2,126	-	2,126	-	1,216	-	69	-	841
2. Dairy products	645	n.a.	645	n.a.	362	n.a.	40	n.a.	242
3. Egg products	418	-	418	-	192	-	56	-	170
4. Flour, Macaroni & biscuits ...	6,804	5,653	1,151	3,056	1,011	230	12	2,367	128
5. Sugar, tomato canning.....	48,828	48,828	-	26,740	-	-	-	22,088	-
6. Salt	9,644	-	9,644	-	3,567	-	802	-	5,274
7. Edible oils & by-products	2,950	2,464	486	1,493	362	142	7	829	117
B. Beverages:	8,119	5,132	2,987	2,730	1,489	624	461	1,778	1,037
1. Alcohol Distilleries & Breweries	4,988	3,383	1,605	2,007	763	302	359	1,074	483
2. Wines	1,116	176	920	97	564	71	38	8	318
3. Soft drinks & Carbonated water	2,035	1,573	462	625	162	252	64	696	236
C. Tobacco Manufactures:	1,511	1,376	135	715	34	115	-	546	101
D. Manufacture of Textiles	43,745	32,590	11,155	23,100	7,325	255	293	9,235	3,536
1. Spinning, weaving & finishing	36,382	27,234	9,148	19,172	5,990	230	283	7,832	2,875
2. Knitting mills, etc.	4,044	3,793	251	2,910	97	14	4	869	149
3. Sacks, cordage, rope & twine .	3,319	1,563	1,756	1,018	1,238	11	6	534	512
E. Footwear & leather Tanning:	2,360	2,155	205/3	545	45/3	37	5/3	1,573	1 155/3
F. Saw mills, planing mills & plywood	1,178	1,178	-	817	-	65	-	296	-
G. Furniture & fixtures:	477	477	-	174	-	46	-	256	-
H. Printing & publishing/2	715	715	n.a.	598	n.a.	29	n.a.	88	n.a.
I. Chemical & chemical products:...	1,863	1,001	862	357	527	320	99	424	236
1. Oxygen & carbon dioxide	1,195	1,001	194	357	89	320	18	424	87
2. Matches	668	-	668	-	438	-	80	-	149

.../...

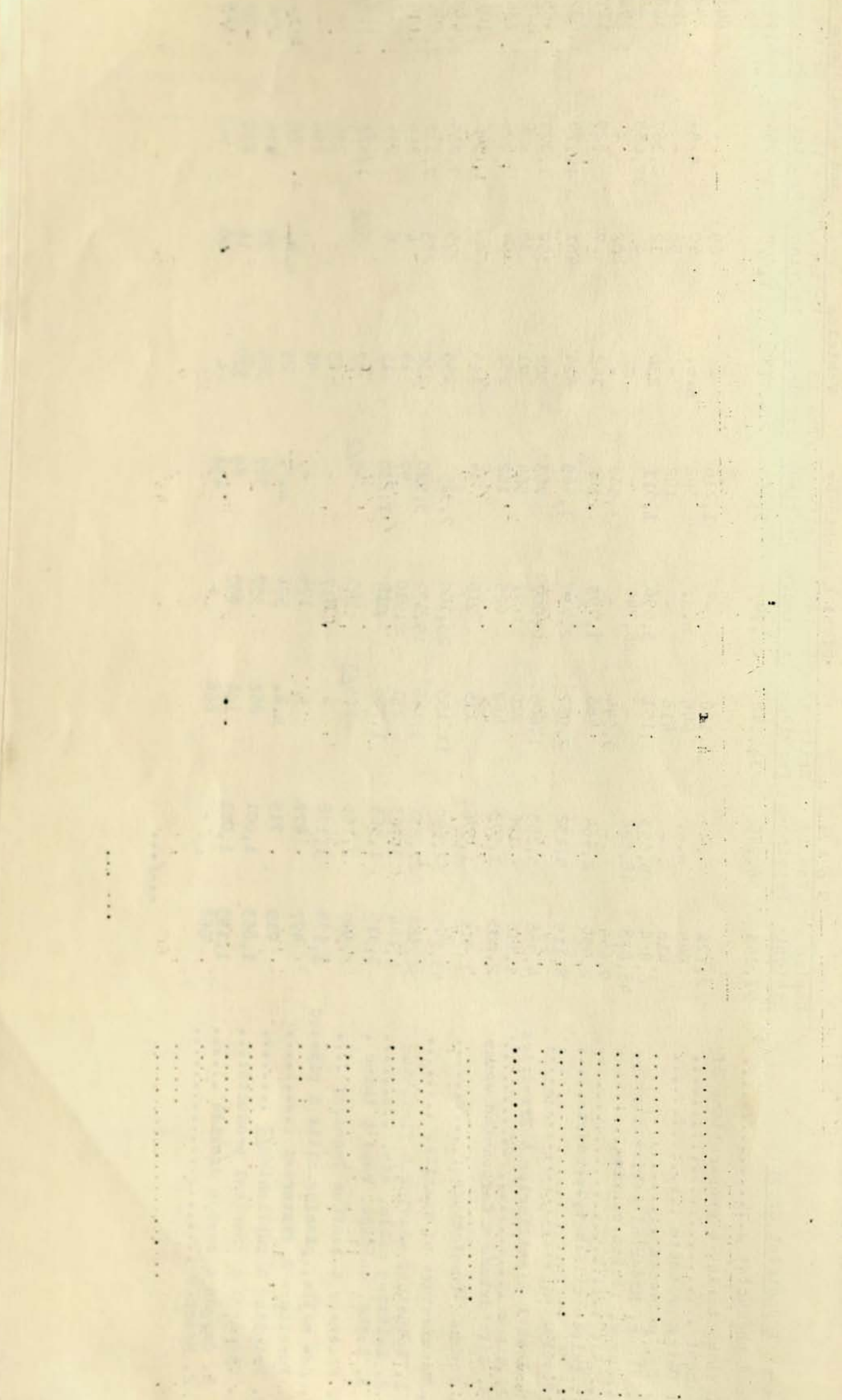


Table 7. Composition of Fixed Capital Assets of Manufacturing Industries (as of Sept. 10, 1962) (Contd.)
(in Eth. \$ 1,000)

Industrial group	T o t a l			Plant & machinery		Vehicles		Land & buildings	
	Empire of Ethiopia	The 13 Provinces	Eritrea/Province	The 13 Provinces	Eritrea/Province	The 13 Provinces	Eritrea/Province	The 13 Provinces	Eritrea/Province
J. Non-metallic mineral products:..	5,365	2,852	2,513	1,103	1,314	89	25	1,659	1,175
1. Bricks	1,308	99	1,209	99	727	-	8	-	474
2. Cement	2,832	2,753	79	1,005	49	89	-	1,659	30
3. Glass Manufactures, mosaics .	1,225	-	1,225	-	537	-	17	-	671
K. Miscellaneous Manufactures:	3,435	1,470/3	1,965	900/3	1,044	70/3	84	500/3	837/3
1. Paper	96	-	96	-	69	-	4	-	23
2. Buttons	900/3	-	900/3	-	360/3	-	20/3	-	520/3
3. Fishmeal	138	-	138	-	127	-	11	-	-
4. Others	2,439	1,470/3	969	900/3	615	70/3	60	500/3	294
Total Manufacturing, 1962:.....	140,074	105,945	34,129	62,327	17,638	2,023	2,642	41,595	13,849
Total Manufacturing, 1961:.....	119,559	89,376	30,179	47,013	15,661	1,893	1,486	40,469	13,031
Total Manufacturing, 1960:	92,802	69,055	23,747	38,026	11,625	1,341	1,329	29,687	10,795
Total Manufacturing, 1959:	78,425	58,839	19,586	31,941	9,031	1,335	1,038	25,558	9,517
Total Manufacturing, 1958:	71,554	51,642	19,912	26,458	8,687	1,340	1,188	23,844	10,035
Total Manufacturing, 1957:	61,177	44,438	16,739	27,696	7,386	1,123	1,082	15,619	8,271

Notes: (1) Excluding coffee and grain cleaning.

(2) Excluding Berhanena Selam Printing Press in Addis Ababa and all the printing presses in Asmara.

(3) Estimated.

/P = Provisional.

Source: Central Statistical Office.

UNITED STATES DEPARTMENT OF AGRICULTURE

PLANT INDUSTRY

(1) *...*

(2) *...*

(3) *...*

(4) *...*

(5) *...*

(6) *...*

(7) *...*

(8) *...*

(9) *...*

(10) *...*

(11) *...*

(12) *...*

(13) *...*

(14) *...*

(15) *...*

(16) *...*

(17) *...*

(18) *...*

(19) *...*

(20) *...*

Table 8. OPERATING STATISTICS OF MANUFACTURING INDUSTRY IN THE 13 PROVINCES, 1962.
(for the year ended Sep. 10, 1962.)

Industrial group	No. of establishments in Operation		Employment (Number)		Wages & Salaries Paid (\$1,000)	Value of fixed assets, Sept. (in Eth. 1,000)	Capital Exp. (Eth. \$1,000)	Value of production (in Eth. \$1,000)		Purchase of Materials (Eth. \$1,000)	Purchase of fuel (Eth. \$1,000)
	1961	1962	Eth.	For.				Gross	Net.		
A. Food products	22	21	8,540	182	5,163	56,946	6,755	28,554	10,932	18,264	1,238
of which:											
1. Flour, macaroni, biscuits	8	9	626	30	575	5,653	205	8,594	1,536	6,752	305
2. Edible oils & products	11	9	520	24	327	2,465	32	5,244	703	4,329	212
3. Sugar, tomato canning.	2	2	7,116	128	4,245	48,828	6,469	14,420	6,558	7,168	696
4. Slaughtering & preparation of meat	-	1	278	-	16	1,350	49	504	264	15	25
B. Beverages	20	17	986	44	960	5,132	889	5,966	4,300	1,368	246
1. Alcohol, beer, liquors	6	5	378	23	457	3,383	436	3,800	3,100	511	137
2. Wines	7	4	127	9	78	176	88	693	375	293	26
3. Soft drinks & carbonated water	7	8	480	12	425	1,573	365	1,473	825	564	83
C. Tobacco Manufactures	1	1	261	3	239	1,376	66	3,448	2,673	758	18
D. Textiles	9	11	9,966	93	7,116	32,593	10,933	42,426	19,200	21,705	1,521
1. Spinning weaving & finishing	4	5	8,630	75	6,343	27,237	9,348	36,884	16,763	18,837	1,284
2. Knitting mills, etc.	3	4	714	11	159	3,793	1,520	1,318	414	865	39
3. Cordage, sacks, rope, twines	2	2	616	7	615	1,563	65	4,224	2,022	2,003	198
E. Leather tanning & footwear	5	9	949	43	904	2,155	120	4,663	1,903	2,660	100
F. Saw Mills, plywood, etc.	7	6	1,032	40	456	1,178	50	1,479	904	490	85
G. Furniture & fixture	3	4	1,041	25	528	477	55	1,888	794	76	4
H. Printing & publishing	6	7	391	23	439	715	158	1,990	743	1,175	69
I. Chemicals & chemical products	-	3	191	13	40	1,001	40	788	519	243	25
J. Non-metallic mineral products	3	3	1,061	18	670	2,852	1,049	4,196	3,257	225	714
1. Bricks	2	2	640	9	100	99	10	283	218	-	65
2. Cement	1	1	421	9	570	2,753	1,039	3,913	3,039	225	649
K. Miscellaneous Manufactures	4	4	264	7	196	1,518	1,350	800	550	126	8
Total, Manufacturing 1962:	80	86	24,676	491	16,711	105,943	21,465	96,198	45,775	47,090	4,028
Total, Manufacturing 1961:	80	80	21,277	470	14,107	89,376	23,835	82,608	35,891	41,741	3,343
Total, Manufacturing 1960:	74	74	19,690	796	11,533	69,655	18,991	78,026	38,026	35,800	3,312
Total, Manufacturing 1959:	73	73	17,998	429	9,964	58,839	8,515	64,243	31,699	29,529	2,754
Total, Manufacturing 1958:	65	65	15,144	412	9,568	51,642	4,994	59,672	30,925	26,157	2,590
Total, Manufacturing 1957:	64	64	14,962	430	9,480	44,438	4,000	62,394	31,189	28,431	2,774

Year	Jan	Feb	Mar	Apr	May	June	July	Aug	Sept	Oct	Nov	Dec	Total
1880	100	100	100	100	100	100	100	100	100	100	100	100	1200
1881	100	100	100	100	100	100	100	100	100	100	100	100	1200
1882	100	100	100	100	100	100	100	100	100	100	100	100	1200
1883	100	100	100	100	100	100	100	100	100	100	100	100	1200
1884	100	100	100	100	100	100	100	100	100	100	100	100	1200
1885	100	100	100	100	100	100	100	100	100	100	100	100	1200
1886	100	100	100	100	100	100	100	100	100	100	100	100	1200
1887	100	100	100	100	100	100	100	100	100	100	100	100	1200
1888	100	100	100	100	100	100	100	100	100	100	100	100	1200
1889	100	100	100	100	100	100	100	100	100	100	100	100	1200
1890	100	100	100	100	100	100	100	100	100	100	100	100	1200
1891	100	100	100	100	100	100	100	100	100	100	100	100	1200
1892	100	100	100	100	100	100	100	100	100	100	100	100	1200
1893	100	100	100	100	100	100	100	100	100	100	100	100	1200
1894	100	100	100	100	100	100	100	100	100	100	100	100	1200
1895	100	100	100	100	100	100	100	100	100	100	100	100	1200
1896	100	100	100	100	100	100	100	100	100	100	100	100	1200
1897	100	100	100	100	100	100	100	100	100	100	100	100	1200
1898	100	100	100	100	100	100	100	100	100	100	100	100	1200
1899	100	100	100	100	100	100	100	100	100	100	100	100	1200
1900	100	100	100	100	100	100	100	100	100	100	100	100	1200

The following table shows the results of the experiments conducted during the year 1880. The first column shows the date of the experiment, the second column shows the number of trials, the third column shows the number of successes, and the fourth column shows the percentage of successes. The total number of trials is 1200, and the total number of successes is 1200, which is 100% of the total trials.

- Notes:
- (1) Excluding small shoemakers & shoe repairers.
 - (2) Excluding small carpentry shops.
 - (3) Excluding Berhanean Selam Printing Press in Addis Ababa.
 - (4) Including 4,600 non-factory sugar cane and tomato plantation workers and some 400 forest woodcutters, but excluding some 5,000 women handpickers employed in the coffee cleaning industry.
 - (5) "Fixed capital assets" include plant & machinery, vehicles, and land & buildings.
 - (6) Excluding an estimated 2 1/2 million worth of sugar cane grown on the plantations of the industrial enterprise.
 - (7) Estimated.

(for the year ended Sep. 10, 1962)

Industrial group	No. of establishments in Operation		Employment (Number)		Wages & Salaries Paid (\$1,000)	Value of fixed assets, Sept. (in Eth\$1,000)	Capital Exp. (Eth\$1,000)	Value of products (in Eth\$1,000)		Purchase of materials (Eth\$1,000)	Purchase of fuel (Eth\$1,000)
	1961	1962	Eth.	For.*				Gross	Net.		
A. Food products	23	23	1,752	108	1,621	14,470	527	10,351	4,819	5,033	502
1. Slaughtering & preparations of meat	6	5	593	19	276	2,126	100	4,049	1,541	2,401	107
2. Dairy products	2	3	175	9	111	645	58	857	777	55	25
3. Egg products	2	2	168	3	51	418	7	285	271	-	17
4. Flour, macaroni, biscuits	6	4	178	24	153	1,151	-	1,837	874	880	83
5. Salt (sea)	2	2	513	33	932	9,644	324	2,181	459	1,522	200
6. Edible oils & by-products	5	6	125	20	98	486	38	1,142	897	175	70
B. Beverages	13	15	414	70	470	2,684	27	5,229	1,885	3,159	185
1. Alcohol, beer, liquors .	3	3	200	35	297	1,282	-	3,706	1,072	2,505	129
2. Wines	7	7	77	19	71	940	8	1,088	605	463	20
3. Soft drinks & carbonated water	3	5	137	16	102	462	19	435	208	191	36
C. Tobacco Manufactures	1	1	151	18	167	135	-	690	529	157	5
D. Manufactures of Textiles ..	4	6	1,858	49	890	11,135	2,359	11,635	4,812	6,329	494
E. Printing & publishing * ...	7	7	-	-	-	-	-	-	-	-	-
F. Chemicals & chemical products	3	5	475	11	130	862	22	455	215	177	63
1. Oxygen & carbon dioxide .	2	4	27	5	27	194	17	181	69	88	24
2. Matches	1	1	448	6	103	668	5	274	146	89	39
G. Non-metallic mineral products	6	4	578	38	497	2,530	264	2,391	1,365	544	481
1. Bricks	4	1	254	4	240	1,209	-	251	171	40	39
2. Glass, mosaics	2	1	260	30	239	1,225	102	2,061	1,123	499	439
3. Cement products	-	2	64	4	18	96	162	79	71	5	3
H. Miscellaneous mfrs.	17	18	1,840	55	817	2,105	239	1,928	1,538	332	164
1. Paper	2	2	62	-	22	96	-	84	52	17	15
2. Buttons	3	3	654	5	94	900	-	424	383	31	10
3. Fishmeal	-	-	-	-	-	140	150	440	370	53	18
4. Other	12	13	1,124	50	701	989	89	980	633	231	121
Total, Manufacturing 1962 .	74	78	7,068	349	4,592	33,921	3,438	32,679	15,063	15,731	1,894
Total, Manufacturing 1961..		74	6,274	293	3,763	30,179	8,508	31,804	13,131	16,581	1,720
Total, Manufacturing 1960..		73	5,601	294	3,376	23,766	3,216	29,468	11,248	16,571	1,647
Total, Manufacturing 1959..		73	4,305	361	2,961	19,586	1,253	24,270	9,132	13,804	1,142
Total, Manufacturing 1958..		68	4,144	298	2,645	19,912	1,135	23,671	9,086	13,488	1,124
Total, Manufacturing 1957..		68	3,985	291	2,445	16,739	971	23,469	10,575	11,648	1,248

* Data for the printing presses in Asmara not available.

Source: Central Statistical Office.

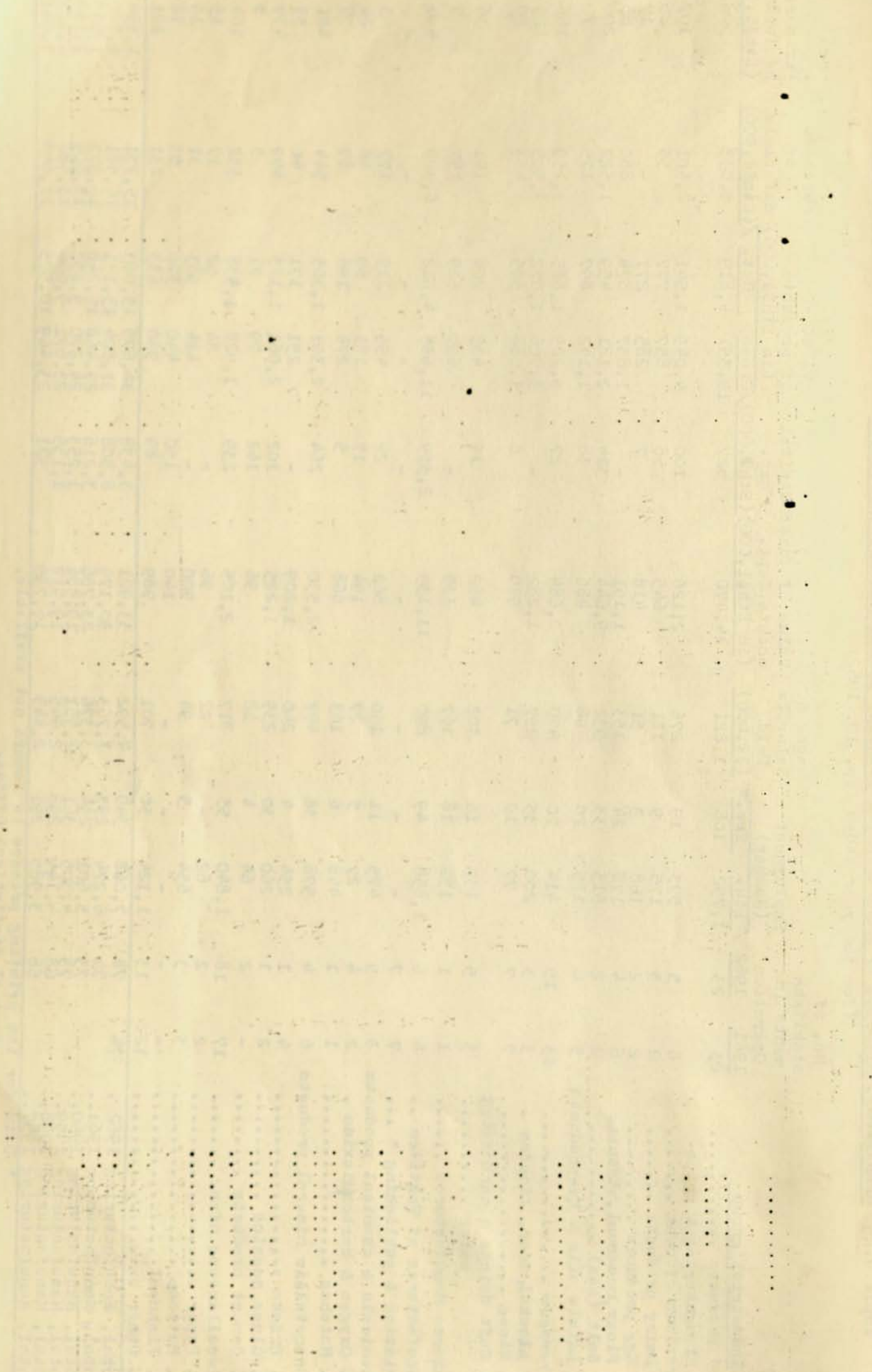


Table 10. EMPLOYMENT IN, AND WAGES & SALARIES PAID BY, MANUFACTURING INDUSTRIES¹ IN THE 13 PROVINCES, 1962
(for the year ended Sept. 10, 1962)

Industrial Group	Employment							Wages & salaries paid (in Eth.\$1.000)			
	Employees Total		Adm. Tech. & Clerical Employees		Operatives		Other Ethiopian Employees	Total	Wages Paid	Salaries Paid	
	Eth.	For.	Eth.	For.	Male	Female					Foreign.
A. Foods, sub-total	8,540	182	915	173	7,199	235	9	191	5,163	2,434	2,729
1. Slaughtering & meat preparations.	278	-	5	2	250	-	-	23	16	8	8
2. Flour, macaroni, biscuits	626	30	29	29	406	137	1	54	575	431	144
3. Sugar, tomato canning	7,116/3	128	834	123	6,174/3	70	5	38	4,345	1,799	2,446
4. Edible oils & by-products	520	24	47	21	369	28	3	76	327	196	131
B. Beverages, sub-total	985	44	86	29	756	117	15	26	961	590	371
1. Alcohol, beer, liquors	378	23	21	17	892	61	6	4	457	194	263
2. Wines	127	9	7	4	90	26	5	4	78	8	-
3. Soft drinks & carbonated water ..	481	12	58	8	374	30	4	18	425	248	177
C. Tobacco Manufactures	261	3	38	3	59	146	-	18	239	139	100
D. Textiles, sub-total	9,960	94	311	78	5,544	3,872	15	233	7,117	5,580	1,537
1. Spinning, weaving & finishing ...	8,630	75	222	60	4,709	3,480	15	219	6,344	4,976	1,367
2. Knitting, etc.	714	12	83	11	275	352	-	4	159	104	55
3. Sacks, cordage, rope & twine	616	7	6	7	560	40	-	10	614	500	114
E. Footwear & leather tanning	949	43	43	38	778	67	5	61	904	445	459
F. Saw mills planing mills, plywood ...	1,032	39	42	27	954	15	13	21	456	236	220
G. Furniture & fixture	1,041	25	157	17	855	-	8	29	528	329	199
H. Printing & publishing/2	391	23	184	20	185	-	3	22	439	406	33
I. Chemicals & chnl. products	191	13	10	10	178	-	3	3	40	24	16
J. Non-metallic mineral products	1,064	18	228	15	698	2	3	136	670	454	217
1. Bricks	640	9	200	77	340	-	2	100	100	74	26
2. Cement	421	9	28	3	355	2	1	36	570	380	191
K. Miscellaneous Manufactures	264	7	30	7	180	30	-	24	196	112	84
Total Manufacturing 1962	24,678	491	2,044	417	17,386/3	4,484	74	764	16,714	10,749	5,965
Total Manufacturing 1961	21,277	470	1,530	402	15,684	3,536	68	527	14,107	8,196	5,911
Total Manufacturing 1960	19,686	445	1,113	354	14,726	3,337	91	510	11,533	7,593	3,941
Total Manufacturing 1959	17,998	429	815	341	14,227	2,421	88	535	9,964	6,627	3,337
Total Manufacturing 1958	15,144	412	628	336	11,840	2,186	76	480	9,568	6,482	3,086
Total Manufacturing 1957	14,962	430	506	331	11,924	2,132	99	400	9,480	6,374	3,106

Notes: (1) Excluding the coffee and grain cleaning industry.
 (2) Excluding the Berhanona Selam Printing Press in Addis Ababa
 (3) Including contract employees (average number of casual workers.)
 Source: Central Statistical Office.

Table 11. EMPLOYMENT, WAGES & SALARIES PAID IN MANUFACTURING INDUSTRIES/1 IN ERITREA PROVINCE, 1962.

Page 20.

(for the year ended September 10, 1962)

Industrial Group	Employment								Wages & salaries paid (in Eth.\$1,000)		
	Employees Total		Adm., tch., & clerical Employees		Operatives			Other Ethio- pian Employees	Total	wages paid	Salaries paid
	Eth.	For.	Eth.	For.	Male	Female	Fore- ign				
A. Food products	1,752	108	35	75	982	709	33	26	1,621	1,074	547
1. Slaughtering & preparations of meat	593	19	8	15	243	279	4	13	276	186	90
2. Dairy products	175	9	2	8	89	81	1	3	111	66	45
3. Egg products	168	3	-	3	29	132	-	-	51	44	7
4. Flour, macaroni & biscuits..	178	24	11	21	110	56	3	1	153	100	53
5. Salt	513	33	14	16	362	137	17	-	932	626	306
6. Edible oils & by-products..	125	20	-	12	99	17	8	9	98	52	46
B. Beverages:	414	70	10	38	389	5	32	10	470	307	163
1. Alcohol Distil. & Breweries.	200	35	14	11	194	-	24	2	297	183	114
2. Wines	77	19	1	17	63	5	2	8	71	47	24
3. Soft drinks & carbonated water	137	16	5	10	132	-	6	-	102	77	25
C. Tobacco Manufactures	151	18	45	6	38	63	12	5	167	91	76
D. Manufacture of Textiles	1,858	49	72	41	788	989	8	9	890	695	195
1. Spinning, weaving & finishing	1,621	37	61	30	702	849	7	9	796	647	149
2. Sacks, cordages, rope & twine	237	12	11	11	86	140	1	-	94	48	46
E. Footwear & leather tanning.....	3	-	-	-	2	-	-	1	3	3	-
F. Chemicals & Chemical products..	475	11	3	9	275	192	2	5	130	94	36
1. Oxygen & carbon dioxide.....	27	5	-	5	25	2	-	-	27	18	9
2. Matches	448	6	3	4	250	190	2	5	103	76	27
G. Non-Metallic Mineral products .	578	38	3	15	344	223	23	8	497	382	115
H. Miscellaneous	1,840	55	37	31	1,161	574	24	68	817	610	207
1. Paper	62	-	1	-	56	5	-	-	22	22	-
2. Buttons	654	5	20	4	430	200	1	4	94	53	41
3. Others	1,124	50	16	27	675	369	23	64	701	535	166
Total Manufacturing 1962	7,071	349	205	215	3,979	2,955	137	132	4,225	3,250	1,359
Total Manufacturing 1961	6,274	253	178	208	3,576	2,343	85	177	3,763	2,533	1,230
Total Manufacturing 1960	5,601	294	271	201	3,128	2,118	93	84	3,326	2,472	904
Total Manufacturing 1959	4,305	361	70	193	2,549	1,580	168	106	2,961	2,157	791
Total Manufacturing 1958	4,144	298	54	196	2,467	1,482	97	146	2,955	2,176	865
Total Manufacturing 1957	3,985	262	38	205	2,427	1,392	84	45	2,848	2,176	785

Notes: /1 Excluding the printing presses in Asmara, data for which are not available

Source: Central Statistical Office.