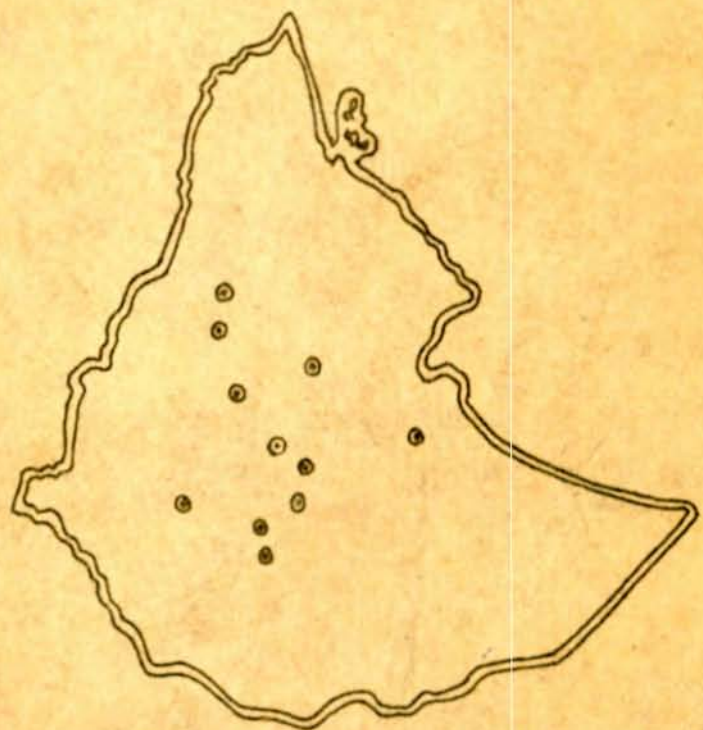


Car 4



REPORT ON SURVEY OF SMALL SCALE INDUSTRIES IN ELEVEN TOWNS (1976-77)



March 1979

THE PROVISIONAL MILITARY GOVERNMENT
OF SOCIALIST ETHIOPIA
HANDICRAFTS AND SMALL SCALE INDUSTRIES
DEVELOPMENT AGENCY

316.3
ETH/IA

Contents

	<u>Page</u>
Foreword	I
Objectives, Coverage, Notes	II
Definitions	III
Section One - Summary of Results	IV
Section Two - Brief Analysis of each surveyed town	IX

Tables

Section One

1.1	Distribution of SSIs by types and towns	1
1.2	Distribution of employment by types and towns.....	2
1.3	Break-down by Working Capital	3
1.4	Break-down by permanent employment.....	4
1.5	Ownership structure by type of industry	5
1.6	Ownership structure by towns	6
1.7	SSIs keeping book accounts and records	7
1.8	Raw material sources for manufacturing SSIs	8
1.9	Number of establishments and employment	9
1.10	Gross value of production, salaries and wages	10
1.11	Marketing outlets by type of industry	11
1.12	Obstacles to full capacity utilization	12
1.13	Likelyhood of expansion of SSIs	13
1.14	Growth pattern of SSIs 1959-1969 E.C.	14
1.15	Predicted growth of SSIs 1970-1983 E.C.	15
1.16	Input and Value Added by type of industry	16
1.17	Establishments having bank relations...	17

<u>Tables</u>	<u>Section Two</u>	<u>Page</u>
2.1	Addis Ababa : Establishments and employment....	18
2.2	Addis Ababa : Production, salaries and wages ..	19
2.3	Assela : Establishments and employment	20
	" : Production, salaries and wages)	
2.4	Awassa : " " " "	21
2.5	Bahr-Dar : " " " "	22
2.6	Debre-Markos: " " " "	23
2.7	Dessie : " " " "	24
2.8	Dire-Dawa : " " " "	25
2.9	Gonder : " " " "	26
2.10	Jimma : " " " "	27
2.11	Nazreth : " " " "	28
2.12	Shashemone : " " " "	29
2.13	Addis Ababa : Obstacles to full capacity utilization	30
2.14	Assela : " " " "	31
2.15	Awassa : " " " "	31
2.16	Bahr-Dar : " " " "	32
2.17	Debre-Markos: " " " "	32
2.18	Dessie : " " " "	33
2.19	Dire-Dawa : " " " "	33
2.20	Gonder : " " " "	34
2.21	Jimma : " " " "	34
2.22	Nazreth : " " " "	35
2.23	Shashemone : " " " "	35

In the gathering of the data and in their processing, IATA takes this opportunity to thank the OSS and its personnel for their valuable support throughout the survey.

Since this is the first time for IATA to conduct a statistical survey, we are aware that there might be some mistakes and would most welcome constructive criticisms for the improvement of future surveys of this kind.

Foreword

The Handicrafts and Small-scale Industries Development Agency (HASIDA) was established by the Ethiopian Government in August 1977 with the purpose of promoting and coordinating the development of the handicrafts and small-scale industries sectors of the country.

In accordance with national policies and plans, the Agency shall formulate policies for these sectors and provide assistance for their efficient development within the national economy.

However, since handicrafts and small-scale industries were totally neglected by the past regime, there was very little information available in the importance of their activities in various parts of the country, on their problems and potentials. Right from the start of HASIDA, it was therefore decided to undertake a series of statistical surveys in order to gather factual data on these sectors.

The current report presents the results of the first small-scale industry survey which was conducted in 1970 E.C. (1977/78 G.C.). The survey was organized by HASIDA and financed by a Capital Budget Appropriation. The Central Statistical Office has provided assistance both in the gathering of the data and in their processing. HASIDA takes this opportunity to thank the CSO and its personnel for their valuable support throughout the survey.

Since this is the first time for HASIDA to conduct a statistical survey, we are aware that there must be some mistakes and would much welcome constructive criticisms for the improvement of further surveys of this kind.

Objectives of the Survey

The survey was conducted to provide detailed statistical information on distribution, input and output, employment, ownership pattern, potentials, problem etc. of existing small-scale industries. The questionnaire was designed in such a way to obtain all the information required from each establishment covered.

Coverage

A complete census of small-scale industries was carried out in eleven major towns, namely Addis-Ababa, Assela, Awassa, Bahr-Dar, Debre-Markos, Dessie, Dire-Dawa, Gonder, Jimma, Nazareth and Shashamene. The selection of these towns was primarily based on population size and level of industrialization. Initially, the survey included Asmara but due to the prevailing circumstances in Eritrea at that time, it had to be postponed for our second phase survey.

Notes

The reference year for all the data is 1969 E.C. (1976/77 G.C)

There are two sections in this report. Section One has a summary of the findings along with tables on the aggregate data for the eleven towns. Section Two contains brief summaries accompanied by tables on number of establishments, employment, output, salaries and wages and problems facing the sector in each town.

Despite our efforts to maximize the level of accuracy, the data in this report are subject to errors due to omission and measurement. Nearly 20% of the establishments were not covered mainly due to the absence of the owners in the reference year who are the only source of data in most cases. As over 80% of the establishments do not keep books or records, the responses were dependant on the memory or

estimate of the respondents. They could say anything without possible control. Hence, we feel one has to be aware of this measurement problem while using the data, especially on inputs and outputs.

All computations are done correctly to the nearest integer!

Definitions

1. Small Scale Industry:- Any industrial activity which uses motive power and machines and which has fixed assets of a value which does not exceed 200,000 Birr excluding buildings.
2. Establishment:- It includes all the premises in the same place where a particular industrial activity is carried on under the same ownership or address.
3. Manufacturing Establishment:- All establishments excluding grain mills, wood-work service, metal-work service, leather-work service and coffee and grain cleaning.
4. Workers:- Refers to all persons engaged in the activities of an industry including working proprietors.
5. Employees:- Refers to all persons engaged in the enterprise on permanent or regular basis excluding working proprietors.
6. Salaries and Wages:- The money paid to permanent employees excluding payments made to temporary workers.
7. Input:- All industrial expenditure (raw material, depreciation or rent, repair and maintainance etc.) except labour cost.
8. Output:- The sum of values of goods and services produced in the reference year - valuation at market prices.
9. Value added:- Output minus input.

Classification

The 25 types of industries covered are not classified according to the Ethiopian Standard Classification System.

Value

All values are in Ethiopian Birr.

Section One

Summary of Results

Distribution:-

963 establishments belonging to 25 industry types have been covered by the survey. Of the 25 industry types, grain milling, bakery, wood-work and metal-work are the most common and are found in almost all of the eleven towns. These four industry groups together constitute over 80% of the total population of establishments covered by the survey, of which 55% are grain mills, 10% wood-work, 9% metal-work and 7% bakeries. Oil milling and clay and cement product establishments are also widely spread and are found in a good number of the surveyed towns. The relatively more modern industries like printing, knit-wear, plastic products, perfume etc. are found almost exclusively in Addis Ababa.

Regarding the spread of establishments in the surveyed towns as a whole, 61% of them are located in Addis Ababa and the remaining 39% are largely scattered in Nazareth, Dire-Dawa, Jimma, Dessie and Gonder, in that order (See table 1.1).

Ownership Pattern:-

Of the 963 establishments, 86% are individually owned, 10% by partners and 3% by cooperatives. This pattern of ownership is maintained even when we examine each industry type or town except for Assela where only 12% are owned by individuals and 85% by Urban Dwellers' Associations.

Employment:-

Grain milling employs only an average of three workers per establishment which is the least among the 25 industry types. Owing to this fact, it accounts for only 19% of total employment in this sector, although grain milling makes up 55% of the total number of establishments.

Coffee and grain cleaning has the highest average employment, engaging 89 workers per establishment. However, about 50% of these workers are temporary. The same is true with clay and cement products. Bakery, stone crushing and the relatively few modern industries also have higher average employment per establishment. (See table 1.9).

In general, 84% of all establishments employ less than 10 workers per establishment, 12% employ between 10 and 39 and only 3% employ 40 or more workers. (See table 1.4)

As a whole, 9,695 persons were engaged in this sector in the towns surveyed. The employment in the eleven towns follows more or less the same trend as the spread of establishments.

Raw Material Sources:-

Of the 380 manufacturing establishments, nearly 65% use domestic raw materials only, 34% use both domestic and imported raw materials, and only 1% depend only on imported raw materials. Nearly 61% of the bakeries, 60% of the wood-works, 56% of the metal-works, 100% of clay and cement products and 96% of oil milling establishments belong to the first category while the remaining belong to the second. (See table 1.8).

Output:-

The total output of the sector in the surveyed towns is 80,998,940 Birr. The major contribution to the output comes from bakeries oil mills, coffee and grain cleaning and wood-work, in that order, with a combined output of 50,684,071 Birr. These four industry groups, which make up only 26% of the total number of establishments, contributed nearly 63% of the total output. On the other extreme, grain mills, representing 55% of the establishments, contributed 4,993,008 Birr or only about 6% of the total output (See table 1.10).

Value Added:-

Coffee and grain cleaning by far outstrips all the other industry types with a value added of 12,903,129 Birr. It is followed by bakeries, oil mills, beverage and wood-work with a value of 6,790,385; 4,283,656; 2,656,611; 2,627,144; respectively. Grain mills account for 2,460,837 Birr only. When it comes to value added per worker, the relatively more modern industries like beverage, plastic products, perfumery and paints show the highest figures. (See table 1.16).

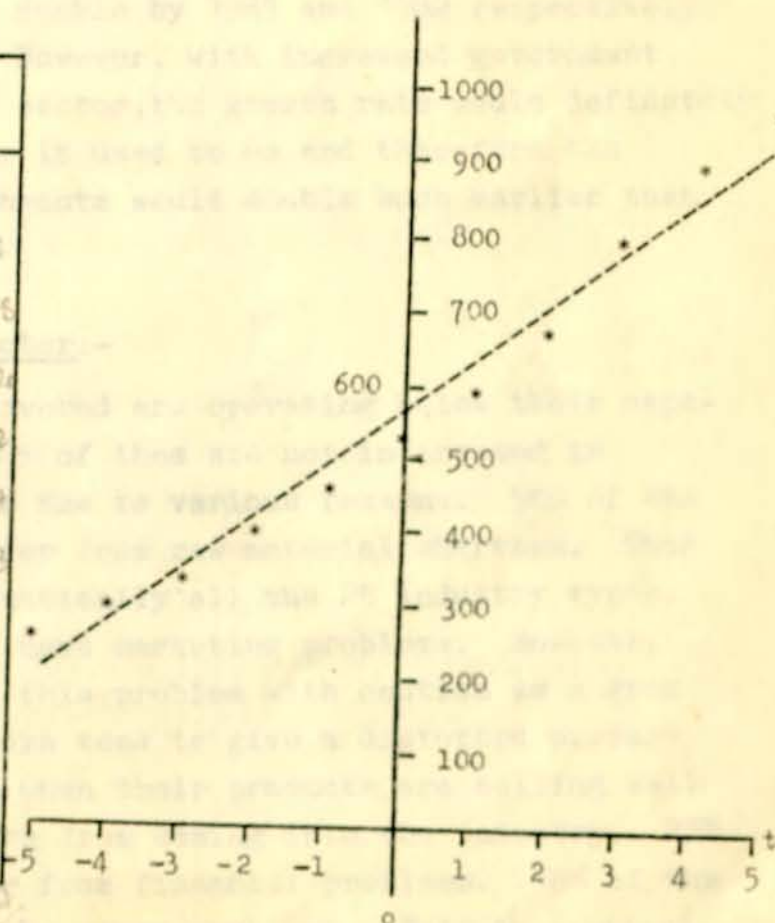
.../

Growth Pattern:-

After classifying the population of establishments into age groups and determining the net number for each year from 1959 to 1969 (E.C.), we find that the population of establishments grew by 72 units annually on an average. (See table 1.14). As it is probable that some establishments were started and then died between 1959 and 1969 (not within the reach of the survey), the average birth rate of establishments is larger than or equal to 72 per year.

The growth pattern of the population of establishments more or less follows a linear trend as can be observed in the scatter diagram. Based on the ten years data the equation of the trend line is $\hat{y} = 557 + 73t$ with standard error of 31, where \hat{y} is the predicted population size and t is time in years.

Year	t	Y=pop. size
1969	5	963
1968	4	895
1967	3	787
1966	2	667
1965	1	535
1964	0	518
1963	-1	445
1962	-2	389
1961	-3	335
1960	-4	292
1959	-5	246



(Note that 1964 is used as the base year to simplify computation.)

The trend equations of the more common industry types with the accompanying standard errors are determined and given in the table below.

Industry type	Trend equations	Standard errors
215	$y = 326 + 39t$	15
220	$y = 40 + 6t$	3
312	$y = 50 + 7t$	4
371	$y = 30 + 5t$	4
216	$y = 30 + 6t$	8

At the rate the number of establishments were growing in the past, the total number of establishments in the surveyed towns would double by 1983. In fact, wood work and bakeries would double by 1981 and 1982 respectively. (See table 1.15). However, with increased government assistance to this sector, the growth rate would definitely be larger than what it used to be and therefore the number of establishments would double much earlier than 1983.

Problems of the Sector:-

99% of the firms covered are operating below their capacities and about 50% of them are not interested in expanding the units due to various reasons. 58% of the establishments suffer from raw material shortage. This problem affects practically all the 25 industry types. About 38% claim to have marketing problems. However, one has to look at this problem with caution as a good number of proprietors tend to give a distorted picture of the market even when their products are selling well to discourage others from coming into the industry. 23% of the firms suffer from financial problems. 18% of the firms are affected by power problems. This is particularly

a serious problem in Awassa, Assela, Shashamene, Debre-Markos, Jimma and Dessie where 94%, 88%, 88%, 71%, 69% and 56% of the establishments, respectively, operate far below their capacities largely due to power shortage. (See tables 2.13 to 2.23).

Most of the firms in this sector (over 80%) do not keep book accounts or records. Although the proprietors themselves do not see this as a problem, it is certainly an obstacle to the development of the sector. A case in point is that while 23% of the establishments suffer from financial problems, they are not in a position to approach the banks since the banks extend loans only to firms which keep records. For that matter, 97% of the establishments did not have any relations with banks in the reference year. This clearly shows how far the banks are from this relatively modern sector.

Section Two

Brief analysis of each surveyed town

Addis Ababa

All 25 industry types with a total number of 590 establishments were represented during the reference year. Nearly 80% of the establishments were covered. 56% of the establishments were grain mills, 8% wood-work, 7% oil pressing and 6% were metal-work.

90% of the establishments were owned by individuals, 8% by partners and only 1% by cooperatives. 53 were in grain mills, 5 in bakery, 7 in wood work and 103 in clay and cement products. (See table 2.4).

6,604 workers were engaged in the activities of the sector, of which 13% were in grain mills, 15% in bakeries, 14% in grain and coffee cleaning and 15% in wood-work. Average employment is highest in grain and coffee cleaning with 223 workers per establishment, and the least in grain milling. (See table 2.1).

Raw materials shortage is the problem which affected the industries most. (See table 2.13).

Assela

26 establishments were covered under 4 industry types of which 77% were grain milling, 4% bakery, and 19% wood work.

85% of the establishments were owned by urban dwellers' associations, a case particular to Assela only.

Total employment in the sector was 138 of which 42% were in grain milling, 11% in bakery and the remaining 47% in wood work. (See table 2.3).

Raw materials and power shortages were the major problem of production. (See table 2.14).

Awassa

18 establishments comprising 78% grain mills, 6% bakery, 11% wood work, and 6% clay and cement products, were covered in Awassa.

All of these establishments were owned by individuals.

183 workers were engaged in this sector of which 53 were in grain mills, 8 in bakery, 19 in wood work and 103 in clay and cement products. (See table 2.4).

73% of the establishments are owned by individuals, 22% by partners and the rest by cooperatives.

Dessie

43 establishments of which 51% were grain mills, 21% wood work and the remaining 28% belonging to 6 different trades were covered.

84% were under individual ownership, 14% under partners and the rest belong to the government.

Total employment in the sector was 500. Average employment per establishment is 12, which is the highest among the surveyed towns. (See table 2.7).

The problems that deserve attention most were power and raw material shortage. (See table 2.18).

Dire-Dawa

49 establishments of 8 industry types were covered of which 31% were grain mills, 29% bakeries, 14% wood work and 18% metal work.

92% of the establishments were owned by individuals, 6% by partners and 2% by cooperatives.

Of the 399 workers engaged in the sector, 66% were in bakeries. (See table 2.8).

Raw material shortage was the problem affecting full capacity production most. (See table 2.19).

Gonder

Of the 45 establishments covered, 44% were grain mills, 13% wood-works, 13% metal-works, 22% oil milling and 4% bakeries.

73% of the establishments were owned by individuals, 22% by partners and the rest by cooperatives.

Shashemene

Of the 26 establishments covered, 73% were grain mills, 4% bakeries, 12% wood-works and 12% metal-works.

81% of the establishments were owned by individuals and the remaining 19% by partners.

118 workers were taking part in the activities of the sector, of which 57% were in grain mills. Average employment per establishment is 5 which is exactly half of the corresponding figure for the aggregate of the surveyed towns. (See table 2.12).

Power, raw materials shortage and finance were the leading problems affecting full capacity operation. (See table 2.23).

Nazroth

Among the surveyed towns, Nazroth is second to Addis Ababa with 35 establishments in 9 different trades.

Individuals owned 94% of these establishments and the rest were owned by partners.

Total employment was 506. Of these, 67% were engaged in coffee and grain cleaning. (See table 2.11).

98% of the establishments were operating below their capacities owing to, primarily, raw material shortage and marketing problems. (See table 2.23).

Total employment was 399, of which 45% were in grain mills. Average employment per bakery is the highest among all the surveyed towns. (See table 2.9).

Raw materials shortage, marketing and finance were the problems, in that order, which hindered the industries from operating at full capacity. (See table 2.20).

Jimma

49 establishments of 9 different trades were covered. (See table 2.10).

76% of the establishments were owned by individuals, 20% by partners and 4% by government.

Total employment was 431. Grain milling and bakery had the largest shares.

Power shortage, marketing, and raw materials shortage were the problems affecting full capacity operation most. (See table 2.21).

Nazreth

Among the surveyed towns, Nazreth is second to Addis Ababa with 53 establishments in 9 different trades.

Individuals owned 94% of these establishments and the rest were owned by partners.

Total employment was 596. Of these, 61% were engaged in coffee and grain cleaning. (See table 2.11).

98% of the establishments were operating below their capacities owing to, primarily, raw material shortage and marketing problems. (See table 2.22).

Table 1.1 Distribution of Small-scale Industries over the surveyed Towns 1969 E.C.

Code	Industry Type	A.A.	Assela	Awassa	Bahr-Dar	Debre-Marcos	Dessie	Dire-Dawa	Gonder	Jimma	Nazareth	Shashe-mene	Total
√ 215	Grain mills	328	20	14	13	25	22	15	20	24	30	19	530
220	Bakeries	35	1	1	2	3	2	14	2	8	3	1	72
221	Coffee & grain clearing	4	-	-	-	-	1	-	-	6	4	-	15
3	312 Wood works	48	2	2	3	2	9	6	6	3	4	3	88
31201	Wood works(Service)	10	3	-	-	-	-	1	-	-	1	-	15
371	Metal works	34	-	-	1	1	4	6	6	4	4	3	63
37101	Metal works(Service)	17	-	-	-	-	-	3	-	-	-	-	20
233	Beverage industry	3	-	-	-	-	-	-	-	1	-	-	4
351	Clay & Cement products	4	-	1	1	-	1	3	1	1	1	-	13
223	Confectionaries	6	-	-	-	-	2	1	-	1	-	-	10
359	Stone crushing	4	-	-	-	-	-	-	-	1	-	-	5
253	Knit wear	4	-	-	-	-	1	-	-	-	-	-	5
330	Printing and publishing	8	-	-	-	-	-	-	-	-	-	-	8
216	Oil mills	43	-	-	10	3	1	-	10	-	5	-	72
349	Plastic products	1	-	-	-	-	-	-	-	-	1	-	2
261	Leather	23	-	-	-	-	-	-	-	-	-	-	23
26101	Leather work(Service)	3	-	-	-	-	-	-	-	-	-	-	3
229	Coffee roasting	3	-	-	-	-	-	-	-	-	-	-	3
342	Perfume manufacture	1	-	-	-	-	-	-	-	-	-	-	1
373	Electric Injera oven	2	-	-	-	-	-	-	-	-	-	-	2
350	Glass products	3	-	-	-	-	-	-	-	-	-	-	3
258	Shirt factory	3	-	-	-	-	-	-	-	-	-	-	3
343	Paint manufacture	1	-	-	-	-	-	-	-	-	-	-	1
320	Paper products	1	-	-	-	-	-	-	-	-	-	-	1
399	Others (Unclassified)	1	-	-	-	-	-	-	-	-	-	-	1
T O T A L		590	26	18	30	34	43	49	45	49	53	26	963

Table 1.2 Distribution of Employment In Small-scale Industries - Includes all persons taking part in industrial activities 1969 E.C.

Code	Industry Type	A.A.	Assela	Awassa	Bahr-Dar	Debre-Marcos	Dessie	Dire-Dawa	Gonder	Jimma	Nazareth	Shashe-mene	Total
7 21	215 Grain mills	✓ 876	58	53	47	73	231	52	181	98	87	67	1,823
71	220 Bakeries	✓ 994	15	8	38	26	63	263	82	106	34	15	1,644
71	221 Coffee & grain cleaning	✓ 892	-	-	-	-	35	-	-	43	364	-	1,335
7	312 Wood works	980	54	19	48	8	36	35	41	61	36	29	1,347
7	31201 Wood works (Service)	54	11	-	-	-	-	4	-	-	2	-	71
12	371 Metal works	229	-	-	5	1	16	14	24	15	21	7	332
12	37101 Metal works (Service)	89	-	-	-	-	-	8	-	-	-	-	97
3	233 Beverage industry	73	-	-	-	-	-	-	-	19	-	-	92
11	351 Clay & Cement products	197	-	103	15	-	81	17	9	27	9	-	458
11	223 Confectionaries	✓ 173	-	-	-	-	24	6	-	26	-	-	229
11	359 Stone crushing	177	-	-	-	-	-	-	-	36	-	-	213
5	253 Knit wear	211	-	-	-	-	8	-	-	-	-	-	219
4	330 Printing and publishing	288	-	-	-	-	-	-	-	-	-	-	288
2	216 Oil mills	✓ 496	-	-	49	17	6	-	62	-	35	-	665
10	349 Plastic products	16	-	-	-	-	-	-	-	-	8	-	24
6	261 Leather	401	-	-	-	-	-	-	-	-	-	-	401
6	26101 Leather work (Service)	17	-	-	-	-	-	-	-	-	-	-	17
11	229 Coffee roasting	✓ 33	-	-	-	-	-	-	-	-	-	-	33
10	340 Perfume manufacture	52	-	-	-	-	-	-	-	-	-	-	53
12	373 Electric Injera oven	55	-	-	-	-	-	-	-	-	-	-	55
11	350 Glass products	41	-	-	-	-	-	-	-	-	-	-	41
5	250 Shirt factory	✓ 127	-	-	-	-	-	-	-	-	-	-	127
10	341 Paint manufacture	33	-	-	-	-	-	-	-	-	-	-	33
8	320 Paper products	87	-	-	-	-	-	-	-	-	-	-	87
13	390 Others (Unclassified)	11	-	-	-	-	-	-	-	-	-	-	11
	T O T A L	6,604	138	183	202	125	500	399	399	431	596	118	9,695

65%

37%

Table 1.3 Break down of the number of SSIs by Working Capital at the start of industrial operation.
(all surveyed towns).

Code	Industry Type	Unknown		0 - 1000		1001 - 8000		8001 - 20000		Over 20000	
		No.	%	No.	%	No.	%	No.	%	No.	%
215	Grain mills	54	10	23	4	342	65	103	19	8	2
220	Bakeries	5	7	6	8	19	26	12	17	30	42
221	Coffee & grain cleaning	2	13	-	-	3	20	1	7	9	60
312	Wood works	3	3	18	20	35	40	18	20	14	16
31201	Wood works (Service)	2	13	6	40	5	33	2	13	-	-
371	Metal works	1	2	34	54	18	29	7	11	3	5
37101	Metal works (Service)	1	5	4	20	13	65	1	5	1	5
233	Beverage industry	-	-	-	-	1	25	2	50	1	25
351	Clay & Cement products	2	15	-	-	5	38	3	23	3	23
223	Confectionaries	-	-	2	20	5	50	2	20	1	10
359	Stone crushing	-	-	-	-	1	20	1	20	3	60
253	Knit wear	-	-	2	40	1	20	-	-	2	40
330	Printing & Publishing	-	-	-	-	2	25	2	25	4	50
216	Oil mills	-	-	1	1	28	39	26	36	17	24
349	Plastic products	-	-	-	-	-	-	-	-	2	100
261	Leather products	1	4	9	39	6	26	4	17	3	13
26101	Leather work (Service)	-	-	-	-	3	100	-	-	-	-
229	Coffee roasting	-	-	-	-	-	-	2	67	1	33
342	Perfume manufacture	-	-	-	-	-	-	-	-	1	100
373	Electric Injera oven	-	-	-	-	1	50	-	-	1	50
350	Glass products	-	-	1	33	-	-	-	-	2	67
258	Shirt factory	-	-	-	-	-	-	-	-	3	100
343	Paint manufacture	-	-	-	-	-	-	-	-	1	100
320	Paper products	-	-	-	-	-	-	-	-	1	100
399	Others (Unclassified)	-	-	1	100	-	-	-	-	-	-
	T O T A L	71	7	107	11	488	51	186	19	111	12

Table 1.4 Breakdown of the number of SSIs by size of Permanent Employment and branch 1969 E.C.

Code	Industry Type	0 - 9		10 - 19		20 - 29		30 - 39		40 and above	
		No.	%	No.	%	No.	%	No.	%	No.	%
215	Grain mills	529	100	-	-	-	-	-	-	1	-
220	Bakeries	✓ 27	38	14	19	12	17	11	15	8	11
221	Coffee & grain cleaning	✓ 8	53	2	13	2	13	-	-	3	20
312	Wood works	56	64	16	18	9	10	2	2	5	6
31201	Wood works (Service)	13	87	2	13	-	-	-	-	-	-
371	Metal works	60	95	1	2	2	3	-	-	-	-
37101	Metal works (Service)	19	95	1	5	-	-	-	-	-	-
233	Beverage industry	1	25	1	25	-	-	2	50	-	-
351	Clay & Cement products	7	54	1	8	2	15	1	8	2	15
223	Confectionaries	✓ 4	40	2	20	3	30	-	-	1	10
359	Stone crushing	-	-	-	-	2	40	2	40	1	20
253	Knit wear	2	40	1	20	1	20	-	-	1	20
330	Printing and publishing	3	38	1	13	1	13	1	13	2	25
216	Oil mills	62	86	6	8	3	4	1	1	-	-
349	Plastic products	1	50	1	50	-	-	-	-	-	-
261	Leather	13	57	2	9	4	17	-	-	4	17
26101	Leather work (Service)	3	100	-	-	-	-	-	-	-	-
229	Coffee roasting	✓ 2	67	1	33	-	-	-	-	-	-
342	Perfume manufacture	-	-	-	-	-	-	-	-	1	100
373	Electric Injera oven	1	50	-	-	-	-	-	-	1	50
350	Glass products	1	33	1	33	1	33	-	-	-	-
258	Shirt factory	-	-	-	-	1	33	1	33	1	33
343	Paint manufacture	-	-	-	-	-	-	1	100	-	-
320	Paper products	-	-	-	-	-	-	-	-	1	100
399	Others (Unclassified)	1	100	-	-	-	-	-	-	-	-
T O T A L		813	84	53	6	43	4	22	2	32	3

Table 1.5 Ownership structure of Establishments by industry type for the year 1969 E.E.
(All Surveyed Towns)

Code	Industry Type	Individual		Partnership		Cooperative		Govt.		Other	
		No.	%	No.	%	No.	%	No.	%	No.	%
215	Grain mills	459	87	44	8	24	5	1	-	2	-
220	Bakeries	64	89	6	8	-	-	1	1	1	1
221	Coffee & grain cleaning	12	80	2	13	-	-	1	7	-	-
312	Wood works	76	86	9	10	2	2	1	1	-	-
31201	Wood works (Service)	13	87	-	-	2	13	-	-	-	-
371	Metal works	56	89	7	11	-	-	-	-	-	-
37101	Metal works (Service)	17	85	3	15	-	-	-	-	-	-
233	Beverage industry	3	75	1	25	-	-	-	-	-	-
351	Clay & Cement products	10	77	2	15	1	8	-	-	-	-
223	Confectionaries	8	80	2	20	-	-	-	-	-	-
359	Stone crushing	5	100	-	-	-	-	-	-	-	-
253	Knit wear	5	100	-	-	-	-	-	-	-	-
330	Printing & Publishing	5	63	1	13	-	-	1	13	1	13
216	Oil mills	63	88	9	12	-	-	-	-	-	-
349	Plastic products	2	100	-	-	-	-	-	-	-	-
261	Leather products	21	91	2	9	-	-	-	-	-	-
26101	Leather work (Service)	2	67	1	33	-	-	-	-	-	-
229	Coffee roasting	3	100	-	-	-	-	-	-	-	-
342	Perfume manufacture	1	100	-	-	-	-	-	-	-	-
373	Electric Ijera oven	-	-	1	50	-	-	1	50	-	-
350	Glass products	3	100	-	-	-	-	-	-	-	-
258	Shirt factory	1	33	2	67	-	-	-	-	-	-
343	Paint manufacture	-	-	-	-	-	-	-	-	1	100
320	Paper products	-	-	1	100	-	-	-	-	-	-
399	Others (Unclassified)	1	100	-	-	-	-	-	-	-	-
T O T A L		830	86	93	10	29	3	6	1	5	1

Table 1.6 Ownership structure of Establishments in the surveyed towns for 1969 E.C.

No.	Towns	Individual		Partnership		Cooperatives		Govt.		Other	
		No.	%	No.	%	No.	%	No.	%	No.	%
1	Addis Ababa	530	90	50	8	4	1	2	-	4	1
2	Assela	3	12	-	-	22	85	1	4	-	-
3	Awassa	18	100	-	-	-	-	-	-	-	-
4	Behr-Dar	26	87	3	10	-	-	-	-	1	3
5	Debre-Markos	31	91	3	9	-	-	-	-	-	-
6	Dessie	36	84	6	14	-	-	1	2	-	-
7	Dire-Dawa	45	92	3	6	1	2	-	-	-	-
8	Gonder	33	73	10	22	2	4	-	-	-	-
9	Jimma	37	76	10	20	-	-	2	4	-	-
10	Nazreth	50	94	3	6	-	-	-	-	-	-
11	Shashemene	21	81	5	19	-	-	-	-	-	-
	TOTAL	830	86	93	10	29	3	6	1	5	1

Table 1.7 Number and Percentage of Small-scale Industries which keep book accounts and records.

No.	Town	Keep book accounts & rec.		Don't keep book accounts & rec.	
		No.	%	No.	%
1	Addis Ababa	86	15	504	85
2	Assela	23	88	3	12
3	Awassa	1	6	17	94
4	Bahr-Dar	1	3	29	97
5	Debre-Markos	11	32	23	68
6	Dessie	3	7	40	93
7	Dirc-Dawa	8	16	41	84
8	Gonder	17	38	28	62
9	Jimma	5	10	44	90
10	Fazreth	6	11	47	89
11	Shasheme	-	-	26	100
	T O T A L	161	17	802	83

12	Food products	1	100	-	-
13	Paper products	1	100	-	-
14	Others (unclassified)	1	100	-	-
	T O T A L	3	100	0	0

Code	Industry Type	Domestic only		Imported only		Both dom. and imported	
		No.	%	No.	%	No.	%
		226	Bakeries	44	61	-	-
312	Wood works	53	60	-	-	35	40
371	Metal works	35	56	-	-	28	44
233	Beverage industry	3	75	-	-	1	25
351	Clay & Cement products	13	100	-	-	-	-
223	Confectionaries	5	50	-	-	5	50
259	Stone crushing	3	60	-	-	2	40
253	Knit wear	2	40	-	-	3	60
330	Printing and publishing	2	25	-	-	6	75
216	Oil mills	69	96	-	-	3	4
349	Plastic products	-	-	1	50	1	50
261	Leather	13	57	-	-	10	43
229	Coffee roasting	3	100	-	-	-	-
342	Ferfume manufacture	-	-	-	-	1	100
273	Electric Injera oven	2	100	-	-	-	-
350	Gless products	-	-	2	67	1	33
258	Shirt factory	-	-	-	-	3	100
343	Paint manufacture	-	-	1	100	-	-
320	Paper products	1	100	-	-	-	-
399	Others (Unclassified)	1	100	-	-	-	-
	T O T A L	247	65	4	1	127	34

Table 1.9 No. of Establishments, Total and Average Employment. (All surveyed Towns)

Code	Industry type	No. of Estab.		Persons engaged in ind. work			
		Actual	as % of total	Permanent employees	Total No. of workers	as % of all worker	Ave. No. per estab.
215	Grain mills	530	55	1,107	1,823	19	3
220	Bakeries	72	7	1,384	1,644	17	23
221	Coffee & grain cleaning	15	2	732	1,335	14	89
312	Wood works	88	9	1,129	1,347	14	15
31201	Wood works (Service)	15	2	63	71	1	5
371	Metal works	63	7	212	332	3	5
37101	Metal works (Service)	20	2	72	97	1	5
233	Beverage industry	4	0	87	92	1	23
351	Clay & Cement products	13	1	253	458	6	42
223	Confectionaries	10	1	167	229	2	23
359	Stone crushing	5	1	201	213	2	43
253	Knit wear	5	1	218	219	2	39
330	Printing and publishing	8	1	278	288	3	36
216	Oil mills	72	7	415	665	7	9
349	Plastic products	2	0	21	24	0	12
261	Leather	23	2	381	401	4	17
26101	Leather work (Service)	3	0	13	17	0	6
229	Coffee roasting	3	0	24	33	0	11
342	Perfume manufacture	1	0	52	33	1	53
373	Electric Injera oven	2	0	55	55	1	26
350	Glass products	3	0	41	41	0	14
258	Shirt factory	3	0	123	127	1	42
343	Paint manufacture	1	0	33	33	0	33
320	Paper products	1	0	87	87	1	87
399	Others (Unclassified)	1	0	4	11	0	11
T O T A L		963	100	7,152	9,695	100	10

Table 1.10 Gross value of Production and Salaries and Wages for the year 1969 E.C. (All Surveyed Towns)

Code	Industry Type	Gross Value of Prod. or Service			Salaries and Wages paid	
		T O T A L	Ave. per estab.	Ave. per worker	T O T A L	Ave. per employee
215	Grain mills	4,993,008	9,421	2,739	609,797	551
220	Bakeries	17,284,555	240,063	10,514	1,409,870	1,019
221	Coffer & grain cleaning	13,661,676	910,778	10,233	557,879	762
312	Wood works	5,913,763	67,202	4,390	1,408,850	1,248
31201	Wood works (Service)	167,959	11,197	2,366	58,561	930
371	Metal works	1,464,365	23,244	4,411	271,460	1,280
37101	Metal works (Service)	272,026	13,601	2,804	145,355	1,019
233	Beverage industry	4,702,659	1,175,665	51,116	73,519	845
351	Clay & Cement products	906,549	69,735	1,979	220,932	873
223	Confectioneries	1,444,200	144,420	6,307	142,090	851
359	Stone crushing	440,193	88,039	2,067	162,263	807
253	Knit wear	855,862	171,172	3,908	160,759	737
330	Printing and publishing	3,772,013	13,097	13,097	612,501	2,203
216	Oil mills	13,824,077	20,788	20,788	448,679	1,081
349	Plastic products	1,000,549	41,690	41,690	35,244	1,678
751	Leather	3,279,176	142,573	8,177	507,314	1,332
26101	Leather work (Service)	46,476	15,492	2,734	17,808	1,370
229	Coffee roasting	552,480	184,160	16,742	23,940	998
342	Perfume manufacture	1,877,070	1,877,070	35,416	195,947	3,768
373	Electric injera oven	369,150	184,575	6,712	157,689	2,867
350	Glass products	660,879	220,293	16,119	64,841	1,581
258	Shirt factory	1,441,228	480,409	11,348	224,783	1,828
343	Paint manufacture	1,262,294	1,262,294	38,251	109,474	3,317
320	Paper products	795,945	795,943	9,149	75,060	863
399	Others (Unclassified)	10,788	10,788	981	3,840	960
	T O T A L	80,998,940	84,111	8,355	7,738,455	1,082

80,398,938

600,002

Table 1.12 Proportion of each industry type hindered from operating at full capacity by the indicated problems. (All Surveyed Towns)

Code	Industry Type	Operating at full Capacity		Not operating at full capacity because of							
				Raw material Shortage		Power Shortage		Marketing Problems		Financial Problems	
		No.	%	No.	%	No.	%	No.	%	No.	%
215	Grain mills	7	1	248	47	130	25	254	48	101	19
220	Bakeries	1	1	61	85	6	8	6	8	6	8
221	Coffee & grain cleaning	-	-	2	13	6	40	4	27	2	13
312	Wood works	-	-	62	70	12	14	29	33	29	33
31201	Wood works (Service)	-	-	11	73	2	13	4	27	9	60
371	Metal works	-	-	44	70	4	6	32	51	22	35
37101	Metal works (Service)	-	-	10	50	-	-	9	45	5	25
233	Beverage industry	-	-	4	100	-	-	-	-	1	25
351	Clay & Cement products	-	-	4	31	1	8	10	77	5	38
223	Confectioneries	-	-	7	70	2	20	3	30	2	20
359	Stone crushing	-	-	4	80	1	20	1	20	2	40
253	Knit wear	-	-	5	100	-	-	2	40	2	40
330	Printing & Publishing	1	13	5	63	-	-	2	25	3	38
216	Oil mills	-	-	60	83	6	7	2	7	12	17
349	Plastic products	-	-	1	50	-	-	-	-	-	-
261	Leather products	1	4	15	65	1	4	5	22	10	43
26101	Leather work (Service)	-	-	3	100	-	-	2	67	1	33
229	Coffee roasting	-	-	1	33	-	-	-	-	-	-
342	Perfume manufacture	-	-	1	100	-	-	-	-	-	-
373	Electric Injera oven	-	-	2	100	-	-	1	50	2	100
350	Glass products	-	-	1	33	-	-	1	33	1	33
258	Shirt factory	-	-	2	67	1	33	-	-	1	33
343	Paint manufacture	-	-	1	100	-	-	-	-	1	100
320	Paper products	-	-	1	100	-	-	-	-	-	-
399	Others (Unclassified)	-	-	1	100	-	-	-	-	-	-
T O T A L		10	1	555	58	172	18	167	38	217	23

Code	Industry Type	Likely to Expand		Unlikely to expand because of									
		No.	%	Excess Capacity		Raw material Problems		Financial Problems		Labour Problems		Spare parts Problems	
				No.	%	No.	%	No.	%	No.	%	No.	%
215	Grain mills	240	45	49	9	86	16	144	27	15	3	152	29
220	Bakeries	38	53	9	13	23	32	8	11	4	6	4	6
221	Coffee & grain cleaning	10	67	1	7	1	7	1	7	2	13	-	-
312	Wood works	53	60	5	6	17	19	20	23	6	7	8	9
31201	Wood works (Service)	12	80	1	7	1	7	1	7	1	7	-	-
371	Metal works	39	62	4	6	14	22	16	25	1	2	6	10
37101	Metal works (Service)	14	70	-	-	-	-	2	10	-	-	-	-
233	Beverage industry	2	50	-	-	1	25	-	-	1	25	-	-
351	Clay & Cement products	10	77	-	-	-	-	2	15	-	-	1	8
223	Confectioneries	5	50	-	-	3	30	3	30	1	10	3	30
359	Stone crushing	3	60	1	20	-	-	2	40	-	-	1	20
253	Knit wear	4	80	-	-	1	20	-	-	-	-	-	-
330	Printing & Publishing	4	50	-	-	2	25	-	-	1	13	1	13
216	Oil mills	34	47	3	4	26	36	17	24	2	3	20	28
349	Plastic products	2	100	-	-	-	-	-	-	-	-	-	-
261	Leather products	14	61	-	-	4	17	8	35	1	4	3	13
26101	Leather work (Service)	1	33	1	33	1	33	1	33	-	-	-	-
229	Coffee roasting	2	67	-	-	-	-	1	33	-	-	1	33
342	Perfume manufacture	1	100	-	-	-	-	-	-	-	-	-	-
373	Electric Hejira oven	1	50	-	-	-	-	1	50	-	-	-	-
350	Glass products	1	33	1	33	-	-	-	-	1	33	-	-
258	Shirt factory	1	33	-	-	1	33	1	33	-	-	-	-
343	Paint factory	1	100	-	-	-	-	-	-	-	-	-	-
320	Paper products	1	100	-	-	-	-	-	-	-	-	-	-
399	Others (Unclassified)	-	-	-	-	-	-	-	-	-	-	-	-
T O T A L		493	51	75	8	181	19	228	24	36	4	200	21

Table 1.14 Growth Pattern of the number of Small-scale Industries from 1959 - 1969 E.C. (All Surveyed Towns)

Code	Industry Type	Year in E.C.											Average annual growth rate (net)
		1969	1968	1967	1966	1965	1964	1963	1962	1961	1960	1959	
I 215	Grain mills	✓530	504	✓453	389	351	310	270	237	208	183	153	✓38
II 220	Bakeries	✓72	68	✓55	48	44	39	32	24	21	17	15	✓6
III 221	Coffee & grain cleaning	✓15	14	✓12	11	9	8	8	8	7	7	6	✓1
IV 312	Wood works	88	82	75	68	51	43	37	32	28	21	20	✓7
V 31201	Wood work (Service)	15	15	13	11	10	10	8	5	4	2	2	✓1
VI 371	Metal works	63	53	45	37	32	26	20	18	12	11	11	5 (4)
VII 37101	Metal works (Service)	20	20	16	10	10	8	8	7	6	5	5	2 (1)
VIII 233	Beverage industry	4	4	4	3	3	3	3	3	3	3	3	0
IX 351	Clay & Cement products	13	13	12	11	11	9	8	8	5	5	4	✓1
X 223	Confectionaries	✓10	10	✓9	6	6	6	4	4	3	2	1	✓1
XI 359	Stone crushing	5	4	4	3	3	3	2	2	2	2	2	0
XII 253	Knit wear	5	4	4	4	4	4	4	4	3	2	1	0
XIII 330	Printing & Publishing	8	8	8	8	7	6	6	6	6	5	4	0
XIV 216	Oil mills	✓72	60	✓46	32	24	23	18	16	14	13	10	✓6
XV 261	Leather products	2	2	2	2	2	2	1	1	1	1	1	0
XVI 26101	Leather work (Service)	23	18	16	13	9	9	9	7	7	7	5	2
XVII 229	Coffee roasting	3	3	1	-	-	-	-	-	-	-	-	0
XVIII 342	Perfume manufacture	1	1	1	1	-	-	-	-	-	-	-	0
XIX 373	Electric Injers over.	2	1	1	1	1	1	1	1	1	1	1	0
XX 350	Glass products	3	3	3	3	2	2	2	2	2	2	1	0
XXI 258	Shirt factory	3	3	3	2	2	2	1	1	-	-	-	0
XXII 343	Paint manufacture	1	1	1	1	1	1	1	1	1	1	1	0
XXIII 320	Paper products	1	1	1	1	1	1	-	-	-	-	-	0
XXIV 399	Others (unclassified)	1	1	1	1	1	1	1	1	-	-	-	0
T O T A L		963	895	787	667	585	518	445	389	335	292	246	72

Table 1.15 Predicted population size of total and the five more common industries from 1970-1983 E.C. (All Surveyed Towns)

Year in E.E.	Grain mills	Bakeries	Wood-works	Metal-works	Oil mills	All 25 industry types
1970	560	76	92	60	66	995
1971	579	82	99	65	72	1068
1972	638	88	106	70	78	1141
1973	677	94	113	75	84	1214
1974	716	100	120	80	90	1287
1975	755	106	127	85	96	1360
1976	794	112	134	90	102	1433
1977	833	118	141	95	108	1506
1978	872	124	148	100	114	1579
1979	911	130	155	105	120	1652
1980	950	136	162	110	126	1725
1981	989	142	169	115	132	1795
1982	1025	148	176	120	138	1868
1983	1062	154	183	125	144	1941

Table 1.16 Input and Value added (in Birr) by Industry Type. (All Surveyed Towns)

Code	Industry Type	Input	Value added	Value added Per worker
215	Grain mills	2,532,171	2,460,837	1,350
220	Bakeries	10,494,170	6,790,385	4,130
221	Coffee & grain cleaning	785,547	12,903,129	9,665
312	Wood works	3,286,619	2,627,144	1,950
31201	Wood works (Service)	39,266	127,693	1,798
371	Metal works	951,349	513,016	1,545
37101	Metal works (Service)	81,782	190,244	1,961
233	Beverage industries	2,046,048	2,656,611	28,876
351	Clay & Cement products	525,631	380,918	832
223	Confectionaries	1,200,222	243,978	1,065
359	Stone crushing	232,463	207,730	975
253	Knit wear	242,747	613,115	2,800
330	Printing & Publishing	2,222,382	1,550,631	5,384
216	Oil mills	9,540,421	4,283,656	6,442
249	Plastic products	359,856	640,693	26,696
261	Leather Products	2,257,939	1,021,237	2,547
26101	Leather work (Service)	8,432	38,044	2,238
229	Coffee roasting	435,530	116,950	3,544
342	Perfume manufacture	910,320	966,750	18,241
373	Electric Injera oven	208,195	160,955	2,926
350	Glass products	267,329	393,550	9,599
258	Shirt factory	1,195,607	245,621	1,934
343	Paint manufacture	874,416	387,878	11,754
320	Paper products	484,664	311,281	3,578
399	Others (Unclassified)	2,359	8,429	766
	T O T A L	41,158,465	39,840,475	4,109

Table 1.17 Proportion of Establishments having bank relations.

Ser No.	Town	Have relations		Do not have relations	
		No.	%	No.	%
1	Addis Ababa	34	6	556	94
2	Assela	2	8	24	92
3	Awassa	1	6	17	94
4	Behr-Dar	4	13	26	87
5	Debre-Markos	1	3	33	97
6	Dessie	2	5	41	95
7	Dira-Dawa	4	8	45	92
8	Gonder	6	13	39	87
9	Jimra	1	2	48	98
10	Nazreth	10	19	43	81
11	Shashemene	1	4	25	96
	T O T A L	66	7	897	93

Table 2.1 ADDIS ABABA: Number of Establishments, Total and Average Employment.

Code	Industry Type	No. of Estab.		Persons engaged in ind. work			
		Actual	as % of total	Permanent employees	Total No. of workers	as % of all worker	Ave. No. per estab.
215	Grain mills	328	56	490	876	13	3
220	Bakeries	35	6	865	994	15	28
221	Coffee & grain cleaning	4	1	525	893	14	223
312	Wool works	48	8	846	980	15	20
31201	Wool works (Service)	10	2	47	54	1	5
371	Metal works	34	6	155	229	3	7
37101	Metal works (Service)	17	3	67	89	1	5
233	Beverage industry	3	1	69	73	1	24
351	Clay & Cement products	4	1	107	197	3	49
223	Confectionaries	6	1	129	173	3	29
359	Stone crushing	4	1	165	177	3	44
253	Knit wear	4	1	211	211	3	53
330	Printing and publishing	8	1	278	288	4	36
216	Oil mills	43	7	314	496	8	12
349	Plastic products	1	0	14	16	0	16
261	Leather products	23	2	381	401	6	17
26101	Leather work (Service)	3	1	13	17	0	6
229	Coffee roasting	3	1	24	33	1	11
342	Perfume manufacture	1	0	52	53	1	53
373	Electric Injera oven	2	0	55	55	1	26
350	Glass products	3	1	41	41	1	14
258	Shirt factory	3	1	123	127	2	42
343	Paint manufacture	1	0	33	33	1	33
320	Paper products	1	0	87	87	1	87
399	Others (Unclassified)	1	0	4	11	0	11
T O T A L		590	100	5,095	6,604	100	11

Table 2.2 ADDIS ABABA: Gross Value of Production, Salaries and Wages.

Code	Industry Type	Gross Value of Prod. or Service			Salaries & Wages paid	
		T O T A L	Ave. per estab.	Ave. per worker	T O T A L	Ave. per employee
215	Grain mills	2,470,340 ✓	7,532	2,820	254,578	520
220	Bakeries	10,444,966 ×	298,428	10,508	927,530	1,072
221	Coffee & grain cleaning	12,737,501 ×	3,184,375	14,264	399,153	760
312	Wood works	4,625,063 ✓	96,355	4,719	1,096,879	1,297
31201	Wood works (Service)	130,354 ✓	13,035	2,414	43,140	918
371	Metal works	849,884 ✓	24,997	3,711	210,342	1,357
37101	Metal works (Service)	260,526 ✓	15,325	2,927	139,115	2,076
233	Beverage industry	4,463,830 ✓	1,487,943	61,148	55,587	806
351	Clay & Cement products	352,085 ✓	88,021	1,787	105,696	988
223	Confectioneries	1,086,400 ×	181,067	6,280	119,167	924
359	Stone crushing	417,962 ✓	104,491	2,361	130,583	791
253	Knit wear	246,280 ✓	61,570	1,167	152,431	722
330	Printing and publishing	3,772,013 ✓	471,502	13,097	612,501	2,203
216	Oil mills	8,304,112 ✓	193,119	16,742	386,696	1,232
349	Plastic products	✓ 860,899 ✓	860,899	53,806	25,500	1,821
261	Leather products	3,279,176 ✓	142,573	8,177	507,314	1,332
26101	Leather work (Service)	46,476 ✓	15,492	2,734	17,808	1,370
229	Coffee roasting	552,480 ✓	184,160	16,742	23,940	998
342	Perfume manufacture	1,877,070 ✓	1,877,070	35,416	968,919	18,633
373	Electric H.jera oven	369,150 ✓	184,575	6,712	157,689	2,867
350	Glass products	660,879 ✓	220,293	16,119	64,841	1,581
258	Shirt factory	1,441,228 ✓	480,409	11,348	224,783	1,828
343	Paint manufacture	1,262,294 ✓	1,262,294	38,251	109,474	3,317
320	Paper products	795,943 ✓	795,943	9,149	75,060	863
399	Others (Unclassified)	10,788	10,788	981	3,840	960
	T O T A L	61,317,699	103,928	9,285	6,812,566	1,337

Table 2.3 ASSELA: number of Establishments, Total and Average Employment.

Code	Industry Type	No. of Estab.		Persons engaged in ind. work			
		Actual	as % of total	Permanent employees	Total No. of workers	as % of all worker	Ave. No. per estab.
215	Grain mills	20	77	58	58	42	3
220	Bakeries	1	4	13	15	11	15
312	Wood works	2	7	53	54	39	27
31201	Wood wrks (Service)	3	11	11	11	8	4
	T O T A L	26	100	135	138	100	5

Gross Value of production, Salaries and Wages

Code	Industry Type	Gross Value of Prod. or Service			Salaries & Wage paid	
		T O T A L	Ave. per estab.	Ave. per worker	T O T A L	Ave. per employee
215	Grain mills	144,927	7,246	2,499	32,672	563
220	Bakeries	154,200	154,200	10,280	9,912	762
312	Wood works	109,870	54,935	2,035	93,148	1,758
31201	Wood works (Service)	20,652	6,884	1,877	7,253	659
	T O T A L	429,649	16,525	3,113	142,185	1,059

Table 2.4 AWASSA: Number of Establishments, Total and Average Employment.

Code	Industry Type	No. of Estab.		Persons engaged in ind. work			
		Actual	as % of total	Permanent employees	Total No. of workers	as % of all worker	Ave. No. per estab.
215	Grain mills	14	78	27	53	29	4
220	Bakeries	1	6	6	8	4	8
312	Wood works	2	11	9	19	10	10
351	Clay & Cement products	1	6	93	103	56	103
	T O T A L	18	100	153	183	100	10

Gross Value of Production, Salaries and Wages

Code	Industry Type	Gross Value of Prod. or Service			Salaries & Wage paid	
		T O T A L	Ave. per estab.	Ave. per worker	T O T A L	Ave. per employee
215	Grain mill	159,585	11,399	3,011	10,680	396
220	Bakeries	181,750	181,750	22,718	3,600	600
312	Wood works	64,360	32,180	3,387	9,396	1,044
351	Clay & Cement products	190,532	190,532	2,049	79,164	851
	T O T A L	596,227	66,247	3,258	102,840	761

Table 2.5 Bahr-DAR: Number of Establishments, Total and Average Employment.

Code	Industry Type	No. of Estab.		Persons engaged in ind. work			
		Actual	as % of total	Permanent employees	Total No. of workers	as % of all worker	Ave. No. per estab.
215	Grain mills	13	43	25	47	23	4
220	Bakeries	2	7	29	38	19	19
312	Wood works	3	10	32	48	24	16
371	Metal works	1	3	2	5	2	5
351	Clay & Cement products	1	3	1	15	7	15
216	Oil Millr	10	33	33	49	24	5
	T O T A L	30	100	122	202	100	7

Gross Value of Production, Salaries and Wages.

Code	Industry Type	Gross Value of Prod. or Service			Salaries & Wages paid	
		T O T A L	Ave. per estab.	Ave. per worker	T O T A L	Ave. per employee
215	Grain mills	141,884	10,914	3,019	12,208	488
220	Bakeries	1,334,074	667,037	35,107	14,605	504
312	Wood works	67,612	22,537	1,409	19,350	605
371	Metal works	72,000	72,000	14,400	1,728	864
351	Clay & Cement products	16,640	16,640	1,109	384	384
216	Oil mills	2,138,109	213,811	43,635	17,751	538
	T O T A L	3,770,319	125,677	18,665	66,026	541

Table 2.6 DEBRE MAR'OS: Number of Establishments, Total and Average Employment.

Code	Industry Type	No. of Estab.		Persons engaged in ind. work			
		Actual	as % of total	Permanent employees	Total No. of workers	as % of all worker	Ave. No. per estab.
215	Grain mills	25	74	34	73	58	3
220	Bakeries	3	9	18	26	21	9
312	Wood works	2	6	4	8	6	4
371	Metal works	1	3	-	1	1	1
216	Oil mills	3	9	9	17	14	6
	T O T A L	34	100	65	125	100	4

Gross Value of Production, Salaries and Wages

Code	Industry Type	Gross Value of Prod. or Service			Salaries and Wages paid	
		T O T A L	Ave. per estab.	Ave. per worker	T O T A L	Ave. per employee
215	Grain mills ✓	143,886	5,755	1,971	15,478	455
220	Bakeries	212,056	70,685	8,156	13,762	765
312	Wood works	45,776	22,888	5,722	948	237
371	Metal works	9,922	9,922	9,922	-	-
216	Oil mills /	269,559	89,853	15,856	4,140	460
	T O T A L	469,143	13,798	3,753	34,328	528

Table 2.7 DESSIE: Number of Establishments, Total and Average Employment.

Code	Industry Type	No. of Estab.		Persons engaged in ind. work			
		Actual	as % of total	Permanent employees	Total No. of workers	as % of all worker	Ave. No. per estab.
215	Grain mills	22	51	135	231	46	11
220	Bakeries	2	5	59	63	13	32
221	Coffee & Grain cleaning	1	2	5	35	7	35
312	Wood works	9	21	22	36	7	4
371	Metal works	4	9	5	16	3	4
351	Clay & Cement products	1	2	20	81	16	81
223	Confectioneries	2	5	12	24	5	12
253	Knit wear	1	2	7	8	2	8
216	Oil mills	1	2	5	6	1	6
	T O T A L	43	100	270	500	100	12

Gross Value of Production, Salaries and Wages.

Code	Industry Type	Gross Value of Prod. or Service			Salaries and Wages paid	
		T O T A L	Ave. per estab.	Ave. per worker	T O T A L	Ave. per employee
215	Grain mills	629,167	28,599	2,724	103,010	763
220	Bakeries	648,000	324,000	10,286	78,265	1,327
221	Coffee & grain cleaning	38,750	38,750	1,107	9,060	1,812
312	Wood works	125,991	13,999	3,500	19,656	893
371	Metal works	29,760	7,440	1,860	4,220	844
351	Clay & Cement products	64,729	64,729	799	15,612	781
223	Confectioneries	200,400	100,200	8,350	6,872	573
253	Knit wear	9,582	9,582	1,198	8,328	1,190
216	Oil mills	53,416	53,416	8,903	3,432	686
	T O T A L	1,799,795	41,856	3,600	248,455	920

Table 2.8 DURE-DATA: Number of Establishments, Total and Average Employment.

Code	Industry Type	No. of Estab.		Persons engaged in ind. work			
		Actual	as % of total	Permanent employees	Total No. of workers	as % of all worker	Ave. No. per estab.
215	Grain mills	15	31	30	52	13	3
220	Bakeries	14	29	191	263	66	19
312	Wood works	6	12	29	35	9	6
31201	Wood works (Service)	1	2	3	4	1	4
371	Metal works	6	12	10	14	4	2
37101	Metal works (Service)	3	6	5	8	2	3
351	Clay & Cement products	3	6	15	17	4	6
223	Confectionaries	1	2	2	6	2	6
	T O T A L	49	100	285	399	100	8

Gross Value of Production, Salaries and Wages.

Code	Industry Type	Gross Value of Prod. or Service			Salaries and Wages paid	
		T O T A L	Ave. per estab.	Ave. per worker	T O T A L	Ave. per employee
215	Grain mills	159,229	10,615	3,062	25,285	843
220	Bakeries	2,880,615	205,758	10,953	195,723	1,025
312	Wood works	87,100	14,517	2,489	36,239	1,250
31201	Wood works (Service)	7,593	7,593	1,898	6,296	2,099
371	Metal works	100,642	16,774	7,189	6,748	675
37101	Metal works (Service)	11,500	3,833	1,438	6,240	1,243
351	Clay & Cement products	143,403	47,801	8,435	8,880	592
223	Confectionaries	42,200	42,200	7,033	2,160	1,080
	T O T A L	3,432,282	70,047	8,602	287,571	1,009

Table 2.9 GONDER: Number of Establishments, Total and Average Employment.

Code	Industry Type	No. of Estab.		Persons engaged in ind. work			
		Actual	as % of total	Permanent employees	Total No. of workers	as % of all worker	Ave. No. per estab.
215	Grain mills	20	44	139	181	45	9
220	Bakeries	2	4	65	82	21	41
312	Wood works	6	13	24	41	10	7
371	Metal works	6	13	10	24	6	4
351	Clay & Cement products	1	2	8	9	2	9
216	Oil mills	10	22	30	62	16	6
	T O T A L	45	100	276	399	100	9

Gross Value of Production, Salaries and Wages.

Code	Industry Type	Gross Value of Prod. or Service			Salaries and Wages paid	
		T O T A L	Ave. per estab.	Ave. per worker	T O T A L	Ave. per employee
215	Grain mills	315,155	15,758	1,741	72,775	524
220	Bakeries	327,180	163,590	3,990	43,263	666
312	Wood works	137,073	22,846	3,343	30,102	1,254
371	Metal works	102,807	17,135	4,284	7,442	744
351	Clay & Cement products	29,600	29,600	3,289	5,580	698
216	Oil mills	2,531,413	253,141	40,829	15,280	509
	T O T A L	3,443,228	76,516	8,630	174,442	632

Table 2.10 JIMMA: Number of Establishments, Total and Average Employment.

Code	Industry Type	No. of Estab.		Persons engaged in ind. work			
		Actual	as % of total	Permanent employees	Total No. of workers	as % of all worker	Ave. No. per estab.
215	Grain mills	24	49	65	98	23	4
220	Bakeries	8	16	93	106	25	13
221	Coffe & grain cleaning	6	12	24	43	10	7
312	Wood works	3	68	56	61	14	20
371	Metal works	4	8	6	15	3	4
233	Beverage industry	1	2	18	19	4	19
351	Clay & Cement products	1	2	2	27	6	27
223	Confectionaries	1	2	24	26	6	26
359	Stone crushing	1	2	36	36	8	36
	T C T A L	49	100	324	431	100	9

Gross Value of Production, Salaries and Wages.

Code	Industry Type	Gross Value of Prod. or Service			Salaries and Wages paid	
		T O T A L	Ave. per estab.	Ave. per worker	T O T A L	Ave. per employee
215	Grain mills	269,078	11,212	2,746	34,045	524
220	Bakeries	835,668 ✓	104,459	7,884	86,075	926
221	Coffe & grain cleaning	229,241 ✓	38,207	5,331	17,280	720
312	Wood works	294,910	98,303	4,835	53,979	964
371	Metal works	127,440	31,860	21,240	7,440	1,240
233	Beverage industry	238,829 ✓	238,829	15,570	17,932	996
351	Clay & Cement products	12,000	12,000	444	1,440	720
223	Confectionaries	115,200 ✓	115,200	5,431	13,891	570
359	Stone crushing	22,231	22,231	618	31,680	880
	T C T A L	2,144,597	43,767	4,976	263,762	814

Table 2.11 NAZARETH: Number of Establishments, Total and Average Employment.

Code	Industry Type	No. of Estab.		Persons engaged in ind. work			
		Actual	as % of total	Permament employees	Total No. of workers	as % of all worker	Ave. No. per estab.
215	Grain mills	30	57	58	87	15	3
220	Bakeries	3	6	31	34	6	11
221	Coffee & grain cleaning	4	8	178	364	61	91
312	Wood works	4	8	29	36	6	9
31201	Wood works (Service)	1	2	2	2	0	2
371	Metal works	4	8	18	21	4	5
351	Clay & Cement products	1	2	7	9	2	9
216	Oil mills	5	9	24	35	-	7
349	Plastic products	1	2	7	8	-	8
	T O T A L	53	100	354	596	100	11

Gross Value of Production, Salaries and Wages.

Code	Industry Type	Gross Value of Prod. or Service			Salaries and Wages paid	
		T O T A L	Ave. per estab.	Ave. per worker	T O T A L	Ave. per employee
215	Grain mills	265,154	8,838	3,048	26,846	463
220	Bakeries	158,046	52,682	4,648	27,091	874
221	Coffee / grain cleaning	656,184	164,046	1,802	132,386	744
312	Wood works	158,886	39,722	4,414	26,129	901
31201	Wood works (Service)	9,360	9,360	4,680	1,872	936
371	Metal works	151,800	37,950	7,229	27,492	1,527
351	Clay & Cement products	97,560	97,560	10,840	4,176	597
216	Oil mills	527,468	105,494	15,071	21,380	891
349	Plastic products	139,650	139,650	17,456	9,744	1,392
	T O T A L	2,164,108	40,832	3,631	277,116	783

Table 2.12 SHASHEMENE: Number of Establishments, Total and Average Employment.

Code	Industry Type	No. of Estab.		Persons engaged in ind. work			
		Actual	as % of total	Permanent employees	Total No. of workers	as % of all worker	Ave. No. per estab.
215	Grain mills	19	73	46	67	57	4
220	Bakeries	1	4	14	15	13	15
312	Wood works	3	12	25	29	25	10
371	Metal works	3	12	6	7	6	7
	T O T A L	26	100	91	118	100	5

Gross Value of Production, Salaries and Wages.

Code	Industry Type	Gross Value of Prod. or Service			Salaries and Wages paid	
		T O T A L	Ave. per estab.	Ave. per worker	T O T A L	Ave. per employee
215	Grain mills	294,603	15,505	4,397	22,220	483
220	Bakeries	108,000	108,000	7,200	10,044	717
312	Wood works	197,122	65,707	6,797	23,024	920
371	Metal works	20,110	6,703	2,872	6,048	1,008
	T O T A L	619,835	23,840	5,253	61,336	674

Table 2.13 ADDIS ABABA: Proportion of each industry type hindered from operating at full capacity by the indicated problems.

Code	Industry Type	Operating at full Capacity		Not operating at full capacity because of							
				Raw material Shortage		Power Shortage		Marketing Problems		Financial Problems	
		No.	%	No.	%	No.	%	No.	%	No.	%
215	Grain mills	5	2	178	54	8	2	182	55	66	20
220	Bakeries	1	3	27	77	1	3	4	11	1	3
221	Coffee & grain cleaning	-	-	1	25	-	-	2	50	1	25
312	Wood works	-	-	29	60	-	-	21	44	16	33
31201	Wood works (Service)	-	-	7	70	-	-	3	30	7	70
371	Metal works	-	-	22	65	-	-	15	44	8	24
37101	Metal works (Service)	-	-	8	47	-	-	7	41	4	24
233	Beverage industry	-	-	3	100	-	-	-	-	1	33
351	Clay & Cement products	-	-	1	25	1	25	4	100	1	25
223	Confectionaries	-	-	3	50	1	17	2	33	1	17
359	Stone crushing	-	-	4	100	-	-	1	25	2	50
253	Knit wear	-	-	4	100	-	-	1	25	1	25
330	Printing & publishing	1	-	5	63	-	-	2	25	3	38
216	Oil mills	-	-	40	93	-	-	-	-	6	14
349	Plastic products	-	-	-	-	-	-	-	-	-	-
261	Leather products	1	4	15	65	1	4	5	22	10	43
26101	Leather work (Service)	-	-	3	100	-	-	2	67	1	33
229	Coffee roasting	-	-	1	33	-	-	-	-	-	-
342	Perfume manufacture	-	-	1	100	-	-	-	-	-	-
373	Electric Injera oven	-	-	2	100	-	-	1	50	2	100
350	Glass products	-	-	1	33	-	-	1	33	1	33
258	Shirt factory	-	-	2	67	1	33	-	-	1	33
343	Paint manufacture	-	-	1	100	-	-	-	-	1	100
320	Paper products	-	-	1	100	-	-	-	-	-	-
399	Others (Unclassified)	-	-	1	100	-	-	-	-	-	-
	T O T A L	8	1	360	61	13	2	253	43	134	23

Table 2.14 ASSELA: Proportion of each industry type hindered from operating at full capacity by the indicated problems.

Code	Industry Type	Operating at full Capacity		Not operating at full capacity because of							
				Raw material Shortage		Power Shortage		Marketing Problems		Financial Problems	
		No.	%	No.	%	No.	%	No.	%	No.	%
215	Grain mills	1	5	20	100	20	100	-	-	-	-
220	Bakeries	-	-	1	100	-	-	-	-	-	-
312	Wood works	-	-	2	100	1	50	-	-	1	50
31201	Wood works (Service)	-	-	2	67	2	67	1	33	1	33
	T O T A L	1	4	25	96	23	88	1	4	2	8

Table 2.15 AWASSA

215	Grain mills	-	-	8	57	14	100	2	14	3	21
220	Bakeries	-	-	1	100	1	100	-	-	-	-
312	Wood works	-	-	2	100	2	100	1	50	-	-
351	Clay & Cement products	-	-	-	-	-	-	-	-	1	100
	T O T A L	-	-	11	61	17	94	3	17	4	22

Table 2.16 BAHR-DAR: Proportion of each industry type hindered from operating at full capacity by the indicated problems.

Code	Industry Type	Operating at full Capacity		Not operating at full capacity because of							
				Raw material Shortage		Power Shortage		Marketing Problems		Financial Problems	
		No.	%	No.	%	No.	%	No.	%	No.	%
215	Grain mills	-	-	4	31	-	-	3	23	3	23
220	Bakeries	-	-	1	50	-	-	-	-	1	100
312	Wood works	-	-	1	33	1	33	1	33	2	67
371	Metal works	-	-	1	100	-	-	-	-	1	100
351	Clay & Cement products	-	-	-	-	-	-	1	100	-	-
216	Oil mills	-	-	5	50	1	10	-	-	4	40
	T O T A L	-	-	12	40	2	7	5	17	11	37

Table 2.17 DEBRE-MARKOS

215	Grain mills	-	-	9	36	21	84	6	24	2	8
220	Bakeries	-	-	3	100	-	-	-	-	-	-
312	Wood works	-	-	2	100	-	-	-	-	2	100
371	Metal works	-	-	1	100	1	100	1	100	-	-
216	Oil millr	-	-	1	33	2	67	-	-	-	-
	T O T A L	-	-	16	47	24	71	7	21	4	12

Table 2.18 DESSIE: Proportion of each industry type hindered from operating at full capacity by the indicated problems.

Code	Industry Type	Operating at full Capacity		Not operating at full capacity because of							
				Raw material Shortage		Power Shortage		Marketing Problems		Financial Problems	
		No.	%	No.	%	No.	%	No.	%	No.	%
215	Grain mills	-	-	3	14	17	77	13	59	1	5
220	Bakeries	-	-	2	100	-	-	1	50	-	-
221	Coffee & grain cleaning	-	-	-	-	1	100	-	-	-	-
312	Wood works	-	-	9	100	5	56	4	44	3	33
371	Metal works	-	-	2	50	-	-	-	-	4	100
351	Clay & Cement products	-	-	1	100	-	-	-	-	1	100
223	Confectionaries	-	-	2	100	1	50	1	50	1	50
253	Knit wear	-	-	1	100	-	-	1	100	1	100
216	Oil mills	-	-	1	100	-	-	-	-	-	-
	T O T A L	-	-	21	49	24	56	20	47	11	26

Table 1.19 DIRE-DAWA

215	Grain mills	-	-	3	20	-	-	10	67	6	40
220	Bakeries	-	-	13	93	1	7	1	7	-	-
312	Wood works	-	-	5	83	-	-	2	33	1	17
31201	Wood works (Service)	-	-	1	100	-	-	-	-	1	100
371	Metal works	-	-	4	67	-	-	6	100	2	33
37101	Metal works (Service)	-	-	2	67	-	-	2	67	1	33
351	Clay & Cement products	-	-	-	-	-	-	3	100	1	33
223	Confectionaries	-	-	1	100	-	-	-	-	-	-
	T O T A L	-	-	29	59	1	2	24	49	12	24

Table 2.22 NAZARETH: Proportion of each industry type hindered from operating at full capacity by the indicated problems.

Code	Industry Type	Operating at full Capacity		Not operating at full capacity because of							
				Raw material Shortage		Power Shortage		Marketing Problems		Financial Problems	
		No.	%	No.	%	No.	%	No.	%	No.	%
215	Grain mills	1	3	6	20	3	10	16	53	9	30
220	Bakeries	-	-	3	100	1	33	-	-	-	-
221	Coffee & grain clearing	-	-	1	25	1	25	1	25	-	-
312	Wood works	-	-	2	50	-	-	1	25	1	25
31201	Wood works (Service)	-	-	1	100	-	-	-	-	-	-
371	Metal works	-	-	3	75	1	25	4	100	3	75
349	Plastic products	-	-	1	100	-	-	-	-	-	-
351	Clay & Cement products	-	-	1	100	-	-	-	-	-	-
216	Oil mills	-	-	4	80	2	40	-	-	-	-
	T O T A L	1	2	22	42	8	15	22	42	13	25

Table 2.23 SHASHEMENE

245	Grain mills	-	-	6	32	19	100	1	5	5	26
220	Bakeries	-	-	1	100	-	-	-	-	-	-
312	Wood works	-	-	3	100	2	67	-	-	1	33
371	Metal works	-	-	3	100	2	67	-	-	1	33
	T O T A L	-	-	13	50	23	88	1	4	7	27