

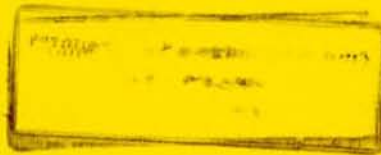
FEDERAL DEMOCRATIC REPUBLIC OF ETHIOPIA

CENTRAL STATISTICAL AUTHORITY

PRODUCERS' PRICES OF AGRICULTURAL
PRODUCTS AT ZONE LEVEL

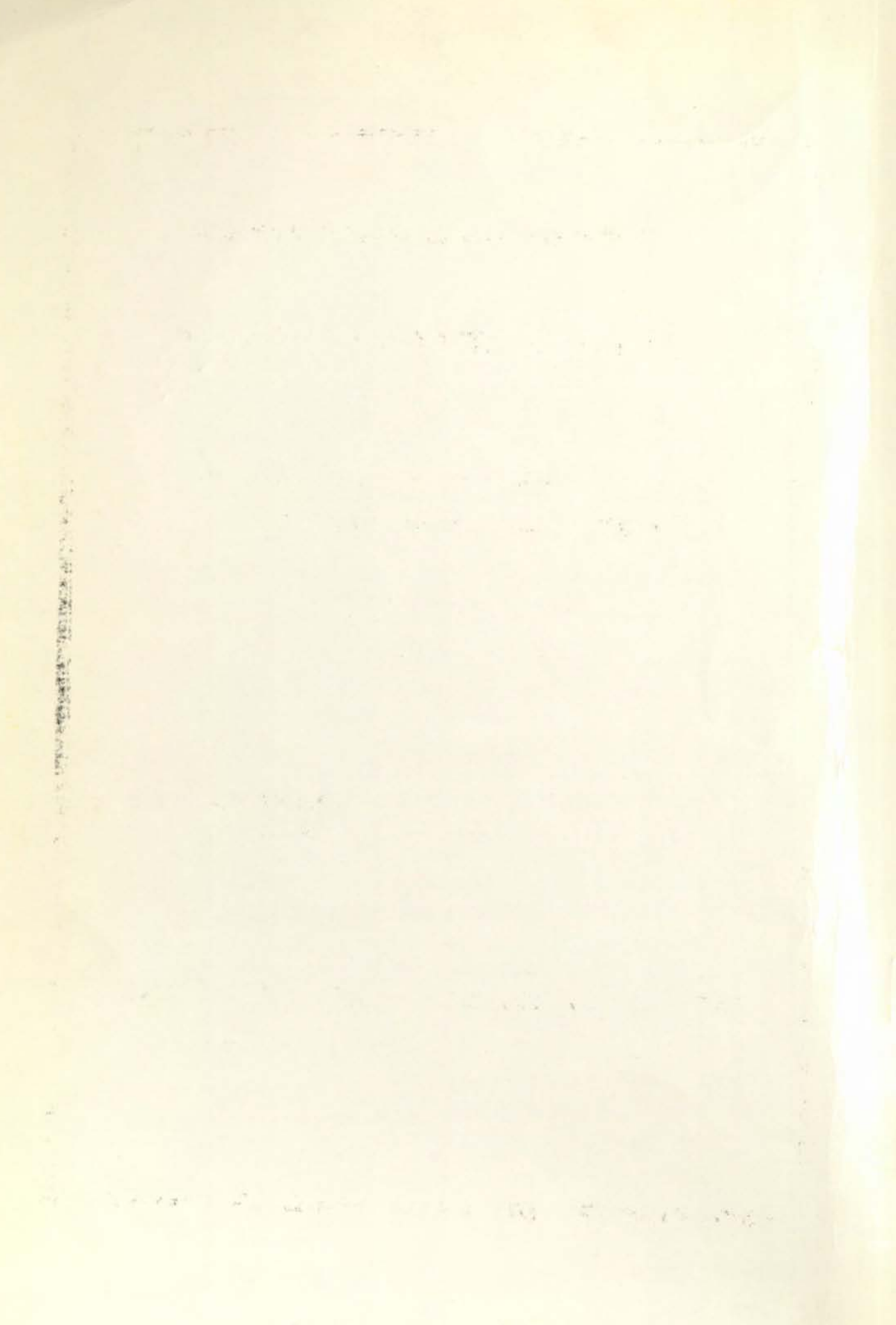
Monthly Statistical Report

June 2004 (Sene 1996)



ADDIS ABABA

September 2004



27/2/97
2/5 ACC-002473

C-~~27~~
5 CONTENTS

000 402

I. Introduction	(iii)
II. Objectives	(iii)
III. Scope and Coverage	(iv)
IV. Method of Data Collection	(iv)
V. Definitions	(ix)
VI. Note	(ix)

FEDERAL DEMOCRATIC REPUBLIC OF ETHIOPIA

CENTRAL STATISTICAL AUTHORITY

PRODUCERS' PRICES OF AGRICULTURAL PRODUCTS AT ZONE LEVEL

Monthly Statistical Report

June 2004 (Sene 1996)

ADDIS ABABA
September 2004

315 STATISTICAL BULLETIN 315

PREPARED AND PRINTED BY
CENTRAL STATISTICAL AUTHORITY
P.O. BOX 110 ADDIS ABABA
Tel. 251-11

CONTENTS

PAGE

I. Introduction -----	(II)
II. Objectives -----	(III)
III. Scope and Coverage -----	(IV)
IV. Method of Data Collection -----	(IV)
V. Definitions -----	(IX)
VI. Note -----	(IX)

Statistical Tables

Table 1 - Average Producers' Prices of Agricultural Products in Rural Areas by Zone, Tigray and Afar Regions, June 2004 (Sene 1996).....	3
Table 2 - Average Producers' Prices of Agricultural Products in Rural Areas by Zone, Amhara Region, June 2004 (Sene 1996).....	11
Table 3- Average Producers' Prices of Agricultural Products in Rural Areas by Zone, Oromiya Region, June 2004 (Sene 1996).....	19
Table 4- Average Producers' Prices of Agricultural Products in Rural Areas by Zone, Somali and Benishangul Gumuz Regions, June 2004 (Sene 1996).....	27
Table 5a - Average Producers' Prices of Agricultural Products in Rural Areas of ten Zones of SNNP Region, June 2004 (Sene 1996).....	35
Table 5b - Average Producers' Prices of Agricultural Products in Rural Areas of Special Weredas/Zone of SNNP Region, June 2004 (Sene 1996).....	43
Table 6 - Average Producers' Prices of Agricultural Products in Rural Areas by Zone, Gambela, Harari, Addis Ababa and Dire Dawa Regions, June 2004 (Sene 1996).....	51

I. Introduction

The Central Statistical Authority (CSA) has been conducting the Rural Integrated Household Survey Program (RIHSP) since 1980/81 (1973 Ethiopian Calendar). As part of the RIHSP the rural producers' prices of agricultural products survey is being conducted on a monthly basis since May 1981 in selected Farmers' Associations, (currently Enumeration Areas, EAs).

In an effort to fulfill data users demand, the CSA has been providing price data at zone level since September 1997. This report provides information on monthly average producers' prices of agricultural products for the month of June 2004 on the basis of the current administrative hierarchy, i.e., Regions and zones. However, data was missing for Gambela region for the month of June 2004. Due to lack of adequate space to accommodate the data for all zones and Regions over one page, the price data of the zones and Regions are presented in six tables as follows:

Table 1 refers to monthly average producers' prices of agricultural products in Tigray Region at zone level(i.e., North West Tigray, Western Tigray, Central Tigray, Eastern Tigray and Southern Tigray zones) and Afar Region and two of its zones (zone 1 and zone 3).

Table 2 presents monthly average producers' prices of agricultural products in Amhara Region by zone (i.e., North Gondar, South Gondar, North Wello, South Wello, North Shewa, East Gojam, West Gojam, Wag Hemra, Awi and Oromiya Zones).

Table 3 presents monthly average producers' prices of agricultural products in Oromiya Region and its zones (i.e., West Wellega, East Wellega, Illubabor, Jimma, West Shewa, North Shewa, East Shewa, Arssi, West Harerge, East Harerge, Bale, Borena and South West Shewa Zones).

Table 4 displays monthly average producers' prices of agricultural products in Somali Region and three of its zones (i.e., Shinile, Jigjiga and Liben) and Benishangul-Gumuz Region and its zones (i.e., Metekel, Asosa and Kamashi zones).

Table (5a) presents monthly average producers' prices of agricultural products in Southern Nations, Nationalities and Peoples, SNNP, Region and its zones (i.e., Gurage, Hadiya, Kembat- Tembaro, Sidama, Gedeo, Wolayita and South Omo Zones and Shaka, Kaffa and Gamogofa special weredas).

Table (5b) refers to monthly average producers' prices of agricultural products in Southern Nations, Nationalities and Peoples, SNNP, Region and its zones (i.e., Bench-Maji, Yem special wereda, Amaro special wereda, Burji special wereda, Konso special wereda, Dirashe special wereda, Dawro special wereda, Basketo special wereda, Kanta special wereda, Siltie special wereda, and Alaba special wereda).

Table 6 provides monthly average producers' prices of agricultural products in Gambella Region and its zones (i.e., zone 1 and zone 2), Harari Region, Addis Ababa Administrative Council and its zones (i.e., zone 3 and zone 6), Dire Dawa Administrative Council and national average.

Earlier issues on the same subject are Statistical Bulletins 44, 59, 65, 85, 95, 105, 116, 122, 137, 142, 148, 149, 155, 162, 166, 173, 176, 181, 188, 190, 199, 211, 212, 219, 239, 240, 241, 250, 251, 260, 268, 273, 277, 291, 292, 293, 294, 298, 300, 303, 306, 311, 312 and 314.

II. Objectives

The objectives of the survey are to:

- help policy makers take decisions on production and distribution of agricultural products;
- study the level of producers' price of agricultural products charged by farmers;

- study the disparities between prices at various distribution levels;
- study changes in the economy;
- help in the valuation of output for national accounts;
- construct producers' price indices and volume of production with respect to agricultural products.

III. Scope and Coverage

The scope and coverage of the agricultural producers' price survey are constantly under review and necessary improvements are effected from time to time in an effort to incorporate commodities mostly produced by private peasants. Consequently, starting from September 1998, the number of rural enumeration areas covered in price survey has reduced from 1420 to 446. The survey currently covers about 99 selected agricultural products in about 446 Enumeration Areas at country level as compared to 65 products in 361 Farmers' Association Areas in May 1981.

The major groups of agricultural products covered by the survey include cereals, pulses, oil seeds, vegetables and fruits, potatoes and other tubers, dairy products and eggs, spices, other food items and stimulants, livestock, and hides and skins.

IV. Method of Data Collection

Agricultural producers' price is collected from private peasant households or producers' cooperatives in the selected EAs in each month of the Ethiopian Calendar year, (September to August). Information on producers' price could only be collected from peasants or producers' cooperatives if and only if their own produce is sold during the survey month. For each agricultural product a maximum of three quantity and price quotations are collected from three different private peasants or producers' cooperatives. A Kitchen balance is used to measure the quantities sold by the producer. The data collection on producers' price is done over the 30 days of the

Table 4 displays monthly average producers' prices of agricultural products in Somali Region and three of its zones (i.e., Shinile, Jigjiga and Liben) and Benishangul-Gumuz Region and its zones (i.e., Metekel, Asosa and Kamashi zones).

Table (5a) presents monthly average producers' prices of agricultural products in Southern Nations, Nationalities and Peoples, SNNP, Region and its zones (i.e., Gurage, Hadiya, Kembat- Tembaro, Sidama, Gedeo, Wolayita and South Omo Zones and Shaka, Kaffa and Gamogofa special weredas).

Table (5b) refers to monthly average producers' prices of agricultural products in Southern Nations, Nationalities and Peoples, SNNP, Region and its zones (i.e., Bench-Maji, Yem special wereda, Amaro special wereda, Burji special wereda, Konso special wereda, Dirashe special wereda, Dawro special wereda, Basketo special wereda, Konta special wereda, Siltie special wereda, and Alaba special wereda).

Table 6 provides monthly average producers' prices of agricultural products in Gambella Region and its zones (i.e., zone 1 and zone 2), Harari Region, Addis Ababa Administrative Council and its zones (i.e., zone 3 and zone 6), Dire Dawa Administrative Council and national average.

Earlier issues on the same subject are Statistical Bulletins 44, 59, 65, 85, 95, 105, 116, 122, 137, 142, 148, 149, 155, 162, 166, 173, 176, 181, 188, 190, 199, 211, 212, 219, 239, 240, 241, 250, 251, 260, 268, 273, 277, 291, 292, 293, 294, 298, 300, 303, 306, 311, 312 and 314.

II. Objectives

The objectives of the survey are to:

- help policy makers take decisions on production and distribution of agricultural products;
- study the level of producers' price of agricultural products charged by farmers;

- study the disparities between prices at various distribution levels;
- study changes in the economy;
- help in the valuation of output for national accounts;
- construct producers' price indices and volume of production with respect to agricultural products.

III. Scope and Coverage

The scope and coverage of the agricultural producers' price survey are constantly under review and necessary improvements are effected from time to time in an effort to incorporate commodities mostly produced by private peasants. Consequently, starting from September 1998, the number of rural enumeration areas covered in price survey has reduced from 1420 to 446. The survey currently covers about 99 selected agricultural products in about 446 Enumeration Areas at country level as compared to 65 products in 361 Farmers' Association Areas in May 1981.

The major groups of agricultural products covered by the survey include cereals, pulses, oil seeds, vegetables and fruits, potatoes and other tubers, dairy products and eggs, spices, other food items and stimulants, livestock, and hides and skins.

IV. Method of Data Collection

Agricultural producers' price is collected from private peasant households or producers' cooperatives in the selected EAs in each month of the Ethiopian Calendar year, (September to August). Information on producers' price could only be collected from peasants or producers' cooperatives if and only if their own produce is sold during the survey month. For each agricultural product a maximum of three quantity and price quotations are collected from three different private peasants or producers' cooperatives. A Kitchen balance is used to measure the quantities sold by the producer. The data collection on producers' price is done over the 30 days of the

Table A: Distribution of Planned and Covered EAs by Reporting level**June 2004**

Reporting Level	Number of Sample EAs	
	Planned	Covered
Tigray	19	14
North West Tigray	6	4
Central Tigray	10	8
East Tigray	0	0
South Tigray	0	0
Western Tigray	3	2
Affar	6	4
Zone 1	3	2
Zone 3	3	2
Amhara	83	66
North Gondar	4	4
South Gondar	1	1
North Wello	8	8
South Wello	14	10
North Shewa	16	14
East Gojam	13	6
West Gojam	11	9
Wag Hemra	3	2
Awi	6	6
Oromiya zone	7	6

Table A (Continued):

Reporting Level	Number of Sample EAs	
	Planned	Covered
Oromiya	153	119
West Wellega	17	15
East Wellega	17	13
Illubabor	11	8
Jimma	12	10
West Shewa	10	8
North Shewa	10	5
East Shewa	10	4
Arssi	15	15
West Harerge	7	6
East Harerge	13	12
Bale	10	13
Borena	10	10
South West Shewa	7	-
Somali	7	5
Shinile	2	2
Jigjiga	3	2
Liben	2	1
Benishangul-Gumuz	19	18
Metekel	7	7
Asosa	7	6
Kamashi	5	5

Table A (Continued):

Reporting Level	Number of Sample EAs	
	Planned	Covered
SNNP	96	78
Gurage	8	8
Hadiya	4	3
Kembata-Tembaro	5	4
Sidama	8	7
Gedeo	4	4
Wolayta	7	7
South Omo	5	5
Shaka	3	3
Kaffa	8	3
Gamogofa	11	11
Bench-Maji	6	4
Yem special wereda	2	2
Amaro special wereda	2	2
Burji special wereda	2	1
Konso special wereda	2	1
Dirashe special wereda	2	1
Dawro special wereda	5	4
Basketo special wereda	2	2
Konta special wereda	2	2
Silte special wereda	6	3
Alaba Special wereda	2	1

Table A (Continued):

Reporting Level	Number of Sample EAs	
	Planned	Covered
Gambella	0	0
zone 1	0	0
zone 2	0	0
Harari	2	2
Addis Ababa	3	3
zone 3	2	2
zone 6	1	1
Dire Dawa	2	2
TOTAL	390	311

V. Definitions

- **Producers' price:** Agricultural producers' price is defined as the price of the transaction carried out by the peasant/ producer at the first point of sale for a clearly specified agricultural product. In most cases this price may not correspond to the farm-gate price as the farmer sells his product at a place outside his farm.
- **Enumeration Area:** Enumeration Area in rural is a locality that is less than or equal to farmers' association areas and mostly consists of about 150-200 households.
- **Farmers' Association:-** It is the lowest administrative unit in a settled rural area with its own jurisdiction. It is an association of rural dwellers formed by the inhabitants of a given area whose members are engaged either in agricultural or non-agricultural activities.

Table 1: Average Producers' Prices of Agricultural Products in Rural Areas by Zone.

VI. Note

- ◆ The average column provides a simple arithmetic average price for each product.
- ◆ The symbol "-" is used for data not available or doubtful.

ITEM	TIGRAY					AFAR	
	North Zone Tigray	East Zone Tigray	South Zone Tigray	West Zone Tigray	Central Zone Tigray	Zone Y	Zone X
CEREALS (TONNES)							
WHEAT WHITE	2.39	2.48	2.58	2.68	2.78	2.88	2.98
WHEAT RED	2.52	2.62	2.72	2.82	2.92	3.02	3.12
BARLEY	1.85	1.95	2.05	2.15	2.25	2.35	2.45
MAIZE	1.52	1.62	1.72	1.82	1.92	2.02	2.12
TEFF	1.28	1.38	1.48	1.58	1.68	1.78	1.88
ORZO	1.15	1.25	1.35	1.45	1.55	1.65	1.75
BERBER	1.05	1.15	1.25	1.35	1.45	1.55	1.65
AVENA	0.95	1.05	1.15	1.25	1.35	1.45	1.55
TRITICUM	0.85	0.95	1.05	1.15	1.25	1.35	1.45
RYE	0.75	0.85	0.95	1.05	1.15	1.25	1.35
BURO	0.65	0.75	0.85	0.95	1.05	1.15	1.25
SPINACH	0.55	0.65	0.75	0.85	0.95	1.05	1.15
BEANS	0.45	0.55	0.65	0.75	0.85	0.95	1.05
PEAS	0.35	0.45	0.55	0.65	0.75	0.85	0.95
SOYABEAN	0.25	0.35	0.45	0.55	0.65	0.75	0.85
CHICKEN	0.15	0.25	0.35	0.45	0.55	0.65	0.75
EGGS	0.05	0.15	0.25	0.35	0.45	0.55	0.65
DAIRY	0.05	0.15	0.25	0.35	0.45	0.55	0.65
MEAT	0.05	0.15	0.25	0.35	0.45	0.55	0.65
FRUIT	0.05	0.15	0.25	0.35	0.45	0.55	0.65
VEGETABLES	0.05	0.15	0.25	0.35	0.45	0.55	0.65
OTHER	0.05	0.15	0.25	0.35	0.45	0.55	0.65

Table 1: Average Producers' Prices of Agricultural Products in Rural Areas by Zone, Tigray and Afar Regions

Table 1: Average Producers' Prices of Agricultural Products in Rural Areas by Zone, Tigray and Afar Regions (Cont'd)

		P R I C E I N B I R R					June Sene	2004 1996		
		K I L L I L A N D Z O N E S								
ITEM	UNIT	T I G R A Y					Tigray Average	A F F A R		Afar Average
		North West Tigray	Central Tigray	Eastern Tigray	Southern Tigray	Western Tigray		Zone 1	Zone 3	
CEREALS UNMILLED										
'TEFF' WHITE	Kg	2.59	2.46	-	-	2.38	2.46	-	2.24	2.24
'TEFF' MIXED	Kg	2.52	2.56	-	-	2.00	2.49	-	-	-
'TEFF' BLACK	Kg	2.20	2.25	-	-	2.18	2.23	-	-	-
WHEAT WHITE	Kg	2.50	2.56	-	-	2.32	2.37	-	-	-
WHEAT MIXED	Kg	-	-	-	-	-	-	-	-	-
WHEAT BLACK	Kg	-	-	-	-	-	-	-	-	-
BARLEY WHITE	Kg	-	1.73	-	-	1.84	1.75	-	-	-
BARLEY MIXED	Kg	-	-	-	-	-	-	-	-	-
BARLEY BLACK	Kg	-	-	-	-	1.85	1.85	-	-	-
BARLEY /FOR BEER/	Kg	-	-	-	-	-	-	-	-	-
'SENEF KOLO GEBIS'	Kg	-	-	-	-	-	-	-	-	-
MAIZE	Kg	1.67	1.37	-	-	1.03	1.45	.89	.96	.90
DURRAH	Kg	-	1.52	-	-	-	1.52	-	-	-
AFRICAN MILLET	Kg	1.99	1.89	-	-	1.85	1.91	-	-	-
SORGHUM YELLOW	Kg	1.63	1.50	-	-	-	1.58	-	1.42	1.42
SORGHUM WHITE	Kg	1.65	1.85	-	-	1.64	1.73	-	-	-
SORGHUM RED	Kg	1.79	1.62	-	-	1.66	1.68	-	-	-
SORGHUM MIXED	Kg	-	1.71	-	-	-	1.71	-	-	-
OATS WITH COVER	Kg	-	-	-	-	-	-	-	-	-
RICE /LOCAL/	Kg	-	-	-	-	-	-	-	-	-
HULLED BERLEY /'TEMEZH'/	Kg	-	-	-	-	-	-	-	-	-
PULSES UNMILLED										
HORSE BEANS	Kg	2.74	2.52	-	-	2.84	2.62	-	-	-
CHICK PEAS	Kg	2.63	3.10	-	-	-	3.01	-	-	-
PEAS WHITE	Kg	-	-	-	-	-	-	-	-	-
PEAS MIXED	Kg	-	-	-	-	-	-	-	-	-
SOYA BEANS	Kg	-	2.57	-	-	-	2.57	-	-	-
LENTILS	Kg	-	4.06	-	-	-	4.06	-	-	-

Table 1: Average Producers' Prices of Agricultural Products in Rural Areas by Zone, Tigray and Afar Regions (Cont'd)

June
Sene 2004
1996

		PRICE IN BIRR								
CEREALS AND GRAINS		KILLILIL AND ZONES								
ITEM (CMT)	UNIT	TIGRAY					Tigray Average	AFGAR		Afar Average
		North West Tigray	Central Tigray	Eastern Tigray	Southern Tigray	Western Tigray		Zone 1	Zone 3	
HARICOT BEANS.....	Kg	1.70	1.70	-	-	1.70	-	-	-	
LIMA BEANS.....	Kg	1.48	1.70	-	-	1.48	-	-	-	
VETCH.....	Kg	1.70	1.70	-	-	1.70	-	-	-	
FENUGREEK.....	Kg	-	-	-	-	-	-	-	-	
OIL SEEDS										
NIGER SEED.....	Kg	1.57	3.58	-	-	3.80	3.50	-	-	
LINSEED WHITE.....	Kg	-	-	-	-	3.00	3.00	-	-	
LINSEED BLACK.....	Kg	-	2.67	-	-	-	2.67	-	-	
SESAME SEED.....	Kg	3.82	5.18	-	-	5.07	4.94	-	-	
SUNFLOWER.....	Kg	5.20	5.20	-	-	5.20	5.20	-	-	
RAPE SEED.....	Kg	5.20	5.20	-	-	5.20	5.20	-	-	
CASTOR BEANS.....	Kg	5.20	5.20	-	-	5.20	5.20	-	-	
GROUND NUTS.....	Kg	-	-	-	-	-	-	-	-	
VEGETABLES										
ETHIOPIAN KALE.....	Kg	-	-	-	-	-	-	-	-	
CABBAGE.....	Kg	-	-	-	-	-	-	-	-	
LETTUCE.....	Kg	-	-	-	-	-	-	-	-	
SPINACH.....	Kg	-	-	-	-	-	-	-	-	
CARROT.....	Kg	-	-	-	-	-	-	-	-	
TOMATO.....	Kg	-	2.50	-	-	-	2.50	-	-	
ONION.....	Kg	-	1.75	-	-	-	1.75	-	-	
GARLIC.....	Kg	-	-	-	-	-	-	-	-	
PEPPER GREEN.....	Kg	-	-	-	-	-	-	-	-	
GREEN PEAS.....	Kg	-	-	-	-	-	-	-	-	
BEEF ROOT.....	Kg	-	-	-	-	-	-	-	-	
CAULIFLOWER.....	Kg	-	-	-	-	-	-	-	-	
PUMPKIN.....	Kg	-	-	-	-	-	-	-	-	
SUGAR CANE.....	Kg	-	-	-	-	-	-	-	-	

Table 1: Average Producers' Prices of Agricultural Products in Rural Areas by Zone, Tigray and Afar Regions (Cont'd)

June
Sene

2004
1996

		PRICE IN BIRR								
		K I L L I L A N D					Z O N E S			
ITEM	UNIT	T I G R A Y					Tigray Average	A F F A R		Afar Average
		North West Tigray	Central Tigray	Eastern Tigray	Southern Tigray	Western Tigray		Zone 1	Zone 3	
FRUITS										
BANANA.....	Kg	-	1.72	-	-	1.72	-	-	-	-
ORANGE.....	Kg	-	-	-	-	-	-	-	-	-
LEMON.....	Kg	-	-	-	-	-	-	-	-	-
MANDARINE.....	Kg	-	-	-	-	-	-	-	-	-
PAPAYA.....	Kg	-	-	-	-	-	-	-	-	-
GRAPES.....	Kg	-	-	-	-	-	-	-	-	-
MANGO.....	Kg	-	-	-	-	-	-	-	-	-
GUAVA.....	Kg	-	-	-	-	-	-	-	-	-
AVOCADO.....	Kg	-	-	-	-	-	-	-	-	-
CITRON.....	Kg	-	-	-	-	-	-	-	-	-
PINE APPLE.....	Kg	-	-	-	-	-	-	-	-	-
CACTUS /BELES/.....	Kg	-	-	-	-	-	-	-	-	-
POTATOES AND OTHER TUBERS										
POTATO.....	Kg	-	-	-	-	-	-	-	-	-
SWEET POTATO.....	Kg	-	-	-	-	-	-	-	-	-
'KOCHO'/UNPROCESSED/.....	Kg	-	-	-	-	-	-	-	-	-
'BULA'.....	Kg	-	-	-	-	-	-	-	-	-
'GODERE'.....	Kg	-	-	-	-	-	-	-	-	-
SPICES										
PEPPER WHOLE.....	Kg	15.00	-	-	-	15.00	-	-	-	-
GINGER /NOT DRY/.....	Kg	-	-	-	-	-	-	-	-	-
WHITE CUMIN.....	Kg	-	-	-	-	-	-	-	-	-
BLACK CUMIN.....	Kg	-	-	-	-	-	-	-	-	-
TUMERIC /UNMILLED/.....	Kg	-	-	-	-	-	-	-	-	-
CARDAMON.....	Kg	-	-	-	-	-	-	-	-	-
FENUGREEK.....	Kg	-	-	-	-	-	-	-	-	-

Table 1: Average Producers' Prices of Agricultural Products in Rural Areas by Zone, Tigray and Afar Regions (Cont'd)

		P R I C E I N B I R R						June Sene	2004 1996	
		K I L L I L A N D Z O N E S								
I T E M	U N I T	T I G R A Y					Tigray Average	A F F A R		Affar Average
		North West Tigray	Central Tigray	Eastern Tigray	Southern Tigray	Western Tigray		Zone 1	Zone 3	
DAIRY PRODUCTS & EGGS										
MILK/UNPASTEURIZED/.....	Lt	-	-	-	-	-	-	3.08	1.67	2.51
BUTTER/UNREFINED/.....	Kg	-	-	-	-	-	-	-	-	-
CHEESE/COTTAGE/.....	Kg	-	-	-	-	-	-	-	-	-
EGGS/LOCAL/.....	DOZEN	4.57	3.40	-	-	4.68	3.97	-	3.00	3.00
HIDES AND SKINS										
BOVINE HIDES.....	No	20.00	-	-	-	-	20.00	-	-	-
SHEEP SKINS/DRY/.....	No	6.00	17.00	-	-	-	13.33	-	-	-
GOAT SKINS/DRY/.....	No	7.25	7.50	-	-	-	7.40	-	-	-
OTHERS										
BUCKTHORN LEAVES/DRIED/.....	Kg	2.89	2.99	-	-	-	2.96	-	-	-
'CHAT'.....	Kg	-	-	-	-	-	-	-	-	-
COFFEE BEANS.....	Kg	-	-	-	-	-	-	-	-	-
COFFEE WHOLE.....	Kg	-	-	-	-	-	-	-	-	-
HONEY /NOT REFINED/.....	Kg	14.00	16.04	-	-	12.54	14.25	-	-	-

Table 2: Average Producers' Prices of Agricultural
Products in Rural Areas by Zone,
Amhara Region

Table 2: Average Producers' Prices of Agricultural Products in Rural Areas by Zone, Amhara Region

June
Sene2004
1996

P R I C E I N B I R R

ITEM	UNIT	K I L L I L A N D Z O N E S										Amhara Average
		A M H A R A										
		North Gondar	South Gondar	North Wello	South Wello	North Shewa	East Gojam	West Gojam	Wag Hemra	Awii	Oromiya	
CEREALS UNMILLED												
'TEFF' WHITE.....	Kg	2.59	-	2.50	2.47	2.56	2.08	2.62	-	-	2.53	2.40
'TEFF' MIXED.....	Kg	2.38	2.39	2.36	2.24	2.24	2.08	2.03	2.68	1.88	2.20	2.19
'TEFF' BLACK.....	Kg	-	-	2.40	2.10	-	1.87	1.96	2.53	2.07	-	2.04
WHEAT WHITE.....	Kg	-	-	-	1.91	1.84	1.64	1.50	2.63	-	-	1.79
WHEAT MIXED.....	Kg	-	-	2.00	1.92	-	1.67	1.72	2.79	-	-	1.83
WHEAT BLACK.....	Kg	2.24	-	2.00	1.87	1.90	1.83	-	2.53	-	-	1.99
BARLEY WHITE.....	Kg	1.94	-	1.41	3.08	1.20	1.76	1.92	3.33	-	-	2.20
BARLEY MIXED.....	Kg	-	-	2.35	2.18	1.36	1.92	1.85	2.57	-	-	2.07
BARLEY BLACK.....	Kg	-	-	-	-	1.66	-	1.78	-	-	-	1.76
BARLEY /FOR BEER/.....	Kg	-	-	-	-	-	-	-	-	-	-	-
'SENEF KOLO GEBIS'.....	Kg	-	-	-	-	-	-	-	-	-	-	-
MAIZE.....	Kg	1.10	-	1.00	-	-	1.35	1.21	-	1.12	1.39	1.19
DURRAH.....	Kg	-	-	1.79	1.39	1.06	1.21	-	-	-	-	1.27
AFRICAN MILLET.....	Kg	1.37	-	-	1.52	-	1.18	1.55	-	1.30	-	1.49
SORGHUM YELLOW.....	Kg	-	-	1.85	1.56	1.18	-	-	-	-	1.42	1.40
SORGHUM WHITE.....	Kg	1.31	-	1.23	1.45	.95	-	1.50	-	-	1.63	1.32
SORGHUM RED.....	Kg	1.93	-	1.48	1.54	1.27	-	-	-	-	-	1.42
SORGHUM MIXED.....	Kg	1.56	-	1.32	1.44	.83	-	-	1.82	-	1.54	1.39
OATS WITH COVER.....	Kg	-	-	-	-	-	-	-	-	1.47	-	1.47
RICE /LOCAL/.....	Kg	-	-	-	-	-	-	-	-	-	-	-
HULLED BERLEY /'TEMEZH'/.....	Kg	-	-	-	-	-	-	-	-	-	-	-
PULSES UNMILLED												
HORSE BEANS.....	Kg	2.11	-	1.96	1.73	1.68	2.02	2.03	2.09	-	-	1.91
CHICK PEAS.....	Kg	2.10	2.15	1.76	1.70	1.84	1.60	-	-	-	1.66	1.70
PEAS WHITE.....	Kg	-	-	2.25	2.45	3.00	2.14	-	-	-	-	2.38
PEAS MIXED.....	Kg	-	-	2.52	2.14	2.19	2.16	2.30	2.64	-	2.85	2.25
SOYA BEANS.....	Kg	-	-	-	-	-	-	-	-	-	4.55	4.55
LENTILS.....	Kg	-	-	2.97	3.54	3.41	3.50	-	3.35	-	-	3.46
HARICOT BEANS.....	Kg	-	.89	-	.69	-	.89	-	-	-	-	.85

Table 2: Average Producers' Prices of Agricultural Products in Rural Areas by Zone, Amhara Region (Cont'd)

June
Sene

2004
1996

PRICE IN BIRR

ITEM	UNIT	K I L L I L A N D Z O N E S										Amhara Average	
		A M H A R A											
		North Gondar	South Gondar	North Wello	South Wello	North Shewa	East Gojam	West Gojam	Wag Hemra	Awi	Oromiya		
LIMA BEANS.....	Kg	-	-	-	-	1.22	-	-	-	-	-	1.35	1.25
VETCH.....	Kg	-	-	1.66	1.88	1.45	1.35	1.43	-	-	-	-	1.49
FENUGREEK.....	Kg	2.67	-	1.66	5.50	-	2.28	-	-	-	-	-	3.38
OIL SEEDS													
NIGER SEED.....	Kg	3.80	-	-	2.86	-	3.22	3.04	-	-	-	-	3.27
LINSEED WHITE.....	Kg	-	-	-	-	-	-	-	-	-	-	-	-
LINSEED BLACK.....	Kg	-	3.85	-	4.62	2.69	2.83	4.17	-	-	-	-	3.57
SESAME SEED.....	Kg	5.29	-	-	-	-	7.30	-	-	-	-	-	6.30
SUNFLOWER.....	Kg	3.09	2.00	1.69	-	-	-	-	-	-	-	-	2.26
RAPE SEED.....	Kg	-	-	-	-	-	-	-	-	-	-	-	-
CASTOR BEANS.....	Kg	-	-	-	-	-	-	-	-	-	-	-	-
GROUND NUTS.....	Kg	-	-	-	-	-	-	-	-	-	-	-	-
VEGETABLES													
ETHIOPIAN KALE.....	Kg	.72	-	-	-	-	-	-	-	-	-	-	.72
CABBAGE.....	Kg	-	-	-	-	-	-	-	-	-	-	-	-
LETTUCE.....	Kg	-	-	-	-	-	-	-	-	-	-	-	-
SPINACH.....	Kg	-	-	-	-	-	-	-	-	-	-	-	-
CARROT.....	Kg	-	-	-	-	-	-	-	-	-	-	-	-
TOMATO.....	Kg	-	-	-	-	-	-	-	-	-	-	-	-
ONION.....	Kg	3.31	-	1.61	-	2.18	1.29	1.25	-	-	-	-	2.01
GARLIC.....	Kg	3.76	4.00	4.75	-	6.44	2.02	2.42	-	-	-	-	4.00
PEPPER GREEN.....	Kg	3.75	-	1.05	-	1.67	-	2.00	-	-	-	-	2.12
GREEN PEAS.....	Kg	-	-	-	-	-	-	-	-	-	-	-	-
BEET ROOT.....	Kg	-	-	-	-	-	-	-	-	-	-	-	-
CAULIFLOWER.....	Kg	-	-	-	-	-	-	-	-	-	-	-	-
PUMPKIN.....	Kg	-	-	-	-	-	-	-	-	-	-	-	-
SUGAR CANE.....	Kg	-	-	-	-	.53	-	-	-	-	-	-	.53

Table 2: Average Producers' Prices of Agricultural Products in Rural Areas by Zone, Amhara Region (Cont'd)

June
Sene 2004
1996

PRICE IN BIRR

K I L L I L A N D Z O N E S												
A M H A R A												
ITEM	UNIT	North Gondar	South Gondar	North Wello	South Wello	North Shewa	East Gojam	West Gojam	Wag Hemra	Awii	Oromiya	Amhara Average
FRUITS												
BANANA.....	Kg	-	1.78	-	-	1.56	-	-	-	-	-	1.72
ORANGE.....	Kg	-	-	-	-	-	-	-	-	-	-	-
LEMON.....	Kg	-	-	-	-	1.16	-	-	-	-	-	1.16
MANDARINE.....	Kg	-	-	-	-	-	-	-	-	-	-	-
PAPAYA.....	Kg	-	-	-	-	-	-	-	-	-	-	-
GRAPES.....	Kg	-	-	-	-	-	-	-	-	-	-	-
MANGO.....	Kg	-	-	-	-	-	-	-	-	-	-	-
GUAVA.....	Kg	-	-	-	-	-	-	-	-	-	-	-
AVOCADO.....	Kg	-	-	-	-	-	-	-	-	-	-	-
CITRON.....	Kg	-	-	-	-	-	-	-	-	-	-	-
PINE APPLE.....	Kg	-	-	-	-	-	-	-	-	-	-	-
CACTUS /BELES/.....	Kg	-	-	-	-	-	-	-	-	-	-	-
POTATOES AND OTHER TUBERS												
POTATO.....	Kg	1.08	-	-	.86	-	.69	.76	-	.88	-	.78
SWEET POTATO.....	Kg	-	-	-	-	-	-	-	-	-	-	-
'KOCHO'/UNPROCESSED/.....	Kg	-	-	-	-	-	-	-	-	-	-	-
'BULA'.....	Kg	-	-	-	-	-	-	-	-	-	-	-
'GODERE'.....	Kg	-	-	-	-	-	-	-	-	-	-	-
SPICES												
PEPPER WHOLE.....	Kg	-	-	-	-	11.47	-	6.40	-	-	-	8.94
GINGER /NOT DRY/.....	Kg	-	-	-	-	-	-	-	-	-	-	-
WHITE CUMIN.....	Kg	-	-	-	-	-	-	-	-	-	-	-
BLACK CUMIN.....	Kg	-	-	-	2.14	-	-	4.55	-	-	-	3.35
TUMERIC /UNMILLED/.....	Kg	-	-	-	-	-	-	-	-	-	-	-
CARDAMON.....	Kg	-	-	-	-	-	-	-	-	-	-	-
FENUGREEK.....	Kg	-	-	-	-	-	-	2.38	-	-	-	2.38
CHILLIES.....	Kg	-	-	-	-	-	-	-	-	-	-	-

Table 2: Average Producers' Prices of Agricultural Products in Rural Areas by Zone, Amhara Region (Cont'd)

June
Sene

2004
1996

P R I C E I N B I R R

K I L L I L A N D Z O N E S

ITEM	UNIT	A M H A R A										Amhara Average	
		North Gondar	South Gondar	North Wello	South Wello	North Shewa	East Gojam	West Gojam	Wag Hemra	Awī	Oromiya		
CORIANDER.....	Kg	-	-	-	-	-	-	-	-	-	-	-	-
'SENAFICH'.....	Kg	-	-	-	-	-	-	-	-	-	-	-	-
BASIL /DRY/.....	Kg	-	-	9.10	-	5.81	-	-	-	-	-	-	7.46
SAVORY /DRY/.....	Kg	-	-	-	-	-	-	-	-	-	-	-	-
RUE /NOT DRY/.....	Kg	-	-	-	-	-	-	-	-	-	-	-	-
LIVESTOCK													
SHEEP/CASTRATED/.....	No	-	-	-	286.25	-	-	-	-	-	-	-	286.25
LAMB.....	No	105.00	-	108.33	79.72	65.46	87.50	98.86	82.00	98.33	80.83	-	83.24
OTHER SHEEP/10-15Kg/.....	No	70.00	-	103.00	85.78	66.73	176.67	117.67	-	177.00	-	-	108.57
GOAT/CASTRATED/.....	No	250.00	-	-	233.40	220.00	-	85.00	-	-	-	-	215.25
KID.....	No	106.67	-	58.25	58.25	48.00	77.71	80.17	97.40	-	63.88	-	71.50
OTHER GOAT/10-15Kg/.....	No	135.00	-	138.33	65.67	76.88	170.00	54.29	116.75	-	-	-	90.80
CALF/1-2Years/.....	No	-	-	-	-	-	680.00	-	-	-	145.00	-	412.50
HEIFER/2-4Years/.....	No	260.00	-	476.67	300.00	375.00	275.00	-	-	-	435.00	-	362.27
COW/4 Years & Above/.....	No	630.00	-	-	775.00	850.00	-	750.00	350.00	700.00	472.50	-	660.42
BULL/2-4Years/.....	No	423.33	-	460.00	320.00	556.67	820.00	487.50	-	395.00	555.00	-	487.38
OX/4 Years & Above/.....	No	918.75	480.00	636.00	799.23	1147.14	1088.33	720.00	612.50	875.00	860.00	-	863.50
PULLET/LOCAL/.....	No	5.69	5.50	5.06	5.15	4.47	6.80	8.11	3.50	6.17	4.70	-	5.52
HEN/LOCAL/.....	No	10.20	-	7.42	7.50	6.64	8.75	12.06	4.50	-	6.93	-	8.55
COCKEREL/LOCAL/.....	No	8.06	3.75	7.17	6.02	6.18	6.83	9.33	5.50	6.00	8.20	-	6.77
COCK/LOCAL/.....	No	11.40	-	8.22	7.50	8.63	9.50	13.33	5.00	11.00	8.31	-	9.24
DRAUGHT ANIMALS													
DONKEY /MALE/.....	No	-	-	260.00	233.33	250.00	170.00	180.00	-	-	200.00	-	220.00
HORSE /MALE/.....	No	-	-	-	-	-	-	-	-	-	-	-	-
MULE /MALE/.....	No	-	-	-	-	-	500.00	400.00	-	-	-	-	-
CAMEL /MALE/.....	No	-	-	-	-	-	-	-	-	-	-	-	450.00

Table 2: Average Producers' Prices of Agricultural Products in Rural Areas by Zone, Amhara Region (Cont'd)

June
Sene2004
1996

		P R I C E I N B I R R										
		K I L L I L A N D Z O N E S										
ITEM	UNIT	A M H A R A										Amhara Average
		North Gondar	South Gondar	North Wello	South Wello	North Shewa	East Gojam	West Gojam	Wag Hemra	Aw i	Oromiya	
DAIRY PRODUCTS & EGGS												
MILK/UNPASTEURIZED/.....	Lt	-	-	-	-	-	1.80	-	-	-	-	1.80
BUTTER/UNREFINED/.....	Kg	17.86	-	-	24.61	26.45	-	20.65	-	18.74	22.43	23.52
CHEESE/COTTAGE/.....	Kg	-	-	-	-	-	-	-	-	-	-	-
EGGS/LOCAL/.....	DOZEN	4.00	2.46	2.81	2.85	3.22	3.04	3.19	2.70	4.05	3.31	3.08
HIDES AND SKINS												
BOVINE HIDES.....	No	21.00	-	-	-	-	30.00	-	-	-	-	23.25
SHEEP SKINS/DRY/.....	No	-	-	-	22.90	-	-	-	-	-	-	22.90
GOAT SKINS/DRY/.....	No	9.50	-	9.75	10.29	-	10.50	-	-	-	-	10.07
OTHERS												
BUCKTHORN LEAVES/DRIED/.....	Kg	-	1.96	5.72	-	3.07	1.72	2.68	-	2.50	-	3.47
'CHAT'.....	Kg	-	-	31.11	-	-	-	-	-	-	8.61	22.11
COFFEE BEANS.....	Kg	-	-	12.49	-	10.87	-	-	-	-	-	11.84
COFFEE WHOLE.....	Kg	-	-	-	-	5.26	-	-	-	-	4.67	4.82
HONEY /NOT REFINED/.....	Kg	-	-	-	-	-	9.33	-	-	-	-	9.33

Table 3. Average production of agricultural products in India, 1950-51 (in million tons)

Crop	Year												Total	
	1950-51	1951-52	1952-53	1953-54	1954-55	1955-56	1956-57	1957-58	1958-59	1959-60	1960-61	1961-62		
Wheat	1.26	1.12	1.08	1.05	1.02	1.00	0.98	0.96	0.94	0.92	0.90	0.88	0.86	10.00
Rice	15.70	15.50	15.30	15.10	14.90	14.70	14.50	14.30	14.10	13.90	13.70	13.50	13.30	160.00
Coarse cereals	11.12	11.00	10.80	10.60	10.40	10.20	10.00	9.80	9.60	9.40	9.20	9.00	8.80	110.00
Oilseeds	2.25	2.20	2.15	2.10	2.05	2.00	1.95	1.90	1.85	1.80	1.75	1.70	1.65	20.00
Other crops	0.50	0.48	0.46	0.44	0.42	0.40	0.38	0.36	0.34	0.32	0.30	0.28	0.26	30.00
Total	30.83	30.30	29.73	29.19	28.67	28.15	27.63	27.11	26.60	26.08	25.56	25.04	24.52	290.00

Source: Ministry of Agriculture, Government of India, New Delhi, 1962.

Table 3: Average Producers' Prices of Agricultural
Products in Rural Areas by Zone,
Oromiya Region

Table 3: Average Producers' Prices of Agricultural Products in Rural Areas by Zone, Oromiya Region

PRICE IN BIRR														June Sene	2004 1996
K I L L I L A N D Z O N E S															
O R O M I Y A															
ITEM	UNIT	West Wellega	East Wellega	Illu- babor	Jimma	West Shewa	North Shewa	East Shewa	Arssi	West Harerge	East Harerge	Bale	Borena	North West Shewa	Oromiya Average
CEREALS UNMILLED															
'TEFF' WHITE.....	Kg	2.22	1.84	1.78	2.00	2.04	2.67	2.48	2.50	-	2.10	1.28	6.35	2.35	2.47
'TEFF' MIXED.....	Kg	2.11	1.64	1.72	2.08	1.66	2.26	2.40	2.19	-	-	1.27	1.92	2.15	1.96
'TEFF' BLACK.....	Kg	2.07	1.58	1.69	1.55	1.55	2.04	2.20	2.25	-	-	1.70	1.02	1.99	1.75
WHEAT WHITE.....	Kg	1.71	1.20	1.76	1.56	1.29	1.60	1.68	1.57	-	1.59	1.28	1.62	1.53	1.49
WHEAT MIXED.....	Kg	-	1.46	1.74	-	1.08	-	-	1.63	-	-	1.36	1.25	-	1.43
WHEAT BLACK.....	Kg	1.88	1.08	1.43	-	1.00	.50	-	-	-	-	-	-	-	1.17
BARLEY WHITE.....	Kg	2.23	1.45	-	.93	1.25	-	-	1.38	-	-	1.21	1.80	-	1.32
BARLEY MIXED.....	Kg	2.53	1.56	2.13	1.15	1.24	-	-	1.50	-	-	1.11	-	-	1.70
BARLEY BLACK.....	Kg	1.63	1.37	1.60	-	1.25	1.58	-	-	-	-	-	1.61	-	1.45
BARLEY /FOR BEER/.....	Kg	-	-	-	-	-	-	-	1.29	-	-	1.15	-	-	1.26
'SENEF KOLO GEBIS'.....	Kg	-	-	-	1.17	-	-	-	-	-	-	1.02	-	-	1.14
MAIZE.....	Kg	1.24	.90	1.04	1.08	.87	1.03	1.11	1.11	.74	1.26	.98	.79	1.21	1.04
DURRAH.....	Kg	.96	1.07	-	-	.95	-	.83	.85	3.97	-	1.01	-	-	1.31
AFRICAN MILLET.....	Kg	1.37	1.13	1.28	-	-	-	-	-	-	-	-	-	-	1.28
SORGHUM YELLOW.....	Kg	-	-	-	-	.88	1.31	-	.94	-	-	-	-	-	1.04
SORGHUM WHITE.....	Kg	1.17	1.28	1.48	1.15	.90	1.32	-	-	.88	-	-	-	-	1.18
SORGHUM RED.....	Kg	1.17	.97	1.04	1.00	.91	1.32	-	.91	.87	1.43	-	-	-	1.05
SORGHUM MIXED.....	Kg	1.29	.66	1.23	1.27	.76	-	-	-	-	-	-	-	-	.95
OATS WITH COVER.....	Kg	-	-	-	-	-	-	-	-	-	-	1.29	-	-	1.29
RICE /LOCAL/.....	Kg	-	-	-	-	-	-	-	-	-	-	-	-	-	-
HULLED BERLEY /'TEMEZH'/.....	Kg	-	-	-	-	-	-	-	-	-	-	-	-	-	-
PULSES UNMILLED															
HORSE BEANS.....	Kg	2.44	1.90	2.24	1.71	1.79	1.84	2.38	1.04	-	-	2.02	1.43	1.89	1.92
CHICK PEAS.....	Kg	-	-	1.96	-	3.68	2.13	1.45	-	-	-	1.28	-	1.58	1.74
PEAS WHITE.....	Kg	-	5.21	-	1.92	2.38	2.04	2.50	2.95	-	-	2.29	-	-	2.68
PEAS MIXED.....	Kg	2.65	2.20	2.20	-	1.78	2.60	-	2.30	-	-	2.06	-	-	2.17
SOYA BEANS.....	Kg	-	-	-	-	-	-	-	-	-	-	-	-	-	-
LENTILS.....	Kg	-	-	-	-	-	4.33	-	-	-	-	2.46	-	-	4.07

Table 3: Average Producers' Prices of Agricultural Products in Rural Areas by Zone, Oromiya Region (Cont'd)

PRICE IN BIRR														June Sene	2004 1996
K I L L I L A N D Z O N E S															
O R O M I Y A															
ITEM	UNIT	West Wellega	East Wellega	Illu- babor	Jimma	West Shewa	North Shewa	East Shewa	Arssi	West Harerge	East Harerge	Bale	Borena	North West Shewa	Oromiya Average
OIL SEEDS															
HARICOT BEANS.....	Kg	1.72	2.11	1.70	-	1.54	-	1.20	1.36	-	-	-	-	-	1.70
LIMA BEANS.....	Kg	-	3.87	-	1.69	-	-	-	-	.86	1.38	-	1.87	-	1.71
VETCH.....	Kg	-	-	-	-	-	1.85	-	-	-	-	-	-	1.39	1.71
FENUGREEK.....	Kg	-	-	-	-	-	2.00	3.00	1.50	-	3.22	1.21	-	1.79	2.30
OIL SEEDS															
NIGER SEED.....	Kg	2.33	2.91	-	-	3.01	-	-	-	-	-	-	-	2.94	2.85
LINSEED WHITE.....	Kg	-	-	-	-	-	-	-	-	-	-	-	-	-	-
LINSEED BLACK.....	Kg	-	4.69	-	-	2.75	2.50	-	3.00	-	4.78	2.97	-	2.71	3.31
SESAME SEED.....	Kg	-	6.09	-	-	-	-	-	-	-	-	-	-	-	6.09
SUNFLOWER.....	Kg	-	-	-	-	-	10.87	-	-	-	-	-	-	-	10.87
RAPE SEED.....	Kg	2.58	3.66	1.86	-	-	-	-	2.03	-	-	2.50	-	-	2.77
CASTOR BEANS.....	Kg	-	-	-	-	3.34	-	-	-	-	-	1.47	-	-	2.40
GROUND NUTS.....	Kg	-	3.65	-	-	-	-	-	-	-	-	-	-	-	3.65
VEGETABLES															
ETHIOPIAN KALE.....	Kg	.22	.58	.43	.33	.27	-	-	-	-	.76	.29	.29	.60	.36
CABBAGE.....	Kg	.18	-	-	-	-	-	-	-	-	-	-	-	-	.18
LETTUCE.....	Kg	-	-	-	-	-	-	-	-	-	-	-	-	-	-
SPINACH.....	Kg	-	-	-	-	-	-	-	-	-	-	-	-	-	-
CARROT.....	Kg	-	-	-	-	2.56	-	-	-	-	-	-	-	-	2.56
TOMATO.....	Kg	-	-	-	.67	1.64	-	1.16	.87	-	1.19	-	-	-	.93
ONION.....	Kg	2.94	3.78	-	3.29	1.48	-	-	1.40	1.75	1.00	1.34	-	-	1.94
GARLIC.....	Kg	7.14	3.38	3.13	-	6.34	5.13	-	-	-	1.90	1.79	-	-	4.58
PEPPER GREEN.....	Kg	.92	1.99	1.48	1.25	1.66	-	1.85	-	-	1.75	-	.57	-	1.40
GREEN PEAS.....	Kg	-	-	-	-	-	-	-	-	-	-	-	-	-	-
BEET ROOT.....	Kg	-	-	-	-	.80	-	-	-	-	-	-	-	-	.80
CAULIFLOWER.....	Kg	-	-	-	-	-	-	-	-	-	-	-	-	-	-
PUMPKIN.....	Kg	.22	-	-	-	-	-	.29	-	-	.20	.50	-	-	.33
SUGAR CANE.....	Kg	.29	.59	.28	.16	.93	-	.48	-	-	-	.31	.19	-	.35

Table 3: Average Producers' Prices of Agricultural Products in Rural Areas by Zone, Oromiya Region (Cont'd)

		PRICE IN BIRR													June 2004	June 1996
		KILLIL AND ZONES														
		O R O M I Y A														
ITEM	UNIT	West	East	Illu-		West	North	East		West	East		North	Oromiya		
		Wellega	Wellega	babor	Jimma	Shewa	Shewa	Shewa	Arssi	Harerge	Harerge	Bale	Borena	West Shewa	Average	
FRUITS																
BANANA.....	Kg	.48	.76	.67	.94	1.17	1.39	-	1.67	1.41	1.45	1.02	.34	1.05	.82	
ORANGE.....	Kg	.49	-	-	-	-	-	-	-	-	-	-	-	-	.49	
LEMON.....	Kg	.27	.39	-	1.00	-	-	-	-	-	-	-	-	-	.39	
MANDARINE.....	Kg	-	-	-	-	-	-	-	-	-	-	-	-	-	-	
PAPAYA.....	Kg	-	-	-	.30	-	-	.88	-	.97	-	.81	-	-	.78	
GRAPES.....	Kg	-	-	-	-	-	-	-	-	-	-	-	-	-	-	
MANGO.....	Kg	.42	1.29	.80	.91	-	-	2.43	-	1.05	-	1.89	-	.89		
GUAVA.....	Kg	-	-	-	-	-	-	-	-	-	-	.73	-	.73		
AVOCADO.....	Kg	1.46	-	-	1.96	-	-	-	-	-	-	-	-	1.71		
CITRON.....	Kg	-	-	-	-	-	-	-	-	-	-	-	-	-		
PINE APPLE.....	Kg	-	-	-	1.77	-	-	-	-	-	-	-	-	1.77		
CACTUS /BELES/.....	Kg	-	-	-	-	-	-	-	-	-	-	.13	-	.13		
POTATOES AND OTHER TUBERS																
POTATO.....	Kg	1.28	.82	.53	.55	.77	2.50	.48	.91	.25	.43	.96	.56	.40	.96	
SWEET POTATO.....	Kg	-	-	-	-	-	-	-	.34	.68	-	.56	-	.56		
'KOCHC'/UNPROCESSED/.....	Kg	-	-	-	.32	-	-	-	-	.40	.43	.40	-	.40		
'BULA'.....	Kg	-	1.09	-	-	1.48	-	-	-	-	-	-	-	1.38		
'GODERE'.....	Kg	-	-	-	-	-	-	-	-	-	-	-	-	-		
SPICES																
PEPPER WHOLE.....	Kg	6.64	6.75	-	-	8.87	-	-	8.00	-	-	-	-	7.38		
GINGER /NOT DRY/.....	Kg	1.45	1.18	-	-	-	-	-	-	-	-	-	-	1.37		
WHITE CUMIN.....	Kg	-	-	-	-	-	-	-	-	-	-	-	-	-		
BLACK CUMIN.....	Kg	-	-	-	-	-	-	-	4.14	-	3.58	-	-	3.86		
TUMERIC /UNMILLED/.....	Kg	1.03	-	-	-	-	-	-	-	-	-	-	-	1.03		
CARDAMON.....	Kg	-	-	-	-	-	-	-	-	-	-	-	-	-		
FENUGREEK.....	Kg	-	4.00	3.00	-	-	-	-	-	-	-	-	-	3.33		

Table 3: Average Producers' Prices of Agricultural Products in Rural Areas by Zone, Oromiya Region (Cont'd)

		PRICE IN BIRR													June Sene	2004 1996
		K I L L I L A N D Z O N E S														
		O R O M I Y A														
ITEM	UNIT	West Wellega	East Wellega	Illu- babor	Jimma	West Shewa	North Shewa	East Shewa	Arssi	West Harerge	East Harerge	Bale	Borena	North West Shewa	Oromiya Average	
CHILLIES.....	Kg	1.47	-	8.64	-	-	-	-	-	-	-	-	-	-	-	
CORIANDER.....	Kg	-	-	-	-	-	-	-	-	-	-	-	-	-	3.86	
'SENAFICH'.....	Kg	-	-	-	-	-	-	-	-	-	-	2.62	-	-	2.62	
BASIL /DRY/.....	Kg	-	-	-	-	-	-	-	-	-	-	-	-	-	-	
SAVORY /DRY/.....	Kg	-	-	-	-	-	-	-	-	-	-	2.50	-	-	2.50	
RUE /NOT DRY/.....	Kg	-	-	-	-	1.39	1.00	-	-	-	-	-	-	-	-	
LIVESTOCK																
SHEEP/CASTRATED/.....	No	210.00	212.86	-	210.00	125.00	243.33	-	220.00	-	250.00	-	127.50	365.00	215.80	
LAMB.....	No	111.18	99.35	100.88	85.94	94.50	101.58	75.06	103.07	-	115.00	100.00	94.57	99.71	97.92	
OTHER SHEEP/10-15kg/.....	No	123.33	91.94	101.70	90.68	99.00	84.17	104.50	88.64	143.33	114.25	74.86	79.33	96.67	96.32	
GOAT/CASTRATED/.....	No	211.67	130.40	-	130.00	-	165.00	110.00	208.33	-	300.00	127.33	110.00	-	147.11	
KID.....	No	76.33	68.92	74.00	64.24	57.85	62.67	68.45	83.38	76.25	66.30	80.79	77.22	65.62	72.94	
OTHER GOAT/10-15kg/.....	No	71.00	62.50	60.50	53.33	-	85.00	88.18	97.05	116.25	98.75	60.95	95.00	53.60	77.55	
CALF/1-2Years/.....	No	262.50	166.67	261.43	185.00	176.25	785.00	226.67	-	255.00	100.00	270.00	211.67	163.75	247.32	
HEIFER/2-4Years/.....	No	364.44	402.50	324.38	300.00	276.36	292.00	247.86	297.20	343.75	283.33	312.59	485.00	288.75	322.95	
COW/4 Years & Above/.....	No	448.18	468.00	532.00	460.00	453.33	426.43	405.56	535.00	626.00	605.00	443.18	551.43	554.00	490.82	
BULL/2-4Years/.....	No	387.50	440.45	452.86	383.13	274.00	291.43	396.11	268.57	398.00	810.00	398.35	436.43	433.33	407.68	
OX/4 Years & Above/.....	No	704.21	751.00	675.78	722.31	868.57	1095.00	742.86	956.00	1238.89	1048.33	708.06	1014.29	878.33	846.22	
PULLET/LOCAL/.....	No	6.64	6.33	4.95	5.09	5.71	6.21	5.51	5.90	3.17	4.25	3.13	3.78	6.09	5.31	
HEN/LOCAL/.....	No	8.85	7.61	6.02	6.73	7.91	9.31	8.33	6.92	4.68	4.29	4.15	5.11	9.20	6.98	
COCKEREL/LOCAL/.....	No	7.83	8.71	9.55	6.38	8.33	8.90	7.63	8.40	5.50	4.50	4.85	4.35	8.42	7.54	
COCK/LOCAL/.....	No	14.90	11.81	10.68	10.08	12.71	13.41	11.65	8.74	6.67	8.22	6.59	10.25	13.75	11.02	
DRAUGHT ANIMALS																
DONKEY /MALE/.....	No	351.67	338.33	-	252.00	280.00	202.50	220.00	190.00	-	375.00	-	303.00	300.00	298.65	
HORSE /MALE/.....	No	-	-	420.00	366.67	-	625.00	-	366.67	-	-	-	-	-	426.92	
MULE /MALE/.....	No	1400.00	-	-	-	-	1566.67	-	1100.00	-	-	-	-	-	1400.00	
CAMEL /MALE/.....	No	-	-	-	-	-	-	-	-	-	-	800.00	-	-	1350.00	
															800.00	

Table 3: Average Producers' Prices of Agricultural Products in Rural Areas by Zone, Oromiya Region (Cont'd)

PRICE IN BIRR															June Sene	2004 1996
K I L L I L A N D Z O N E S																
ITEM	UNIT	O R O M I Y A														Oromiya Average
		West Wellega	East Wellega	Illu- babor	Jimma	West Shewa	North Shewa	East Shewa	Arssi	West Harerge	East Harerge	Bale	Borena	North West Shewa		
DAIRY PRODUCTS & EGGS																
MILK/UNPASTEURIZED/.....	Lt	-	-	-	2.67	1.05	-	-	1.50	2.28	2.64	2.19	2.44	-	2.40	
BUTTER/UNREFINED/.....	Kg	16.76	19.84	18.55	22.04	20.11	23.64	24.50	26.67	27.02	-	20.80	23.01	21.16	21.01	
CHEESE/COTTAGE/.....	Kg	-	-	-	1.84	-	4.27	6.39	-	-	-	-	-	-	3.37	
EGGS/LOCAL/.....	DOZEN	4.81	4.03	3.56	3.19	3.58	3.60	3.36	3.04	3.11	3.48	2.41	3.58	3.54	3.53	
HIDES AND SKINS																
BOVINE HIDES.....	No	9.50	5.00	-	-	9.00	20.00	-	-	-	-	-	-	-	12.75	
SHEEP SKINS/DRY/.....	No	-	15.00	-	29.50	19.00	-	-	30.00	-	-	25.00	-	-	25.91	
GOAT SKINS/DRY/.....	No	-	7.00	-	5.00	-	9.67	7.00	8.00	-	-	-	-	8.00	8.42	
OTHERS																
BUCKTHORN LEAVES/DRIED/...	Kg	-	-	-	-	4.87	1.25	-	2.62	-	-	2.27	-	-	2.83	
'CHAT'.....	Kg	1.57	-	2.07	3.63	-	-	-	3.82	3.26	6.72	7.07	-	.37	4.06	
COFFEE BEANS.....	Kg	-	8.85	-	8.00	-	-	-	-	13.84	14.12	-	-	-	12.55	
COFFEE WHOLE.....	Kg	3.80	5.61	4.38	4.24	-	-	-	6.50	-	-	4.43	4.00	-	4.18	
HONEY /NOT REFINED/.....	Kg	8.01	5.95	-	-	-	11.60	16.00	-	-	-	6.65	7.58	-	7.48	

Table 4. Average Producers' Prices of Agricultural
Products in Rural Areas by Zone,
Somali and Benishangul Gumuz Regions

Table 4: Average Producers' Prices of Agricultural Products in Rural Areas by Zone, Somale and Benishangul-Gumuz Regions (Cont'd)

June 2004
Sene 1996

PRICE IN BIRR

		K I L L I L A N D Z O N E S							
ITEM	UNIT	S O M A L I			Somali Average	B E N I S H A N G U L - G U M U Z			Benishangul -Gumuz Average
		Shinile	Jig Jiga	Liben		Metekel	Asosa	Kamashi	

CEREALS UNMILLED

'TEFF' WHITE.....	Kg	-	-	-	-	-	-	1.62	1.62
'TEFF' MIXED.....	Kg	-	-	-	-	1.74	2.80	-	2.05
'TEFF' BLACK.....	Kg	-	-	-	-	1.62	-	1.79	1.68
WHEAT WHITE.....	Kg	-	-	-	-	-	-	-	-
WHEAT MIXED.....	Kg	-	-	-	-	-	-	-	-
WHEAT BLACK.....	Kg	-	-	-	-	-	-	-	-
BARLEY WHITE.....	Kg	-	-	-	-	-	-	-	-
BARLEY MIXED.....	Kg	-	-	-	-	-	-	-	-
BARLEY BLACK.....	Kg	-	-	-	-	-	-	-	-
BARLEY /FOR BEER/.....	Kg	-	-	-	-	-	-	-	-
'SENEF KOLO GEBIS'.....	Kg	-	-	-	-	.88	1.18	1.20	1.12
MAIZE.....	Kg	-	-	-	-	-	-	-	-
DURRAH.....	Kg	-	-	-	-	-	-	-	-
AFRICAN MILLET.....	Kg	-	-	-	-	1.25	.92	1.14	1.16
SORGHUM YELLOW.....	Kg	-	-	-	-	1.44	-	1.27	1.36
SORGHUM WHITE.....	Kg	-	-	-	-	1.06	1.47	.92	1.20
SORGHUM RED.....	Kg	-	-	-	-	-	1.43	1.01	1.19
SORGHUM MIXED.....	Kg	-	-	-	-	-	1.18	1.08	1.14
OATS WITH COVER.....	Kg	-	-	-	-	-	-	-	-
RICE /LOCAL/.....	Kg	-	-	-	-	-	-	-	-
HULLED BERLEY /'TEMEZH'/.....	Kg	-	-	-	-	-	-	-	-

PULSES UNMILLED

HORSE BEANS.....	Kg	-	-	-	-	2.47	-	-	2.47
CHICK PEAS.....	Kg	-	-	-	-	-	-	-	-
PEAS WHITE.....	Kg	-	-	-	-	-	-	-	-
PEAS MIXED.....	Kg	-	-	-	-	-	-	-	-
SOYA BEANS.....	Kg	-	-	-	-	-	-	-	-
LENTILS.....	Kg	-	-	-	-	-	-	-	-
HARICOT BEANS.....	Kg	-	-	-	-	-	2.01	1.87	1.93

Table 4: Average Producers' Prices of Agricultural Products in Rural Areas by Zone, Somale and Benishangul-Gumuz Regions (Cont'd)

June
Sene

2004
1996

PRICE IN BIRR

ITEM	UNIT	K I L L I L A N D Z O N E S							Benishangul -Gumuz Average
		S O M A L I			Somali Average	B E N I S H A N G U L - G U M U Z			
		Shinile	Jig Jiga	Liben		Metekel	Asosa	Kamashi	
LIMA BEANS.....	Kg	-	-	-	-	1.74	-	2.13	1.96
VETCH.....	Kg	-	-	-	-	-	-	-	-
FENUGREEK.....	Kg	-	-	-	-	-	-	-	-
OIL SEEDS									
NIGER SEED.....	Kg	-	-	-	-	2.80	-	-	2.80
LINSEED WHITE.....	Kg	-	-	-	-	-	-	-	-
LINSEED BLACK.....	Kg	-	-	-	-	-	-	-	-
SESAME SEED.....	Kg	-	-	-	-	4.92	-	7.34	5.89
SUNFLOWER.....	Kg	-	-	-	-	-	-	-	-
RAPE SEED.....	Kg	-	-	-	-	-	-	3.38	3.38
CASTOR BEANS.....	Kg	-	-	-	-	-	-	1.64	1.64
GROUND NUTS.....	Kg	-	-	-	-	3.38	-	-	3.38
VEGETABLES									
ETHIOPIAN KALE.....	Kg	-	-	-	-	-	-	-	-
CABBAGE.....	Kg	-	-	-	-	-	.26	.26	.26
LETTUCE.....	Kg	-	-	-	-	-	-	-	-
SPINACH.....	Kg	-	-	-	-	-	-	-	-
CARROT.....	Kg	-	-	-	-	-	-	-	-
TOMATO.....	Kg	-	-	-	-	-	-	-	-
ONION.....	Kg	-	-	-	-	.89	-	-	.89
GARLIC.....	Kg	-	-	-	-	-	-	-	-
PEPPER GREEN.....	Kg	-	-	-	-	1.33	-	-	1.33
GREEN PEAS.....	Kg	-	-	-	-	2.00	2.06	2.08	2.06
BEET ROOT.....	Kg	1.05	-	-	1.05	-	-	-	-
CAULIFLOWER.....	Kg	-	-	-	-	-	-	-	-
PUMPKIN.....	Kg	-	-	-	-	-	-	-	-
SUGAR CANE.....	Kg	-	-	-	-	1.04	-	-	1.04

Table 4: Average Producers' Prices of Agricultural Products in Rural Areas by Zone, Somale and Benishangul-Gumuz Regions (Cont'd)

June 2004
Sene 1996

PRICE IN BIRR

ITEM	UNIT	SOMALI			Somali Average	BENISHANGUL-GUMUZ			Benishangul-Gumuz Average
		Shinile	Jig Jiga	Liben		Metekel	Asosa	Kamashi	
FRUITS									
BANANA	Kg	-	-	-	-	.43	.93	.70	
ORANGE	Kg	-	-	-	-	-	-	-	
LEMON	Kg	.24	-	-	.24	-	-	-	
MANDARINE	Kg	-	-	-	-	-	-	-	
PAPAYA	Kg	-	-	-	-	-	-	-	
GRAPES	Kg	-	-	-	-	-	-	-	
MANGO	Kg	-	-	-	-	.54	.46	.51	
GUAVA	Kg	-	-	-	-	-	-	-	
AVOCADO	Kg	-	-	-	-	-	-	-	
CITRON	Kg	-	-	-	-	-	-	-	
PINE APPLE	Kg	-	-	-	-	-	-	-	
CACTUS /BELES/	Kg	-	-	-	-	-	-	-	
POTATOES AND OTHER TUBERS									
POTATO	Kg	-	-	-	-	1.15	-	1.15	
SWEET POTATO	Kg	-	-	-	-	-	-	-	
'KOCHO'/UNPROCESSED/	Kg	-	-	-	-	-	-	-	
'BULA'	Kg	-	-	-	-	-	-	-	
'GODERE'	Kg	-	-	-	-	-	-	-	
SPICES									
PEPPER WHOLE	Kg	-	-	-	-	-	14.24	14.24	
GINGER /NOT DRY/	Kg	-	-	-	-	-	-	-	
WHITE CUMIN	Kg	-	-	-	-	-	-	-	
BLACK CUMIN	Kg	-	-	-	-	-	-	-	
TUMERIC /UNMILLED/	Kg	-	-	-	-	-	-	-	
CARDAMON	Kg	-	-	-	-	-	-	-	
FENUGREEK	Kg	-	-	-	-	-	-	-	
CHILLIES	Kg	-	-	-	-	-	-	-	

Table 4: Average Producers' Prices of Agricultural Products in Rural Areas by Zone, Somali and Benishangul-Gumuz Regions (Cont'd)

June
Sene 2004
1996

		PRICE IN BIRR							
		KILLIL AND ZONES							
ITEM	UNIT	SOMALI			Somali Average	BENISHANGUL-GUMUZ			Benishangul -Gumuz Average
		Shinile	Jig Jiga	Liben		Metekel	Asosa	Kamashi	
CORIANDER.....	Kg	-	-	-	-	-	5.88	-	5.88
'SENAFICH'.....	Kg	-	-	-	-	-	-	-	-
BASIL /DRY/.....	Kg	-	-	-	-	-	-	-	-
SAVORY /DRY/.....	Kg	-	-	-	-	-	-	-	-
RUE /NOT DRY/.....	Kg	-	-	-	-	-	-	-	-
LIVESTOCK									
SHEEP/CASTRATED/.....	No	-	-	-	-	-	-	-	-
LAMB.....	No	-	92.50	-	92.50	145.80	-	-	145.80
OTHER SHEEP/10-15kg/.....	No	-	-	-	-	-	-	100.00	100.00
GOAT/CASTRATED/.....	No	-	-	-	-	118.33	140.00	-	127.00
KID.....	No	-	70.00	-	70.00	-	65.17	108.33	79.56
OTHER GOAT/10-15kg/.....	No	60.00	53.33	55.00	55.00	-	98.50	39.17	62.90
CALF/1-2Years/.....	No	-	-	-	-	300.00	-	-	300.00
HEIFER/2-4Years/.....	No	-	-	-	-	-	-	-	-
COW/4 Years & Above/.....	No	-	-	-	-	1200.00	600.00	730.00	845.71
BULL/2-4Years/.....	No	-	-	-	-	-	-	400.00	400.00
OX/4 Years & Above/.....	No	-	-	-	-	-	800.00	705.00	724.00
PULLET/LOCAL/.....	No	-	-	-	-	10.13	8.00	5.50	8.35
HEN/LOCAL/.....	No	-	5.50	5.05	5.23	12.00	12.64	11.63	12.36
COCKEREL/LOCAL/.....	No	-	-	-	-	8.85	9.79	7.50	8.92
COCK/LOCAL/.....	No	-	6.00	6.74	6.37	13.33	16.00	16.44	15.57
DRAUGHT ANIMALS									
DONKEY /MALE/.....	No	-	-	-	-	170.00	-	330.00	250.00
HORSE /MALE/.....	No	-	-	-	-	-	-	-	-
MULE /MALE/.....	No	-	-	-	-	-	-	-	-
CAMEL /MALE/.....	No	-	-	-	-	-	-	-	-

Table 4: Average Producers' Prices of Agricultural Products in Rural Areas by Zone, Somali and Benishangul-Gumuz Regions (Cont'd)

June
Sene

2004
1996

P R I C E I N B I R R

ITEM	UNIT	K I L L I L A N D Z O N E S							
		S O M A L I			Somali Average	B E N I S H A N G U L - G U M U Z			Benishangul -Gumuz Average
		Shinile	Jig Jiga	Liben		Metekel	Asosa	Kamashi	
DAIRY PRODUCTS & EGGS									
MILK/UNPASTEURIZED/.....	Lt	2.89	2.47	3.04	2.72	1.20	-	-	1.20
BUTTER/UNREFINED/.....	Kg	-	-	-	-	16.49	18.94	15.47	17.31
CHEESE/COTTAGE/.....	Kg	-	-	-	-	-	-	-	-
EGGS/LOCAL/.....	DOZEN	3.00	3.00	4.04	3.35	2.98	4.40	3.72	3.93
HIDES AND SKINS									
BOVINE HIDES.....	No	-	-	-	-	-	-	-	-
SHEEP SKINS/DRY/.....	No	-	-	-	-	-	-	-	-
GOAT SKINS/DRY/.....	No	-	-	-	-	-	-	-	-
OTHERS									
BUCKTHORN LEAVES/DRIED/.....	Kg	-	-	-	-	-	-	-	-
'CHAT'.....	Kg	5.15	16.67	-	9.76	-	1.81	-	1.81
COFFEE BEANS.....	Kg	-	-	-	-	-	-	-	-
COFFEE WHOLE.....	Kg	-	-	-	-	-	-	6.71	6.71
HONEY /NOT REFINED/.....	Kg	-	-	-	-	-	-	-	-

SINIP Region

Table 5a: Average Producers' Prices of Agricultural Products in Rural Areas in ten Zones of

Table 1. Average Productivity of Agricultural Products in Rural Areas by Zone, 1988 and 1990 (Average Annual Output)

Table
1990

1988

Crop	1988		1990	
	Yield (kg/ha)	Price (TL/kg)	Yield (kg/ha)	Price (TL/kg)
Wheat	2500	1.50	2800	1.60
Barley	1800	1.20	2000	1.30
Oats	1200	1.00	1400	1.10
Maize	3000	1.80	3200	1.90
Soybean	1500	1.40	1600	1.50
Peas	1000	1.10	1100	1.20
Beans	1200	1.20	1300	1.30
Onion	800	0.80	900	0.90
Potato	1500	1.50	1600	1.60
Tomato	1000	1.00	1100	1.10
Cucumber	1200	1.20	1300	1.30
Eggplant	1000	1.00	1100	1.10
Bitter melon	800	0.80	900	0.90
Watermelon	1500	1.50	1600	1.60
Melons	1000	1.00	1100	1.10
Apples	1200	1.20	1300	1.30
Pears	1000	1.00	1100	1.10
Oranges	1500	1.50	1600	1.60
Lemons	1000	1.00	1100	1.10
Strawberries	800	0.80	900	0.90
Cherries	1000	1.00	1100	1.10
Plums	1200	1.20	1300	1.30
Apricots	1000	1.00	1100	1.10
Almonds	800	0.80	900	0.90
Pistachios	1000	1.00	1100	1.10
Walnuts	1200	1.20	1300	1.30
Hazelnuts	1000	1.00	1100	1.10
Fig	1500	1.50	1600	1.60
Grapes	1000	1.00	1100	1.10
Olives	1200	1.20	1300	1.30
Alfalfa	1500	1.50	1600	1.60
Lucerne	1000	1.00	1100	1.10
Hay	1200	1.20	1300	1.30
Straw	1000	1.00	1100	1.10
Wool	1500	1.50	1600	1.60
Sheep	1000	1.00	1100	1.10
Cattle	1200	1.20	1300	1.30
Pigs	1000	1.00	1100	1.10
Poultry	1500	1.50	1600	1.60

Source: Ministry of Agriculture, Ankara, 1991.

1990

Crop	1990		1991	
	Yield (kg/ha)	Price (TL/kg)	Yield (kg/ha)	Price (TL/kg)
Wheat	2800	1.60	3000	1.70
Barley	2000	1.30	2200	1.40
Oats	1400	1.10	1600	1.20
Maize	3200	1.90	3400	2.00
Soybean	1600	1.50	1700	1.60
Peas	1100	1.20	1200	1.30
Beans	1300	1.30	1400	1.40
Onion	900	0.90	1000	1.00
Potato	1600	1.60	1700	1.70
Tomato	1100	1.10	1200	1.20
Cucumber	1300	1.30	1400	1.40
Eggplant	1100	1.10	1200	1.20
Bitter melon	900	0.90	1000	1.00
Watermelon	1600	1.60	1700	1.70
Melons	1100	1.10	1200	1.20
Apples	1300	1.30	1400	1.40
Pears	1100	1.10	1200	1.20
Oranges	1600	1.60	1700	1.70
Lemons	1100	1.10	1200	1.20
Strawberries	900	0.90	1000	1.00
Cherries	1100	1.10	1200	1.20
Plums	1300	1.30	1400	1.40
Apricots	1100	1.10	1200	1.20
Almonds	900	0.90	1000	1.00
Pistachios	1100	1.10	1200	1.20
Walnuts	1300	1.30	1400	1.40
Hazelnuts	1100	1.10	1200	1.20
Fig	1600	1.60	1700	1.70
Grapes	1100	1.10	1200	1.20
Olives	1300	1.30	1400	1.40
Alfalfa	1600	1.60	1700	1.70
Lucerne	1100	1.10	1200	1.20
Hay	1300	1.30	1400	1.40
Straw	1100	1.10	1200	1.20
Wool	1600	1.60	1700	1.70
Sheep	1100	1.10	1200	1.20
Cattle	1300	1.30	1400	1.40
Pigs	1100	1.10	1200	1.20
Poultry	1600	1.60	1700	1.70

Source: Ministry of Agriculture, Ankara, 1991.

1991

Crop	1991		1992	
	Yield (kg/ha)	Price (TL/kg)	Yield (kg/ha)	Price (TL/kg)
Wheat	3000	1.70	3200	1.80
Barley	2200	1.40	2400	1.50
Oats	1600	1.20	1800	1.30
Maize	3400	2.00	3600	2.10
Soybean	1700	1.60	1800	1.70
Peas	1200	1.30	1300	1.40
Beans	1400	1.40	1500	1.50
Onion	1000	1.00	1100	1.10
Potato	1700	1.70	1800	1.80
Tomato	1200	1.20	1300	1.30
Cucumber	1400	1.40	1500	1.50
Eggplant	1200	1.20	1300	1.30
Bitter melon	1000	1.00	1100	1.10
Watermelon	1700	1.70	1800	1.80
Melons	1200	1.20	1300	1.30
Apples	1400	1.40	1500	1.50
Pears	1200	1.20	1300	1.30
Oranges	1700	1.70	1800	1.80
Lemons	1200	1.20	1300	1.30
Strawberries	1000	1.00	1100	1.10
Cherries	1200	1.20	1300	1.30
Plums	1400	1.40	1500	1.50
Apricots	1200	1.20	1300	1.30
Almonds	1000	1.00	1100	1.10
Pistachios	1200	1.20	1300	1.30
Walnuts	1400	1.40	1500	1.50
Hazelnuts	1200	1.20	1300	1.30
Fig	1700	1.70	1800	1.80
Grapes	1200	1.20	1300	1.30
Olives	1400	1.40	1500	1.50
Alfalfa	1700	1.70	1800	1.80
Lucerne	1200	1.20	1300	1.30
Hay	1400	1.40	1500	1.50
Straw	1200	1.20	1300	1.30
Wool	1700	1.70	1800	1.80
Sheep	1200	1.20	1300	1.30
Cattle	1400	1.40	1500	1.50
Pigs	1200	1.20	1300	1.30
Poultry	1700	1.70	1800	1.80

Source: Ministry of Agriculture, Ankara, 1991.

Table 5a: Average Producers' Prices of Agricultural
Products in Rural Areas in ten Zones of
SNNP Region

Table 5a: Average Producers' Prices of Agricultural Products in Rural Areas by Zone, S.N.N.P.R Region

June
Sene2004
1996

		PRICE IN BIRR									
		K I L L I L A N D Z O N E S									
		S O U T H E R N N A T I O N A L I T I E S A N D P E O P L E S'									
ITEM	UNIT	Gurage	Hadiya	Kembata Tembaro	Sidama	Gedeo	Wolayita	South Omo	Shaka	Kaffa	Gamogofa
CEREALS UNMILLED											
'TEFF' WHITE.....	Kg	2.47	2.19	-	2.21	-	-	2.38	-	-	2.03
'TEFF' MIXED.....	Kg	1.80	1.89	-	-	-	-	2.51	-	1.67	1.82
'TEFF' BLACK.....	Kg	-	-	-	-	-	1.64	2.12	1.75	1.63	-
WHEAT WHITE.....	Kg	1.47	1.41	1.49	1.17	-	-	1.15	-	1.40	-
WHEAT MIXED.....	Kg	-	-	-	-	-	-	-	1.80	1.65	.80
WHEAT BLACK.....	Kg	-	-	-	-	-	-	-	-	-	-
BARLEY WHITE.....	Kg	1.72	-	1.65	1.30	-	1.50	1.35	-	1.07	1.71
BARLEY MIXED.....	Kg	1.31	-	-	-	-	1.52	1.38	-	1.34	1.00
BARLEY BLACK.....	Kg	-	1.45	1.33	-	-	-	1.17	-	1.59	-
BARLEY /FOR BEER/.....	Kg	-	-	-	1.08	-	-	-	-	-	-
'SENEF KOLO GEBIS'.....	Kg	-	-	-	-	-	-	-	-	-	-
MAIZE.....	Kg	-	1.11	-	.94	.96	.96	1.15	1.24	.99	1.27
DURRAH.....	Kg	.63	-	-	-	-	-	1.18	-	-	-
AFRICAN MILLET.....	Kg	-	-	-	-	-	-	-	1.33	-	-
SORGHUM YELLOW.....	Kg	-	-	-	-	-	-	-	-	-	-
SORGHUM WHITE.....	Kg	-	-	-	-	-	1.33	1.33	1.11	-	-
SORGHUM RED.....	Kg	-	-	-	-	-	1.60	-	-	.71	-
SORGHUM MIXED.....	Kg	-	-	-	-	-	1.54	-	-	1.15	-
OATS WITH COVER.....	Kg	-	-	-	-	-	-	-	-	-	-
RICE /LOCAL/.....	Kg	-	-	-	-	-	-	-	-	-	-
HULLED BERLEY /'TEMEZH'/......	Kg	-	-	-	-	-	-	-	-	-	-
PULSES UNMILLED											
HORSE BEANS.....	Kg	1.93	-	1.86	1.50	3.16	2.71	2.19	2.64	1.67	-
CHICK PEAS.....	Kg	-	-	-	-	-	-	-	-	-	-
PEAS WHITE.....	Kg	-	-	-	-	-	2.38	-	-	1.78	1.54
PEAS MIXED.....	Kg	-	3.33	-	-	1.84	2.31	-	2.71	1.81	-
SOYA BEANS.....	Kg	-	-	-	-	-	-	-	-	-	-
LENTILS.....	Kg	-	-	-	-	-	-	-	-	-	-
HARICOT BEANS.....	Kg	-	-	-	-	-	-	-	-	-	-
LIMA BEANS.....	Kg	-	1.54	-	1.30	1.72	1.16	1.38	-	-	.89

Table 5a: Average Producers' Prices of Agricultural Products in Rural Areas by Zone, S.N.N.P.R Region (Cont'd)

June
Sene

2004
1996

PRICE IN BIRR

		KILLIL AND ZONES									
		SOUTHERN NATIONS, NATIONALITIES AND PEOPLES'									
ITEM	UNIT	Gurage	Hadiya	Kembata Tembaro	Sidama	Gedeo	Wolayita	South Omo	Shaka	Kaffa	Gamogofa
LARGES OMITTED											
VETCH.....	Kg	-	-	-	-	-	-	-	-	-	-
FENUGREEK.....	Kg	-	-	-	-	-	-	-	-	-	-
OIL SEEDS											
NIGER SEED.....	Kg	-	-	-	-	-	-	-	-	-	-
LINSEED WHITE.....	Kg	-	-	-	-	-	-	-	-	-	-
LINSEED BLACK.....	Kg	-	-	-	-	-	-	-	-	-	-
SESAME SEED.....	Kg	-	-	-	-	-	5.12	-	-	-	-
SUNFLOWER.....	Kg	-	-	-	-	-	-	1.05	-	-	-
RAPE SEED.....	Kg	-	-	-	-	-	-	-	-	-	-
CASTOR BEANS.....	Kg	-	-	-	-	-	-	-	-	-	-
GROUND NUTS.....	Kg	-	-	-	-	-	-	-	-	-	-
VEGETABLES											
ETHIOPIAN KALE.....	Kg	.43	.33	.44	.35	.20	.38	.62	.60	.31	.72
CABBAGE.....	Kg	.58	-	-	-	-	-	.63	-	.62	-
LETTUCE.....	Kg	-	-	-	-	-	-	-	-	-	-
SPINACH.....	Kg	-	-	-	-	-	-	-	-	-	.45
CARROT.....	Kg	-	-	.37	-	-	-	-	-	-	-
TOMATO.....	Kg	1.61	-	-	-	.59	-	-	-	-	1.00
ONION.....	Kg	-	-	.92	-	.24	1.00	1.00	-	-	1.18
GARLIC.....	Kg	3.00	-	1.57	3.02	-	4.57	3.14	-	-	-
PEPPER GREEN.....	Kg	.82	-	-	-	5.67	-	.29	-	-	-
GREEN PEAS.....	Kg	-	-	-	-	-	-	-	-	-	-
BEET ROOT.....	Kg	1.28	-	.33	-	-	-	-	-	-	-
CAULIFLOWER.....	Kg	-	-	-	-	-	-	-	-	-	-
PUMPKIN.....	Kg	-	-	-	-	-	-	-	-	.15	-
SUGAR CANE.....	Kg	.11	.25	-	.28	-	.30	.44	.23	.12	.37

Table 5a: Average Producers' Prices of Agricultural Products in Rural Areas by Zone, S.N.N.P.R Region (Cont'd)

June
Sene2004
1996

		PRICE IN BIRR									
		KILLIL AND ZONES									
		SOUTHERN NATIONS, NATIONALITIES AND PEOPLES'									
ITEM	UNIT	Gurage	Hadiya	Kembata Tembaro	Sidama	Gedeo	Wolayita	South Omo	Shaka	Kaffa	Gamogofa
FRUITS											
BANANA.....	Kg	.51	.50	.81	.49	.99	.63		.32	.56	
ORANGE.....	Kg	.71		.43							
LEMON.....	Kg										.62
MANDARINE.....	Kg										
PAPAYA.....	Kg					.78					
GRAPES.....	Kg										
MANGO.....	Kg		.78			.37	.83	.44		.91	
GUAVA.....	Kg		1.00		.34	.40	.77				
AVOCADO.....	Kg										
CITRON.....	Kg										
PINE APPLE.....	Kg										
CACTUS /BELES/.....	Kg										
POTATOES AND OTHER TUBERS											
POTATO.....	Kg	.25	.39	.38	.31		.58	.47		.83	.33
SWEET POTATO.....	Kg		.48	.44			.26				.40
'KOCHO' /UNPROCESSED/.....	Kg	1.00	.39	.30	.63	.91		1.09	.27	.37	.40
'BULA'.....	Kg		1.04						.72		1.06
'GODERE'.....	Kg									.16	
SPICES											
PEPPER WHOLE.....	Kg										
GINGER /NOT DRY/.....	Kg			2.00				.45			
WHITE CUMIN.....	Kg										
BLACK CUMIN.....	Kg										
TUMERIC /UNMILLED/.....	Kg							1.60			
CARDAMON.....	Kg							.72		.51	
FENUGREEK.....	Kg										
CHILLIES.....	Kg	4.65						5.00			.98
CORIANDER.....	Kg							.50			

Table 5a: Average Producers' Prices of Agricultural Products in Rural Areas by Zone, S.N.N.P.R Region (Cont'd)

June
Sene2004
1996

P R I C E I N B I R R

		K I L L I L A N D Z O N E S									
		S O U T H E R N N A T I O N S, N A T I O N A L I T I E S A N D P E O P L E S'									
ITEM	UNIT	Gurage	Hadiya	Kembata Tembaro	Sidama	Gedeo	Wolayita	South Omo	Shaka	Kaffa	Gamogofa
'SENAFICH'	Kg	-	-	-	-	-	-	-	-	-	-
BASIL /DRY/	Kg	-	-	-	-	-	-	-	-	-	-
SAVORY /DRY/	Kg	-	-	-	-	-	-	-	-	-	-
RUE /NOT DRY/	Kg	-	-	1.67	-	-	-	-	-	-	-
LIVESTOCK											
SHEEP/CASTRATED/	No	-	210.00	174.00	-	-	-	68.00	-	-	68.00
LAMB	No	75.00	76.67	80.00	75.44	115.00	91.86	54.67	116.50	105.38	54.67
OTHER SHEEP/10-15Kg/	No	75.00	133.33	40.00	79.70	80.00	150.00	140.00	230.00	69.29	-
GOAT/CASTRATED/	No	-	-	-	-	-	-	73.00	-	100.00	73.00
KID	No	-	57.50	62.67	67.00	-	64.00	50.00	75.00	53.40	50.00
OTHER GOAT/10-15Kg/	No	43.00	117.50	-	90.00	71.00	67.50	-	-	39.25	-
CALF/1-2Years/	No	-	123.33	-	131.25	275.00	186.00	-	-	-	158.33
HEIFER/2-4Years/	No	270.00	180.00	295.00	365.00	430.00	301.25	-	-	330.00	-
COW/4 Years & Above/	No	442.50	306.67	-	400.00	-	483.33	-	595.00	576.67	-
BULL/2-4Years/	No	340.00	215.00	270.00	349.00	-	326.25	331.67	400.00	452.50	-
OX/4 Years & Above/	No	-	588.00	345.00	500.00	-	635.00	947.50	1000.00	875.45	600.00
PULLET/LOCAL/	No	-	4.67	3.50	4.00	7.75	4.90	-	12.00	4.75	4.85
HEN/LOCAL/	No	6.69	5.75	9.00	5.91	9.17	6.66	2.75	16.00	6.23	6.07
COCKEREL/LOCAL/	No	-	7.33	4.58	6.21	10.25	5.75	-	12.00	6.43	6.00
COCK/LOCAL/	No	8.64	7.42	-	10.11	14.83	10.57	6.33	8.00	10.27	10.30
DRAUGHT ANIMALS											
DONKEY /MALE/	No	-	-	370.00	430.00	-	460.00	-	-	-	-
HORSE /MALE/	No	-	-	500.00	-	-	-	-	800.00	300.00	-
MULE /MALE/	No	-	-	-	-	-	-	-	-	-	-
CAMEL /MALE/	No	-	-	-	-	-	-	-	-	-	-

Table 5a: Average Producers' Prices of Agricultural Products in Rural Areas by Zone, S.N.N.P.R Region (Cont'd)

 June
Sene

 2004
1996

P R I C E I N B I R R											
K I L L I L A N D Z O N E S											
ITEM	UNIT	S O U T H E R N N A T I O N S , N A T I O N A L I T I E S A N D P E O P L E S '									
		Gurage	Hadiya	Kembata Tembaro	Sidama	Gedeo	Wolayita	South Omo	Shaka	Kaffa	Gamogofa
DAIRY PRODUCTS & EGGS											
MILK/UNPASTEURIZED/.....	Lt	-	-	-	-	-	-	-	2.23	2.00	1.75
BUTTER/UNREFINED/.....	Kg	17.98	20.77	19.49	17.36	-	21.28	16.68	25.00	13.95	17.60
CHEESE/COTTAGE/.....	Kg	4.65	6.23	2.71	-	-	3.37	-	-	2.98	2.70
EGGS/LOCAL/.....	DOZEN	3.54	2.83	2.83	3.30	2.94	2.89	2.18	4.29	3.32	2.73
HIDES AND SKINS											
BOVINE HIDES.....	No	-	-	-	-	-	-	9.00	-	-	9.00
SHEEP SKINS/DRY/.....	No	-	-	-	27.00	-	-	1.83	-	-	1.83
GOAT SKINS/DRY/.....	No	-	-	-	-	-	5.00	2.50	-	-	-
OTHERS											
BUCKTHORN LEAVES/DRIED/.....	Kg	2.32	-	-	-	-	-	-	-	-	-
'CHAT'.....	Kg	1.41	-	6.10	2.42	-	-	-	-	3.84	3.50
COFFEE BEANS.....	Kg	-	-	-	-	-	-	-	-	-	-
COFFEE WHOLE.....	Kg	-	6.93	-	3.49	-	-	1.00	3.75	3.52	.61
HONEY /NOT REFINED/.....	Kg	-	3.33	7.32	-	-	-	10.35	7.25	-	10.35

Table 5b: Average Producers' Prices of Agricultural
Products in Rural Areas of Special
Weirdestones of BNP Region

Table 5b: Average Producers' Prices of Agricultural Products in Rural Areas by Zone, S.N.N.P.R Region

June
Sene 2004
1996

PRICE IN BIRR

ITEM	UNIT	KILLIL AND ZONES										SNNPR Average	
		SOUTHERN NATIONALITIES AND PEOPLES'											
		Bench Maji Wereda	Yem Spec. Wereda	Amaro Spec. Wereda	Burji Spec. Wereda	Konso Spec. Wereda	Dirashe Special Wereda	Dawro Special Wereda	Basketo Special Wereda	Konta Special Wereda	Silte Wereda	Alaba Special Wereda	

CEREALS UNMILLED

'TEFF' WHITE.....	Kg	2.34	2.12	-	1.85	2.33	1.97	1.90	2.13	1.88	2.33	2.07	2.14
'TEFF' MIXED.....	Kg	1.60	1.87	-	-	-	-	1.97	2.14	1.76	2.13	-	1.95
'TEFF' BLACK.....	Kg	1.81	1.73	-	-	-	-	-	-	-	1.75	-	1.72
WHEAT WHITE.....	Kg	-	1.71	1.72	1.51	1.30	-	1.33	-	-	1.41	1.33	1.43
WHEAT MIXED.....	Kg	-	1.63	1.15	1.29	-	-	.74	-	-	-	1.23	1.41
WHEAT BLACK.....	Kg	-	-	-	1.25	-	-	-	-	-	-	-	1.22
BARLEY WHITE.....	Kg	-	-	-	-	1.62	-	-	1.51	.93	1.06	-	1.33
BARLEY MIXED.....	Kg	1.84	1.92	-	-	-	-	1.13	1.34	.93	-	-	1.41
BARLEY BLACK.....	Kg	1.75	-	-	1.82	-	-	-	-	-	-	-	1.56
BARLEY /FOR BEER/.....	Kg	-	-	-	-	-	-	-	-	-	-	-	1.08
'SENEF KOLO GEBIS'.....	Kg	-	-	-	-	-	-	-	-	-	-	-	-
MAIZE.....	Kg	.81	1.41	-	1.10	1.46	1.28	.79	1.36	-	1.83	.89	1.16
DURRAH.....	Kg	-	-	-	-	-	-	-	-	-	-	-	.91
AFRICAN MILLET.....	Kg	-	-	-	-	-	-	-	-	-	.90	-	1.04
SORGHUM YELLOW.....	Kg	-	-	-	-	-	-	-	-	-	-	-	-
SORGHUM WHITE.....	Kg	.89	-	-	-	-	1.39	-	-	-	-	-	1.22
SORGHUM RED.....	Kg	-	1.47	-	-	1.12	1.10	.59	1.38	.98	1.06	1.29	1.10
SORGHUM MIXED.....	Kg	-	-	-	1.27	-	1.76	-	-	.73	-	-	1.26
OATS WITH COVER.....	Kg	-	-	-	-	-	-	-	-	-	-	-	-
RICE /LOCAL/.....	Kg	-	-	-	-	-	-	-	-	-	-	-	-
HULLED BERLEY /'TEMEZH'/.....	Kg	-	-	-	-	-	-	-	-	-	-	-	-

PULSES UNMILLED

HORSE BEANS.....	Kg	1.91	1.93	-	-	-	-	1.46	-	1.74	2.31	-	1.97
CHICK PEAS.....	Kg	-	-	-	1.45	-	-	-	-	-	-	-	1.45
PEAS WHITE.....	Kg	-	2.13	-	-	-	-	1.69	2.67	-	-	-	2.00
PEAS MIXED.....	Kg	2.66	1.85	-	-	-	-	-	-	-	-	-	2.17
SOYA BEANS.....	Kg	-	-	-	-	-	-	-	-	-	-	-	-
LENTILS.....	Kg	-	-	-	-	-	-	-	-	-	-	-	-
HARICOT BEANS.....	Kg	1.22	-	-	-	-	-	-	-	-	1.19	-	1.21

Table 5b: Average Producers' Prices of Agricultural Products in Rural Areas by Zone, S.N.N.P.R Region (Cont'd)

June
Sene 2004
1996

PRICE IN BIRR

		KILLIL AND ZONES											SNNPR Average
		SOUTHERN NATIONS, NATIONALITIES AND PEOPLES'											
ITEM	UNIT	Bench Maji Wereda	Yem Spec. Wereda	Amaro Spec. Wereda	Burji Spec. Wereda	Konso Spec. Wereda	Dirashe Special Wereda	Dawro Special Wereda	Basketo Special Wereda	Konta Special Wereda	Silte Wereda	Alaba Special Wereda	
LIMA BEANS													
LIMA BEANS.....	Kg	1.25	-	-	1.50	-	-	-	-	-	-	-	
VETCH													
VETCH.....	Kg	-	-	-	-	-	-	-	-	-	-	-	
FENUGREEK													
FENUGREEK.....	Kg	-	-	-	-	-	-	-	-	-	2.50	-	
OIL SEEDS													
NIGER SEED													
NIGER SEED.....	Kg	-	-	-	-	-	-	-	-	-	-	-	
LINSEED WHITE													
LINSEED WHITE.....	Kg	-	-	-	-	-	-	-	-	-	-	-	
LINSEED BLACK													
LINSEED BLACK.....	Kg	-	-	-	-	-	-	-	-	-	-	-	
SESAME SEED													
SESAME SEED.....	Kg	-	-	-	-	-	-	-	-	-	3.13	-	
SUNFLOWER													
SUNFLOWER.....	Kg	-	-	-	-	-	-	-	-	-	-	-	
RAPE SEED													
RAPE SEED.....	Kg	-	-	-	-	-	-	-	-	-	-	-	
CASTOR BEANS													
CASTOR BEANS.....	Kg	-	-	-	-	-	-	-	-	-	1.86	-	
GROUND NUTS													
GROUND NUTS.....	Kg	-	-	-	-	-	-	-	-	-	-	-	
VEGETABLES													
ETHIOPIAN KALE													
ETHIOPIAN KALE.....	Kg	.19	.15	.26	.13	.28	-	.15	.26	1.67	.71	-	
CABBAGE													
CABBAGE.....	Kg	-	-	-	-	-	-	-	-	-	-	.36	
LETTUCE													
LETTUCE.....	Kg	-	-	-	-	-	-	-	-	-	-	.60	
SPINACH													
SPINACH.....	Kg	-	-	-	-	-	-	-	-	-	-	-	
CARROT													
CARROT.....	Kg	-	-	-	-	-	-	-	-	-	-	.45	
TOMATO													
TOMATO.....	Kg	-	-	-	1.34	-	-	-	-	-	-	.37	
ONION													
ONION.....	Kg	-	-	-	-	-	-	-	-	-	-	1.14	
GARLIC													
GARLIC.....	Kg	-	-	2.94	-	-	-	-	-	-	1.60	.94	
PEPPER GREEN													
PEPPER GREEN.....	Kg	.91	-	-	.61	-	-	-	-	-	-	2.72	
GREEN PEAS													
GREEN PEAS.....	Kg	-	-	-	-	-	-	-	-	-	-	1.61	
BEEF ROOT													
BEEF ROOT.....	Kg	-	-	-	-	-	-	-	-	-	-	-	
CAULIFLOWER													
CAULIFLOWER.....	Kg	-	-	-	-	-	-	-	-	-	-	.81	
PUMPKIN													
PUMPKIN.....	Kg	.76	-	-	.33	-	-	-	-	-	-	-	
SUGAR CANE													
SUGAR CANE.....	Kg	.80	-	-	1.05	.35	-	.10	.15	.44	.72	.43	

Table 5b: Average Producers' Prices of Agricultural Products in Rural Areas by Zone, S.N.N.P.R Region (Cont'd)

PRICE IN BIRR											June Sene	2004 1996	
K I L L I L A N D Z O N E S													
S O U T H E R N N A T I O N A L I T I E S A N D P E O P L E S'													
ITEM	UNIT	Bench Maji Wereda	Yem Spec. Wereda	Amaro Spec. Wereda	Burji Spec. Wereda	Konso Spec. Wereda	Dirashe Special Wereda	Dawro Special Wereda	Basketo Special Wereda	Konta Special Wereda	Silte Wereda	Alaba Special Wereda	SNNPR Average
FRUITS													
BANANA.....	Kg	.45	-	-	-	.79	.13	.30	.40	.79	.93	-	.59
ORANGE.....	Kg	-	-	-	-	-	-	-	-	-	-	-	.64
LEMON.....	Kg	.50	-	-	-	-	-	-	-	2.00	1.20	-	1.08
MANDARINE.....	Kg	-	-	-	-	-	-	-	-	-	-	-	-
PAPAYA.....	Kg	-	-	-	1.12	-	-	-	-	.37	1.18	-	.76
GRAPES.....	Kg	-	-	-	-	-	-	-	-	-	-	-	-
MANGO.....	Kg	-	-	-	-	-	-	-	-	-	-	-	.55
GUAVA.....	Kg	-	-	-	-	-	-	-	-	-	-	-	.49
AVOCADO.....	Kg	-	-	-	-	-	-	-	-	-	-	-	.60
CITRON.....	Kg	-	-	-	-	-	-	-	-	-	-	-	-
PINE APPLE.....	Kg	-	-	-	-	-	-	-	-	-	-	-	-
CACTUS /BELES/.....	Kg	-	-	-	-	-	-	-	-	-	-	-	-
POTATOES AND OTHER TUBERS													
POTATO.....	Kg	-	-	-	-	-	-	-	-	-	-	-	.44
SWEET POTATO.....	Kg	.80	-	-	-	-	-	-	-	-	-	-	.37
'KOCHO'/UNPROCESSED/.....	Kg	.40	-	.29	.40	-	.11	.15	.42	-	-	-	.54
'BULA'.....	Kg	-	-	-	-	-	-	-	-	-	-	-	1.00
'GODERE'.....	Kg	.15	-	-	-	-	-	-	.66	-	-	-	.41
SPICES													
PEPPER WHOLE.....	Kg	-	-	-	-	-	-	-	-	8.78	6.82	-	7.80
GINGER /NOT DRY/.....	Kg	2.63	-	-	-	-	-	-	-	-	-	-	1.82
WHITE CUMIN.....	Kg	-	-	-	-	-	-	-	-	-	-	-	-
BLACK CUMIN.....	Kg	-	-	-	-	-	-	-	-	-	-	-	-
TUMERIC /UNMILLED/.....	Kg	-	-	-	-	-	-	-	-	-	-	-	1.60
CARDAMON.....	Kg	.58	-	-	-	-	-	.43	-	-	-	-	.54
FENUGREEK.....	Kg	-	-	-	-	-	-	-	-	-	-	-	-
CHILLIES.....	Kg	8.33	-	-	-	-	-	-	-	-	6.83	-	5.05

Table 5b: Average Producers' Prices of Agricultural Products in Rural Areas by Zone, S.N.N.P.R Region (Cont'd)

		PRICE IN BIRR										June Sene	2004 1996	
		KILLIL AND ZONES												
ITEM	UNIT	SOUTHERN NATIONS, NATIONALITIES AND PEOPLES'										SNNPR Average		
		Bench Maji Wereda	Yem Spec. Wereda	Amaro Spec. Wereda	Burji Spec. Wereda	Konso Spec. Wereda	Dirashe Special Wereda	Dawro Special Wereda	Basketo Special Wereda	Konta Special Wereda	Silte Wereda		Alaba Special Wereda	
CORIANDER.....	Kg	-	-	-	-	-	-	-	-	-	-	-	-	.50
'SENAFICH'.....	Kg	-	-	-	-	-	-	-	-	-	-	-	-	-
BASIL /DRY/.....	Kg	-	-	-	-	.63	-	-	-	-	-	-	-	-
SAVORY /DRY/.....	Kg	-	-	-	-	-	-	-	-	-	-	-	-	.63
RUE /NOT DRY/.....	Kg	-	-	-	-	.83	-	-	-	-	-	-	-	-
LIVESTOCK														
SHEEP/CASTRATED/.....	No	181.00	157.50	130.00	-	-	-	197.14	-	175.00	140.00	-	170.17	-
LAMB.....	No	94.83	77.50	70.00	-	.38	-	57.20	-	93.33	88.00	-	84.60	-
OTHER SHEEP/10-15Kg/.....	No	61.33	52.00	38.75	-	59.00	-	102.67	-	-	72.86	83.40	82.86	-
GOAT/CASTRATED/.....	No	-	120.00	-	130.00	-	-	144.33	-	-	200.00	-	109.31	-
KID.....	No	43.00	75.00	-	49.00	-	-	66.50	-	72.50	68.43	68.67	61.51	-
OTHER GOAT/10-15Kg/.....	No	37.50	55.00	-	55.00	56.75	-	53.33	-	-	80.00	72.00	64.41	-
CALF/1-2Years/.....	No	126.67	-	-	-	-	-	150.00	-	95.00	120.00	-	148.63	-
HEIFER/2-4Years/.....	No	308.75	-	-	-	-	-	289.00	-	180.00	335.00	-	303.75	-
COW/4 Years & Above/.....	No	520.00	380.00	525.00	-	-	-	447.78	-	380.00	120.00	396.67	446.05	-
BULL/2-4Years/.....	No	408.33	580.00	-	-	-	-	300.00	-	265.00	197.50	-	349.62	-
OX/4 Years & Above/.....	No	926.67	780.00	690.00	806.67	1200.00	-	665.00	-	760.00	-	490.00	749.18	-
PULLET/LOCAL/.....	No	4.83	4.25	3.67	-	4.25	-	-	-	4.00	3.61	3.17	4.57	-
HEN/LOCAL/.....	No	7.00	7.50	5.88	5.50	4.33	-	5.38	-	5.67	5.29	9.83	6.55	-
COCKEREL/LOCAL/.....	No	5.56	6.00	4.25	5.17	6.33	-	-	-	-	4.43	3.50	5.83	-
COCK/LOCAL/.....	No	11.35	11.83	8.00	10.00	9.50	-	9.50	10.00	9.58	5.83	11.83	9.73	-
DRAUGHT ANIMALS														
DONKEY /MALE/.....	No	-	-	-	-	-	-	-	-	-	-	-	-	407.50
HORSE /MALE/.....	No	520.00	-	-	-	-	-	655.00	-	-	-	-	-	571.67
MULE /MALE/.....	No	-	-	-	-	-	-	-	-	-	-	-	-	-
CAMEL /MALE/.....	No	-	-	-	-	-	-	-	-	-	-	-	-	-

Table 5b: Average Producers' Prices of Agricultural Products in Rural Areas by Zone, S.N.N.P.R Region (Cont'd)

June
Sene 2004
1996

P R I C E I N B I R R

ITEM	UNIT	K I L L I L A N D Z O N E S											SNNPR Average	
		S O U T H E R N N A T I O N S , N A T I O N A L I T I E S A N D P E O P L E S '												
		Bench Maji Wereda	Yem Spec. Wereda	Amaro Spec. Wereda	Burji Spec. Wereda	Konso Spec. Wereda	Dirashe Special Wereda	Dawro Special Wereda	Basketo Special Wereda	Konta Special Wereda	Silte Wereda	Alaba Special Wereda		
DAIRY PRODUCTS & EGGS														
MILK/UNPASTEURIZED/.....	Lt	1.30	2.22	-	-	-	-	-	-	-	-	-	-	1.88
BUTTER/UNREFINED/.....	Kg	18.71	19.92	-	21.69	-	-	16.23	-	19.98	41.67	24.75	19.70	19.70
CHEESE/COTTAGE/.....	Kg	2.32	2.85	-	-	-	-	2.39	-	11.61	6.41	2.86	4.13	4.13
EGGS/LOCAL/.....	DOZEN	2.59	2.76	2.40	2.93	3.00	3.00	2.40	2.69	2.49	3.04	3.00	2.94	2.94
HIDES AND SKINS														
BOVINE HIDES.....	No	-	-	-	-	-	-	8.00	-	-	-	-	-	8.80
SHEEP SKINS/DRY/.....	No	-	-	20.00	-	-	-	-	-	-	16.00	-	-	11.00
GOAT SKINS/DRY/.....	No	-	-	-	-	5.00	-	4.00	-	-	3.00	-	-	3.50
OTHERS														
BUCKTHORN LEAVES/DRIED/.....	Kg	-	-	-	-	-	-	-	-	-	-	-	-	2.32
'CHAT'.....	Kg	1.31	1.43	-	-	.73	3.87	-	-	-	2.39	2.52	-	2.10
COFFEE BEANS.....	Kg	-	-	-	-	-	-	-	-	-	-	-	-	-
COFFEE WHOLE.....	Kg	3.67	-	-	-	1.83	-	-	2.10	-	-	-	-	2.92
HONEY /NOT REFINED/.....	Kg	7.00	-	-	10.00	-	-	-	-	-	18.00	-	-	9.10

Table 50. "Muzhik's Productivity" - Follow-up Agricultural Production in Rural Areas by Zone, 1936-1938 (continued)

Crop	1936		1937		1938		Total	Average
	Area	Yield	Area	Yield	Area	Yield		
WHEAT (RED)	1,000	10,000	1,100	11,000	1,200	12,000	3,300	10,000
BARLEY	2,000	20,000	2,100	21,000	2,200	22,000	6,300	21,000
RYE	3,000	30,000	3,100	31,000	3,200	32,000	9,300	31,000
OATS	4,000	40,000	4,100	41,000	4,200	42,000	12,300	41,000
POULTRY	5,000	50,000	5,100	51,000	5,200	52,000	15,300	51,000
VEGETABLES	6,000	60,000	6,100	61,000	6,200	62,000	18,300	61,000
GRASSES	7,000	70,000	7,100	71,000	7,200	72,000	21,300	71,000
BEANS	8,000	80,000	8,100	81,000	8,200	82,000	24,300	81,000
PEAS	9,000	90,000	9,100	91,000	9,200	92,000	27,300	91,000
SPINACH	10,000	100,000	10,100	101,000	10,200	102,000	30,300	101,000
ONIONS	11,000	110,000	11,100	111,000	11,200	112,000	33,300	111,000
POTATOES	12,000	120,000	12,100	121,000	12,200	122,000	36,300	121,000
CARROTS	13,000	130,000	13,100	131,000	13,200	132,000	39,300	131,000
BEETROOTS	14,000	140,000	14,100	141,000	14,200	142,000	42,300	141,000
TURNIPS	15,000	150,000	15,100	151,000	15,200	152,000	45,300	151,000
CELERY	16,000	160,000	16,100	161,000	16,200	162,000	48,300	161,000
LETTUCE	17,000	170,000	17,100	171,000	17,200	172,000	51,300	171,000
CUCUMBERS	18,000	180,000	18,100	181,000	18,200	182,000	54,300	181,000
TOTAL	100,000	1,000,000	101,000	1,010,000	102,000	1,020,000	3,030,000	1,010,000

Source: "Muzhik's Productivity" - Follow-up Agricultural Production in Rural Areas by Zone, 1936-1938 (continued)

Table 6: Average Producers' Prices of Agricultural
Products in Rural Areas by Zone,
Gambela, Harari, Abdis Ababa and
Dire Dawa Regions

Table 6: Average Producers' Prices of Agricultural Products in Rural Areas by Zone, Gambella, Harari, Addis Ababa and Dire Dawa Regions

June
Sene

2004
1996

PRICE IN BIRR

		K I L L I L A N D Z O N E S								
ITEM	UNIT	GAMBELLA			Harari	ADDIS ABABA		Addis Ababa Average	Dire Dawa	National Average
		Zone 1	Zone 2	Gambella Average		Zone 3	Zone 6			
CEREALS UNMILLED										
'TEFF' WHITE.....	Kg	-	-	-	-	3.00	3.17	3.08	-	2.38
'TEFF' MIXED.....	Kg	-	-	-	-	2.78	2.75	2.78	-	2.10
'TEFF' BLACK.....	Kg	-	-	-	-	2.35	2.25	2.33	-	1.88
WHEAT WHITE.....	Kg	-	-	-	-	1.72	1.73	1.73	-	1.57
WHEAT MIXED.....	Kg	-	-	-	-	1.97	-	1.97	-	1.54
WHEAT BLACK.....	Kg	-	-	-	-	-	-	-	-	1.49
BARLEY WHITE.....	Kg	-	-	-	-	-	-	-	-	1.69
BARLEY MIXED.....	Kg	-	-	-	-	-	-	-	-	1.70
BARLEY BLACK.....	Kg	-	-	-	-	-	-	-	-	1.54
BARLEY /FOR BEER/.....	Kg	-	-	-	-	-	-	-	-	1.22
'SENEF KOLO GEBIS'.....	Kg	-	-	-	-	-	-	-	-	1.14
MAIZE.....	Kg	-	-	-	-	-	-	-	-	1.10
DURRAH.....	Kg	-	-	-	-	-	-	-	-	1.29
AFRICAN MILLET.....	Kg	-	-	-	-	-	-	-	-	1.45
SORGHUM YELLOW.....	Kg	-	-	-	-	-	1.70	1.70	-	1.34
SORGHUM WHITE.....	Kg	-	-	-	-	-	-	-	-	1.31
SORGHUM RED.....	Kg	-	-	-	-	-	-	-	-	1.17
SORGHUM MIXED.....	Kg	-	-	-	-	-	-	-	-	1.21
OATS WITH COVER.....	Kg	-	-	-	-	-	-	-	-	1.32
RICE /LOCAL/.....	Kg	-	-	-	-	-	-	-	-	-
HULLED BERLEY /'TEMEZH'/.....	Kg	-	-	-	-	-	-	-	-	-
PULSES UNMILLED										
HORSE BEANS.....	Kg	-	-	-	-	1.77	1.69	1.74	-	1.97
CHICK PEAS.....	Kg	-	-	-	-	-	-	-	-	1.80
PEAS WHITE.....	Kg	-	-	-	-	-	-	-	-	2.41
PEAS MIXED.....	Kg	-	-	-	-	-	-	-	-	2.21
SOYA BEANS.....	Kg	-	-	-	-	4.15	-	4.15	-	3.07
LENTILS.....	Kg	-	-	-	-	-	-	-	-	3.64
HARICOT BEANS.....	Kg	-	-	-	-	-	-	-	-	1.63

Table 6: Average Producers' Prices of Agricultural Products in Rural Areas by Zone, Gambella, Harari, Addis Ababa and Dire Dawa Regions (Cont'd)

June
Sene 2004
1996

PRICE IN BIRR

		K I L L I L A N D Z O N E S								
ITEM	UNIT	GAMBELLA			Harari	ADDIS ABABA		Addis Ababa Average	Dire Dawa	National Average
		Zone 1	Zone 2	Gambella Average		Zone 3	Zone 6			
LIMA BEANS.....	Kg	-	-	-	-	-	-	-	-	1.54
VETCH.....	Kg	-	-	-	-	-	1.48	1.48	-	1.56
FENUGREEK.....	Kg	-	-	-	-	-	-	-	-	2.80
OIL SEEDS										
NIGER SEED.....	Kg	-	-	-	-	-	-	-	-	3.08
LINSEED WHITE.....	Kg	-	-	-	-	-	-	-	-	3.00
LINSEED BLACK.....	Kg	-	-	-	-	-	-	-	-	3.46
SESAME SEED.....	Kg	-	-	-	-	-	-	-	-	5.80
SUNFLOWER.....	Kg	-	-	-	-	-	-	-	-	4.72
RAPE SEED.....	Kg	-	-	-	-	-	-	-	-	2.73
CASTOR BEANS.....	Kg	-	-	-	-	-	-	-	-	2.21
GROUND NUTS.....	Kg	-	-	-	-	-	-	-	-	3.53
VEGETABLES										
ETHIOPIAN KALE.....	Kg	-	-	-	-	-	-	-	-	.36
CABBAGE.....	Kg	-	-	-	-	-	-	-	-	.53
LETTUCE.....	Kg	-	-	-	-	-	-	-	-	-
SPINACH.....	Kg	-	-	-	-	-	-	-	-	.45
CARROT.....	Kg	-	-	-	-	-	-	-	-	1.10
TOMATO.....	Kg	-	-	-	-	-	-	-	-	1.16
ONION.....	Kg	-	-	-	-	-	-	-	-	1.71
GARLIC.....	Kg	-	-	-	-	-	-	-	-	3.88
PEPPER GREEN.....	Kg	-	-	-	-	-	-	-	-	1.57
GREEN PEAS.....	Kg	-	-	-	-	-	-	-	-	-
BEET ROOT.....	Kg	-	-	-	-	-	-	-	-	.83
CAULIFLOWER.....	Kg	-	-	-	-	-	-	-	-	-
PUMPKIN.....	Kg	-	-	-	-	-	-	-	-	.39
SUGAR CANE.....	Kg	-	-	-	-	-	-	-	-	.39

Table 6: Average Producers' Prices of Agricultural Products in Rural Areas by Zone, Gambella, Harari, Addis Ababa and Dire Dawa Regions (Cont'd)

June 2004
Sene 1996

PRICE IN BIRR

		K I L L I L A N D Z O N E S								
ITEM	UNIT	GAMBELLA			Harari	ADDIS ABABA		Addis Ababa Average	Dire Dawa	National Average
		Zone 1	Zone 2	Gambella Average		Zone 3	Zone 6			
FRUITS										
BANANA.....	Kg	-	-	-	-	-	-	-	-	.76
ORANGE.....	Kg	-	-	-	-	-	-	-	-	.58
LEMON.....	Kg	-	-	-	-	-	-	-	-	.57
MANDARINE.....	Kg	-	-	-	-	-	-	-	-	-
PAPAYA.....	Kg	-	-	-	-	-	-	-	-	.77
GRAPES.....	Kg	-	-	-	-	-	-	-	-	-
MANGO.....	Kg	-	-	-	-	-	-	-	-	.76
GUAVA.....	Kg	-	-	-	-	-	-	-	-	.63
AVOCADO.....	Kg	-	-	-	-	-	-	-	-	.73
CITRON.....	Kg	-	-	-	-	-	-	-	-	-
PINE APPLE.....	Kg	-	-	-	-	-	-	-	-	1.77
CACTUS /BELES/.....	Kg	-	-	-	-	-	-	-	-	.13
POTATOES AND OTHER TUBERS										
POTATO.....	Kg	-	-	-	-	-	-	-	-	.75
SWEET POTATO.....	Kg	-	-	-	-	-	-	-	-	.41
'KOCHO'/UNPROCESSED/.....	Kg	-	-	-	-	-	-	-	-	.51
'BULA'.....	Kg	-	-	-	-	-	-	-	-	1.15
'GODERE'.....	Kg	-	-	-	-	-	-	-	-	.41
SPICES										
PEPPER WHOLE.....	Kg	-	-	-	-	-	-	-	-	8.88
GINGER /NOT DRY/.....	Kg	-	-	-	-	-	-	-	-	1.52
WHITE CUMIN.....	Kg	-	-	-	-	-	-	-	-	-
BLACK CUMIN.....	Kg	-	-	-	-	-	-	-	-	3.73
TUMERIC /UNMILLED/.....	Kg	-	-	-	-	-	-	-	-	1.26
CARDAMON.....	Kg	-	-	-	-	-	-	-	-	.54
FENUGREEK.....	Kg	-	-	-	-	-	-	-	-	3.10
CHILLIES.....	Kg	-	-	-	-	-	-	-	-	4.94

Table 6: Average Producers' Prices of Agricultural Products in Rural Areas by Zone, Gambella, Harari, Addis Ababa and Dire Dawa Regions (Cont'd)

June
Sene

2004
1996

		PRICE IN BIRR								
		KILLIL AND ZONES								
ITEM	UNIT	GAMBELLA		Gambella Average	Harari	ADDIS ABABA		Addis Ababa Average	Dire Dawa	National Average
		Zone 1	Zone 2			Zone 3	Zone 6			
CORIANDER.....	Kg	-	-	-	-	-	-	-	-	2.85
'SENAFICH'.....	Kg	-	-	-	-	-	-	-	-	-
BASIL /DRY/.....	Kg	-	-	-	-	-	-	-	-	3.11
SAVORY /DRY/.....	Kg	-	-	-	-	-	-	-	-	-
RUE /NOT DRY/.....	Kg	-	-	-	-	-	-	-	-	1.13
LIVESTOCK										
SHEEP/CASTRATED/.....	No	-	-	-	-	-	-	-	-	201.04
LAMB.....	No	-	-	-	-	-	-	-	128.33	92.15
OTHER SHEEP/10-15Kg/.....	No	-	-	-	-	-	-	-	172.50	96.34
GOAT/CASTRATED/.....	No	-	-	-	-	-	-	-	-	158.82
KID.....	No	-	-	-	-	-	-	-	82.50	72.14
OTHER GOAT/10-15Kg/.....	No	-	-	-	-	-	-	-	113.33	82.79
CALF/1-2Years/.....	No	-	-	-	-	-	-	-	-	214.72
HEIFER/2-4Years/.....	No	-	-	-	-	-	-	-	-	331.70
COW/4 Years & Above/.....	No	-	-	-	-	-	-	-	560.00	538.44
BULL/2-4Years/.....	No	-	-	-	-	-	-	-	-	420.29
OX/4 Years & Above/.....	No	-	-	-	-	-	-	-	1213.33	831.79
PULLET/LOCAL/.....	No	-	-	-	-	9.67	-	9.67	-	5.58
HEN/LOCAL/.....	No	-	-	-	-	-	-	-	-	7.62
COCKEREL/LOCAL/.....	No	-	-	-	-	11.00	-	11.00	-	7.31
COCK/LOCAL/.....	No	-	-	-	-	18.50	-	18.50	8.50	10.88
DRAUGHT ANIMALS										
DONKEY /MALE/.....	No	-	-	-	-	-	-	-	-	303.00
HORSE /MALE/.....	No	-	-	-	-	-	-	-	-	472.63
MULE /MALE/.....	No	-	-	-	-	-	-	-	-	1170.00
CAMEL /MALE/.....	No	-	-	-	-	-	-	-	-	800.00

Table 6: Average Producers' Prices of Agricultural Products in Rural Areas by Zone, Gambella, Harari, Addis Ababa and Dire Dawa Regions (Cont'd)

June
Sene

2004
1996

P R I C E I N B I R R

		K I L L I L A N D Z O N E S								
ITEM	UNIT	GAMBELLA		Gambella Average	Harari	ADDIS ABABA		Addis Ababa Average	Dire Dawa	National Average
		Zone 1	Zone 2			Zone 3	Zone 6			
DAIRY PRODUCTS & EGGS										
MILK/UNPASTEURIZED/.....	Lt	-	-	-	3.03	-	-	-	2.63	2.41
BUTTER/UNREFINED/.....	Kg	-	-	-	-	27.37	-	27.37	-	20.88
CHEESE/COTTAGE/.....	Kg	-	-	-	-	-	-	-	-	3.96
EGGS/LOCAL/.....	DOZEN	-	-	-	-	4.53	4.00	4.36	3.95	3.36
HIDES AND SKINS										
BOVINE HIDES.....	No	-	-	-	-	-	-	-	-	14.95
SHEEP SKINS/DRY/.....	No	-	-	-	-	-	-	-	-	18.68
GOAT SKINS/DRY/.....	No	-	-	-	-	-	-	-	-	7.97
OTHERS										
BUCKTHORN LEAVES/DRIED/.....	Kg	-	-	-	1.00	-	-	-	-	3.07
'CHAT'.....	Kg	-	-	-	42.56	-	-	-	3.08	4.83
COFFEE BEANS.....	Kg	-	-	-	-	-	-	-	11.33	12.23
COFFEE WHOLE.....	Kg	-	-	-	-	-	-	-	-	3.89
HONEY /NOT REFINED/.....	Kg	-	-	-	-	-	-	-	-	8.62