

**FEDERAL DEMOCRATIC REPUBLIC OF ETHIOPIA
OFFICE OF POPULATION CENSUS COMMISSION
CENTRAL STATISTICAL AGENCY**

**THE 2007 POPULATION AND HOUSING CENSUS OF HARARI REGION
STATISTICAL SUMMARY REPORT**

NOVEMBER 2010

ADDIS ABABA

⑦

FEDERAL DEMOCRATIC REPUBLIC OF ETHIOPIA
OFFICE OF POPULATION CENSUS COMMISSION
CENTRAL STATISTICAL AGENCY

The 2007 Population and Housing Census of Ethiopia was conducted under the auspices of the Population Census Commission established by Proclamation No. 440/1997. The Commission was headed by the late Professor Dr. Yohannes Tadesse. The members of the commission were drawn from various sectors of the country including the House of Federation, National Chamber of Representatives, Ministry of Health, Office of the Census Commission, and various regional governments. The commission's mandate was to oversee the planning, implementation, processing, evaluation and dissemination of the census results. The Commission is pleased to present this statistical summary report of the census results.

THE 2007 POPULATION AND HOUSING CENSUS OF HARARI REGION
STATISTICAL SUMMARY REPORT

This report is one of the statistical reports prepared at national and regional levels. It provides socio-economic and demographic information generated from the census data. It is intended for all users including those who do not have access to the census data.

Before the commencement of the census, preparatory activities were also carried out. These activities included the design of the census questionnaire, the conduct of the Population and Housing Census, and the dissemination of the census results. During this process, the region was sub-divided into enumeration areas (EAs) and households, respectively. About 4-6 EAs were established in each sub-administrative area. In the exercise for each enumeration area, the census taker was required to visit all the households and collect the census data.

NOVEMBER 2010
ADDIS ABABA

7.0

FEDERAL DEMOCRATIC REPUBLIC OF ETHIOPIA
OFFICE OF POPULATION CENSUS COMMISSION
CENTRAL STATISTICAL AGENCY

THE 2007 POPULATION AND HOUSING CENSUS OF HARARI REGION
STATISTICAL SUMMARY REPORT

PREPARED AND PRINTED BY
CENTRAL STATISTICAL AGENCY
P.O.BOX 1143, ADDIS ABABA
Tel. 251 11 155 30 11

NOVEMBER 2010
ADDIS ABABA

FOREWORD

Up to date statistical data that reflect the socio-economic and demographic conditions of the residents of a country are useful for designing and preparation of development plans as well as for monitoring and evaluation of the impact of the implementation of the development plans. These statistical data include population size, age, sex, literacy and education, marital status, housing stocks and conditions ...etc. In order to fill the gap for these socio-economic and demographic data need, Ethiopia has conducted its third National Population and Housing Census in May and November 2007.

The 2007 Population and Housing Census of Ethiopia were conducted under the auspices of the Population Census Commission that was established by a Proclamation No. 449/1997. The Commission is chaired by the Deputy Prime Minister and the members of the commission were drawn from various relevant Ministries, Regional State representatives, House of Federation, National Electoral Board and the Central Statistical Agency, serving as the Office of the Census Commission (Secretariat). According to this proclamation the processing, evaluation and analyses of the data collected in this census as well as its dissemination are the major responsibilities of this office. Thus, the Office of the Population Census Commission is pleased to present the census summary report entitled **"The 2007 Population and Housing Census of Ethiopia: Summary Report of Harari Region"** for the users. It is an abridged summary result of the statistical report at Regional Level with brief descriptions of the results.

This summary report is intended to supplement the statistical reports prepared at national and regional levels and attempts to provide the socio-economic and demographic information generated by the 2007 Population and Housing Census to all users including those who do not have basic statistical knowledge.

Before the conduct of a census enumeration, numbers of preparatory activities were also carried-out. Among the major census preparatory activities, the conduct of the Population and Housing Census Map Work was one of the important tasks to be undertaken. During this census cartographic work urban and rural kebeles of the region were sub-divided into enumeration areas, each having 150-200 housing units and households, respectively. About 4-6 contiguous enumeration areas were made to form one supervision area. In this exercise for each enumeration and supervision area maps have been prepared.

During the census enumeration, each enumerator was given the map of an enumeration area along with other census documents and he/she was responsible to record all persons and households in that enumeration area without omission and duplication. One supervisor was also assigned to a supervision area and was responsible for ensuring the quality of the information collected in the area of his/her jurisdiction. Unlike the previous censuses, in this census enumerators were primary school teachers while supervisors were secondary school teachers, similarly as before.

It is to be noted that the Population and Housing Census is a huge nationwide operation which could not be undertaken by a single organization. Thus, full cooperation and assistance of government and non-government organizations, donor agencies and the general public have been obtained for the 2007 Population and Housing Census.

The office of the Population Census Commission is therefore, very grateful to the Government of Ethiopia for its huge financial and administrative support. The office is also grateful to the development partners particularly; the United Nations Fund for Population Activities (UNFPA) and the Department for International Development (DFID) for their generous financial, logistics and technical supports. Thanks are also due to the United Nations Development Program (UNDP), the Embassy of Japan, Italian Cooperation, United Nations International Children's Emergency Fund (UNICEF), as well as the Dutch and Irish Governments for their substantial financial support.

Finally, the office would like to express its appreciation for the elementary and secondary school teachers who participated in the data collection and supervision activities; the staff members of the Central Statistical Agency for their invaluable contributions throughout the census operations and also more importantly, the general public as well as the administrators at all levels, who were critical to the success of census enumeration.

The office hopes that the data contained in the Summary and Statistical Reports will be utilized by all data users for various development planning.

Samia Zekaria
Member and Secretary
Population Census Commission

TABLE OF CONTENTS

	PAGE
Forward.....	i
Table of Contents.....	iii
List of Tables.....	v
List of Figures	viii
SECTION I POPULATION SIZE AND SPATIAL DISTRIBUTIONS	1
1.1 Introduction.....	1
1.2 Population Distribution by Urban-Rural and Sex	1
1.3 Sex and Age Composition of the Population	3
1.3.1 Sex Composition of the Population	3
1.3.2 Age Composition of the Population	5
1.4 Household Composition of the Population	7
1.5 Headship Rates	7
SECTION II ETHNIC GROUP, MOTHER TONGUE, RELIGION AND MARITAL STATUS.....	9
2.1 Ethnic Composition of the Population	9
2.2 Distribution of the Population by Mother Tongue	10
2.3 Religious Composition of the Population.....	11
2.4 Marital Status	12
SECTION III DISABILITY AND ORPHANHOOD	15
3.1 Disability Status	15
3.2 Orphanhood Status	20

SECTION IV EDUCATIONAL CHARACTERISTICS	23
4.1 Literacy Status	23
4.2 School Attendance	25
SECTION V ECONOMIC ACTIVITY STATUS	31
5.1 Introduction	31
5.2 Economic Activity Rate	32
5.3 Employment Status	34
5.4 Unemployment Rate.....	35
SECTION VI HOUSING CHARACTERISTICS AND CONDITIONS	37
6.1 Structural Type of Housing Units	37
6.2 Source of Drinking Water	39
6.3 Availability of Toilet Facility	40
6.4 Status of Occupancy	41
6.5 Type of Lighting	41
6.6 Type of Waste Disposal	43
6.7 Type of Tenure	43
6.8 Household Durable Goods	43
6.8.1 Availability of Radio	44
6.8.2 Availability of Television	45
6.8.3 Availability of Telephone.....	46
Annex	47

LIST OF TABLES

SECTION I POPULATION SIZE AND SPATIAL DISTRIBUTIONS

Table 1.1	Distributions of Population by Census Period and Sex; Harari Region: 2007.....	1
Table 1.2	Distribution of Population by Sex and Place of Residence; Harari Region: 2007.....	2
Table 1.3	Distribution of Population by Place of Residence, Sex and Sex Ratio; Harari Region: 2007.....	4
Table 1.4	Distributions of Conventional Households and their Corresponding Population by Census Period; Harari Region: 1994 & 2007.....	7
Table 1.5	Heads of Households for Conventional Households by Age Group and Sex of Heads; Harari Region: 2007.....	8

SECTION II ETHNIC GROUP, MOTHER TONGUE RELIGION AND MARITAL STATUS

Table 2.1	Percentage Distribution of Ethnic Groups with One thousand and more Persons by Census Period; Harari Region: 1994 & 2007.....	9
Table 2.2	Distribution of Major Mother Tongues; Harari Region: 2007.....	10
Table 2.3	Percentage Distribution of the Population by Religion; Harari Region: 2007.....	11
Table 2.4	Percentage Distribution of the Population by Marital Status; Harari Region: 2007.....	12

SECTION III DISABILITY AND ORPHAN HOOD

Table 3.1	Population by Sex and Disability Status with Disability Rate; Harari Region: 2007.....	16
Table 3.2	Population by Sex, Disability Status, and Five Year Age Group, with Disability Rate; Harari Region: 2007.....	17
Table 3.3	Percentage Distribution of Disabled Persons by Type of Disability; Harari Region: 2007.....	18
Table 3.4	Percentage Distribution of Disabled Persons by Cause of Disability; Harari Region: 2007.....	19
Table 3.5	Proportion of Survivorship of Parents for Children less than 18 years of Age by Sex; Harari Region: 2007.....	21

Table 3.6	Children under 18 Years of Age by Orphanhood Status, Sex and Single Age; Harari Region: 2007.....	22
-----------	--	----

SECTION IV EDUCATIONAL CHARACTERISTICS

Table 4.1	Percentage Distribution of Literate Population aged 10 Years and above by Sex And Census Period; Harari Region: 1994 & 2007.....	24
Table 4.2	Population 10 Years old and above by literacy rates, sex and Age Group; Harari Region: 2007.....	24
Table 4.3	Percentage Distribution of Population Five Years old and above currently attending School by Sex and Census Period; Harari Region: 1994 & 2007.....	26
Table 4.4	Percentage Distribution of Population Five Years old and above by Status of School Attendance and Sex; Harari Region: 2007.....	27

SECTION V ECONOMIC ACTIVITY STATUS

SECTION VI HOUSING CHARACTERISTICS AND CONDITIONS

Table 6.1	Percentage Distribution of Housing Units by Type and Place of Residence; Harari Region: 2007.....	49
Table 6.2	Percentage Distribution of Housing Units by Source of Drinking Water and Place of Residence; Harari Region: 2007.....	49
Table 6.3	Percentage Distributions of Housing Units by Availability of Toilet Facility and Place of Residence; Harari Region: 2007.....	49
Table 6.4	Percentage Distribution of Urban Housing Units by Status of Occupancy; Harari Region: 2007.....	50
Table 6.5	Percentage Distributions of Housing Units by Type of Lighting and Place of Residence; Harari Region: 2007.....	50

Table 6.6	Percentage Distribution of Urban Housing Units by Type of Waste Disposal; Harari Region: 2007.....	50
Table 6.7	Percentage Distribution of Urban Housing Units by Type of Tenure; Harari Region: 2007.....	51
Table 6.8	Percentage Distribution of Housing Units by Availability of Radio and Place of Residence; Harari Region: 2007.....	51
Table 6.9	Percentage Distribution of Housing Units by Availability of Television and Place of Residence; Harari Region: 2007.....	52
Table 6.10	Percentage Distribution of Housing Units by Availability of Telephone and Place of Residence; Harari Region: 2007.....	52

LIST OF FIGURES

SECTION I POPULATION SIZE AND SPATIAL DISTRIBUTIONS

Figure 1.1	<i>Distribution of Population by Place of Residence and Census Period;</i> <i>Harari Region: 2007.....</i>	2
Figure 1.2	<i>Percentage Distribution of Population by place of residence; Harari Region: 1994.....</i>	3
Figure 1.3	<i>Percentage Distribution of Population by place of residence; Harari Region: 2007.....</i>	3
Figure 1.4	<i>Distribution of Population by Place of Residence, Sex Ratios and Age Group;</i> <i>Harari Region: 2007.....</i>	4
Figure 1.5	<i>Age Pyramid (Urban + Rural); Harari Region: 2007.....</i>	5
Figure 1.5.1	<i>Age Pyramid of the Urban Population; Harari Region: 2007.....</i>	6
Figure 1.5.2	<i>Age Pyramid of the Rural Population; Harari Region: 2007.....</i>	6
Figure 1.6	<i>Percentage Distribution of Population by Broad Age Group and Census Period</i> <i>Harari Region: 1994 & 2007.....</i>	6
Figure 1.7	<i>Distribution of Headship Rates in Conventional Households by Sex and Age Group;</i> <i>Harari Region: 2007.....</i>	8
SECTION II ETHNIC GROUP, MOTHER TONGUE, RELIGION AND MARITAL STATUS		
Figure 2.1	<i>Percentage Distribution of Ethnic Groups with One thousand and more Persons by</i> <i>Census Period, Harari Region: 1994 & 2007.....</i>	10
Figure 2.2	<i>Percentage Distribution of the Population by Religious Affiliation;</i> <i>Harari Region: 2007.....</i>	11
Figure 2.3a	<i>Percentage Distribution of Never Married Person by Sex and Age Group;</i> <i>Harari Region: 2007.....</i>	12
Figure 2.3b	<i>Percentage Distribution of Currently Married Person by Sex and Age Group;</i> <i>Harari Region: 2007.....</i>	13
Figure 2.3c	<i>Percentage Distribution of Widowed Person by Sex and Age Group;</i> <i>Harari Region: 2007.....</i>	13

SECTION III DISABILITY AND ORPHAN HOOD

Figure 3.1	Distribution of Disability Rates by Sex and Age Group; Harari Region: 2007.....	17
Figure 3.2	Percentage Distribution of Disabled Persons by Type of Disability; Harari Region: 2007.....	18
Figure 3.3	Percentage Distribution of Disabled Persons by Reason for Disability; Harari Region: 2007.....	19
Figure 3.4	Percentage Distribution of Orphanhood Status of male; Harari Region: 2007.....	21
Figure 3.5	Percentage Distribution of Orphanhood Status of female; Harari Region: 2007.....	22

SECTION IV EDUCATIONAL CHARACTERISTICS

Figure 4.1	Percentage Distribution of Literate Persons by Sex and Census Period; Harari Region: 1994 & 2007.....	24
Figure 4.2	Percentage Distribution of Literacy Rates by Sex and Age Group; Harari Region: 2007.....	25
Figure 4.3	Percentage Distribution of Population Five Years old and above attending School by Sex and Census Period; Harari Region: 1994 & 2007.....	26
Figure 4.3a	Percentage Distribution of Population Five Years old and above by Currently Attending School, Sex and Age Group; Harari Region: 2007	28
Figure 4.3b	Percentage Distribution of Population Five Years old and above by School Attending in the past, Sex and Age Group; Harari Region: 2007.....	28
Figure 4.3c	Percentage Distribution of Population Five Years old and above by Never Attended School, Sex and Age Group; Harari Region: 2007	29

SECTION V ECONOMIC ACTIVITY STATUS

Figure 5.1	Distribution of Economic Activity Rates by Sex and Place of Residence; Harari Region: 2007.....	32
------------	--	----

Figure 5.2	Distribution of Economic Activity Rates by Age Group and Place of Residence; Harari Region: 2007.....	33
Figure 5.3	Percentage Distribution of Employment Status by Broad Age Group; Harari Region: 2007.....	34
Figure 5.4	Percentage Distribution of Paid Employed Persons by Sex and Age Group; Harari Region: 2007.....	35
Figure 5.5	Distribution of Unemployment Rate by Place of Residence and Census Period; Harari Region: 1994 & 2007.....	35

SECTION VI HOUSING CHARACTERISTICS AND CONDITIONS

Figure 6.1	Percentage Distribution of Housing Units by Type; Harari Region: 2007.....	38
Figure 6.2	Percentage Distribution of Housing Units by Type and Census Period; Harari Region: 1994 & 2007.....	38
Figure 6.3	Percentage Distribution of Housing Units by safe Drinking Water and Place of Residence; Harari Region: 2007.....	39
Figure 6.4	Percentage Distribution of Housing Units by Source of Drinking Water and Census Period; Harari Region: 1994 & 2007.....	40
Figure 6.5	Percentage Distribution of Housing Units with Toilet Facility and Place of Residence; Harari Region: 2007.....	40
Figure 6.6	Percentage Distribution of Urban Housing Units with Toilet Facility and Census Period; Harari Region: 1994 & 2007.....	41
Figure 6.7	Percentage Distribution of Housing Units with Electricity Facility and Place of Residence; Harari Region: 2007.....	42
Figure 6.8	Percentage Distribution of Urban Housing Units with Electricity Facility and Census Period; Harari Region: 1994 & 2007.....	42
Figure 6.9	Percentage Distribution of Urban Housing Units by Type of Tenure; Harari Region: 2007.....	43

Figure 6.10 Percentage Distribution of Housing Units by Availability of Radio and Place of Residence; Harari Region: 2007.....44

Figure 6.11 Percentage Distribution of Housing Units by Availability of Radio and Census Period, Harari Region: 1994 & 2007.....44

Figure 8.12 Percentage Distribution of Housing Units by Availability of Television and Place of Residence; Harari Region: 2007.....45

Figure 6.13 Percentage Distribution of Urban Housing Units by Availability of Television and Census Period; Harari Region: 1994 & 2007.....45

Figure 6.14 Percentage Distribution of Housing Units by Availability of Telephone and Place of Residence; Harari Region: 2007.....46

Figure 6.15 Percentage Distribution of Housing Units by Availability of Telephone and Census Period; Harari Region: 1994 & 2007.....46

Table 1.1 Distributions of Population by Census Period and Sex; Harari Region: 2007

Region	1994			2007			percent increase of Population (2007)
	Both sex	Male	Female	Both sex	Male	Female	
Country Total	53,477,262	26,910,689	26,566,567	73,790,932	37,217,130	36,533,802	37.9
Harari	171,139	65,550	65,589	183,615	92,316	91,099	39.9

Table 1.1 shows that at country level the total population has increased by 37.9 percent over the last 12 years. Whereas in Harari region the increment was slightly higher (39.9 percent) than the national average.

1.2 POPULATION DISTRIBUTION BY URBAN-RURAL AND SEX

In 2007 Population and Housing Census (PHC) urban center or urban is defined as all administrative capitals (Region, Zone and Wereda) and localities in which urban kebeles were established irrespective of their population size. It is worth nothing that this definition of urban

44	Percentage Distribution of Housing Units by Availability of Radio and Place of Residence; Harari Region; 2007	Figure 6.10
44	Percentage Distribution of Housing Units by Availability of Radio and Census Period; Harari Region; 1994 & 2007	Figure 6.11
44	Percentage Distribution of Housing Units by Availability of Television and Place of Residence; Harari Region; 2007	Figure 6.12
44	Percentage Distribution of Housing Units by Availability of Television and Census Period; Harari Region; 1994 & 2007	Figure 6.13
45	Percentage Distribution of Urban Housing Units by Availability of Television and Census Period; Harari Region; 1994 & 2007	Figure 6.14
SECTION VI TELEPHONE AND TELEVISION		
46	Percentage Distribution of Housing Units by Availability of Telephone and Place of Residence; Harari Region; 2007	Figure 6.15
46	Percentage Distribution of Housing Units by Availability of Telephone and Census Period; Harari Region; 1994 & 2007	Figure 6.16
46	Percentage Distribution of Housing Units by Availability of Telephone and Urban Housing Units; Harari Region; 2007	Figure 6.17
46	Percentage Distribution of Housing Units by Availability of Telephone and Census Period; Harari Region; 1994 & 2007	Figure 6.18
46	Percentage Distribution of Housing Units by Source of Drinking Water and Place of Residence; Harari Region; 2007	Figure 6.19
46	Percentage Distribution of Housing Units by Source of Drinking Water and Census Period; Harari Region; 1994 & 2007	Figure 6.20
46	Percentage Distribution of Housing Units with Toilet Facility and Place of Residence; Harari Region; 2007	Figure 6.21
46	Percentage Distribution of Urban Housing Units with Toilet Facility and Census Period; Harari Region; 1994 & 2007	Figure 6.22
46	Percentage Distribution of Housing Units with Electricity Facility and Place of Residence; Harari Region; 2007	Figure 6.23
46	Percentage Distribution of Urban Housing Units with Electricity Facility and Census Period; Harari Region; 1994 & 2007	Figure 6.24
46	Percentage Distribution of Urban Housing Units by Type of Housing; Harari Region; 2007	Figure 6.25

SECTION I

POPULATION SIZE AND SPATIAL DISTRIBUTIONS

1.1 Introduction

Population size, compositions, its spatial distribution and some other demographic and socio-economic data are very important for planning, monitoring and evaluation of various development programs. The population and housing census is one of the main sources of these data. This chapter presents the results of the 2007 census concerning the population size, distributions, compositions and other related information. As shown in Table 1.1, the counted population of Harari region as of May 28, 2007 was 183,415. Of these counted population of the region, 92,316 (50.33 percent) were males and 91,099 (49.67 percent) were females. Comparison of the total population of Harari region obtained from the 2007 census result with that the 1994 census count shows that the population of Harari region has increased by 52,276 persons over the last 12 years.

Table 1.1 Distributions of Population by Census Period and Sex; Harari Region: 2007

Region	1994			2007			percent Increase of Population (2007)
	Both sex	Male	Female	Both sex	Male	Female	
Country Total	53,477,265	26,910,698	26,566,567	73,750,932	37,217,130	36,533,802	37.9
Harari	131,139	65,550	65,589	183,415	92,316	91,099	39.9

Table 1.1 shows that at country level the total population has increased by 37.9 percent over the last 12 years. Whereas in Harari region the increment was slightly higher (39.9 percent) than the national average.

1.2 POPULATION DISTRIBUTION BY URBAN-RURAL AND SEX

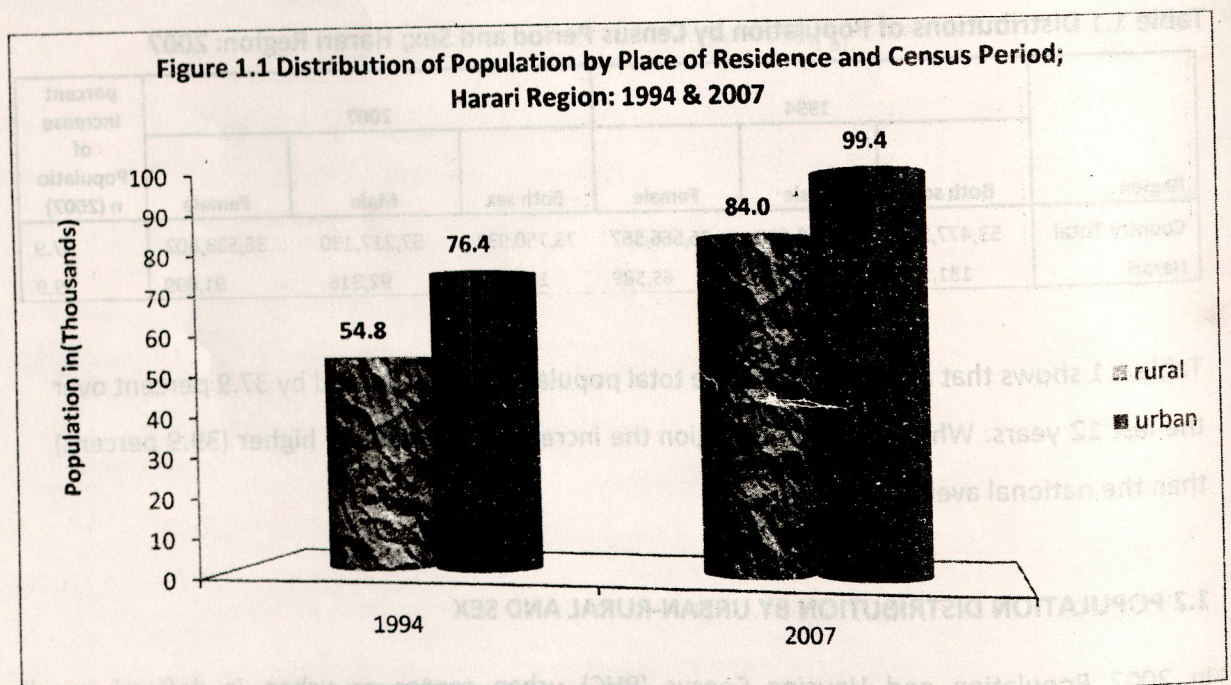
In 2007 Population and Housing Census (PHC) urban center or urban is defined as all administrative capitals (Region, Zone and Wereda) and localities in which urban kebeles were established irrespective of their population size. It is worth nothing that this definition of urban

is consistent with that of the 1994 Population and Housing Census. Table 1.2 shows that, at country level 16.1 percent of the total population was enumerated as residents of urban areas in the 2007 PHC. Whereas the proportions of urban population in Harari region is 54.2 percent, more than three times larger than proportion of urban population at country level.

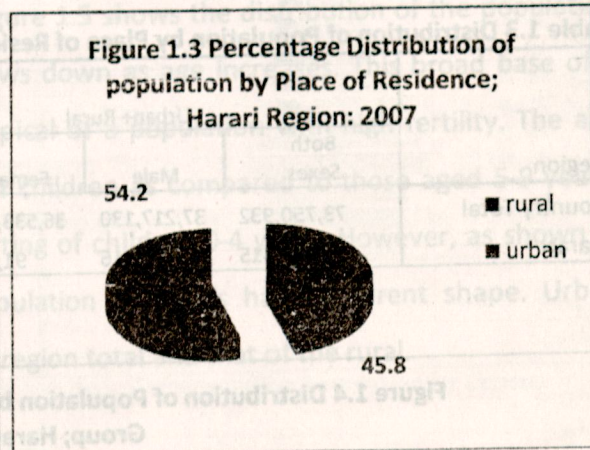
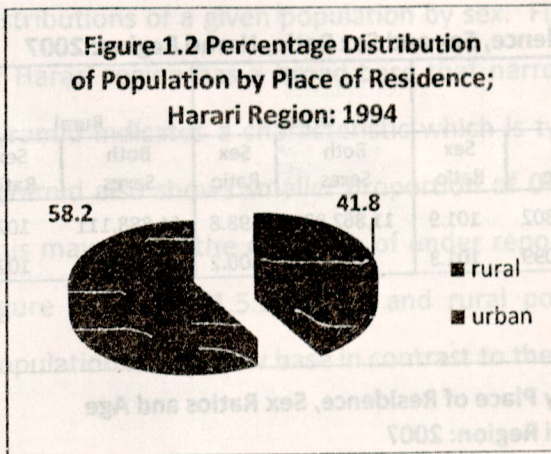
Table 1.2 Distribution of Population by Sex and Place of Residence; Harari Region: 2007

Regions	Urban		Rural		Urban+ Rural		percent Urban from Total	percent Rural from Total
	Both Sexes	percent	Both Sexes	percent	Both Sexes	percent		
Country Total	11,862,821	16.1	61,888,111	83.92	73,750,932	100.0	100.00	100.00
Harari	99,368	54.2	84,047	45.82	183,415	100.0	0.84	0.14

Figure 1.1 shows that urban population has significantly increased in size. That is, the number of urban dwellers has increased from about 76,400 persons in 1994 to about 99,400 persons in 2007, an increase of about 23,000 persons over the last 12 years.



As shown in Figure 1.2 and 1.3, in 1994 and 2007 the proportions of urban population were 58.2 percent and 54.2 percent, respectively. This indicates that the proportion of urban population has declined from 1994 to 2007 by four percent. Correspondingly, the proportion of rural population has increased by four percent over the last 12 years.



1.3 Sex and Age Composition of the Population

Demographic data that show the age and sex compositions of the population are one of the basic information needed for different purposes. This sub-section provides the summary results of sex and age compositions of the population obtained from the 2007 population and housing census.

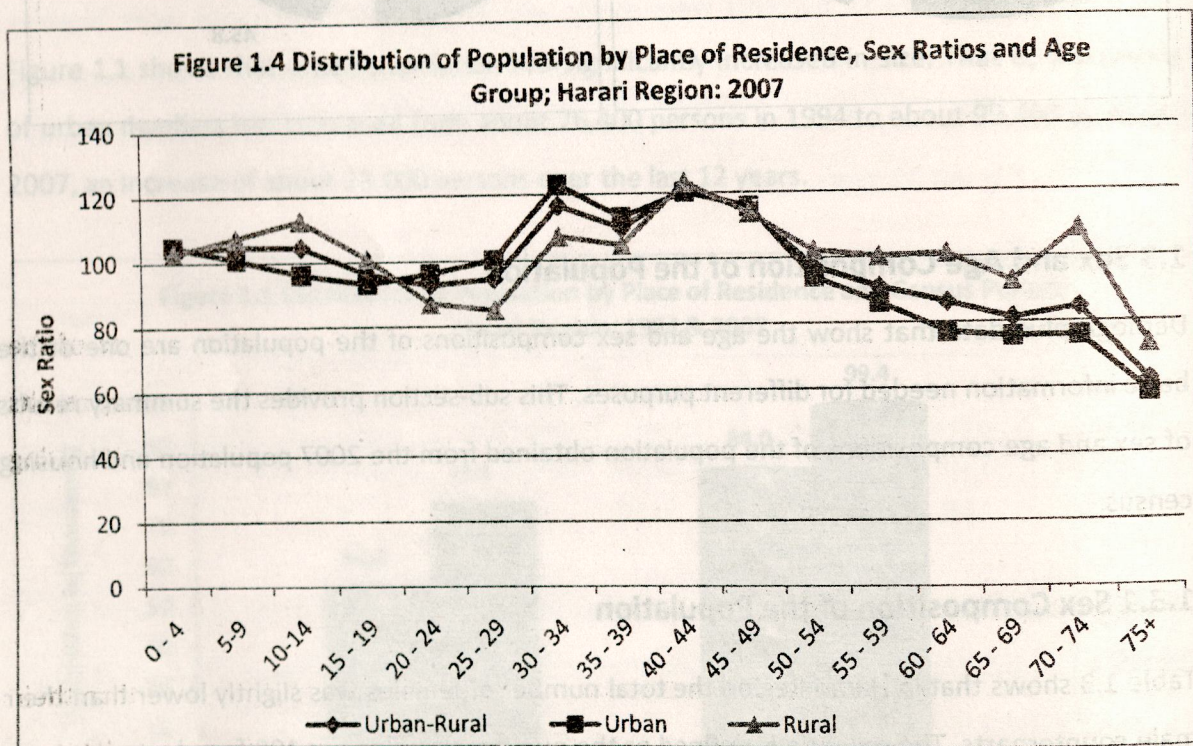
1.3.1 Sex Composition of the Population

Table 1.3 shows that in Harari Region the total number of females was slightly lower than their male counterparts. The sex ratio is defined as the number of males per 100 females and it is an index used to express relative size of the sex composition of the population. A ratio greater than hundred shows an excess number of males than females. Sex ratios were calculated for Harari region by place of residence and the results are presented in Table 1.3. As shown in the table, the sex ratios for urban and rural population are greater than hundred in Harari Region.

Figure 1.4 presents sex ratios of the population of Harari Region by age group and urban-rural residence. As can be seen from the figure, in urban areas sex ratios decline as age advances up to age group 15-19 and then increase up to age group 30-34 and declines again from 45-69 years.

Table 1.3 Distribution of Population by Place of Residence, Sex and Sex Ratio, Harari Region: 2007

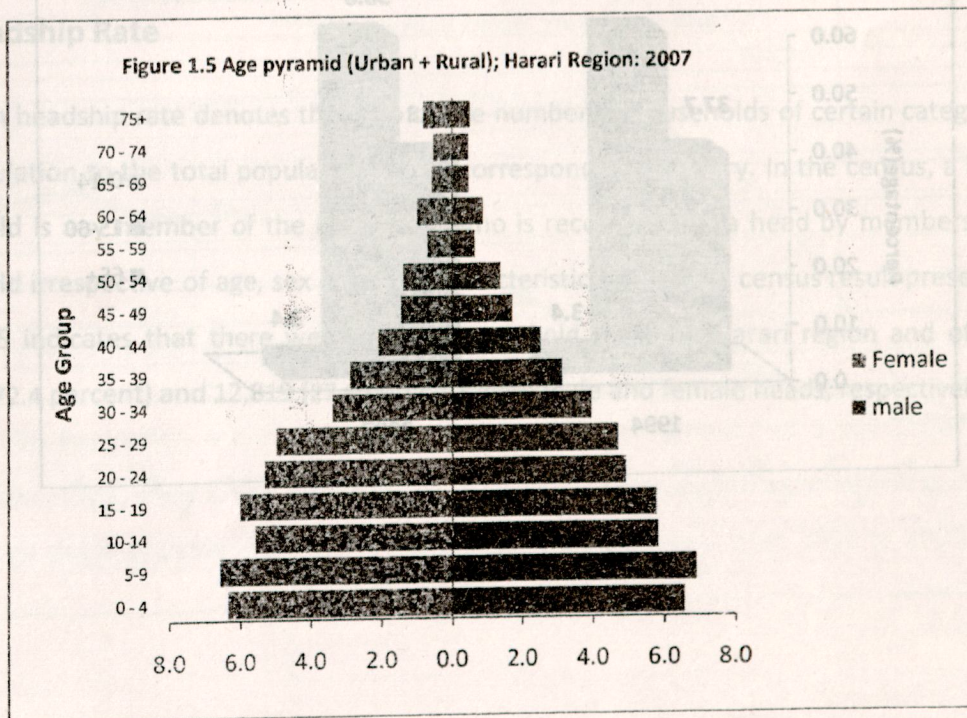
Region	Urban+ Rural				Urban		Rural	
	Both Sexes	Male	Female	Sex Ratio	Both Sexes	Sex Ratio	Both Sexes	Sex Ratio
Country Total	73,750,932	37,217,130	36,533,802	101.9	11,862,821	98.8	61,888,111	102.5
Harari	183,415	92,316	91,099	101.3	99,368	100.2	84,047	102.7

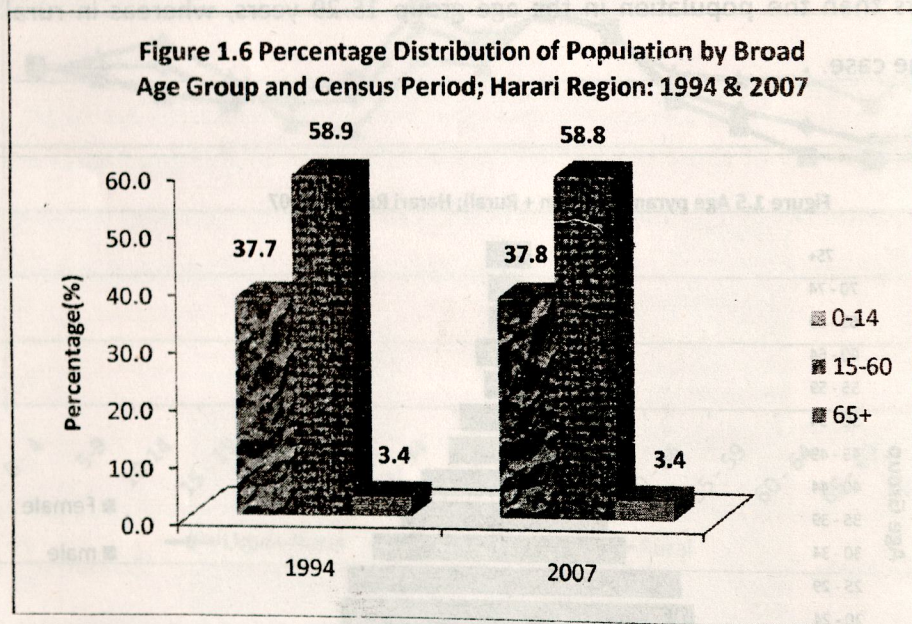
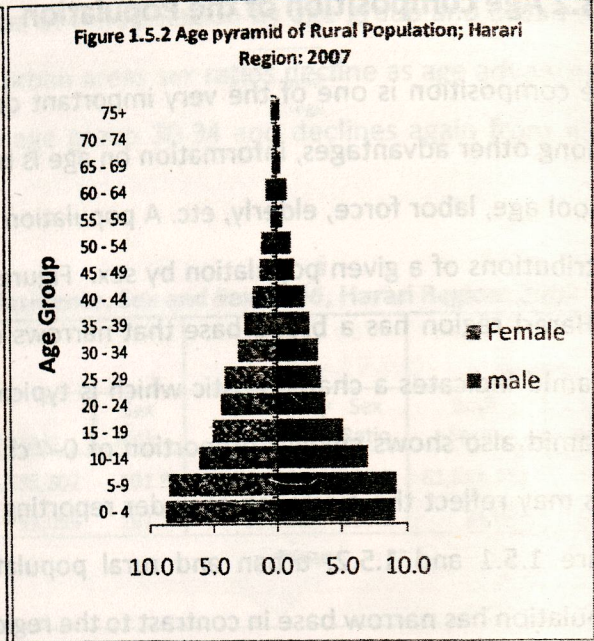
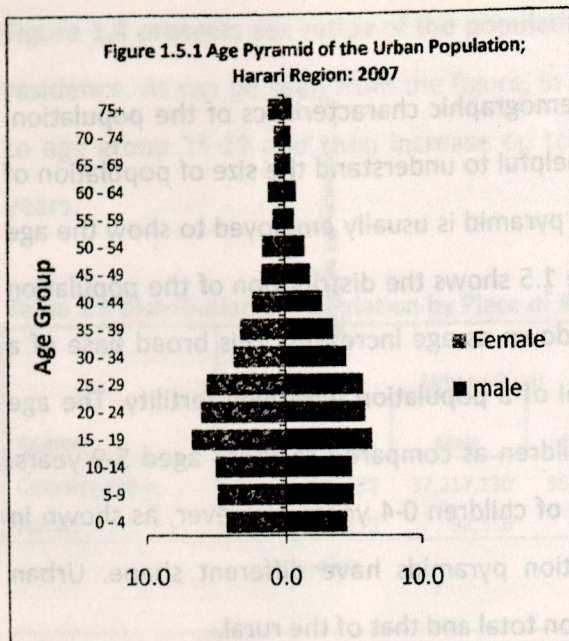


1.3.2 Age composition of the Population

Age composition is one of the very important demographic characteristics of the population. Among other advantages, information on age is helpful to understand the size of population of school age, labor force, elderly, etc. A population pyramid is usually employed to show the age distributions of a given population by sex. Figure 1.5 shows the distribution of the population of Harari region has a broad base that narrows down as age increases. This broad base of a pyramid indicates a characteristic which is typical of a population with high fertility. The age pyramid also shows smaller proportion of 0-4 children as compared to those aged 5-9 years. This may reflect the existence of under reporting of children 0-4 years. However, as shown in figure 1.5.1 and 1.5.2, urban and rural population pyramids have different shape. Urban population has narrow base in contrast to the region total and that of the rural.

Moreover, the urban age distribution show that there were fewer number of children under age 15 years than the population in the age group 15-29 years, whereas in rural areas the reverse is the case.





1.4 Household Composition of the Population

In the census household is defined as a group of persons living together in the same housing unit or in connected premises and have a common cooking arrangements (eat together). This sub-section provides information about the number of households and average household size of Harari region.

According to the 2007 census results, the number of household in Harari was 46,417 with an average household size of 3.9 persons. As shown in Table 1.4 comparing the 2007 census results with the 1994, at national level the average household size has decreased by 0.1 person only and in Harari region the decline was 0.4.

Table 1.4 Distributions of Conventional Households and their Corresponding Population by Census Period; Harari Region: 1994 & 2007

Region	(2007)			1994
	Persons	No. of Households	Household Size	Household Size
Country Total	73,302,305	15,634,370	4.7	4.8
Harari	179,874	46,417	3.9	4.3

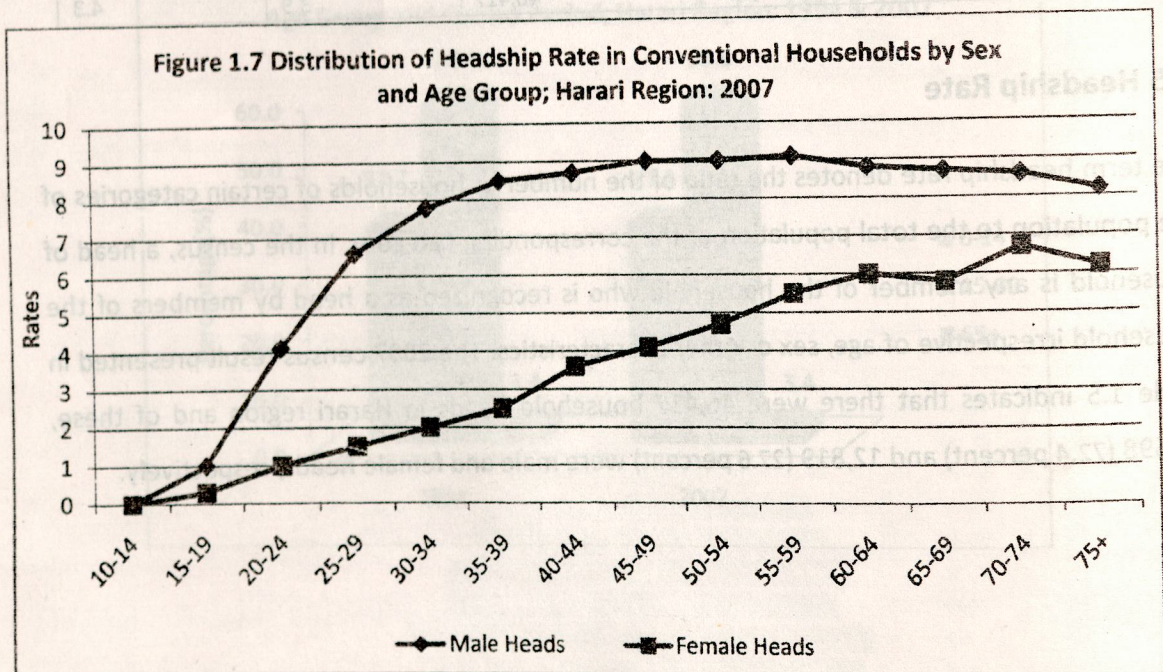
1.5 Headship Rate

The term headship rate denotes the ratio of the number of households of certain categories of the population to the total population of the corresponding category. In the census, a head of household is any member of the household who is recognized as a head by members of the household irrespective of age, sex or other characteristics. The 2007 census result presented in Table 1.5 indicates that there were 46,417 household heads in Harari region and of these, 33,598 (72.4 percent) and 12,819 (27.6 percent) were male and female heads, respectively.

Table 1.5 Heads of Households for Conventional Households by Age Group and Sex of Heads; Harari Region: 2007

Age Group	Population Size			Household Heads		
	Both Sexes	Male	Female	Total Heads	Male Heads	Female Heads
Total	179874	89642	90232	46417	33598	12819
0-4	23631	12026	11605	-	-	-
5-9	24598	12584	12014	-	-	-
10-14	20718	10569	10149	-	-	-
15-19	20865	10049	10816	1270	957	313
20-24	17608	8102	9506	4261	3333	928
25-29	17293	8248	9045	6795	5448	1347
30-34	13215	7056	6159	6708	5499	1209
35-39	10850	5613	5237	6116	4787	1329
40-44	8319	4527	3792	5303	3944	1359
45-49	5774	3075	2699	3867	2755	1112
50-54	4973	2437	2536	3401	2203	1198
55-59	2472	1173	1299	1778	1070	708
60-64	3420	1580	1840	2509	1397	1112
65-69	1908	852	1056	1358	742	616
70-74	1826	836	990	1378	717	661
75+	2404	915	1489	1673	746	927

Figure 1.7 Distribution of Headship Rate in Conventional Households by Sex and Age Group; Harari Region: 2007



SECTION II

ETHNIC GROUP, MOTHER TONGUE, RELIGION AND MARITAL STATUS

2.1. Ethnic Composition of the Population

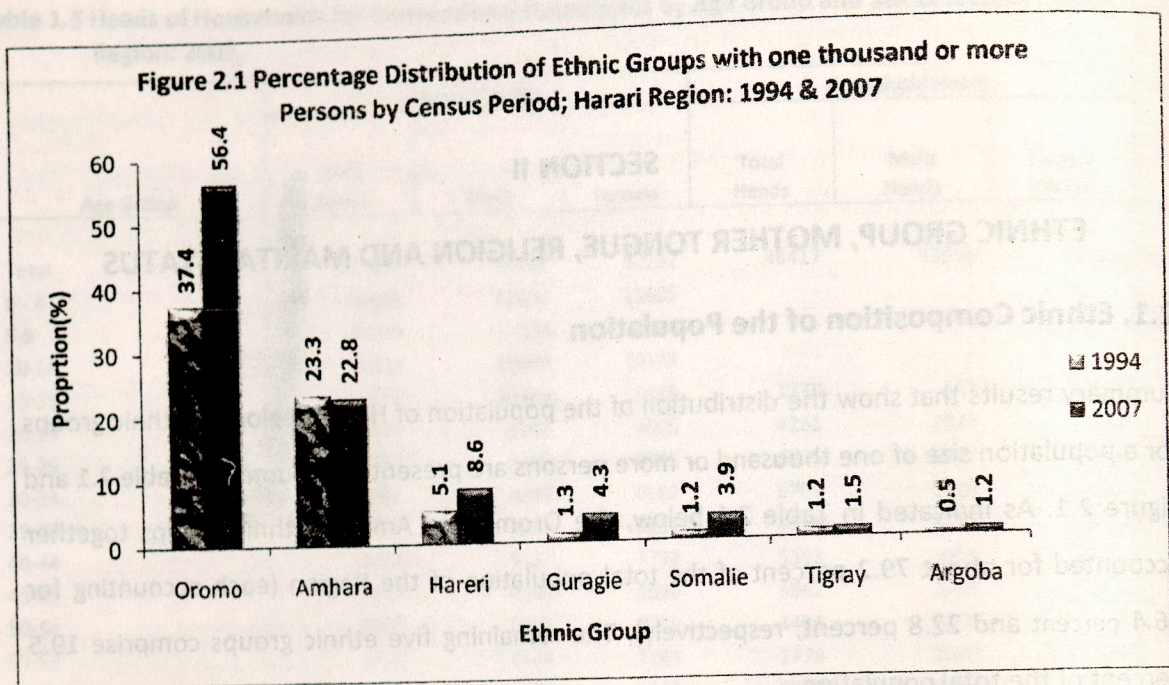
Summary results that show the distribution of the population of Harari region by ethnic groups for a population size of one thousand or more persons are presented in Summary Table 2.1 and Figure 2.1. As indicated in Table 2.1 below, the Oromo and Amhara ethnic groups together accounted for about 79.2 percent of the total population of the Region (each accounting for 56.4 percent and 22.8 percent, respectively). The remaining five ethnic groups comprise 19.5 percent of the total population.

Table 2.1. Percentage Distribution of Ethnic Groups with One thousand and more Persons by Census Period; Harari Region: 1994 & 2007.

Nations/Nationalities (Ethnic Group)	1994		2007	
	Population		Population	
	Number	%	Number	%
Oromo	68,564	37.4	103,468	56.4
Amhara	42,781	23.3	41,768	22.8
Harari	9,374	5.1	15,863	8.6
Guragie	2,422	1.3	7,952	4.3
Somalie	2,199	1.2	7,102	3.9
Tigray	2,244	1.2	2,808	1.5
Argoba	992	0.5	2,287	1.2

*Note: The Guragie population did not include the Silte ethnic group.

In the 1994 Population and Housing Census only Six ethnic groups had a population of one thousand or more, while in the 2007 PHC the number has increased to seven ethnic groups. The percentage share of these nations and nationalities has increased from 1994 to 2007 (except the Amhara).



2.2. Distribution of the Population by Mother Tongue

Mother tongue is defined as the language used by a person for communication with his/her family members or guardians during his/her childhood. In Harari region a number of mother tongue languages are spoken by different ethnic groups. In this summary report only mother tongue languages that had been spoken by one thousand or more people during childhood are shown. According to the result (Table 2.2), Oromigna was the most dominant Mother Tongue (56.8 percent) followed by Amharigna (27.5 percent). Hararigna (7.3 percent) stood third in the region.

Table 2.2. Distribution of Mother Tongues Spoken with Thousand or more Persons; Harari Region: 2007

Languages	Number	Percent
Oromigna	104,263	56.8
Amarigna	50,503	27.5
Hararigna	13,438	7.3
Guragigna	5,339	2.9
Somaligna	6,785	3.7
Tigrigna	1,657	0.9

2.3. Religious Composition of the Population

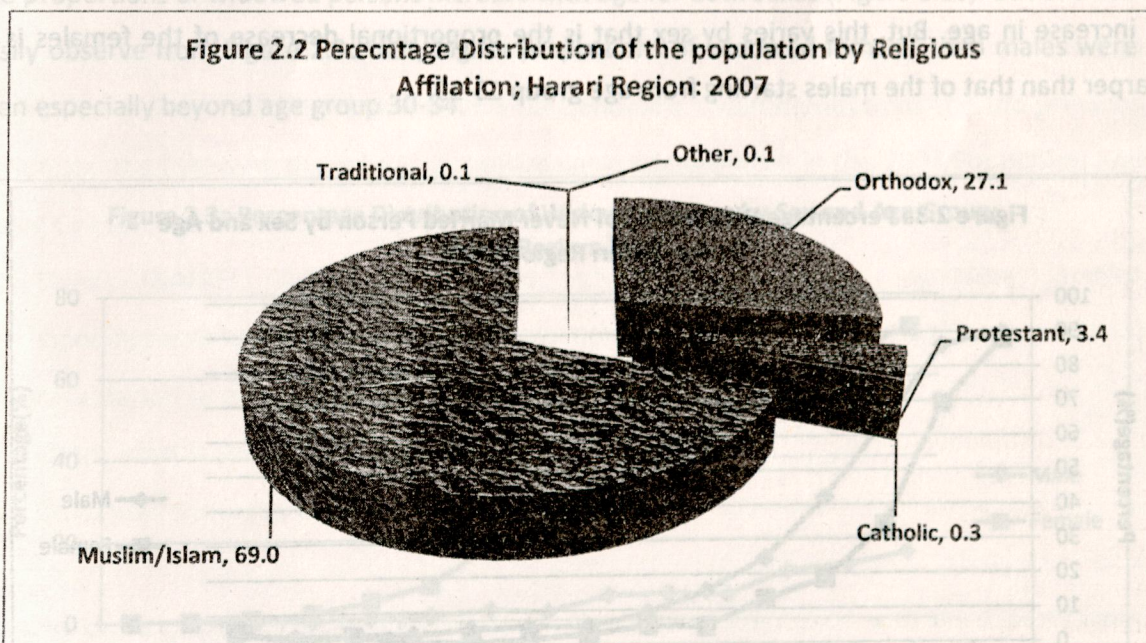
Religion is an affiliation with a group having specific religious or spiritual tenet. It is an important socio-cultural characteristic of a population. Summary Table 2.3 and Figure 2.2 shows the religious affiliations of respondents as recorded in the 2007 PHC.

Table 2.3. Percentage Distribution of Population by Religion; Harari Region: 2007

Region	Religion					
	Orthodox	Protestant	Catholic	Muslim/Islam	Traditional	Others
HARARI REGION	27.1	3.4	0.3	69.0	0.1	0.1

According to the 2007 census result, the Muslim religion was the most dominant religion in the Region (69.0 percent) followed by Orthodox (27.1 percent). Protestant and Catholic accounted for 3.4 percent and 0.3 percent, respectively.

Figure 2.2 Percentage Distribution of the population by Religious Affiliation; Harari Region: 2007



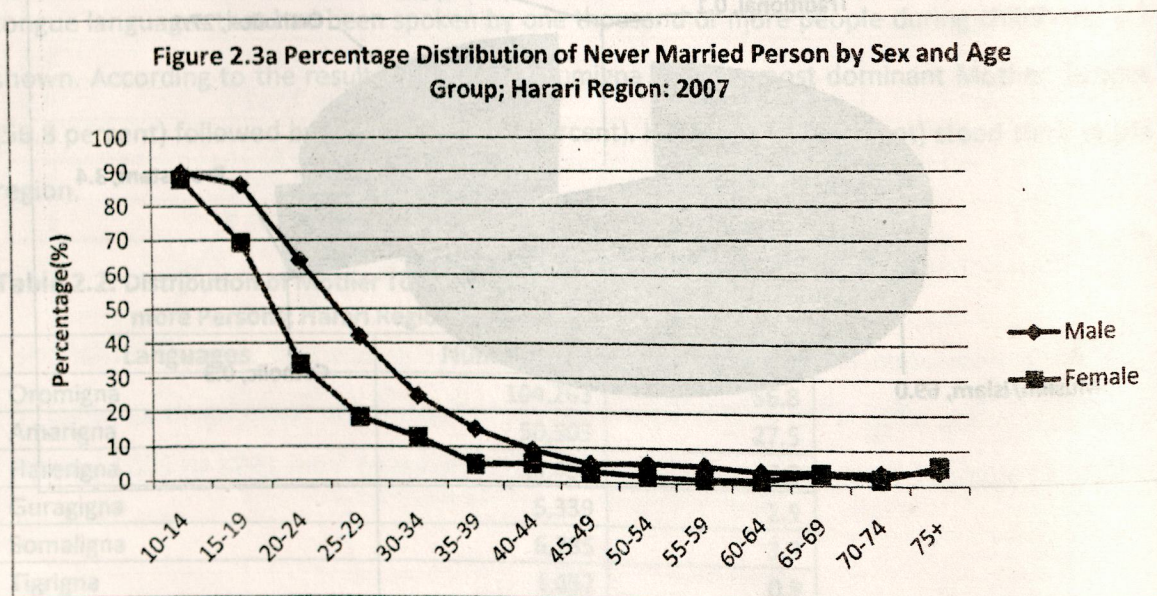
2.4. Marital Status

Results of the 2007 PHC classified marital status under six categories for the population aged ten years & above (see Summary Table 2.4). Accordingly, 40.7 percent was never married, 48.5 percent currently married and 2.9 percent divorced. Comparing the sex disaggregated distribution of marital status; about 48.8 percent of the females and 48.2 percent of males were married. Similarly, about 47.0 percent of the males and 34.4 percent of the females were never married.

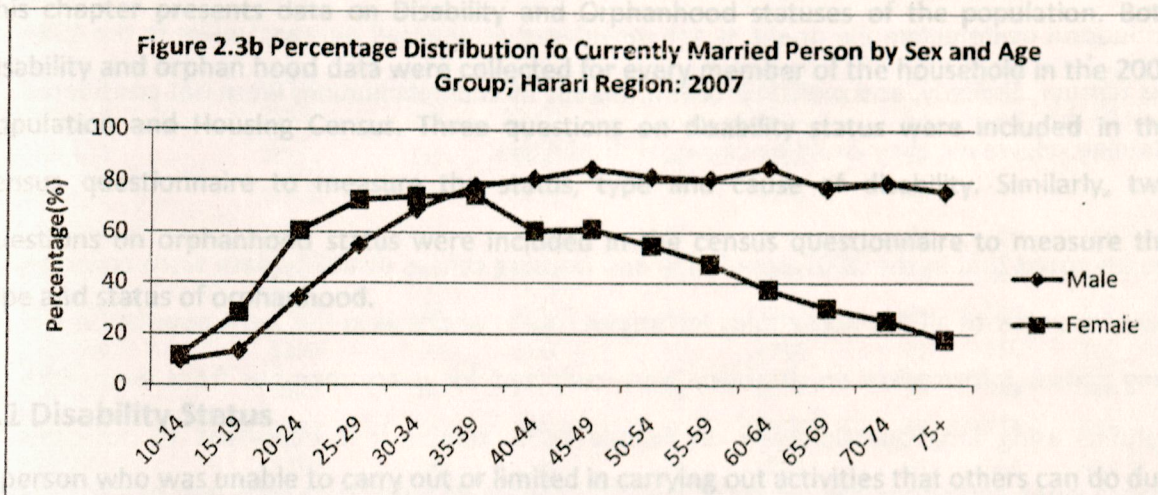
Table 2.4 Percentage Distribution of the Population by Marital Status; Harari Region: 2007

Sex	Marital Status					
	Never Married	Currently Married	Divorced	Separated	Widow/Widower	Living Together
Both Sexes	40.7	48.5	2.9	1.7	6.0	0.1
Male	47.0	48.2	2.0	1.2	1.5	0.1
Female	34.4	48.8	3.9	2.2	10.5	0.1

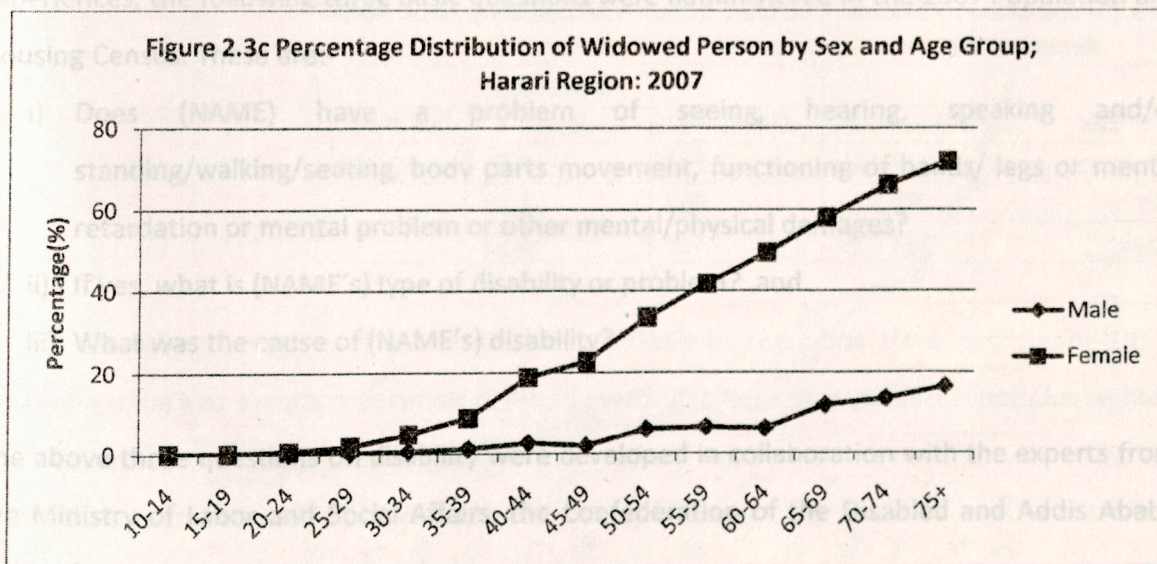
Looking at Figure 2.3a, the proportions of never married persons for both sexes decrease with an increase in age. But, this varies by sex that is the proportional decrease of the females is sharper than that of the males starting from age group 15-19.



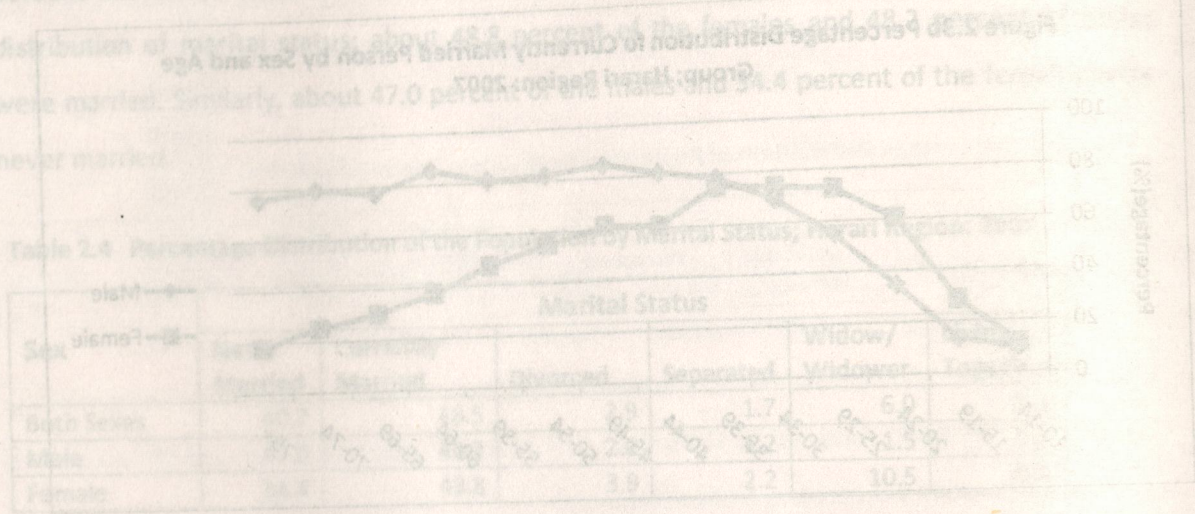
The proportion of currently married persons increases with age for both sexes (Figure 2.3b). However, the increase is more pronounced for the females than the males at earlier ages. For the males, the proportions stay almost constant starting from age group 30-34, whereas for the females the decline starts earlier than age 35.



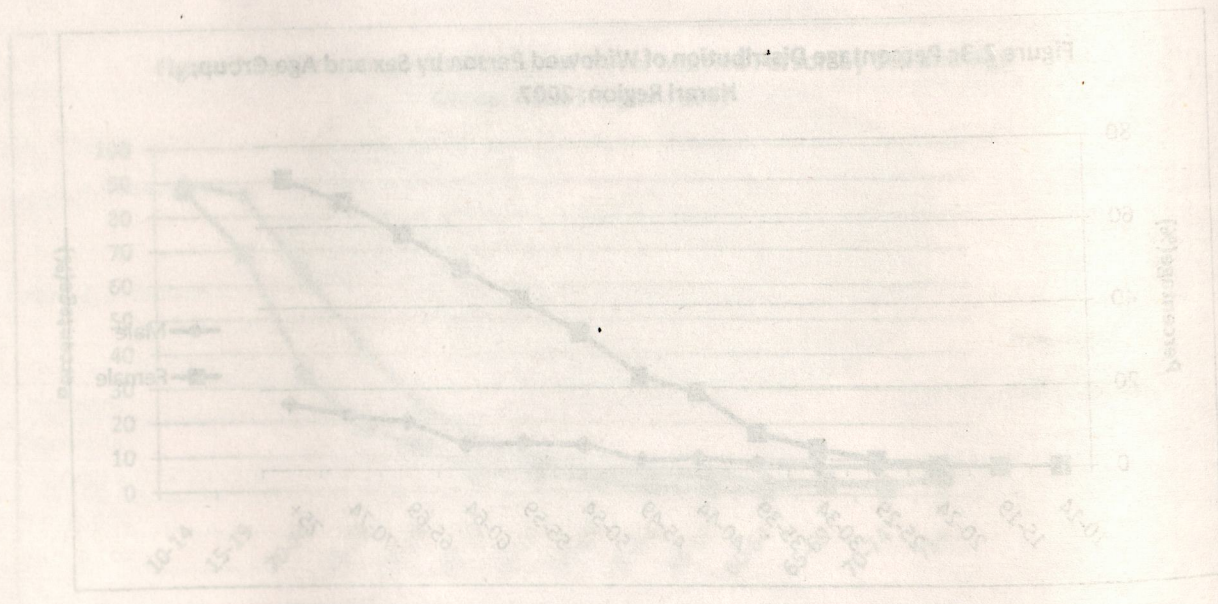
The proportions of widowed persons increase with age for both sexes (Figure 2.3c). But one can easily observe from Figure 2.3c that, higher proportions of widowed females than males were seen especially beyond age group 30-34.



The proportion of currently married persons increases with age for both sexes (Figure 2.3b). However, the increase is more pronounced for the females than the males at earlier ages. For the males, the proportions stay almost constant starting from age group 30-34, whereas for the females the decline starts earlier than age 35.



The proportions of widowed persons increase with age for both sexes (Figure 2.3c). But one can easily observe from Figure 2.3c that, higher proportions of widowed females than males were seen especially beyond age group 30-34.



SECTION III

DISABILITY AND ORPHANHOOD

This chapter presents data on Disability and Orphanhood statuses of the population. Both disability and orphan hood data were collected for every member of the household in the 2007 Population and Housing Census. Three questions on disability status were included in the census questionnaire to measure the status, type and cause of disability. Similarly, two questions on orphanhood status were included in the census questionnaire to measure the type and status of orphanhood.

3.1 Disability Status

A person who was unable to carry out or limited in carrying out activities that others can do due to congenital or long term physical/mental disabilities was identified as a disabled person, but short term difficulties due to temporary conditions were excluded. In general, a person was defined as disabled if due to physical or mental injuries could not fully perform activities that other healthy person could do. Based on this UN definition, recommendations and the previous experiences, the following three basic questions were administered in the 2007 Population and Housing Census. These are:-

- i) Does (NAME) have a problem of seeing, hearing, speaking and/or standing/walking/seating, body parts movement, functioning of hands/ legs or mental retardation or mental problem or other mental/physical damages?
- ii) If yes, what is (NAME's) type of disability or problem? and
- iii) What was the cause of (NAME's) disability?

The above three questions on disability were developed in collaboration with the experts from the Ministry of Labor and Social Affairs, the Confederation of the Disabled and Addis Ababa University.

The 2007 Population and Housing Census excludes the following persons from being classified as disabled for they are being capable of performing activities that other healthy persons could do. Persons with one eye or one ear as long as the person is able to fully perform activities in the manner or within the range considered normal for a human being, even if his/her other eye or ear is blind or defective, he or she is not considered as disabled person. Unlike in the 1994 census leprosy, epilepsy, and mental problem (except mental retardation) were not considered as disability. However, they could be causes of disabilities.

It is to be noted that in the 2007 population and housing census disability data were collected for every member of all the households (complete count) where as in the 1994 population and housing census information on disability were collected for every member from every fifth households using long questionnaire on sample basis. Hence, it is important to note this difference when comparing the results of the 2007 census disability data with that of the 1994 census results.

The following tables and graphs illustrate the summarized results of disability data in Harari region.

Table 3.1 Population by Sex and Disability Status with Disability Rate; Harari Region: 2007

Sex	All Person	Disabled	Disability Rate	Sex Ratio
Both Sexes	183,415	1,790	0.98	113.6
Male	92,316	952	1.03	
Female	91,099	838	0.92	

Table 3.1 shows the levels and rates of disability and the sex ratio of Harari region for the disabled population. Disability rate is slightly lower (0.98) in Harari as compare to Country level (1.09). When we see the sex ratio of the disabled population, Harari region and country level had almost the same, however the rates of disability were somewhat higher among male than female.

Table 3.2 Population by Sex, Disability Status, and Five Year Age Group, with Disability Rate; Harari Region: 2007

Age Group	Both Sexes		Male		Female		Rate Per 10,000		
	All Persons	Disabled Persons	All Males	Disabled Males	All Females	Disabled Females	Both Sexes	Males	Females
0 - 4	23736	82	12071	43	11665	39	35	36	33
5 - 9	24760	125	12670	69	12090	56	50	54	46
10 - 14	20882	124	10672	61	10210	63	59	57	62
15 - 19	21618	134	10601	72	11017	62	62	68	56
20 - 24	18742	139	9019	80	9723	59	74	89	61
25 - 29	17728	129	8612	81	9116	48	73	94	53
30 - 34	13439	121	7236	73	6203	48	90	101	77
35 - 39	11042	146	5771	85	5271	61	132	147	116
40 - 44	8480	126	4652	82	3828	44	149	176	115
45 - 49	5826	91	3116	50	2710	41	156	160	151
50 - 54	5023	80	2476	41	2547	39	159	166	153
55 - 59	2489	63	1185	34	1304	29	253	287	222
60 - 64	3449	106	1596	50	1853	56	307	313	302
65 - 69	1925	69	863	29	1062	40	358	336	377
70 - 74	1844	89	844	40	1000	49	483	474	490
75+	2432	166	932	62	1500	104	683	665	693

Figure 3.1: Distribution of Disability Rates by Sex and Age Group; Harari Region: 2007

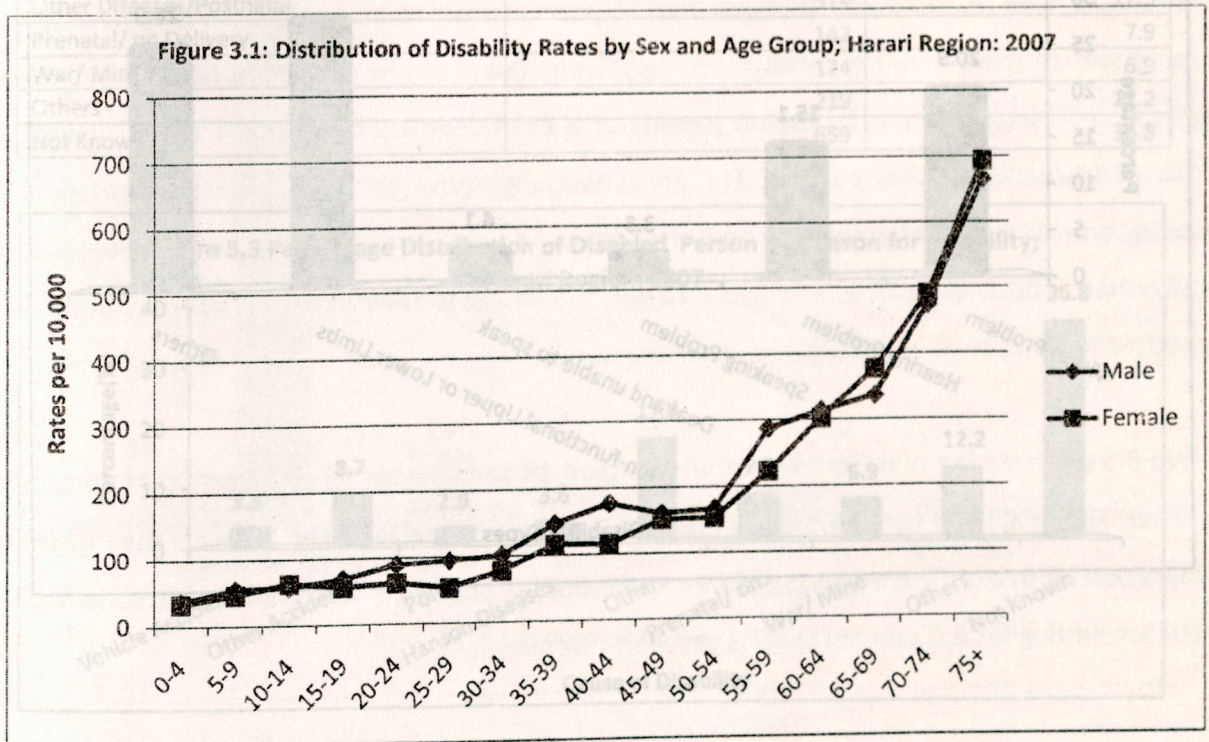


Table 3.2 and Figure 3.1 show the size and rate of disability by sex and age group. As can be seen from Figure 3.1, disability among males was higher than that of females from 15-19 up to the age group 60-64. But in older ages starting from age group 50-54 the trend immediately steeper until 75+ and disability among females was higher than that of males having a continuous increase by age for both sexes.

Table 3.3 Percentage Distribution of Disabled Persons by Type of Disability; Harari Region: 2007

Types of Disability	Total Disabled Population	Percent
Total Disabled	1790	100.0
Vision Problem	374	20.9
Hearing Problem	270	15.1
Speaking Problem	59	3.3
Deaf and unable to speak	73	4.1
Non-functional Upper or Lower Limbs (Gripping, Handling, Standing, Walking)	533	29.8
Others	481	26.9

Figure 3.2 Percentage Distribution of Disabled Persons by Types of Disability; Harari Region: 2007

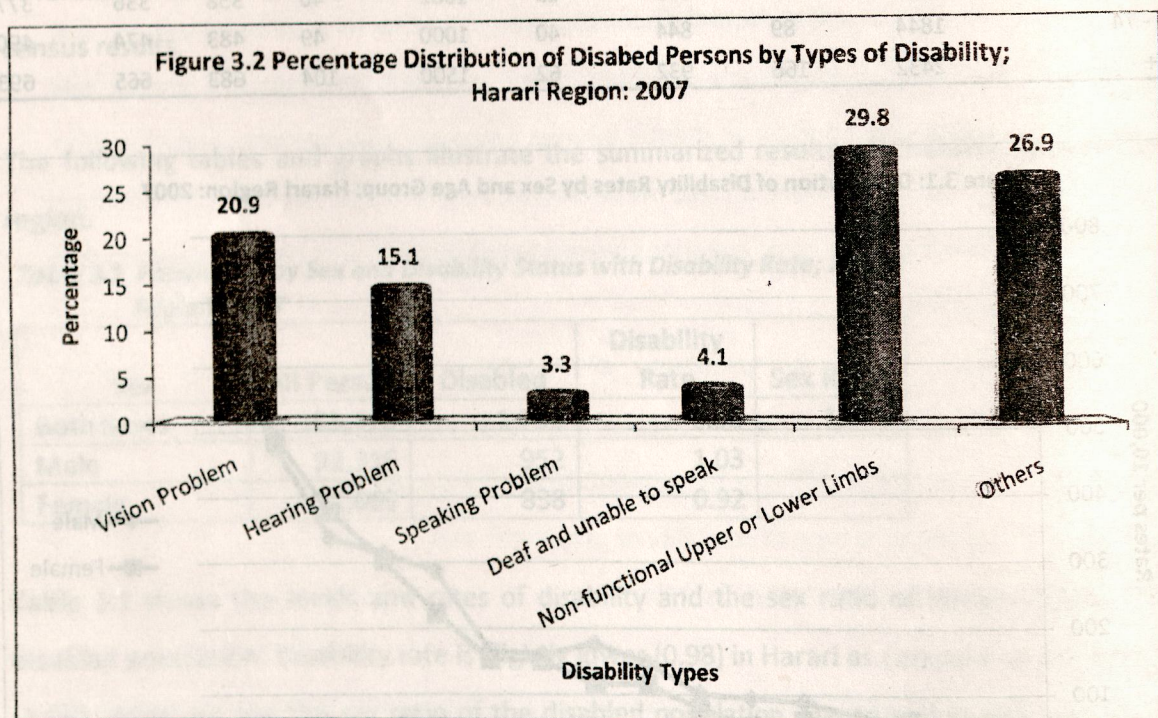


Table 3.3 and Figure 3.2 present data on disabled population by type of disability for Harari region. According to the results in the table, Harari region recorded lower disability types of Vision problem, as compared to the country total average it is less by 10 percent, that is 20.9 percent for Harari and 30.9 percent for country level. But Harari region recorded higher disability types of hearing problem compared to average country level, which accounts for 15.1 percent and 12.5 percent, respectively. Figure 3.2 illustrates the major types of disability at Harari region. As shown in the figure, three major types of disabilities were accounted for more than 70 percent of the total disability types. The highest disability type (about 29.8 percent) was difficulty of Non-functional Upper or Lower Limbs followed by vision problem (20.9 percent). Disability types which were not clearly identified and categorized as "Others" accounted for 26.9 percent of the total disability.

Table 3.4 Percentage Distribution of Disabled Persons by Cause of Disability; Harari Region: 2007

Region/Cause of Disability	Total Disabled Population	Percent
Harari	1,790	100
Vehicle Accidents	59	3.3
Other Accident	156	8.7
Polio	52	2.9
Hanson Diseases	65	3.6
Other Diseases/Postnatal	314	17.5
Prenatal/ on Delivery	142	7.9
War/ Mines	124	6.9
Others	219	12.2
Not Known	659	36.8

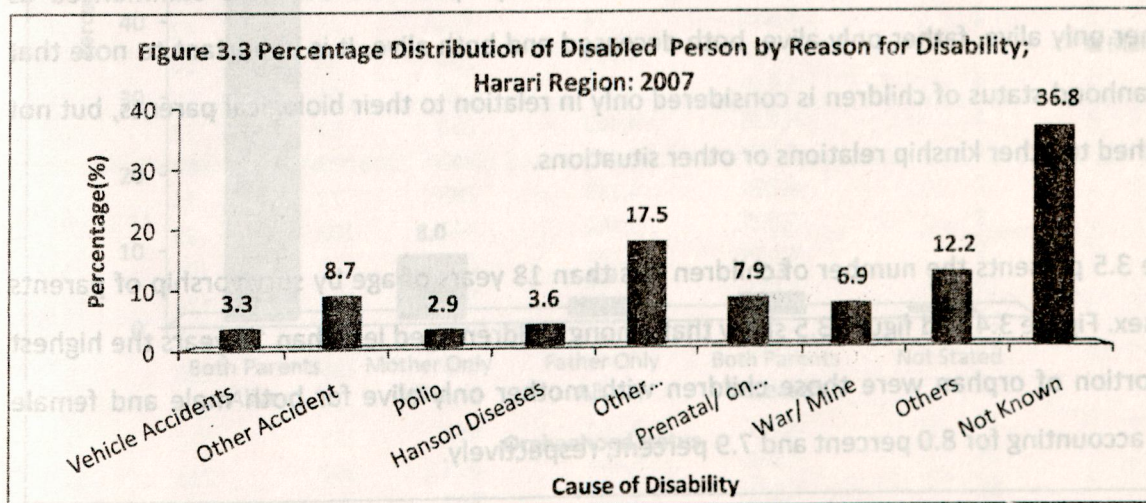


Table 3.4 and Figure 3.3 show that in Harari region about 37 percent of the causes of disability were not known. Of those known, postnatal or other diseases was the major cause of disability. More than 17 percent of the disabled respondents reported postnatal or other diseases as a cause of their disability. According to the 2007 census result, polio was said to be the least cause of disability in Harari region, accounting for 2.9 percent of the total cause of disability.

3.2 Orphanhood Status

The continuous increase in social problem due to orphanhood and the lists of topics suggested in the Principles and Recommendations for Population and Housing Census has brought an idea of collecting information on orphanhood in the 2007 Population and Housing Census. Accordingly, two basic questions on orphanhood status were administered to children under 18 years in the 2007 Population and Housing Census. These are:

- i. "Is (NAME's) biological mother alive?" and
- ii. "Is (NAME's) biological father alive?"

Using the answers for these two questions, children have been classified as orphaned or non-orphaned. Based on these, children less than 18 years are said to be orphaned if they have lost one or both of their parent(s) by death. Hence, Orphanhood can be defined as the condition of being a child without living biological parents or a child deprived by death of one or usually both of his/her biological parents. For presentation purpose the data are summarized as mother only alive, father only alive, both deceased and both alive. It is important to note that orphanhood status of children is considered only in relation to their biological parents, but not attached to other kinship relations or other situations.

Table 3.5 presents the number of children less than 18 years of age by survivorship of parents and sex. Figure 3.4 and figure 3.5 show that among children aged less than 18 years the highest proportion of orphan were those children with mother only alive for both male and female each accounting for 8.0 percent and 7.9 percent, respectively.

Table 3.5 Proportion of Survivorship of Parents for Children less than 18 years of Age by Sex; Harari Region: 2007

Region	Children Under 18 Years of Age	Both Parents Alive	Mother Only Alive	Father Only Alive	Both Parents Deceased	Not Stated
Country Total						
Both Sexes	38,406,849	34,536,130	2,473,848	803,177	537,501	56,193
Male	19,696,850	17,728,852	1,258,016	405,771	271,965	32,246
Female	18,709,999	16,807,278	1,215,832	397,406	265,536	23,947
Harari						
Both Sexes	81,876	71,691	6,501	1,666	1,874	144
Male	41,553	36,393	3,328	797	959	76
Female	40,323	35,298	3,173	869	915	68

Figure 3.4 Percentage distribution of orphanhood Status of Male; Harari Region: 2007

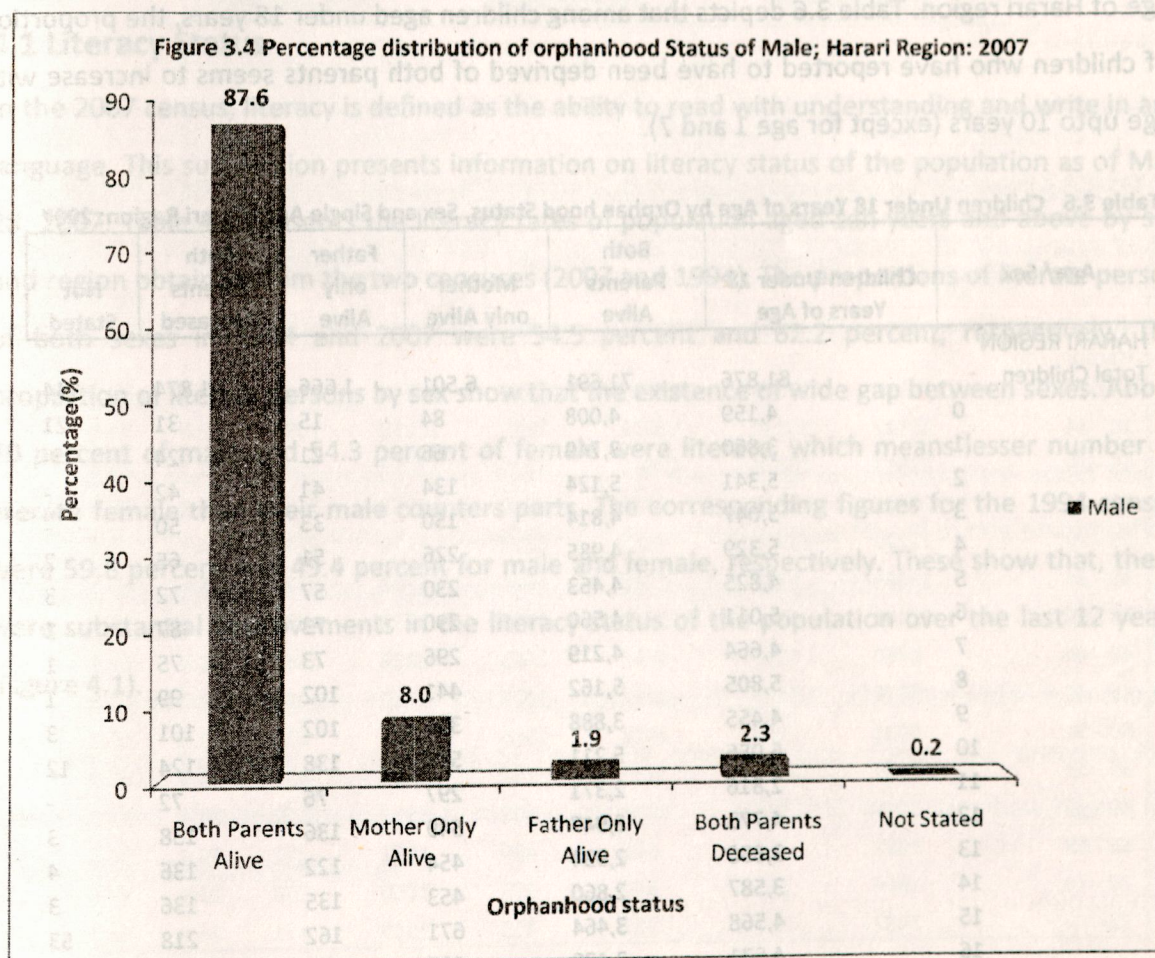


Figure 3.5 Percentage Distribution of Orphanhood Status of Female; Harari Region: 2007

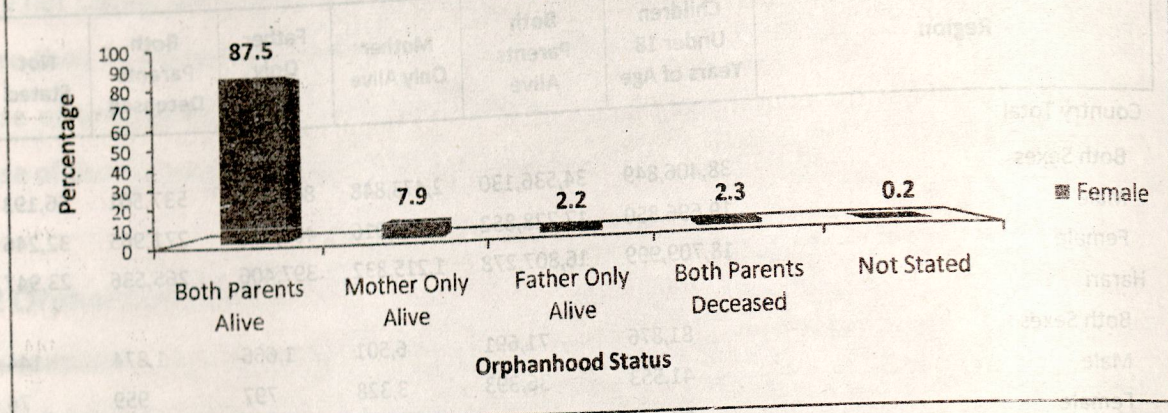


Table 3.6 presents children under 18 years of age by orphanhood status, sex and single year age of Harari region. Table 3.6 depicts that among children aged under 18 years, the proportion of children who have reported to have been deprived of both parents seems to increase with age upto 10 years (except for age 1 and 7).

Table 3.6 Children Under 18 Years of Age by Orphan hood Status, Sex and Single Age; Harari Region: 2007

Age/ Sex	Children Under 18 Years of Age	Both Parents Alive	Mother only Alive	Father only Alive	Both Parents Deceased	Not Stated
HARARI REGION						
Total Children	81,876	71,691	6,501	1,666	1,874	144
0	4,159	4,008	84	15	31	21
1	3,860	3,749	66	21	24	-
2	5,341	5,124	134	41	42	-
3	5,047	4,814	150	33	50	-
4	5,329	4,985	226	51	65	2
5	4,825	4,463	230	57	72	3
6	5,011	4,560	290	73	87	1
7	4,664	4,219	296	73	75	1
8	5,805	5,162	441	102	99	1
9	4,455	3,888	361	102	101	3
10	6,056	5,211	571	138	124	12
11	2,816	2,371	297	76	72	-
12	4,773	3,947	549	136	138	3
13	3,650	2,934	454	122	136	4
14	3,587	2,860	453	135	136	3
15	4,568	3,464	671	162	218	53
16	4,571	3,470	697	189	209	6
17	3,359	2,462	531	140	195	31

SECTION IV

EDUCATIONAL CHARACTERISTICS

This chapter discusses the educational characteristics of the population of Harari region based on the 2007 Population and Housing Census results. In this census, three questions regarding education and literacy status were asked: these are status of school attendance, educational attainment and literacy status. The summary results attempt to provide information on school attendance and literacy status of the population obtained from the 2007 PHC along with the results of the 1994 census to facilitate comparisons in order to be able to understand the changes that have been occurred over the elapsed period of time.

4.1 Literacy Status

In the 2007 census, literacy is defined as the ability to read with understanding and write in any language. This sub-section presents information on literacy status of the population as of May 28, 2007. Table 4.1 presents the literacy rates of population aged ten years and above by sex and region obtained from the two censuses (2007 and 1994). The proportions of literate person of both sexes in 1994 and 2007 were 54.5 percent and 62.2 percent, respectively. The proportion of literate persons by sex show that the existence of wide gap between sexes. About 70 percent of male and 54.3 percent of female were literate, which means lesser number of literate female than their male counterparts. The corresponding figures for the 1994 census were 59.8 percent and 49.4 percent for male and female, respectively. These show that, there were substantial improvements in the literacy status of the population over the last 12 years (Figure 4.1).

Year	Male	Female	Both sexes
2007	70.0	54.3	62.2
1994	59.8	49.4	54.5

Table 4.1 Percentage Distribution of Literate Population aged 10 Years and above by Sex and Census Period; Harari Region: 1994 & 2007

Region/Sex	Percent Literate 2007		Percent Literate 1994	
Harari	62.2		54.5	
Both sexes	62.2		54.5	
Male	70.1		59.8	
Female	54.3		49.4	

Figure 4.1 Percentage Distribution of Literate Persons by Sex and Census Period; Harari Region: 1994 & 2007

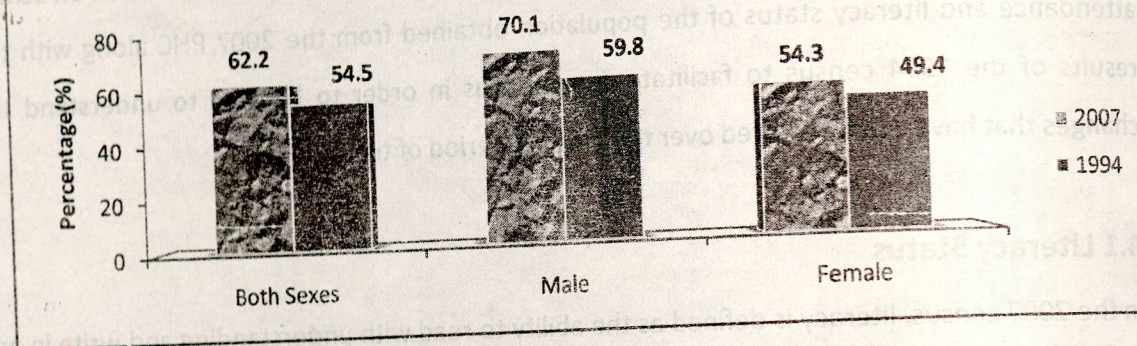


Table 4.2 Population 10 Years old and above by literacy rates, sex and Age Group; Harari Region: 2007

Age Group	Both sexes		Male		Female		Percent Literate		
	All Persons	Literate Persons	All Males	Literate Males	All Females	Literate Female	Both Sexes	Male	Female
Harari Region	134919	83948	67575	47392	67344	36556	62.2	70.1	54.3
10 - 14	20882	15036	10672	7945	10210	7091	72.0	74.4	69.5
15 - 19	21618	16024	10601	8524	11017	7500	74.1	80.4	66.1
20 - 24	18742	12513	9019	6900	9723	5613	66.8	76.5	57.7
25 - 29	17728	11466	8612	6222	9116	5244	64.7	72.2	57.5
30 - 34	13439	8274	7236	5001	6203	3273	61.6	69.1	52.8
35 - 39	11042	6732	5771	3976	5271	2756	61.0	68.9	52.3
40 - 44	8480	4561	4652	2903	3828	1658	53.8	62.4	43.3
45 - 49	5826	3130	3116	1928	2710	1202	53.7	61.9	44.4
50 - 54	5023	2192	2476	1365	2547	827	43.6	55.1	32.5
55 - 59	2489	1146	1185	722	1304	424	46.0	60.9	32.5
60 - 64	3449	980	1596	608	1853	372	28.4	38.1	20.1
65 - 69	1925	758	863	486	1062	272	39.4	56.3	25.6
70 - 74	1844	552	844	399	1000	153	29.9	47.3	15.3
75+	2432	584	932	413	1500	171	24.0	44.3	11.4

Figure 4.2 Percentage Distribution of Literacy Rates by Sex and Age Group; Harari Region: 2007

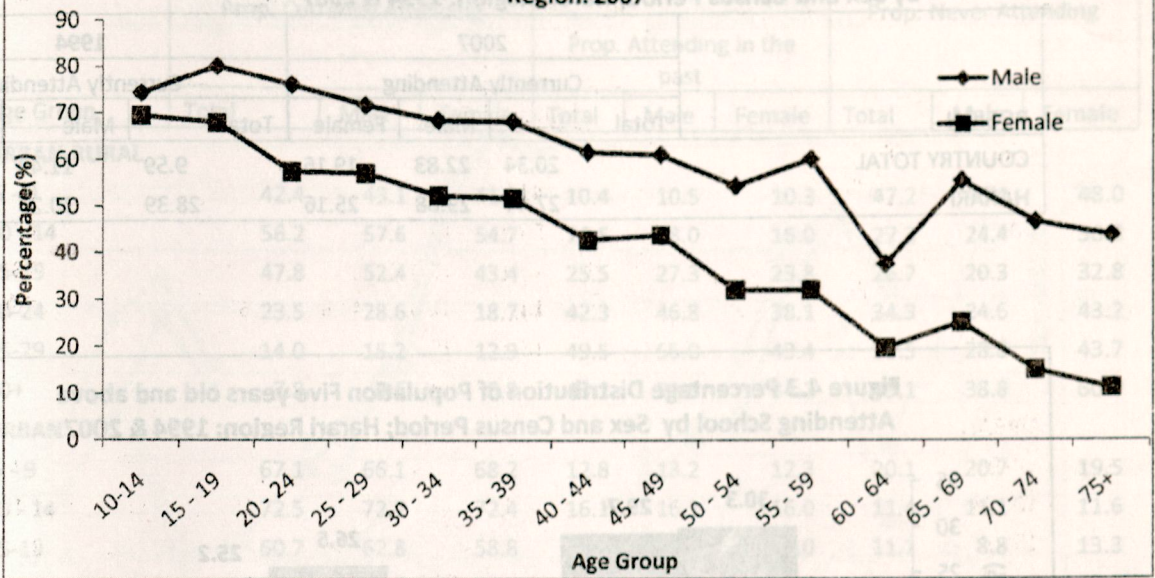


Table 4.2 and figure 4.2 presents the percentage distribution of literate population by age group. The data shows that the literacy status varies by age. That is, for both sexes literacy rates declines as age increases starting from age group 15-19 up to 75+ except for age groups 55-59 and 65-69.

4.2 School Attendance

Household members aged five years and above in the sample household were asked about status of their school attendance i.e., whether they were attending school during enumeration period, attended in the past or have never attended any formal education.

As can be seen from Table 4.3, in 2007 the proportion of current school attendance in Harari region has decreased as compared to the 1994 census results. Figure 4.2 presents the proportions of school attendance during enumeration in 2007 PHC were somehow higher for both Sexes than in 1994 census.

Table 4.3: Percentage Distribution of Population Five Years old and above currently attending School by Sex and Census Period; Harari Region: 1994 & 2007

REGION	2007			1994		
	Currently Attending			Currently Attending		
	Total	Male	Female	Total	Male	Female
COUNTRY TOTAL	20.34	22.83	19.16	9.59	11.43	7.74
HARARI	27.44	29.68	25.16	28.39	30.28	26.52

Figure 4.3 Percentage Distribution of Population Five years old and above Attending School by Sex and Census Period; Harari Region: 1994 & 2007

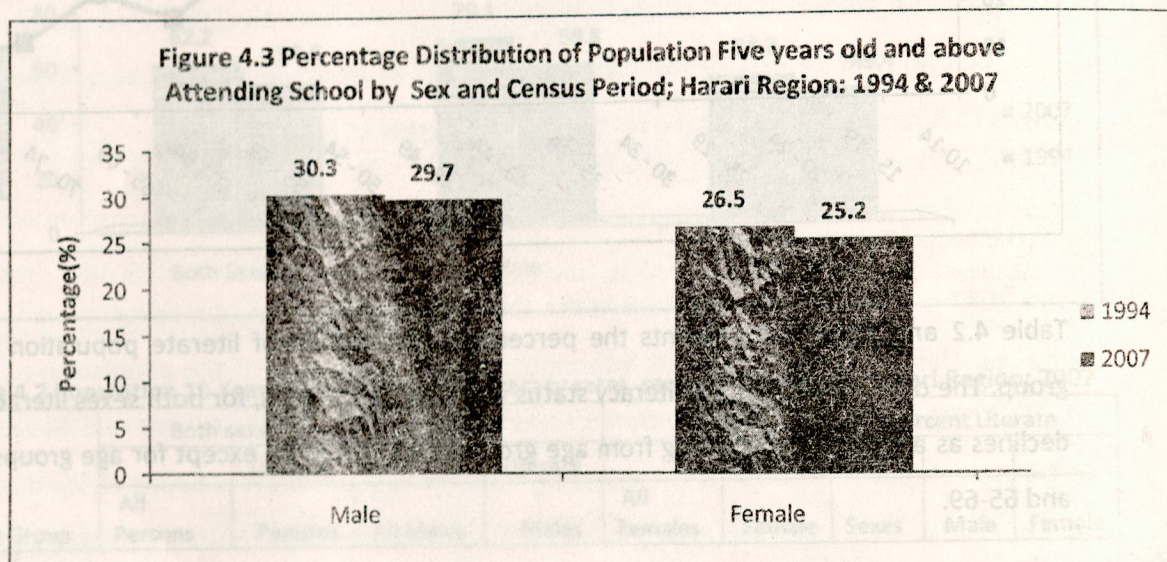


Table 4.4 presents the distributions of the population by status of school attendance and place of residence. And Figure 4.3a shows the proportions of currently attending declines as age increases, starting from age group 10-14 both for urban and rural as well as for both sexes.

The proportions of urban population who had attended school in the past were almost the same for males and females up to age group 25-29, but higher for males in rural areas except at early age of 5-9 years.

The proportions of never Attended were significantly higher in rural area than in urban for both sexes. Figure 4.3c depicts the proportion of never attended male population increases with the advance of age starting from age group 10-14.

Table 4.4 Percentage Distribution of Population Five Years old and above by Status of School Attendance and Sex; Harari Region: 2007

Age Group	Prop. Currently Attending			Prop. Attending in the past			Prop. Never Attending		
	Total	Male	Female	Total	Male	Female	Total	Male	Female
URBAN-RURAL									
5 - 9	42.4	43.1	41.7	10.4	10.5	10.3	47.2	46.4	48.0
10 - 14	56.2	57.6	54.7	16.5	18.0	15.0	27.3	24.4	30.3
15-19	47.8	52.4	43.4	25.5	27.3	23.8	26.7	20.3	32.8
20-24	23.5	28.6	18.7	42.3	46.8	38.1	34.3	24.6	43.2
25-29	14.0	15.2	12.9	49.5	56.0	43.4	36.5	28.8	43.7
30+	7.8	9.6	5.8	43.1	51.6	34.2	49.1	38.8	60.0
URBAN									
5 - 9	67.1	66.1	68.2	12.8	13.2	12.3	20.1	20.7	19.5
10 - 14	72.5	72.7	72.4	16.1	16.1	16.0	11.4	11.1	11.6
15-19	60.7	62.8	58.8	28.2	28.4	28.0	11.1	8.8	13.3
20-24	31.5	35.4	27.8	54.9	55.9	53.9	13.6	8.7	18.3
25-29	18.9	19.5	18.3	65.7	69.9	61.6	15.4	10.6	20.2
30+	10.8	13.0	8.5	59.7	69.5	49.6	29.5	17.5	41.9
RURAL									
5 - 9	26.1	28.4	23.6	8.8	8.7	9.0	65.1	62.9	67.4
10 - 14	41.4	45.0	37.4	16.9	19.6	14.0	41.6	35.4	48.6
15-19	28.1	37.2	18.9	21.5	25.7	17.3	50.4	37.1	63.8
20-24	9.5	16.1	3.7	20.4	30.3	11.9	70.1	53.7	84.4
25-29	5.2	6.8	3.9	20.5	28.9	13.4	74.2	64.4	82.6
30+	2.9	4.3	1.5	16.2	23.0	8.9	80.8	72.7	89.6

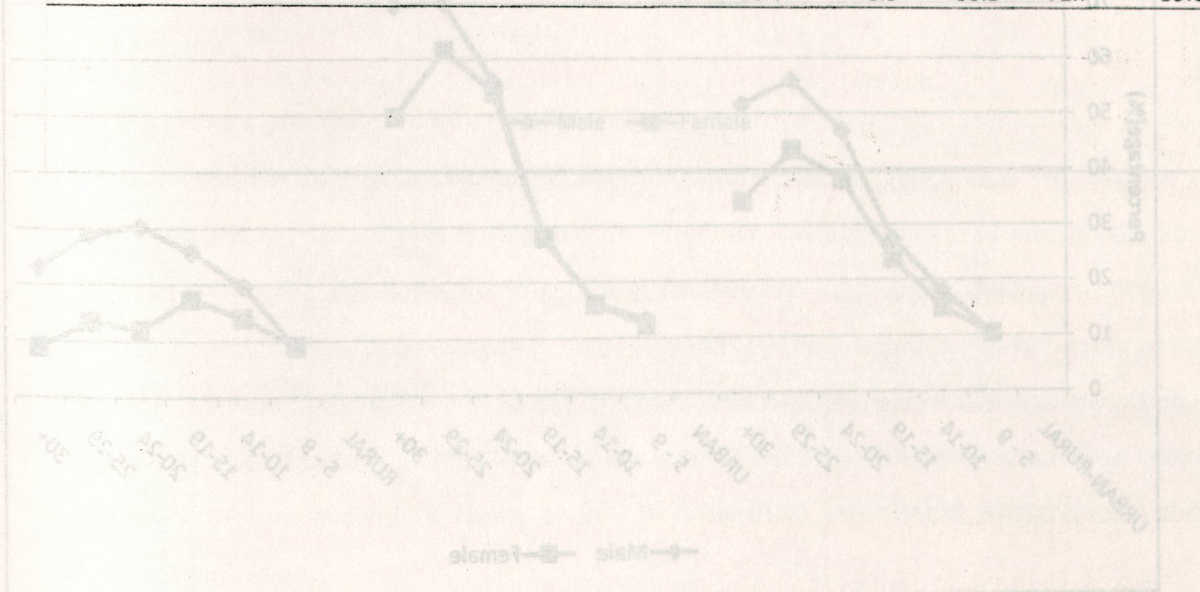


Figure 4.3a: Percentage Distribution of Population Five years old and over by Currently Attending School, Sex and Age Group; Harari Region: 2007

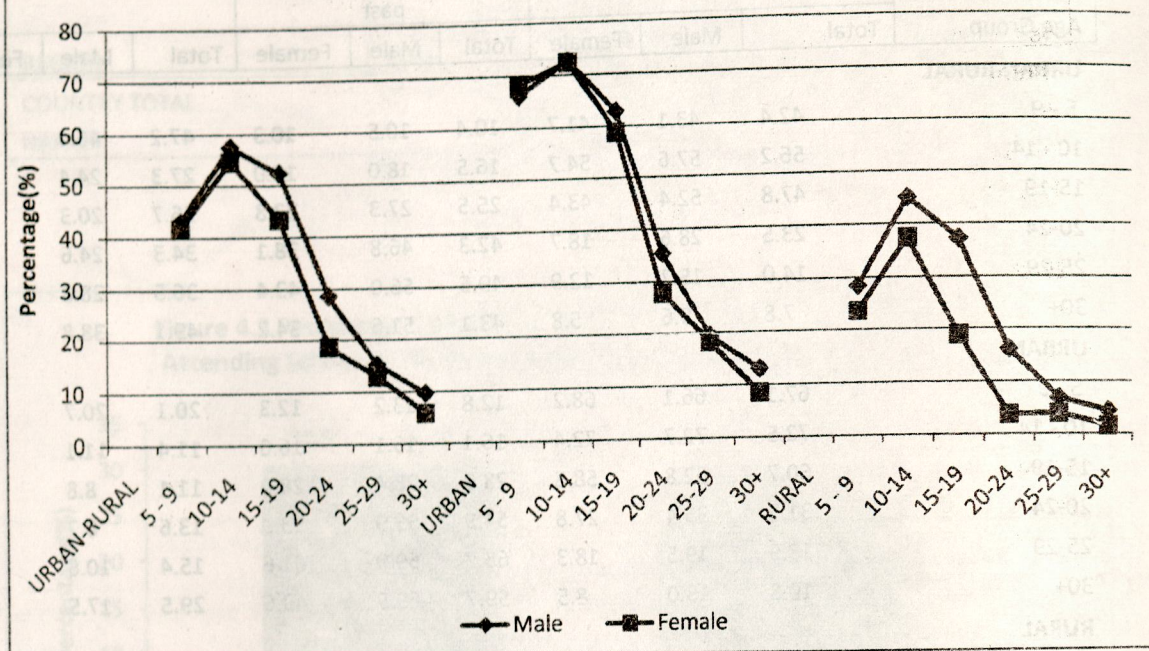


Figure 4.3b: Percentage Distribution of Population Five years old and over by School Attending in the past, Sex and Age Group; Harari Region: 2007

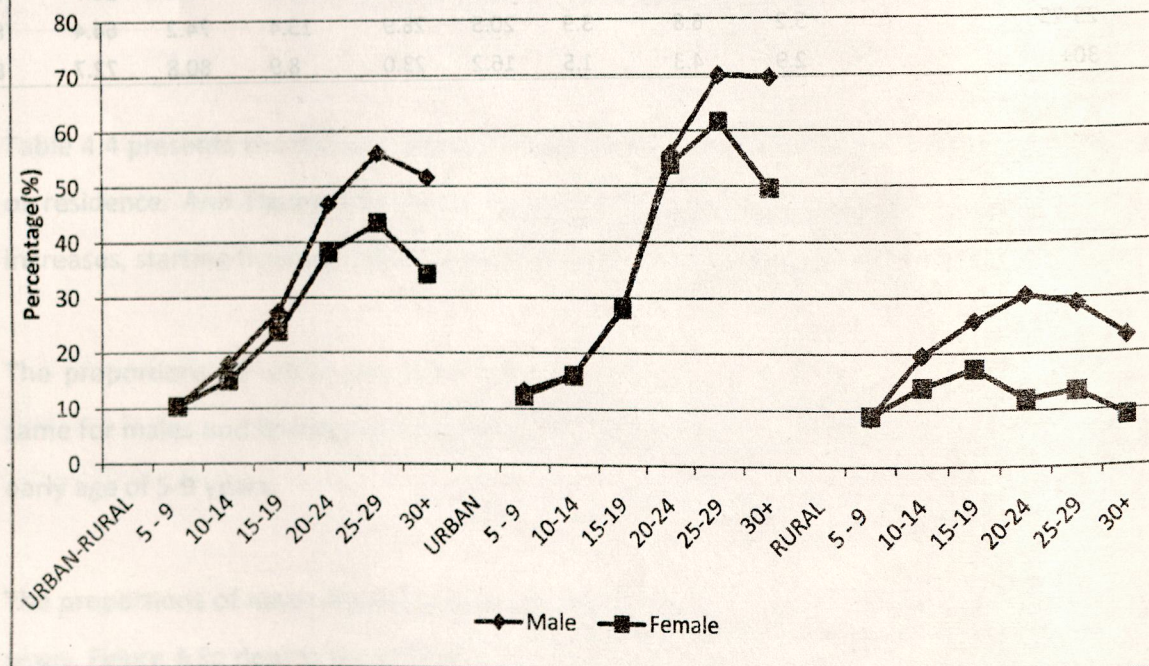


Figure 4.3c: Percentage Distribution of population Five years old and over by Never Attended School, Sex and Age Group; Harari Region: 2007

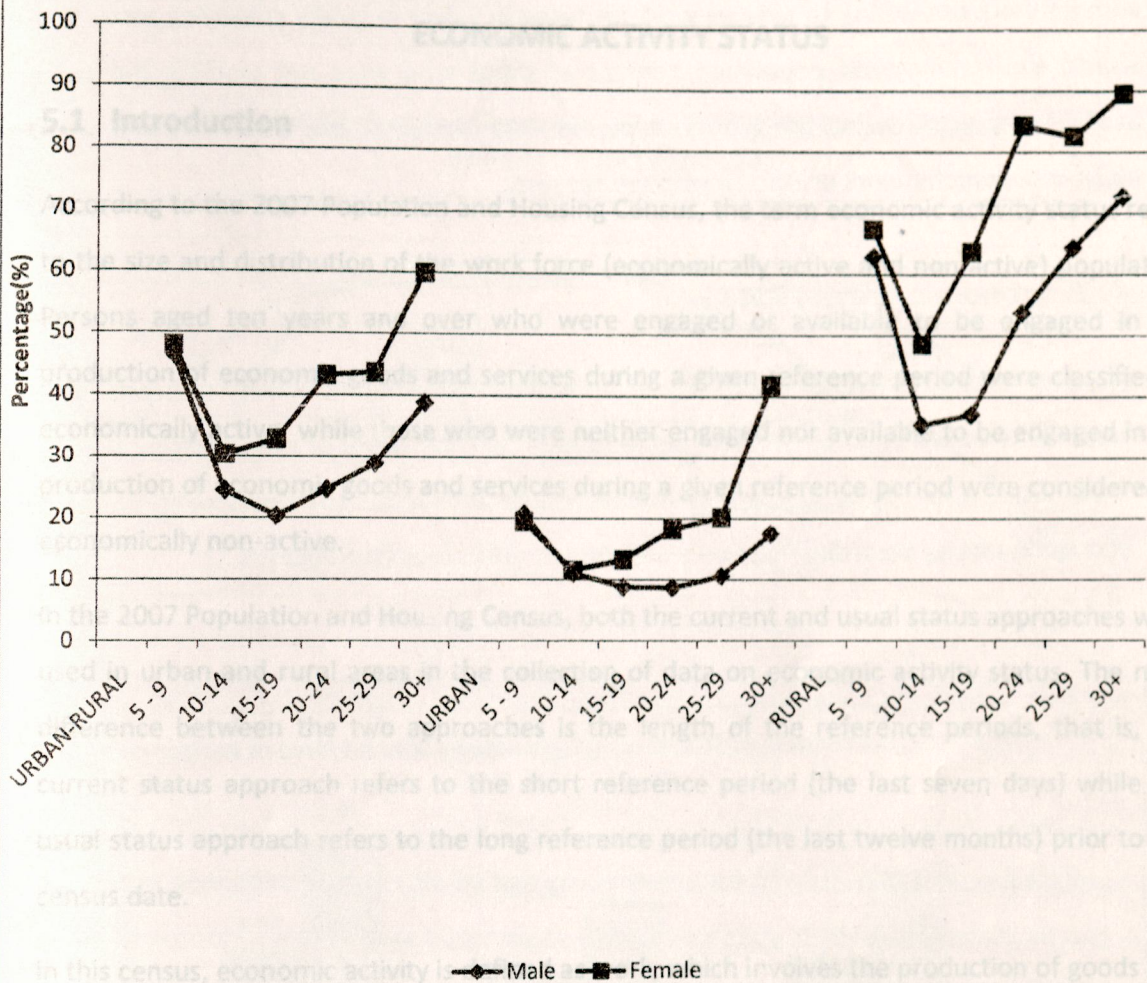
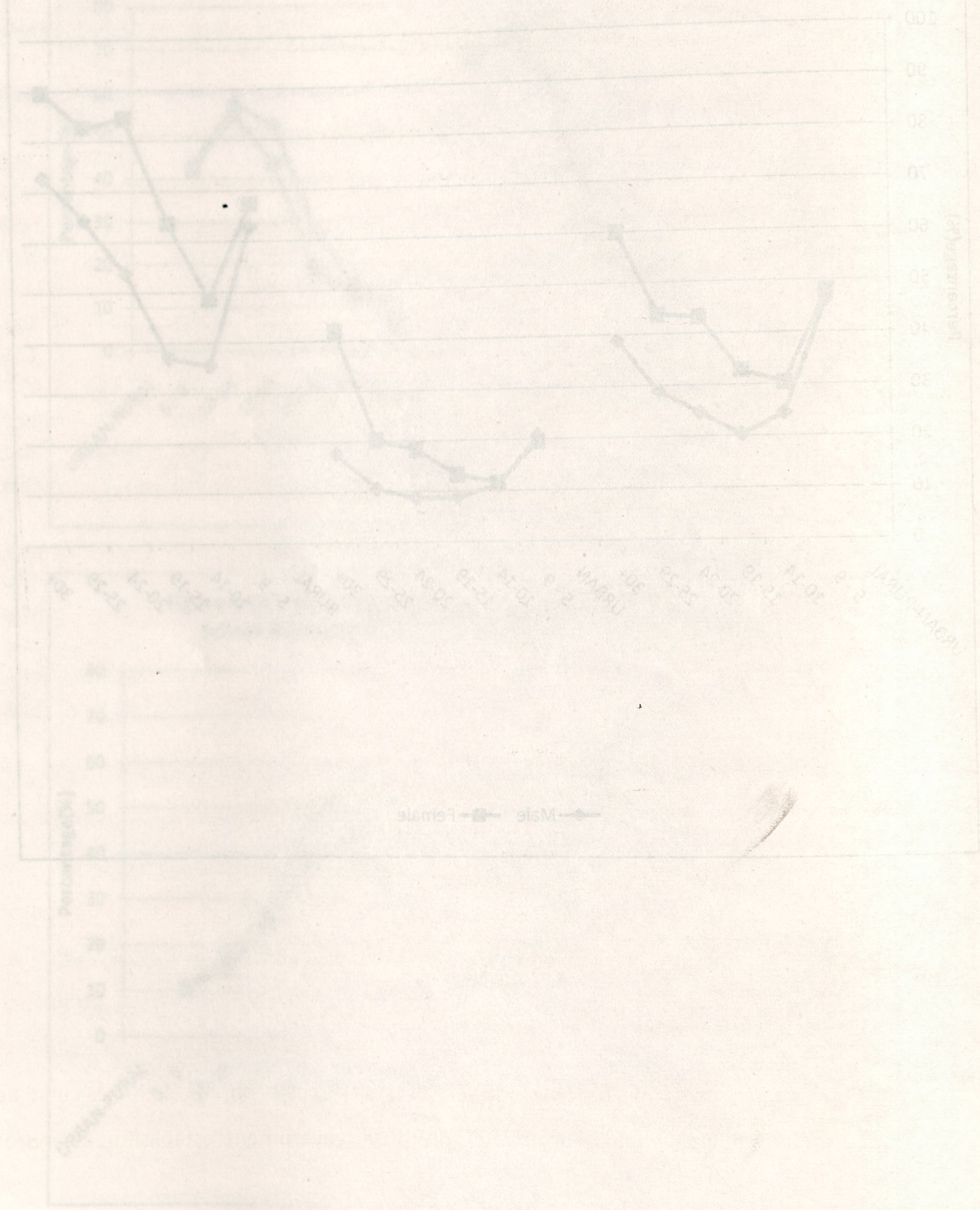


Figure 4.3c: Percentage Distribution of population five years old and over by Never Attended School, Sex and age Group, Harari Region, 2007



SECTION V

ECONOMIC ACTIVITY STATUS

5.1 Introduction

According to the 2007 Population and Housing Census, the term economic activity status refers to the size and distribution of the work force (economically active and non active) population. Persons aged ten years and over who were engaged or available to be engaged in the production of economic goods and services during a given reference period were classified as economically active, while those who were neither engaged nor available to be engaged in the production of economic goods and services during a given reference period were considered as economically non-active.

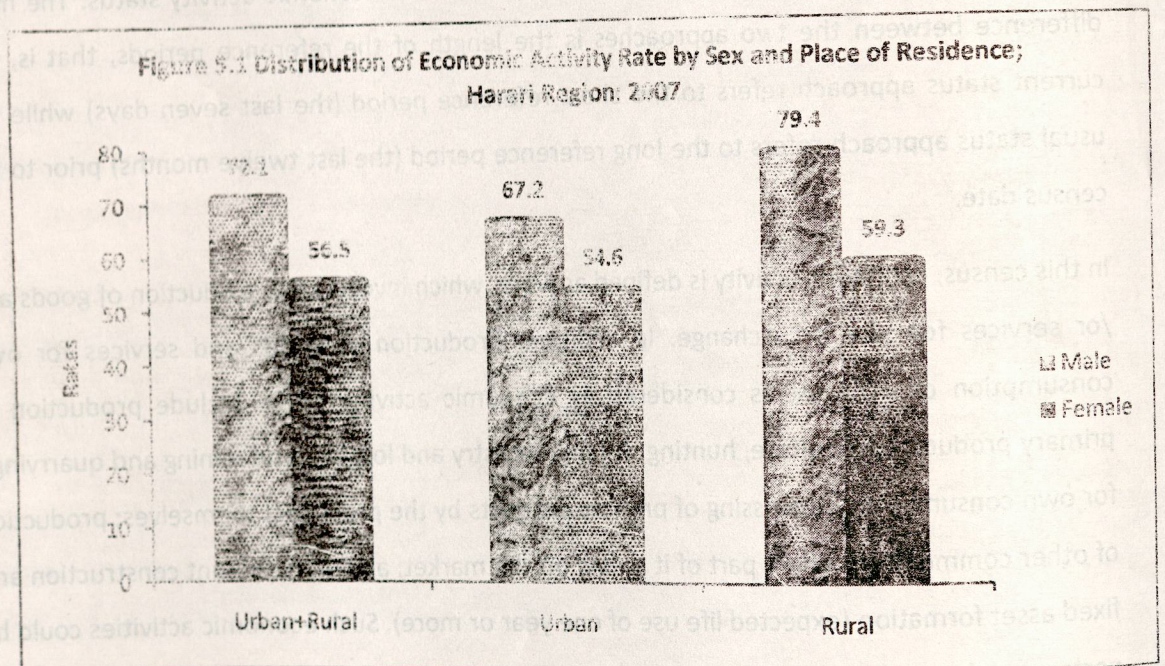
In the 2007 Population and Housing Census, both the current and usual status approaches were used in urban and rural areas in the collection of data on economic activity status. The main difference between the two approaches is the length of the reference periods, that is, the current status approach refers to the short reference period (the last seven days) while the usual status approach refers to the long reference period (the last twelve months) prior to the census date.

In this census, economic activity is defined as work, which involves the production of goods and /or services for sale or exchange. In addition, production of goods and services for own consumption or own use is considered as economic activity. These include production of primary products (agriculture, hunting, fishing, forestry and logging, and mining and quarrying), for own consumption; processing of primary products by the producers themselves; production of other commodities where part of it is sold on the market; and own account construction and fixed asset formation (expected life use of one year or more). Such economic activities could be performed for an individual, family or private enterprise, government establishment and/or social organization.

For generating data on unemployment, an option of the completely relaxed which is based on both seeking and availability criteria of unemployment definition is used in the 2007 Population and Housing Census. The completely relaxed definition of unemployment refers to persons without work but willing to take up work for wage or salary in locally prevailing term. In other words, the unemployed population consists of those who were not working but currently available for work during the reference period. This includes those who were and were not actively seeking for work or discouraged job seekers.

5.2 Economic Activity Rate

The 2007 census results of Harari region show that the economic activity rate was higher in rural areas where most persons are self-employed in their farms or other activity than in the urban areas where some specialized skills are required for access to employment. Disparities in economic activity according to sex are wide in the rural areas (See Figure 5.1).



During the 2007 census, about six persons out of ten in the economically active age were recorded as having been economically active during the reference period considered. In general, in Harari region men were found to be more economically active than women (72.1 percent against 56.5 percent) (See Figure 5.1).

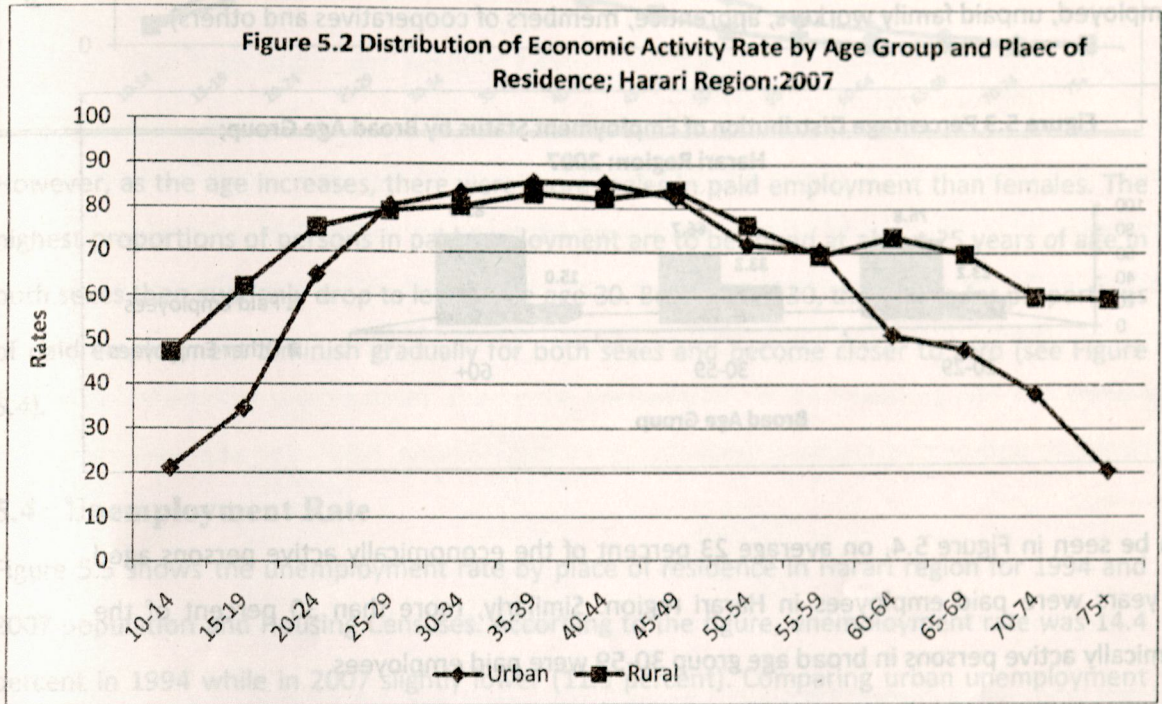
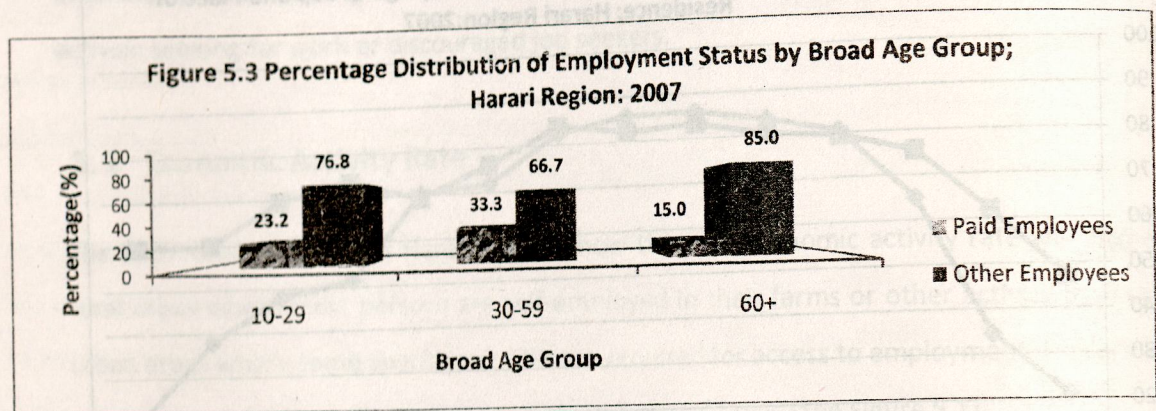


Figure 5.2 shows economic activity rate by age group and place of residence in Harari region. Participation in economic activity was observed to start rather early in Harari especially among the rural children, where above four out of every ten of them were already active at age 10 years whereas two out of ten urban children. However, economic activity rates are found to increase rapidly with age for both rural and urban areas such that by age 25, about eight out of every ten rural and urban persons are economically active. These rates become higher up to age 45 for both urban and rural residents. After age 45 the proportions of urban economically active person gradually decline, whereas in rural area beyond age 55 the proportions of economically active person remain above 60 percent.

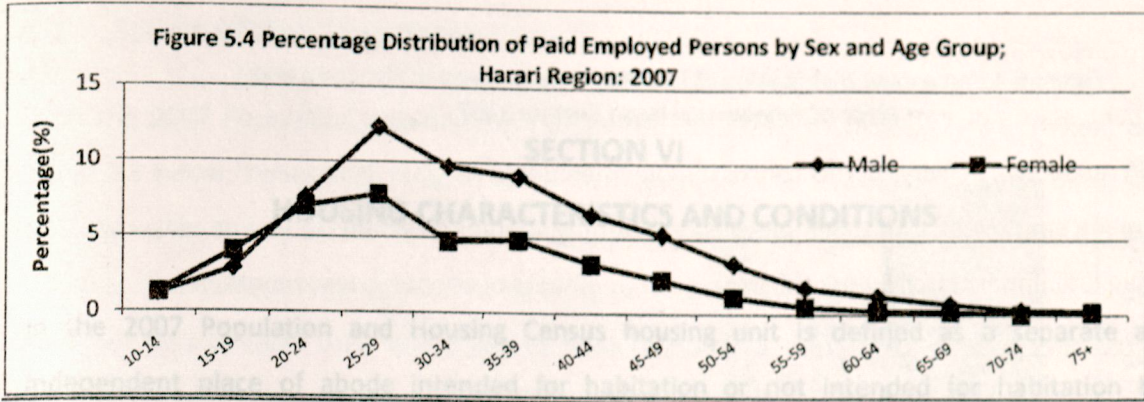
5.3 Employment Status

Employment status of a person indicates the level of involvement and degree of decision-making in respective activity. In this census, employment status is classified as paid employees (Government employees, NGO's employees and domestic employees) and other employees (self employed, unpaid family workers, apprentice, members of cooperatives and others).



As can be seen in Figure 5.4, on average 23 percent of the economically active persons aged 10-29 years were paid employees in Harari region. Similarly, more than 30 percent of the economically active persons in broad age group 30-59 were paid employees.

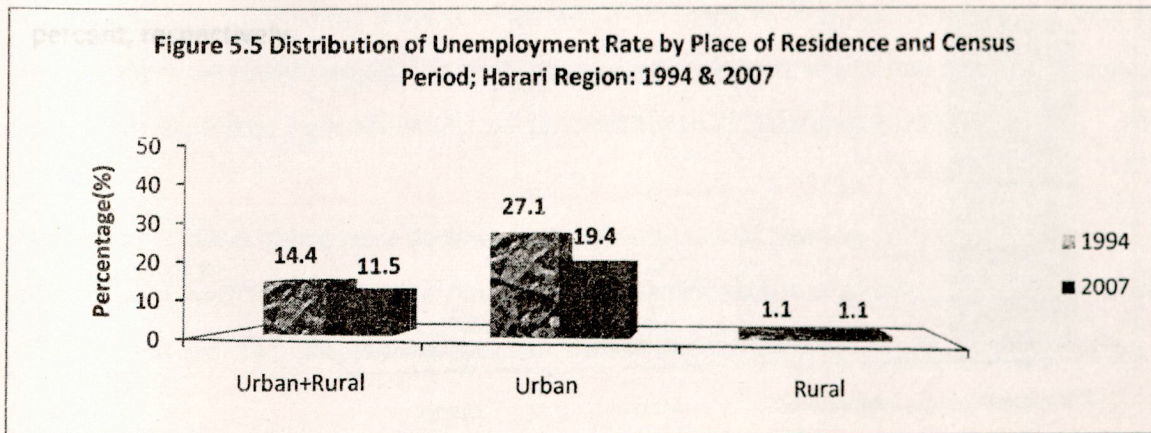
When one examines the case of all persons in paid employment, it is evident that at the young and old ages, though there are relatively fewer persons in paid employment, but there are high disparities among the sexes. That is proportionally young girls slightly higher than boys in paid employment before age 20 years (see Figure 5.4).

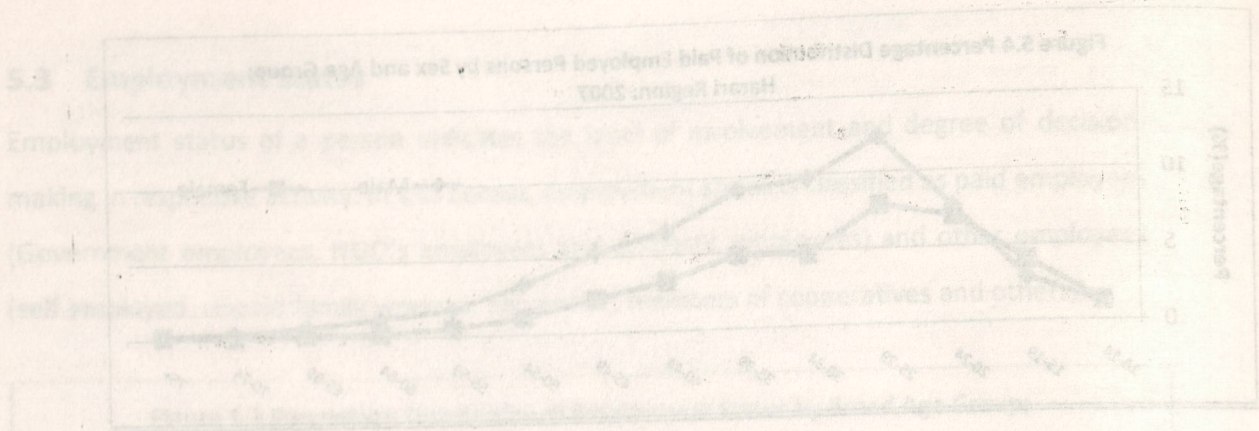


However, as the age increases, there were more males in paid employment than females. The highest proportions of persons in paid employment are to be found at about 25 years of age in both sexes then suddenly drop to lower rate age 30. Beyond age 30, the trends for proportions of paid employment diminish gradually for both sexes and become closer to zero (see Figure 5.4).

5.4 Unemployment Rate

Figure 5.5 shows the unemployment rate by place of residence in Harari region for 1994 and 2007 population and Housing Censuses. According to the figure, unemployment rate was 14.4 percent in 1994 while in 2007 slightly lower (11.5 percent). Comparing urban unemployment rate, it was 27.1 and 19.4 percent in 1994 and 2007 PHCs, respectively. When we see rural unemployment rate, it was the same (1.1 percent) in the two census rounds (1994 and 2007) (See figure 5.5).

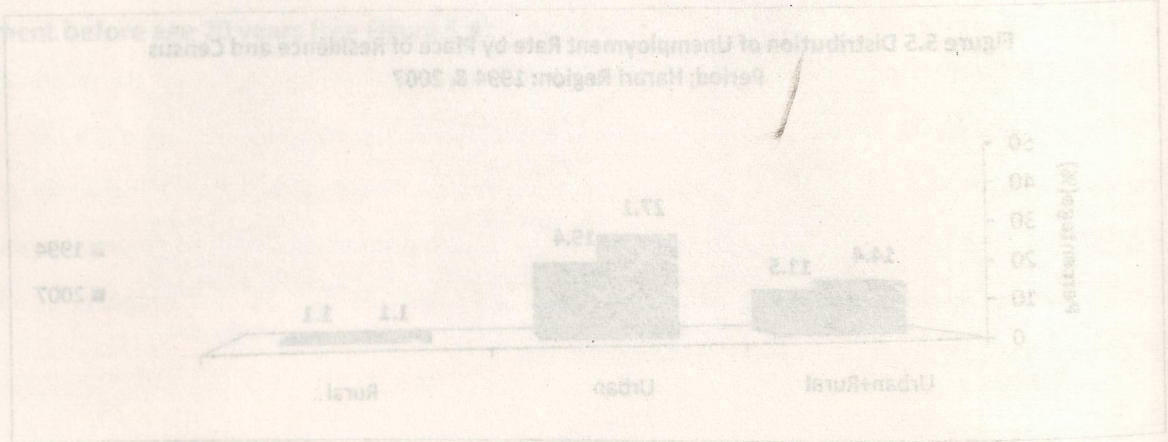




However, as the age increases, there were more males in paid employment than females. The highest proportions of persons in paid employment are to be found at about 45 years of age in both sexes (then suddenly drop to lower levels after age 50). Before age 30, the proportions of paid employment diminish gradually for both sexes and become closer to zero (see Figure 2.4).

2.4 Unemployment Rate

Figure 2.2 shows the unemployment rate by place of residence in Hanoi region for 1994 and 2007 population and Housing Censuses. According to the figure, unemployment rate was 14.4 percent in 1994 while in 2007 slightly lower (11.2 percent). Comparing urban unemployment rate, it was 27.1 and 19.4 percent in 1994 and 2007 PHCS respectively. When we see rural unemployment rate, it was the same (1.1 percent) in the two census rounds (1994 and 2007) (see figure 2.2).



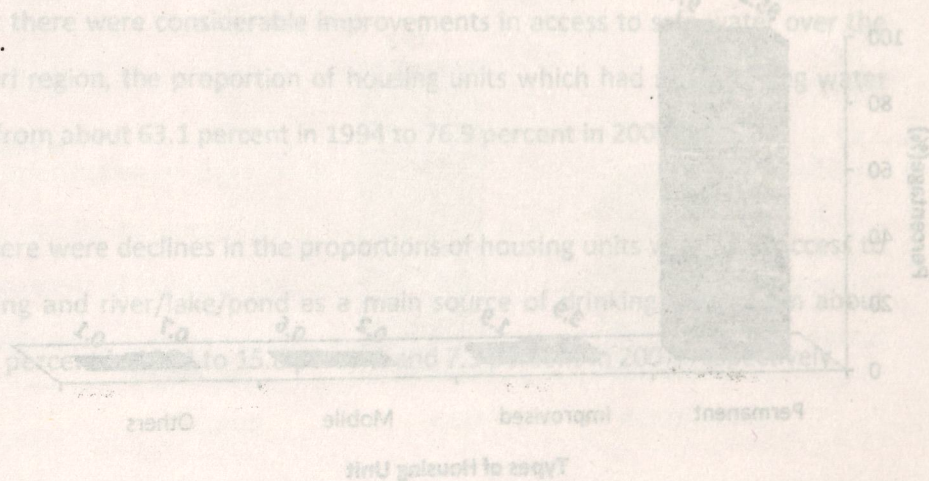
SECTION VI

HOUSING CHARACTERISTICS AND CONDITIONS

In the 2007 Population and Housing Census housing unit is defined as a separate and independent place of abode intended for habitation or not intended for habitation but occupied as a living quarter by a household at the time of the census. A housing unit may at the time of census be occupied by one or more households or may be used partly for living and partly for establishment. This definition of housing unit is consistent with the 1994 census. Housing information was collected for all occupied residential and partially residential housing units on 20 percent sample bases. During the enumeration, when a housing unit was occupied by more than one household, enumerators were instructed to collect information on housing from one household only.

6.1 Structural Type of Housing Units

As can be seen from Table 6.1 (See Annex) and Figure 6.1 the 2007 census results show that in Harari region 97.4 percent of housing units were permanent type. The corresponding figures for urban and rural areas were 96.2 percent and 99.4 percent, respectively. On the other hand, improvised, mobile and other type of housing unit constituted 1.9 percent, 0.6 percent and 0.1 percent, respectively.



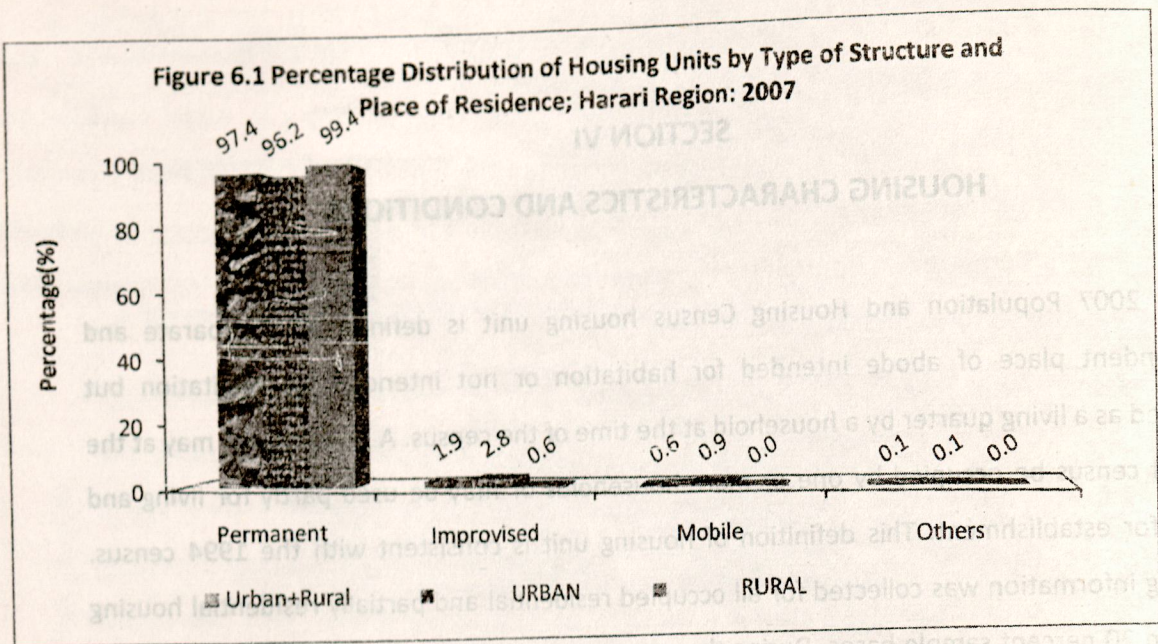
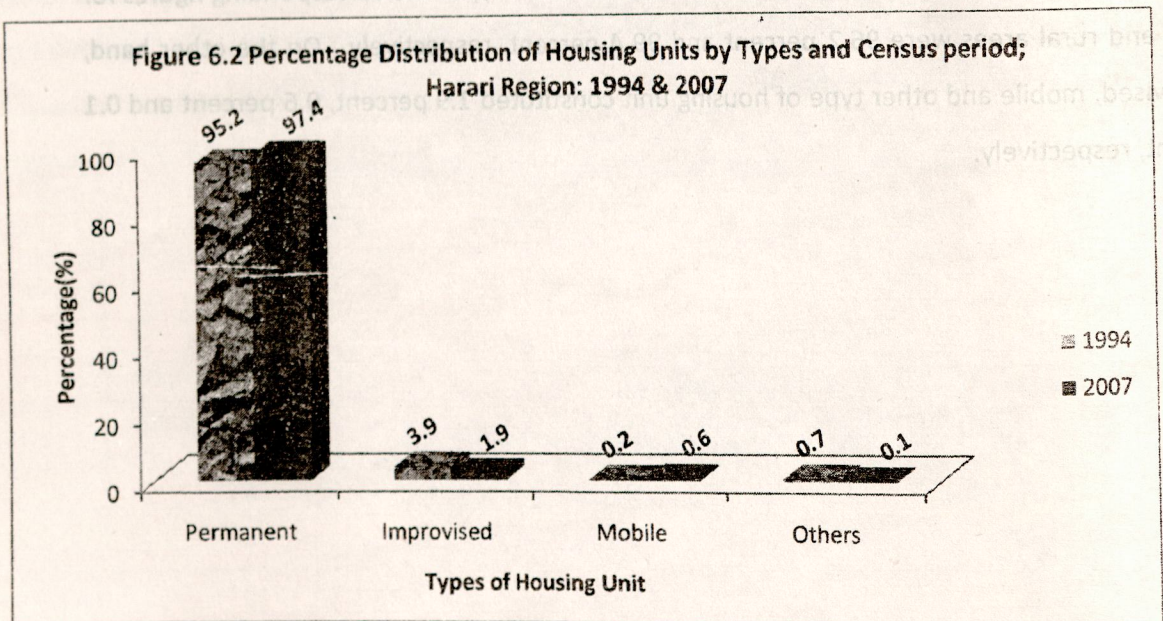
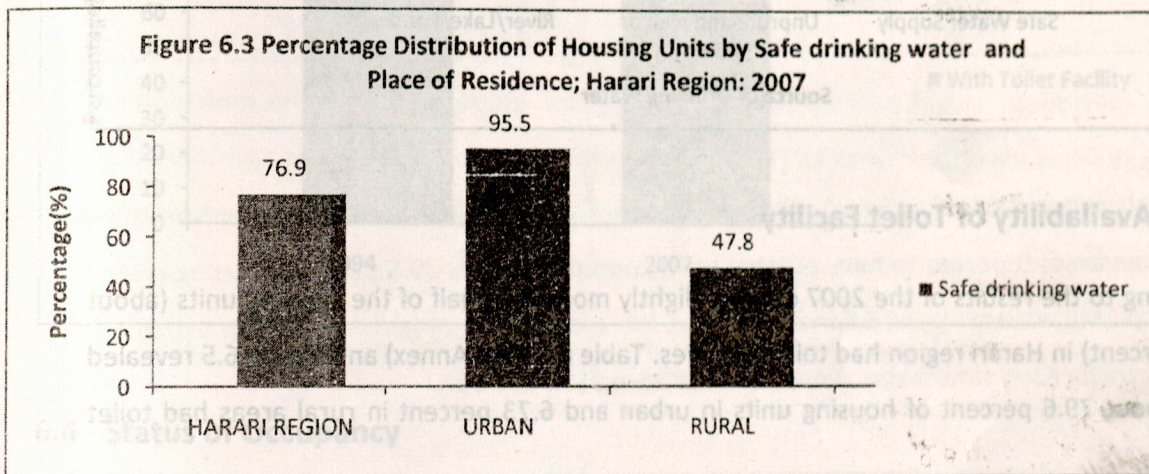


Figure 6.2 shows that the proportions of permanent housing units have changed over time increasing from 95.2 percent in 1994 to 97.4 percent in 2007. On the other hand, the proportions of improvised, mobile and other type of housing unit have changed from 3.9 percent, 0.2 percent and 0.7 percent in 1994 to 1.93 percent, 0.57 percent and 0.07 percent in 2007, respectively.



6.2 Source of Drinking Water

From the 2007 Population and Housing Census results shown in Table 6.2 (See Annex) and Figure 6.3 below, households living in about 76.9 percent of the housing units were using safe drinking water supply as the main source of drinking water in Harari region. Table 6.2 also indicates that in Harari region households living in urban housing units were much more likely (95.5 percent) to have used safe water as a main source of drinking water as compared to households living in rural housing units (47.8 percent).

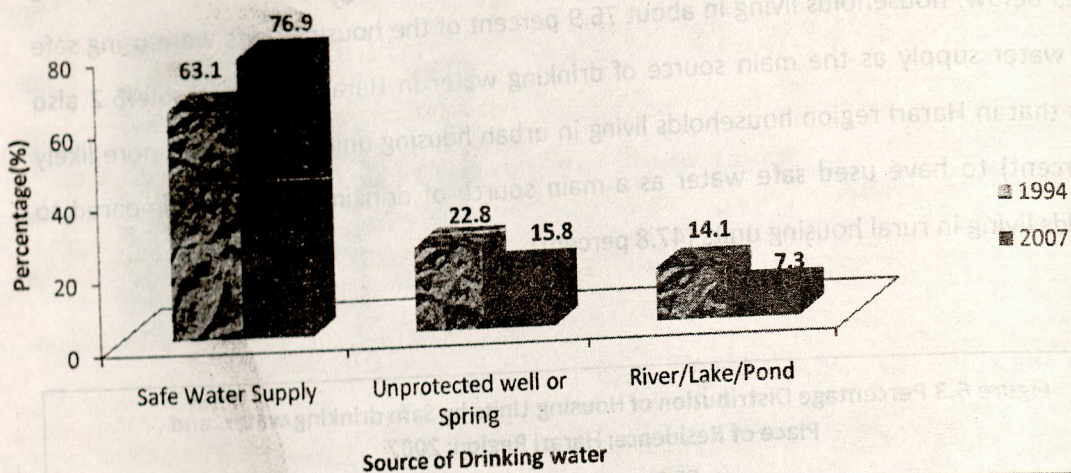


NB – Safe drinking water includes Tap inside the house, in compound private/shared, Tap outside compound and Protected well/spring.

Figure 6.4 shows that there were considerable improvements in access to safe water over the last 12 years. In Harari region, the proportion of housing units which had safe drinking water facility has increased from about 63.1 percent in 1994 to 76.9 percent in 2007.

On the other hand, there were declines in the proportions of housing units which had access to unprotected well/spring and river/lake/pond as a main source of drinking water from about 22.8 percent and 14.1 percent in 1994 to 15.8 percent and 7.3 percent in 2007, respectively.

Figure 6.4 Percentage Distribution of Housing Units by Source of drinking water and census Period; Harari Region: 1994 & 2007



6.3 Availability of Toilet Facility

According to the results of the 2007 census, slightly more than half of the housing units (about 51.2 percent) in Harari region had toilet facilities. Table 6.3 (See Annex) and Figure 6.5 revealed that, about 79.6 percent of housing units in urban and 6.73 percent in rural areas had toilet facilities.

Figure 6.5 Percentage Distribution of Housing Units With Toilet Facility and Place of Residence; Harari Region: 2007

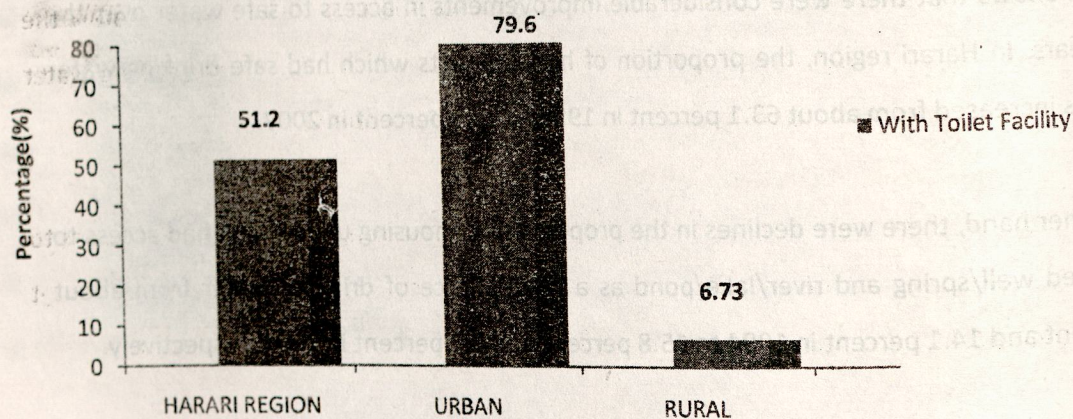
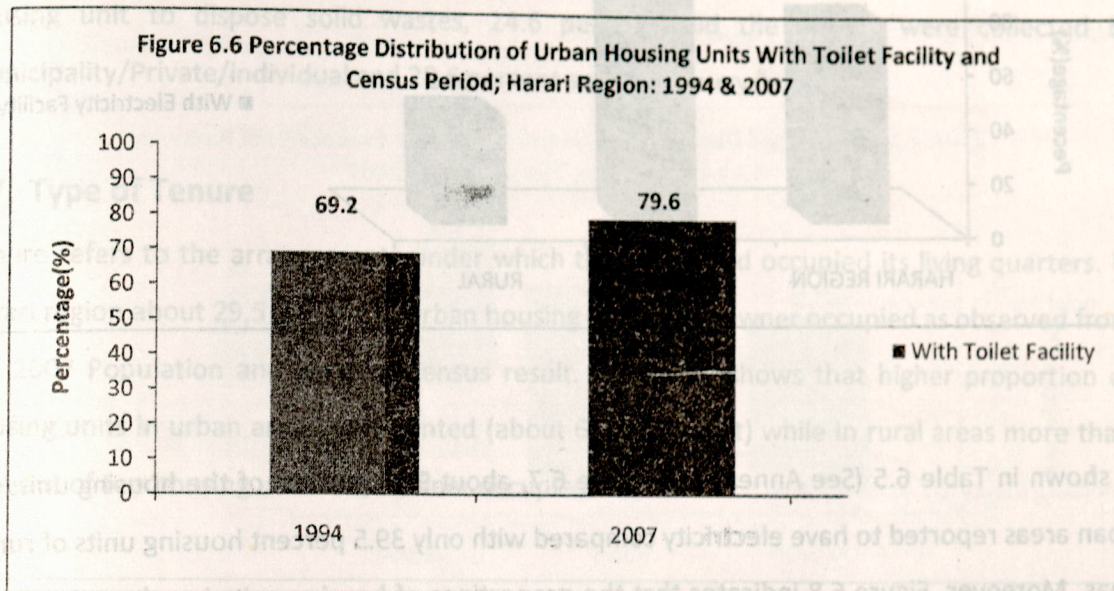


Figure 6.6 shows that the proportion of housing units in urban Areas with toilet facilities has increased from 69.2 percent in 1994 to 79.2 percent in 2007. This indicates a significant increment over the last 12 years.



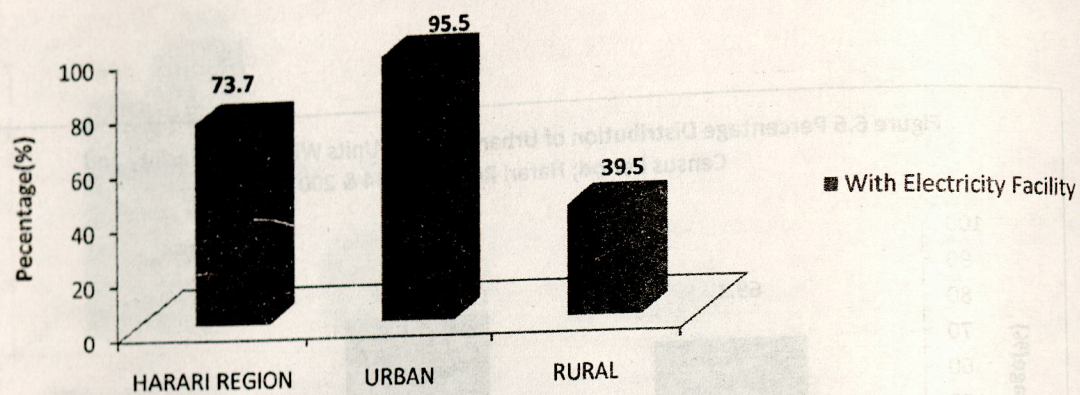
6.4 Status of Occupancy

As depicted in Table 6.4 (See Annex), at country level 97.3 percent of the housing units were occupied by one household only, about 2.6 percent by two households and the rest 0.2 percent of the housing units were occupied by three or more households.

6.5 Type of Lighting

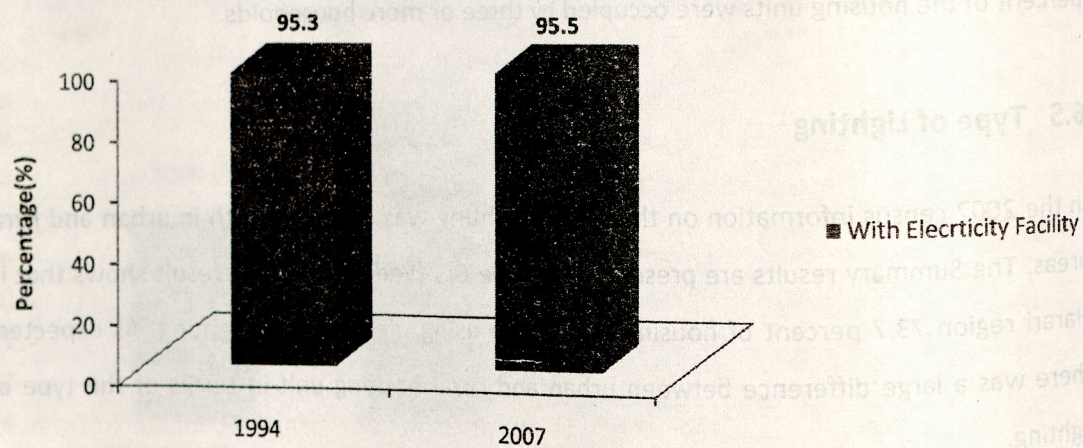
In the 2007 census information on the type of lighting was collected both in urban and rural areas. The Summary results are presented in Table 6.5 (See Annex). The result shows that in Harari region 73.7 percent of housing units were using electricity for lighting. As expected, there was a large difference between urban and rural housing unit in terms of the type of lighting.

Figure 6.7 Percentage Distribution of Housing Units With Electricity Facility and place of Residence; Harari Region: 2007



As shown in Table 6.5 (See Annex) and Figure 6.7, about 95.5 percent of the housing units in urban areas reported to have electricity compared with only 39.5 percent housing units of rural areas. Moreover, Figure 6.8 indicates that the proportions of housing units in urban area with electricity have almost remained constant from 1994 to 2007.

Figure 6.8 Percentage Distribution of Urban Housing Units With Electricity Facility and Census Period; Harari Region: 1994 & 2007



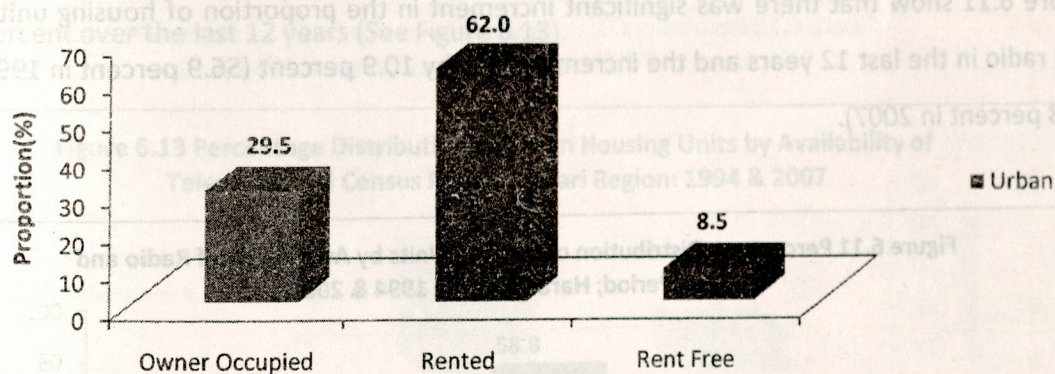
6.6 Type of Waste Disposal

Type of waste disposal is one of the information collected in the 2007 census. The results for urban areas presented in Table 6.6 (See Annex) shows that in Harari region 20 percent of the households residing in the housing units of urban areas were using open space behind the housing unit to dispose solid wastes, 24.6 percent said the wastes were collected by Municipality/Private/individual and 28.6 percent said they bury/burn.

6.7 Type of Tenure

Tenure refers to the arrangements under which the household occupied its living quarters. In Harari region about 29.5 percent of urban housing units were owner occupied as observed from the 2007 Population and Housing Census result. Figure 6.9 shows that higher proportion of housing units in urban areas were rented (about 62.03 percent) while in rural areas more than nine out of ten housing units were owner occupied.

Figure 6.9 Percentage Distribution of urban Housing Units by Types of Tenure; Harari Region: 2007



6.8 Household Durable Goods

Tables 6.8, 6.9 and 6.10 (See Annex) provide information on the proportion of households possessing three household durable goods by urban-rural residence. These indicators are usually considered as a proxy measure of the socio-economic status of households.

6.8.1 Availability of Radio

According to the 2007 census results, in Harari 67.8 percent of the total housing unit had radio. There is urban-rural variation in the proportion of availability of radio. Eighty one percent of the households residing in urban had radio as compared 47 percent of housing units in rural (See Table 6.8 on the (Annex) and Figure 6.10).

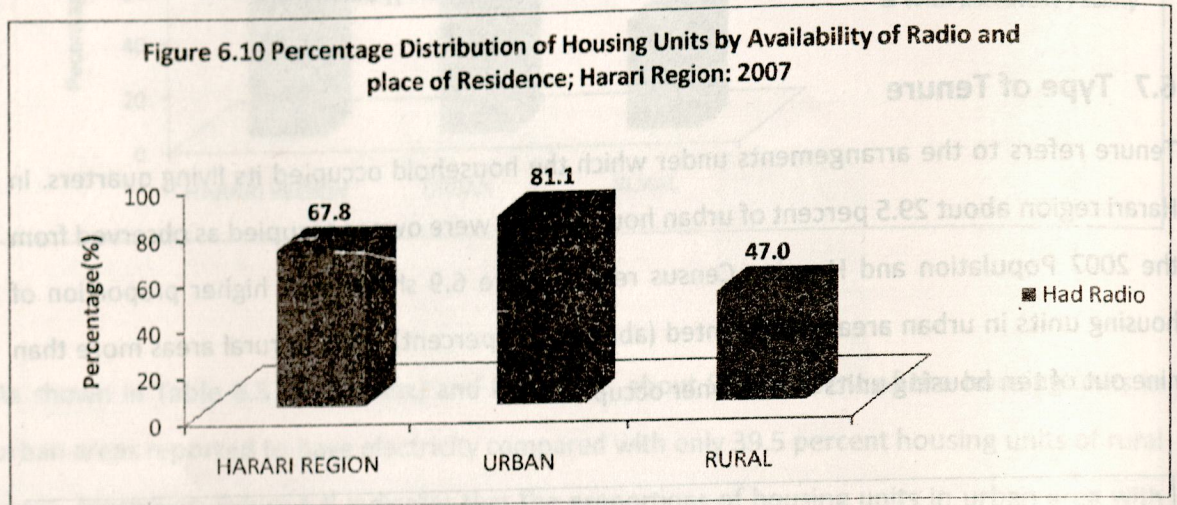
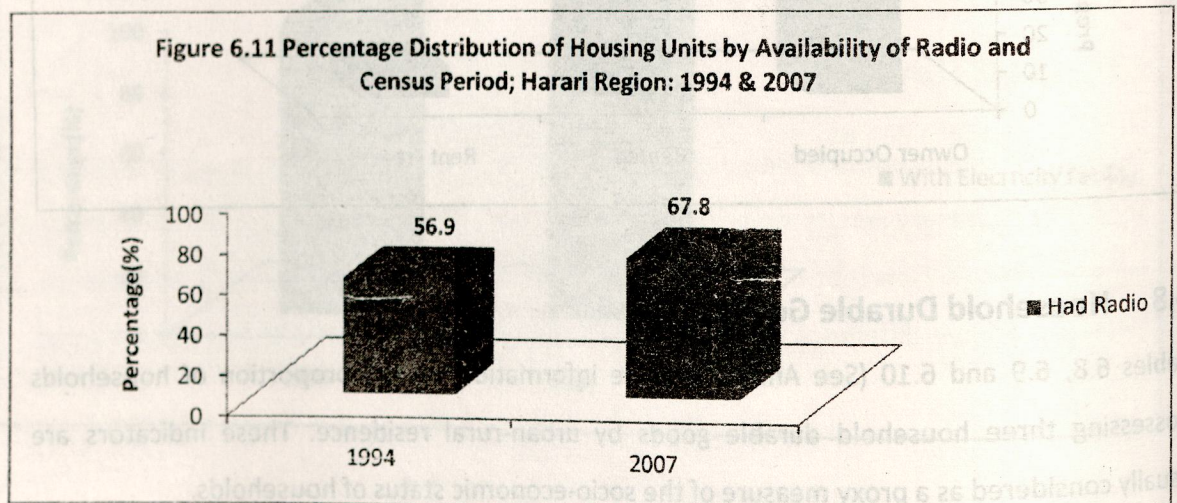


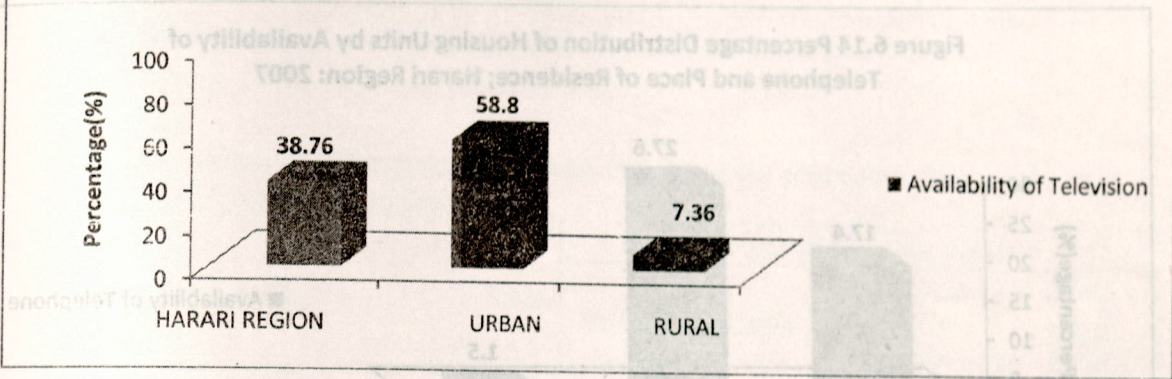
Figure 6.11 show that there was significant increment in the proportion of housing units that had radio in the last 12 years and the increment was by 10.9 percent (56.9 percent in 1994 and 67.8 percent in 2007).



6.8.2 Availability of Television

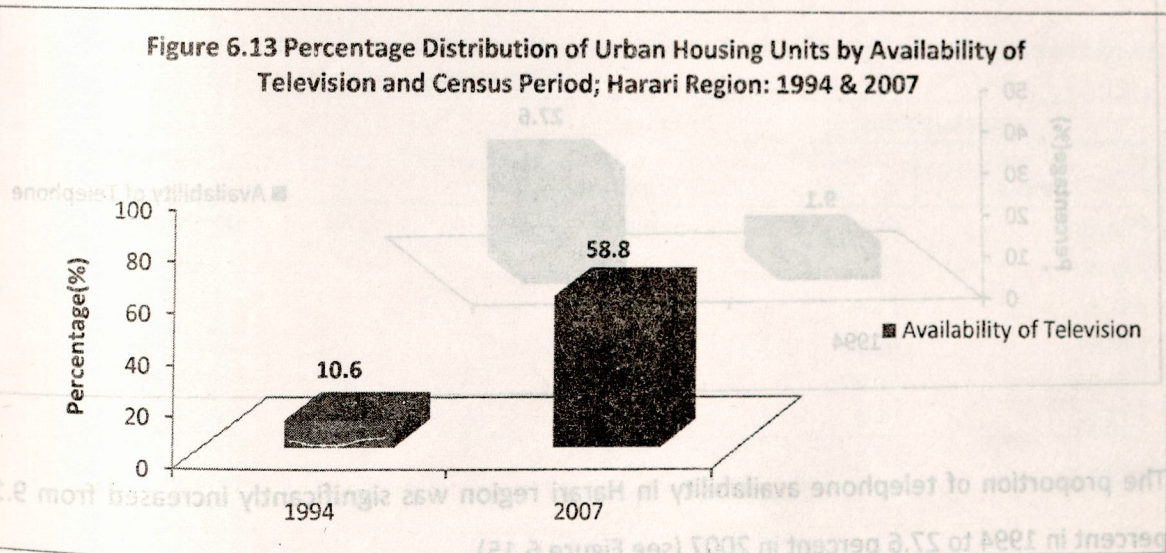
Figure 6.12 indicates that about 38.8 percent of the total housing units in Harari region, 58.8 percent of housing units in urban and 7.4 percent of housing units in rural areas had television.

Figure 6.12 Percentage Distribution of Housing Units by Availability of Television and Place of Residence; Harari Region: 2007



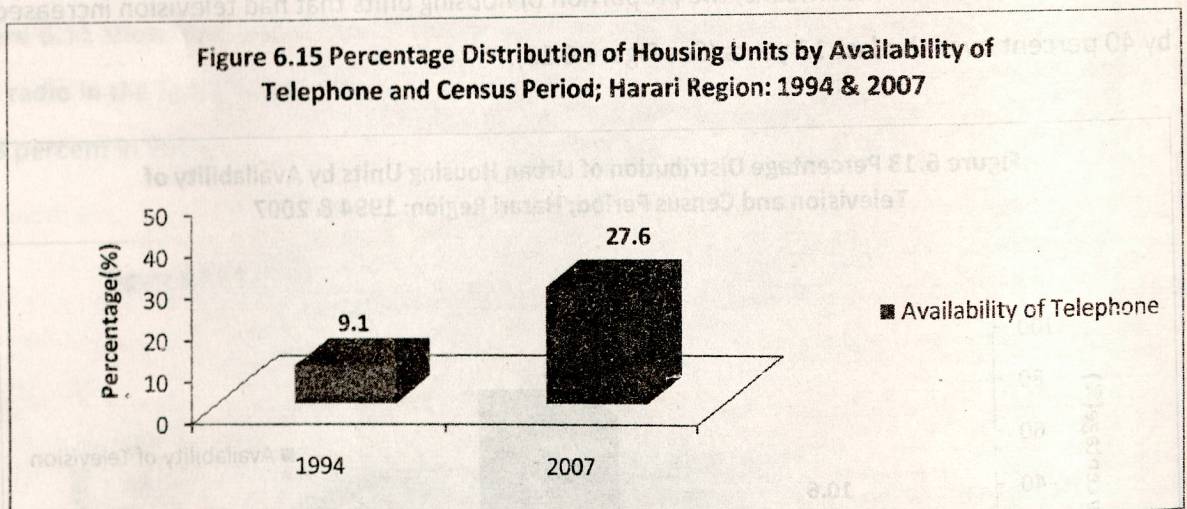
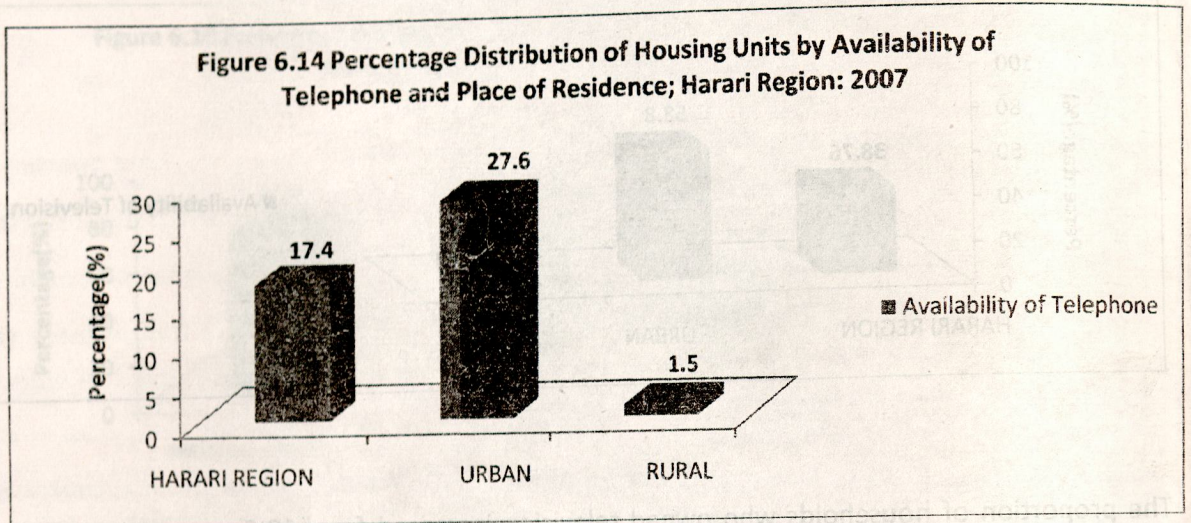
The proportion of households who owned television increased from 10.6 percent in 1994 to 58.8 percent in 2007. That means, the proportion of housing units that had television increased by 40 percent over the last 12 years (See Figure 6.13).

Figure 6.13 Percentage Distribution of Urban Housing Units by Availability of Television and Census Period; Harari Region: 1994 & 2007



6.8.3 Availability of Telephone

As shown in Table 6.10 (See Annex) and Figure 6.14, 17.4 percent of the total housing units in Harari region had telephone. Households living in the housing units of urban area had higher proportion (about 27.6 percent) as compared to households residing in rural area housing units (1.5 percent).



The proportion of telephone availability in Harari region was significantly increased from 9.1 percent in 1994 to 27.6 percent in 2007 (see Figure 6.15).

Table 6.2 Percentage Distribution of Urban Housing Units by Type and Place of Residence; Harari Region: 2007.

Geographical Area	Type of Housing Unit				
	Total	Permanent/Conventional	Improvised	Mobile	Others
COUNTRY TOTAL	100	94.34	3.48	1.96	0.02
URBAN	100	97.04	2.57	0.37	0.02
RURAL	100	93.95	3.69	2.34	0.02
HARARI REGION	100	97.43	1.93	0.57	0.07
URBAN	100	96.17	2.78	0.93	0.11
RURAL	100	99.39	0.61	0	0

Table 6.3 Percentage Distribution of Housing Units by Source of Drinking Water and Place of Residence; Harari Region: 2007.

Geographical Area	Total	Source of Drinking Water		
		Safe Water Supply	Unprotected Well or Spring	River/Lake/Pond
COUNTRY TOTAL			27.93	26.60
URBAN			4.63	3.76
RURAL	100.00	34.52	33.46	32.03
HARARI REGION	100.00	76.93	15.78	7.29
URBAN	100.00	85.51	1.65	1.82
RURAL	100.00	47.83	37.87	14.30

ANNEX

Table 6.4 Percentage Distributions of Housing Units by Availability of Toilet Facility and Place of Residence; Harari Region: 2007

Geographical Area	Total	Availability of Toilet	
		Has Facility	Has No Facility
COUNTRY TOTAL	100.00	33.34	66.66
URBAN	100.00	71.81	28.19
RURAL	100.00	24.21	75.79
HARARI REGION	100.00	51.20	48.80
URBAN	100.00	79.60	20.40
RURAL	100.00	6.79	93.21

6.8.3 Availability of Textbooks

As shown in Table 6.28, the

Harari region had the lowest

proportion (about 27.8 percent)

(1.5 percent).

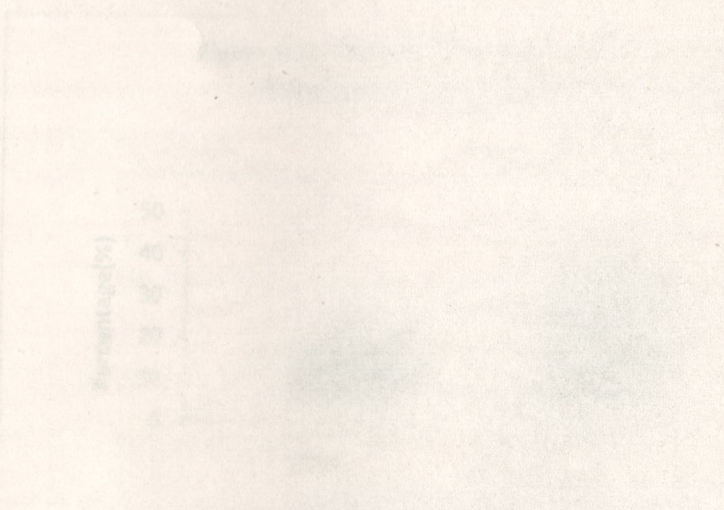
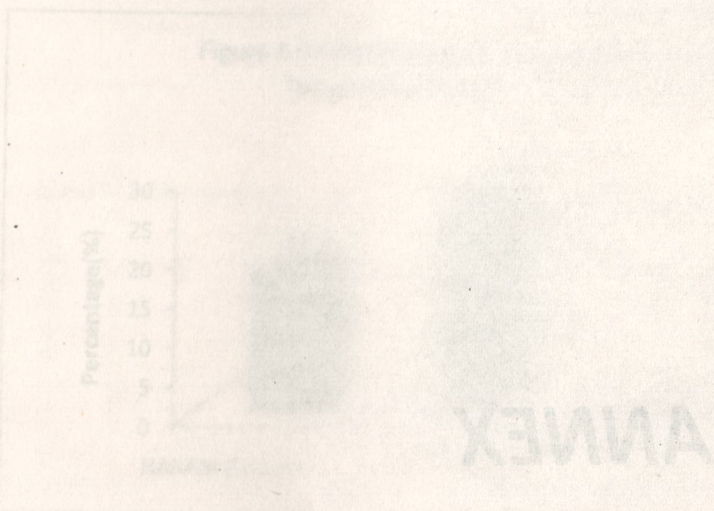


Table 6.28: Availability of Textbooks

Source: Ministry of Education, 2010

Table 6.1 Percentage Distribution of Urban Housing Units by Type and Place of Residence; Harari Region: 2007.

Geographical Area	Type of Housing Unit				
	Total	Permanent/ Conventional	Improvised	Mobile	Others
COUNTRY TOTAL	100	94.54	3.48	1.96	0.02
URBAN	100	97.04	2.57	0.37	0.02
RURAL	100	93.95	3.69	2.34	0.02
HARARI REGION	100	97.43	1.93	0.57	0.07
URBAN	100	96.17	2.78	0.93	0.11
RURAL	100	99.39	0.61	0	0

Table 6.2 Percentage Distribution of Housing Units by Source of Drinking Water and Place of Residence; Harari Region: 2007.

Geographical Area	Total	Source of Drinking Water		
		Safe Water Supply	Unprotected Well or Spring	River/ Lake/ Pond
COUNTRY TOTAL	100.00	45.47	27.93	26.60
URBAN	100.00	91.61	4.63	3.76
RURAL	100.00	34.52	33.46	32.03
HARARI REGION	100.00	76.93	15.78	7.29
URBAN	100.00	95.51	1.68	2.82
RURAL	100.00	47.83	37.87	14.30

Table 6.3 Percentage Distributions of Housing Units by Availability of Toilet Facility and Place of Residence; Harari Region: 2007

Geographical Area	Total	Availability of Toilet	
		Has Facility	Has No Facility
COUNTRY TOTAL	100.00	33.34	66.66
URBAN	100.00	71.82	28.18
RURAL	100.00	24.21	75.79
HARARI REGION	100.00	51.20	48.80
URBAN	100.00	79.60	20.40
RURAL	100.00	6.73	93.27

Table 6.4 Percentage Distribution of Urban Housing Units by Status of Occupancy; Harari Region: 2007.

Geographical Area	All Housing Unit	Status of Occupancy			Total Number of Households	Average Households Per Housing Unit
		One Household	Two Households	Three Households and Above		
COUNTRY TOTAL	100.00	96.76	3.06	0.18	15634226	1.04
URBAN	100.00	96.11	3.54	0.34	3025329	1.04
HARARI URBAN	100.00	97.26	2.56	0.18	28236	1.03

Table 6.5 Percentage Distributions of Housing Units by Type of Lighting and Place of Residence; Harari Region: 2007.

Geographical Area	Total	Type of Lighting					
		Electricity/	Lantern	Bio-Gas	Lamps	Candle/Wax	Firewood
COUNTRY TOTAL	100.00	17.35	9.14	0.43	59.16	0.41	13.52
URBAN	100.00	79.90	6.06	0.09	12.30	0.60	1.05
RURAL	100.00	2.50	9.87	0.51	70.28	0.36	16.48
HARARI REGION	100.00	73.71	15.76	0.18	9.50	0.07	0.78
URBAN	100.00	95.52	0.78	0.00	2.68	0.05	0.95
RURAL	100.00	39.53	39.23	0.46	20.18	0.09	0.51

Table 6.6 Percentage Distribution of Urban Housing Units by Type of Waste Disposal; Harari Region: 2007.

Geographical Area	All Housing Unit	Type of Waste Disposal					
		Collected by Municipality	Collected by Private Establishments/ Individuals	Open Space Behind the Housing Unit	Dump in River	Burly/ Burn	Others
COUNTRY TOTAL -URBAN	100.00	18.73	10.50	36.25	7.72	25.89	0.91
HARARI -URBAN	100.00	24.56	10.65	19.96	14.18	28.55	2.11

Table 6.7 Percentage Distribution of Urban Housing Units by Type of Tenure; Harari Region: 2007.

Geographical Area	Total	Type of Tenure						Occupied Difference Rent
		Owner Occupied	Rent Free	Rented from Kebele	Rented from House Renting Agency	Rented from Other Organization	Rented from Private Household	
COUNTRY TOTAL	100.00	81.46	6.73	2.40	0.16	0.16	9.03	0.06
URBAN	100.00	39.31	6.94	11.92	0.79	0.57	40.36	0.12
HARARI	100.00	29.45	8.52	25.29	2.16	0.71	33.74	0.13

Table 6.8 Percentage Distribution of Housing Units by Availability of Radio and Place of Residence; Harari Region: 2007

Geographical Area	All Housing Unit	Radio			
		Has Radio		Has No Radio	
		No	%	No	%
COUNTRY TOTAL	15103135	5658862	37.47	9444273	62.53
URBAN	2897018	1983763	68.48	913255	31.52
RURAL	12206117	3675099	30.11	8531018	69.89
HARARI REGION	44914	30452	67.80	14462	32.20
URBAN	27414	22235	81.11	5179	18.89
RURAL	17500	8217	46.95	9283	53.05

Table 6.9 Percentage Distribution of Housing Units by Availability of Television and Place of Residence; Harari Region: 2007

Geographical Area	All Housing Unit	Television			
		Has Television		Has No Television	
		No	%	No	%
COUNTRY TOTAL	15103135	855517	5.66	14247618	94.34
URBAN	2897018	797322	27.52	2099696	72.48
RURAL	12206117	58194	0.48	12147922	99.52
HARARI REGION	44914	17408	38.76	27506	61.24
URBAN	27414	16120	58.80	11294	41.20
RURAL	17500	1288	7.36	16212	92.64

Table 6.10 Percentage Distribution of Housing Units by Availability of Telephone and Place of Residence; Harari Region: 2007

Geographical Area	All Housing Unit	Telephone			
		Has Telephone		Has No Telephone	
		No	%	No	%
COUNTRY TOTAL	15103135	619945	4.10	14483190	95.90
URBAN	2897018	582755	20.12	2314263	79.88
RURAL	12206117	37190	0.30	12168927	99.70
HARARI REGION	44914	7831	17.44	37083	82.56
URBAN	27414	7577	27.64	19837	72.36
RURAL	17500	254	1.45	17246	98.55

